

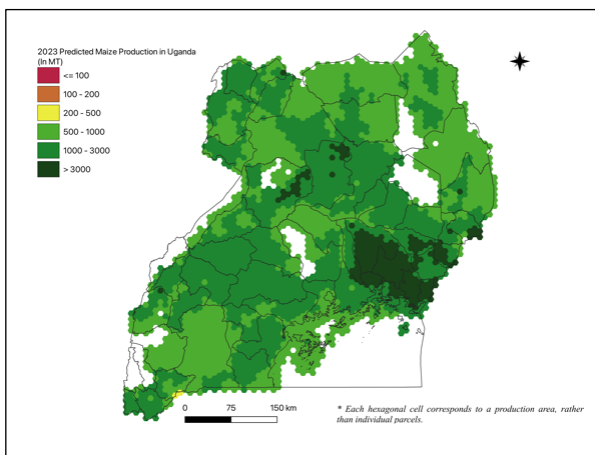
AAGWa Crop Production Forecasts Brief Series Uganda – Maize

Aïssatou Ndoye,* Mansour Dia,** and Khadim Dia***

No. 103, November 2023

The crop production forecast brief series by AKADEMIYA2063's Africa Agriculture Watch (AAGWa) aims to provide more accurate and timely data on harvest and yields for nine major crops across nearly 50 African countries. The timeliness, wide availability, and easy access to this type of data will allow

Figure 1. Uganda 2023 Maize production forecast.



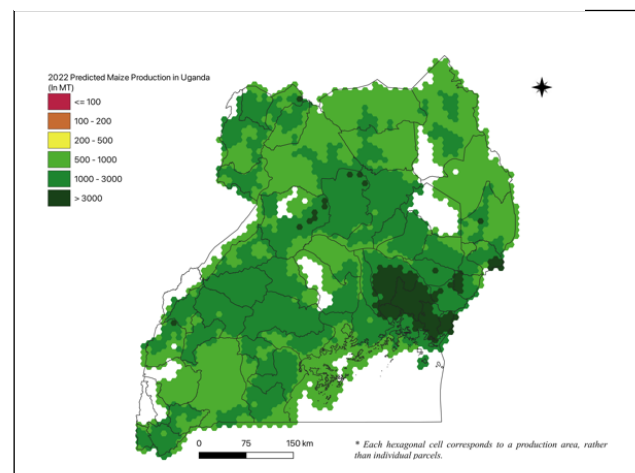
Data source: Africa Agriculture Watch (www.aagwa.org).

In 2023, maize production in Uganda is projected to reach 3,192,047 metric tons (MT), which corresponds to a 8% increase over 2022 production levels. However, the highest maize production levels are expected in districts, such as in Bukooli (Bugiri), Oyam (Apac), Bugabula (Kamuli), Buwekula (Mubende), and Kiboga, with production volumes estimated at 113,421 MT, 71,018 MT, 69,373 MT, 68,296 MT, and 66,551 MT, respectively. On the other hand, production is projected to be lower in Gulu, Entebbe (Wakiso), Usuk (Katakwi), Kampala (Katakwi), and Amuria (Mahajanga), with levels reaching only 929 MT, 1,021 MT, 1,212 MT, 1,245 MT, and 1,578 MT, respectively.

Moreover, districts such as Bukooli, Buwekula, Oyam, and Bukoto are expected to have the most significant increases of maize production volumes in 2023 compared to last year with differences of respectively, 15,029 MT, 10,752 MT, 8,914 MT, and 7,062 MT. These correspond to relative changes of 15%, 19%, 14%, and 16%.

stakeholders across the value chain to better plan and execute policy and business actions more efficiently. The data published in the briefs are generated through the Africa Crop Production (AfCP) model, an Artificial Intelligence (AI-based) model applied to remotely sensed geo-biophysical data to produce estimates at pixel as well as administrative levels as early as the beginning of every growing season. In Brief 103, we provide forecasts on Maize production in Uganda.

Figure 2. Uganda 2022 Maize production forecast.



Data source: Africa Agriculture Watch (www.aagwa.org).

*Associate Scientist, Department of Data Management, Digital Products, and Technology, AKADEMIYA2063


**Associate Scientist, Department of Data Management, Digital Products, and Technology, AKADEMIYA2063

***Senior Associate Scientist, Department of Data Management, Digital Products, and Technology, AKADEMIYA2063

Annex – 2023 Uganda Maize Production Forecast at District level

Regions	Districts	2023 Production (MT)	2022 Production (MT)	Difference (MT)	Change (%)
Adjumani	East Moyo	43274	38933	4341	11%
Apac	Kole	32706	29134	3571	12%
Apac	Kwania	41310	36343	4967	14%
Apac	Maruzi	36376	31918	4458	14%
Apac	Oyam	71018	62104	8914	14%
Arua	Ayivu	6919	6333	586	9%
Arua	Madi-Okollo	23110	22993	118	1%
Arua	Maracha	4376	4773	-398	-8%
Arua	Terego	16165	14652	1513	10%
Arua	Vurra	8138	8124	14	0%
Bugiri	Bukooli	113421	98392	15029	15%
Bushenyi	Buhweju	4129	5104	-975	-19%
Bushenyi	Igara	3977	4983	-1007	-20%
Bushenyi	Ruhinda	3946	5031	-1085	-22%
Bushenyi	Sheema	5067	6378	-1311	-21%
Busia	Samia-Bugwe	40218	35028	5190	15%
Gulu	Aswa	18874	18534	339	2%
Gulu	Gulu	929	909	19	2%
Gulu	Kilak	35782	35976	-194	-1%
Gulu	Nwoya	38946	40519	-1572	-4%
Gulu	Omoro	21606	19795	1810	9%
Hoima	Bugahya	18487	18228	259	1%
Hoima	Buhaguzi	25818	25367	450	2%
Iganga	Bugweri	26750	23617	3133	13%
Iganga	Busiki	43862	37944	5919	16%
Iganga	Kigulu	36935	33296	3639	11%
Iganga	Luuka	33900	30589	3312	11%
Jinja	Butembe	15361	13897	1463	11%
Jinja	Jinja	1810	1504	307	20%
Jinja	Kagoma	19653	17943	1710	10%
Kabale	Ndorwa	6427	6264	163	3%
Kabale	Rubanda	7311	7160	150	2%
Kabale	Rukiga	4986	5002	-16	0%
Kabarole	Bunyangabu	7483	6796	687	10%
Kabarole	Burahya	25175	23009	2167	9%
Kaberamaido	Kaberamaido	13221	12186	1036	8%
Kaberamaido	Kalaki	12666	10746	1920	18%
Kalangala	Bujumba	3845	3448	397	12%
Kampala	Kampala	1245	1482	-237	-16%
Kamuli	Budiope	64276	58554	5722	10%
Kamuli	Bugabula	69373	62628	6746	11%
Kamuli	Bulamogi	38695	34964	3732	11%
Kamuli	Buzaaya	17713	15955	1758	11%
Kamwenge	Kibale	33642	29877	3766	13%
Kamwenge	Kitagwenda	15550	13487	2063	15%
Kapchorwa	Kongasis	35259	29405	5854	20%
Kapchorwa	Kween	14835	13544	1292	10%
Kapchorwa	Tingey	7535	6138	1396	23%
Kasese	Bukonjo	11297	10614	684	6%

Kasese	Busongora	20300	19521	779	4%
Katakwi	Amuria	1578	1342	235	18%
Katakwi	Usuk	1212	1520	-307	-20%
Kayunga	Bbaale	19705	17714	1991	11%
Kayunga	Ntenjeru	21806	19478	2328	12%
Kibale	Bugangaizi	23494	20824	2670	13%
Kibale	Buyaga	25146	22286	2860	13%
Kibale	Buyanja	18348	16122	2226	14%
Kiboga	Kiboga	66551	59663	6887	12%
Kisoro	Kisoro	12181	10987	1194	11%
Kitgum	Chua	37423	39083	-1661	-4%
Kitgum	Lamwo	39571	44859	-5288	-12%
Kotido	Dodoth	55150	62563	-7413	-12%
Kotido	Jie	33678	32841	837	3%
Kumi	Bukedea	17120	14916	2204	15%
Kumi	Kumi	15644	13461	2183	16%
Kumi	Ngora	10863	9418	1445	15%
Kyenjojo	Kyaka	27405	24433	2972	12%
Kyenjojo	Mwenge	35085	31449	3636	12%
Lake Albert	Lake Albert	5754	6961	-1207	-17%
Lake Victoria	Lake Victoria	65171	62773	2398	4%
Lira	Dokolo	16602	14513	2089	14%
Lira	Erute	27833	23929	3904	16%
Lira	Kyoga	22173	21283	891	4%
Lira	Moroto	39520	33649	5871	17%
Lira	Otuke	21347	19066	2281	12%
Luwero	Bamunanika	17134	15245	1889	12%
Luwero	Katikamu	15211	13972	1239	9%
Luwero	Nakaseke	2611	2686	-75	-3%
Masaka	Bukomansimbi	10131	8659	1472	17%
Masaka	Bukoto	51128	44067	7062	16%
Masaka	Kalungu	13669	11845	1824	15%
Masindi	Bujenje	19038	16698	2340	14%
Masindi	Bujenje (?)	20225	18110	2115	12%
Masindi	Buruli	34221	31223	2997	10%
Masindi	Kibanda	64155	59017	5138	9%
Mayuge	Bunya	50258	44683	5574	12%
Mbale	Bubulo	15061	12519	2542	20%
Mbale	Bungokho	25812	22353	3459	15%
Mbale	Manjiya	2816	2342	474	20%
Mbarara	Bukanga	19248	19430	-181	-1%
Mbarara	Ibanda	6538	7698	-1159	-15%
Mbarara	Isingiro	10393	11319	-926	-8%
Mbarara	Kashari	7129	8727	-1598	-18%
Mbarara	Kazo	15279	16763	-1484	-9%
Mbarara	Nyabushozi	22066	26406	-4340	-16%
Mbarara	Rwampara	5553	7055	-1501	-21%
Moroto	Bokora	26323	33933	-7610	-22%
Moroto	Matheniko	17485	22386	-4901	-22%
Moyo	Obongi	11498	10949	549	5%
Moyo	West Moyo	14271	13211	1061	8%
Mpigi	Butambala	6560	5806	754	13%



Mpigi	Gomba	21045	20013	1032	5%
Mpigi	Mawokota	14037	13169	868	7%
Mubende	Busujju	8470	7120	1350	19%
Mubende	Buwekula	68296	57544	10752	19%
Mubende	Kassanda	38204	32627	5577	17%
Mubende	Mityana	18879	15894	2984	19%
Mukono	Buikwe	20499	17240	3260	19%
Mukono	Buvuma Islands	3748	3332	416	12%
Mukono	Mukono	16690	14737	1953	13%
Mukono	Nakifuma	18144	15824	2320	15%
Nakapiripirit	Chekwi	35953	36544	-591	-2%
Nakapiripirit	Pian	18046	16979	1066	6%
Nakapiripirit	Pokot	13527	15579	-2052	-13%
Nakasongola	Buruli	35282	37086	-1804	-5%
Nebbi	Jonam	11282	11119	163	1%
Nebbi	Okoro	11333	11397	-63	-1%
Nebbi	Padyere	16601	14823	1778	12%
Ntungamo	Kajara	8184	7146	1038	15%
Ntungamo	Ruhaama	10855	10132	723	7%
Ntungamo	Rushenyi	11810	11372	438	4%
Pader	Agago	35178	37346	-2168	-6%
Pader	Aruu	40678	39282	1396	4%
Pallisa	Budaka	15573	13188	2385	18%
Pallisa	Butebo	10996	9583	1413	15%
Pallisa	Kibuku	14513	12501	2012	16%
Pallisa	Pallisa	16449	14046	2403	17%
Rakai	Kabula	10518	10950	-432	-4%
Rakai	Kakuuto	14706	14731	-25	0%
Rakai	Kooki	20481	18472	2009	11%
Rakai	Kyotera	12128	10926	1202	11%
Sembabule	Lwemiyaga	11755	10687	1068	10%
Sembabule	Mawogola	23599	21759	1840	8%
Sironko	Budadiri	12929	10358	2571	25%
Sironko	Bulambuli	8196	7635	561	7%
Soroti	Kasilo	14457	13175	1282	10%
Soroti	Serere	14432	12211	2222	18%
Soroti	Soroti	23143	19313	3830	20%
Tororo	Bunyole	30492	26607	3885	15%
Tororo	Kisoko (West Budama)	20013	16011	4002	25%
Tororo	Tororo	9345	7315	2030	28%
Tororo	Tororo (Municipality)	2499	1914	585	31%
Wakiso	Busiuro	15686	14832	854	6%
Wakiso	Entebbe	1021	892	129	14%
Wakiso	Jinja	7358	6945	414	6%
Yumbe	Aringa	37152	31632	5520	17%
Total		3192047	2963335	228712	8%

MT (Metric tons): 1 MT is equivalent to 1,000 kilograms.

Change: refers to the relative difference and is calculated as (2023 prod – 2022 prod) divided by 2022 prod.



Suggested Citation: Ndoye, A., M. Dia, and K. Dia. 2023. *AAGWa Crop Production Forecasts Brief Series: Uganda – Maize*. AAGWa Crop Production Forecasts Brief Series, No. 103. Kigali: AKADEMIYA2063.
<https://doi.org/10.54067/acpf.103>