

# AAGWa Crop Production Forecasts Brief Series Congo – Cassava

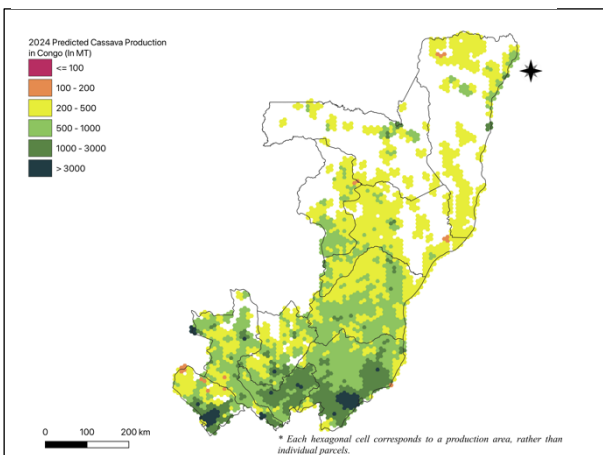
Aïssatou Ndoye\*, Mansour Dia\*\*, and Khadim Dia\*\*\*

No. 108, February 2024

The crop production forecast brief series by AKADEMIYA2063's Africa Agriculture Watch (AAGWa) aims to provide more accurate and timely data on harvest and yields for nine major crops across nearly 50 African countries. The timeliness, wide availability, and easy access to this type of data will allow stakeholders across the value chain to better plan and execute policy and business actions more efficiently. The data published in the briefs are generated through the Africa Crop Production

(AfCP) model, an Artificial Intelligence (AI-based) model applied to remotely sensed geo-biophysical data to produce estimates at pixel as well as administrative levels as early as the beginning of every growing season. In Brief 108, we provide forecasts on cassava production in Congo.

Figure 1. Congo 2024 Cassava production forecast.



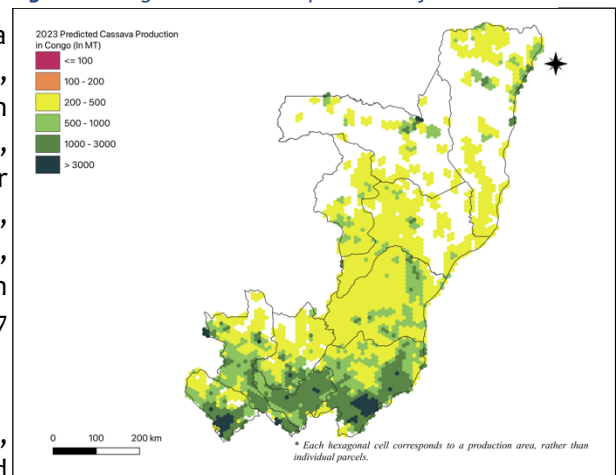
Data source: Africa Agriculture Watch ([www.aagwa.org](http://www.aagwa.org)).

Ngamaba (Pool), Djambala (Plateaux), Mouyondzi (Bouenza), Kinkala (Pool), and Loandjili (Kouilou) with production levels estimated at 132,515 MT, 105,910 MT, 102,773 MT, 90,190 MT, and 86,121 MT, respectively. In contrast, lower production values are observed in Sembé (Sangha), Souanké (Sangha), Loukoléla (Cuvette), Brazzaville, Mayoko (Niari), and Impfondo (Likouala), with production values reaching only 1,276 MT, 1,808 MT, 2,397 MT, 2,447 MT, 2,969 MT, and 3,641 MT, respectively.

However, the southern districts such as Djambala, Mayama (Pool), Kindamba (Pool), Lékana (Plateaux), and Ngamaba are expected to experience the most significant increases of cassava production volumes in

2024 with differences of respectively, 20,850 MT, 13,851 MT, 10,237 MT, 9,237 MT, and 7,916 MT. These correspond to changes of, respectively, 20%, 22%, 16%, 42% and 6%.

Figure 2. Congo 2023 Cassava production forecast.



Data source: Africa Agriculture Watch ([www.aagwa.org](http://www.aagwa.org)).

\*Associate Scientist, Department of Data Management, Digital Products, and Technology, AKADEMIYA2063

\*\*Associate Scientist, Department of Data Management, Digital Products, and Technology, AKADEMIYA2063

\*\*\*Senior Associate Scientist, Department of Data Management, Digital Products, and Technology, AKADEMIYA2063

## Annex – 2024 Congo Cassava Production Forecast at District level.

Provinces	Districts	2024 Production (MT)	2023 Production (MT)	Difference (MT)	Change (%)
Bouenza	Boko-Songho	17300	18939	-1639	-9%
Bouenza	Loudima	29859	36959	-7100	-24%
Bouenza	Madingou	14696	15260	-565	-4%
Bouenza	Mfouati	7905	7679	226	3%
Bouenza	Mouyondzi	102773	100384	2389	2%
Bouenza	Nkayi District	34456	34729	-274	-1%
Brazzaville	Brazzaville	2447	2357	90	4%
Cuvette	Boundji	11161	12148	-987	-9%
Cuvette	Loukoléla	2397	3972	-1576	-66%
Cuvette	Makoua	11407	13924	-2517	-22%
Cuvette	Mossaka	6902	10683	-3780	-55%
Cuvette	Okoyo	21042	17413	3629	17%
Cuvette	Owando	16853	19554	-2701	-16%
Cuvette-Ouest	Ewo	27832	23602	4231	15%
Cuvette-Ouest	Kéllé	8426	9141	-716	-8%
Cuvette-Ouest	Mbomo	12400	13407	-1007	-8%
Kouilou	Kakamoeka	11416	14053	-2637	-23%
Kouilou	Loandjili	86121	84474	1647	2%
Kouilou	Madingo-Kayes	15643	22250	-6607	-42%
Kouilou	Mvouti	27538	30267	-2729	-10%
Lékoumou	Bambama	3878	3721	157	4%
Lékoumou	Komono	12712	11278	1434	11%
Lékoumou	Sibiti	58988	59893	-905	-2%
Lékoumou	Zanaga	16964	11828	5136	30%
Likouala	Dongou	26167	36002	-9835	-38%
Likouala	Epéna	10821	15229	-4408	-41%
Likouala	Impfondo	3641	5224	-1583	-43%
Niari	Divénié	22429	20933	1496	7%
Niari	Kibangou	23564	32753	-9189	-39%
Niari	Kimongo	19626	20952	-1326	-7%
Niari	Louvakou (Loubomo)	29354	38048	-8693	-30%
Niari	Mayoko	2969	1888	1081	36%
Niari	Mossendjo	32362	32373	-11	0%
Plateaux	Abala	31371	32901	-1530	-5%
Plateaux	Djambala	105910	85060	20850	20%
Plateaux	Gamboma	51596	50944	652	1%
Plateaux	Lékana	21803	12566	9237	42%
Pool	Boko	39631	39486	145	0%
Pool	Kindamba	62366	52129	10237	16%
Pool	Kinkala	90190	85177	5013	6%
Pool	Mayama	62131	48280	13851	22%
Pool	Mindouli	46664	45629	1035	2%
Pool	Ngabé	66784	63631	3153	5%
Pool	Ngamaba	132515	124599	7916	6%
Sangha	Ouessou	20255	24837	-4583	-23%
Sangha	Sembé	1276	1845	-569	-45%
Sangha	Souanké	1808	3353	-1545	-85%
<b>Total</b>		<b>1466351</b>	<b>1451755</b>	<b>14596</b>	<b>1%</b>



**MT (Metric tons):** 1 MT is equivalent to 1,000 kilograms.

**Change:** refers to the relative difference and is calculated as  $(2024 \text{ prod} - 2023 \text{ prod})$  divided by  $2023 \text{ prod}$ .

**Suggested Citation:** Ndoye, A., M. Dia, and K. Dia. 2024. AAgWa Crop Production Forecasts Brief Series: Congo – Cassava. AAgWa Crop Production Forecasts Brief Series, No. 108. Kigali: AKADEMIYA2063.

<https://doi.org/10.54067/acpf.108>