

AAGWa Crop Production Forecasts Brief Series

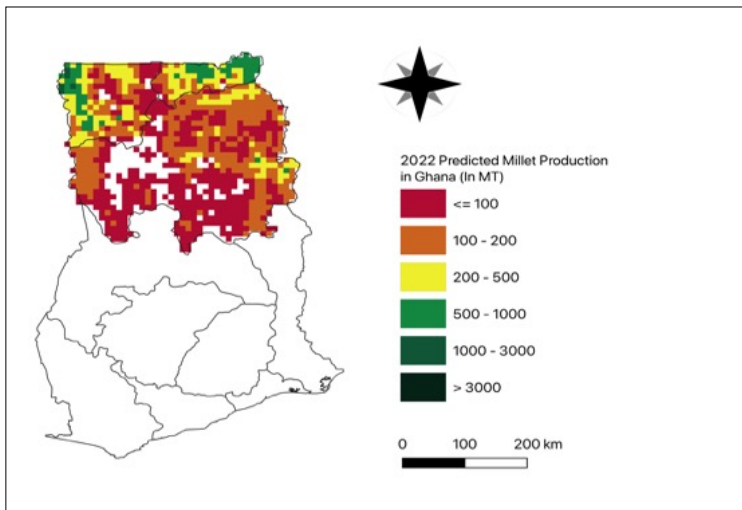
Ghana – Millet

Aissatou Ndoye*, Khadim Dia**, and Racine Ly***

No. 10, February 2023

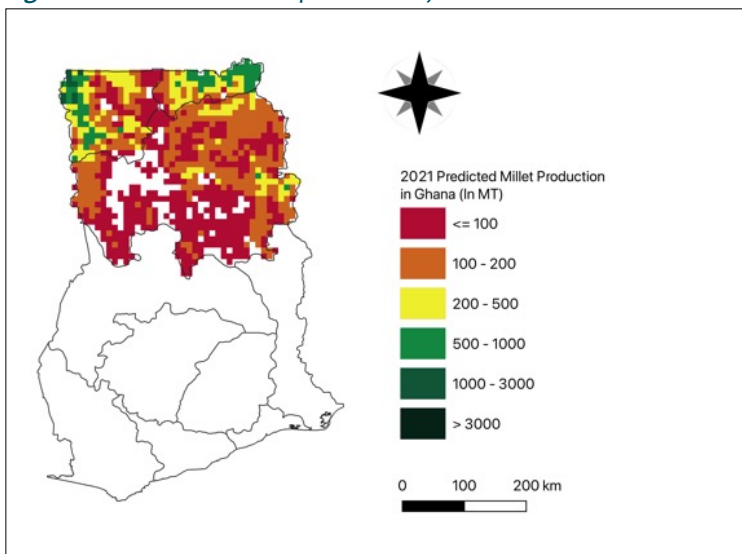
The crop production forecast brief series by AKADEMIYA2063's Africa Agriculture Watch (AAGWa) aims to provide more accurate and timely data on harvest and yields for nine major crops across nearly 50 African countries. The timeliness, wide availability, and easy access to this type of data will allow stakeholders across the value chain to better plan and execute policy and business actions more efficiently. The data published in the briefs are generated through the Africa Crop Production (AfCP) model, an Artificial Intelligence (AI-based) model applied to remotely sensed geo-biophysical data to produce estimates at pixel as well as administrative levels as early as the beginning of every growing season. In Brief 10, we provide forecasts on Millet production in Ghana.

Figure 1. Ghana 2022 millet production forecast.



Data Source: Africa Agriculture Watch (www.aagwa.org).

Figure 2. Ghana 2021 millet production forecast.



Data Source: Africa Agriculture Watch (www.aagwa.org).

In 2022, millet production in Ghana was projected to decline by 4,828 MT compared to 2021 production levels, with an annual production of 174,248 metric tons. Nevertheless, the Upper West and North regions are expected to produce the most significant volumes of millet, particularly in Lawra, Nadowli, Jirapa Lambussie, and Yendi, with production values evaluated at 10,821 MT, 9,762 MT, 9,646 MT, and 8,212 MT, respectively. In contrast, lower production values are observed in Pru (Brong Ahafo), Tamale (Northern), Namumba South (Northern), Bolgatanga (Upper East), and East Mamprusi (Northern) with 51 MT, 307 MT, 1,692 MT, 2,511 MT, and 2,685 MT, respectively.

The most significant millet production decreases in 2022 compared to 2021 are expected to occur in the upper Western part of the country, particularly in Lawra, Jirapa Lambussie, Nadowli, and Wa with -1,318 MT, -820 MT, -587 MT, and -502 MT, respectively. On the contrary, the northern regions such as Bunkpurugu Yunyoo, Saboba Chereponi, Sawa-Tuna-Kalba, Gushiegu, and East Mamprusi are expected to have the most significant increases in millet production in 2022 compared to 2021, with differences of 206, 196, 189, 124 and 112 metric tons respectively.

The most significant millet production decreases in 2022 compared to 2021 are expected to occur in the upper Western part of the country, particularly in Lawra, Jirapa Lambussie, Nadowli, and Wa with -1,318 MT, -820 MT, -587 MT, and -502 MT, respectively. On the contrary, the northern regions such as Bunkpurugu Yunyoo, Saboba Chereponi, Sawa-Tuna-Kalba, Gushiegu, and East Mamprusi are expected to have the most significant increases in millet production in 2022 compared to 2021, with differences of 206, 196, 189, 124 and 112 metric tons respectively.

The most significant millet production decreases in 2022 compared to 2021 are expected to occur in the upper Western part of the country, particularly in Lawra, Jirapa Lambussie, Nadowli, and Wa with -1,318 MT, -820 MT, -587 MT, and -502 MT, respectively. On the contrary, the northern regions such as Bunkpurugu Yunyoo, Saboba Chereponi, Sawa-Tuna-Kalba, Gushiegu, and East Mamprusi are expected to have the most significant increases in millet production in 2022 compared to 2021, with differences of 206, 196, 189, 124 and 112 metric tons respectively.

*Associate Scientist, Department of Data Management, Digital Products, and Technology, AKADEMIYA2063

** Senior Associate Scientist, Department of Data Management, Digital Products, and Technology, AKADEMIYA2063

***Director, Department of Data Management, Digital Products, and Technology, AKADEMIYA2063



Annex – 2022 Ghana Millet Production Forecast at District level

Regions	Districts	2022 Prod (MT)	2021 Prod (MT)	Absolute Difference(MT)	Relative Difference (%)
Brong Ahafo	Pru	51	53	-2	-5%
Northern	Bole	4174	4206	-32	-1%
Northern	Bunkpurugu Yunyoo	3464	3257	206	6%
Northern	Central Gonja	4884	5047	-163	-3%
Northern	East Gonja	6845	6797	48	1%
Northern	East Mamprusi	2685	2572	112	4%
Northern	Gushiegu	4733	4609	124	3%
Northern	Karaga	3989	3913	76	2%
Northern	Nanumba North	2863	2874	-11	0%
Northern	Nanumba South	1692	1676	16	1%
Northern	Saboba Chereponi	4014	3819	196	5%
Northern	Savelugu Nanton	2976	2962	14	0%
Northern	Sawa-Tuna-Kalba	6182	5993	189	3%
Northern	Tamale	307	316	-9	-3%
Northern	Tolon-Kumbungu	4112	4089	23	1%
Northern	West Gonja	4243	4346	-104	-2%
Northern	West Mamprusi	6844	6753	92	1%
Northern	Yendi	8212	8177	35	0%
Northern	Zabzugu Tatale	5143	5141	2	0%
Upper East	Bawku Municipal	6110	6487	-378	-6%
Upper East	Bawku West	4413	4540	-126	-3%
Upper East	Bolgatanga	2511	2670	-159	-6%
Upper East	Bongo	3136	3390	-254	-8%
Upper East	Builsa	4949	4962	-13	0%
Upper East	Garu Tempene	7082	7565	-482	-7%
Upper East	Kassena Nankana	7204	7518	-314	-4%
Upper East	Talensi Nabdam	2930	2992	-62	-2%
Upper West	Jirapa Lambussie	9646	10466	-820	-8%
Upper West	Lawra	10821	12138	-1318	-12%
Upper West	Nadowli	9762	10349	-587	-6%
Upper West	Sissala East	6107	6260	-153	-3%
Upper West	Sissala West	5650	5835	-185	-3%
Upper West	Wa	7496	7999	-503	-7%
Upper West	Wa East	4463	4528	-65	-1%
Upper West	Wa West	4554	4776	-221	-5%
Total		174248	179076	-4828	-3%

Notes: MT (Metric ton): 1 MT is equivalent to 1,000 kilograms
 Absolute Difference: 2022 Prod – 2021 Prod
 Relative Difference: (2022 – 2021) / 2021

Suggested Citation: Ndoye, A., K. Dia, and R. Ly. 2023. AAgWa Crop Production Forecasts Brief Series: Ghana – Millet. AAgWa Crop Production Forecasts Brief Series, No.10. Kigali, Rwanda: AKADEMIYA2063. <https://doi.org/10.54067/acpf.10>