

# AAGWa Crop Production Forecasts Brief Series Angola – Maize

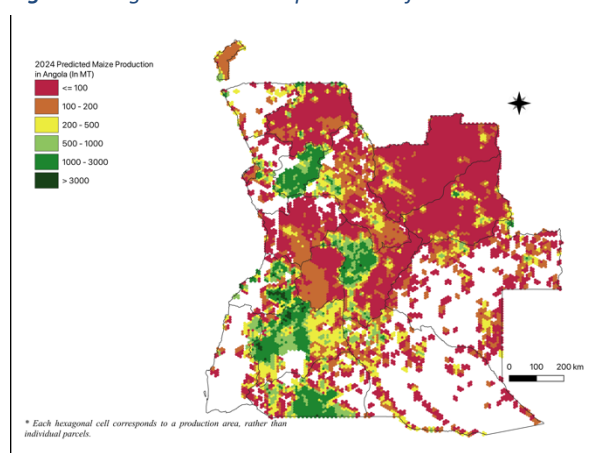
Aïssatou Ndoye\*, Mansour Dia\*\*, and Khadim Dia\*\*\*

No. 111, February 2024

The crop production forecast brief series by AKADEMIYA2063's Africa Agriculture Watch (AAGWa) aims to provide more accurate and timely data on harvest and yields for nine major crops across nearly 50 African countries. The timeliness, wide availability, and easy access to this type of data will allow

stakeholders across the value chain to better plan and execute policy and business actions more efficiently. The data published in the briefs are generated through the Africa Crop Production (AfCP) model, an Artificial Intelligence (AI-based) model applied to remotely sensed geo-biophysical data to produce estimates at pixel as well as administrative levels as early as the beginning of every growing season. In Brief 111, we provide forecasts on maize production in Angola.

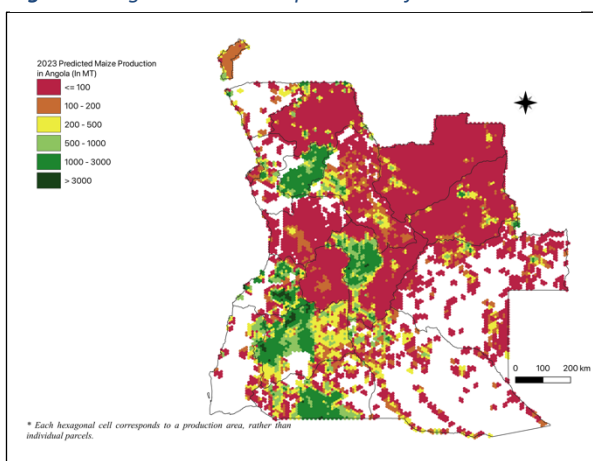
Figure 1. Angola 2024 Maize production forecast.



Data source: Africa Agriculture Watch ([www.aagwa.org](http://www.aagwa.org)).

In 2024, maize production in Angola is projected to reach 2,715,946 metric tons (MT), which corresponds to a 3% increase over 2023 production levels. The highest maize producers are expected to be the South-Western municipalities such as Cuanhama (Cunene), Ombadja (Cunene), Caluquembe (Huila), Chibia (Huila), and Cubal (Benguela) with production levels estimated at 142,803 MT, 137,520 MT, 90,280 MT, 84,245 MT, and 74,139 MT respectively. In comparison, lower production values are observed in areas such as Dembos (Cuanza Norte), Noqui (Zaire), Samba (Luanda), Ambriz (Bengo), Cacucaco (Luanda), and Quilenda (Cuanza Sul) with production of, respectively, 156 MT, 160 MT, 225 MT, 598 MT, 628 MT, and 717 MT.

Figure 2. Angola 2023 Maize production forecast.



Data source: Africa Agriculture Watch ([www.aagwa.org](http://www.aagwa.org)).

Moreover, the most significant maize production increases in 2024 are expected to occur in the Northern areas such as in Muconda (Lunda Sul), Saurimo (Lunda Sul), Lucapa (Lunda Norte), Xá Muteba (Lunda Norte), and Lubalo (Lunda Norte), with differences of respectively, 12,079 MT, 9,448 MT, 8,706 MT, 7,484 MT, and 7,070 MT, respectively. These correspond to changes of, respectively, 43%, 42%, 104%, 47%, and 113%.

\*Associate Scientist, Department of Data Management, Digital Products, and Technology, AKADEMIYA2063

\*\*Associate Scientist, Department of Data Management, Digital Products, and Technology, AKADEMIYA2063

\*\*\*Senior Associate Scientist, Department of Data Management, Digital Products, and Technology, AKADEMIYA2063

## Annex – 2024 Angola Maize Production Forecast at District level

Provinces	Municipalities	2024 Production (MT)	2023 Production (MT)	Difference (MT)	Change (%)
Bengo	Ambriz	598	446	152	34%
Bengo	Dande	9325	9546	-221	-2%
Bengo	Icolo e Bengo	15101	15829	-728	-5%
Bengo	Muxima	3218	2606	612	23%
Bengo	Nambuagongo	983	519	465	90%
Benguela	Baía Farta	7295	8148	-853	-10%
Benguela	Balombo	12830	12878	-48	0%
Benguela	Benguela	5557	6136	-579	-9%
Benguela	Bocoio	49386	51912	-2526	-5%
Benguela	Caiambambo	39179	42062	-2883	-7%
Benguela	Chongoroi	3565	3263	302	9%
Benguela	Cubal	74139	78326	-4187	-5%
Benguela	Ganda	43209	44793	-1585	-4%
Benguela	Lobito	3221	3468	-246	-7%
Bié	Andulo	59840	61230	-1390	-2%
Bié	Camacupa	39377	37501	1876	5%
Bié	Catabola	64424	68443	-4019	-6%
Bié	Chinguar	51710	54742	-3031	-6%
Bié	Chitembo	52953	46883	6070	13%
Bié	Cuemba	17507	11070	6437	58%
Bié	Cunhinga	28755	30625	-1871	-6%
Bié	Kuito	42033	44180	-2147	-5%
Bié	Nharea	45935	47692	-1757	-4%
Cabinda	Belize	2314	1955	359	18%
Cabinda	Buco Zau	3149	2459	690	28%
Cabinda	Cabinda	5994	5510	483	9%
Cabinda	Landana	2551	2168	383	18%
Cuando Cubango	Calai	2446	2071	376	18%
Cuando Cubango	Cuangar	6733	6114	619	10%
Cuando Cubango	Cuchi	17131	16666	465	3%
Cuando Cubango	Cuito Cuanavale	13523	12194	1329	11%
Cuando Cubango	Dirico	1931	1734	197	11%
Cuando Cubango	Mavinga	3404	2953	451	15%
Cuando Cubango	Menongue	41939	40738	1201	3%
Cuando Cubango	Nancova	861	712	149	21%
Cuando Cubango	Rivungo	1875	1452	422	29%
Cuanza Norte	Ambaca	47427	50108	-2681	-5%
Cuanza Norte	Banga	7766	8112	-346	-4%
Cuanza Norte	Bolongongo	16134	16901	-767	-5%
Cuanza Norte	Cambambe	46470	49721	-3251	-7%
Cuanza Norte	Cazengo	31238	33416	-2178	-7%
Cuanza Norte	Dembos	156	84	72	86%
Cuanza Norte	Golungo Alto	23915	25612	-1697	-7%
Cuanza Norte	Lucala	22896	24084	-1188	-5%
Cuanza Norte	Ngonguembo	18972	20038	-1066	-5%
Cuanza Norte	Pango Aluquém	1289	1395	-106	-8%
Cuanza Norte	Quiculungo	1926	1984	-57	-3%
Cuanza Norte	Samba Cajú	39940	42138	-2198	-5%
Cuanza Sul	Amboim	1642	1434	208	15%

Cuanza Sul	Cassongue	6245	4410	1835	42%
Cuanza Sul	Conda	1309	910	399	44%
Cuanza Sul	Ebo	4411	3688	723	20%
Cuanza Sul	Libolo	4977	4321	655	15%
Cuanza Sul	Mussende	4169	2710	1460	54%
Cuanza Sul	Porto Amboim	831	531	300	57%
Cuanza Sul	Quibala	7395	4507	2888	64%
Cuanza Sul	Quilenda	717	523	194	37%
Cuanza Sul	Seles	3585	2545	1040	41%
Cuanza Sul	Sumbe	2183	1509	674	45%
Cuanza Sul	Waku Kungo	5355	3687	1668	45%
Cunene	Cahama	26743	27458	-716	-3%
Cunene	Cuanhama	142803	152206	-9404	-6%
Cunene	Curoca	7415	6608	807	12%
Cunene	Cuvelai	25204	24817	387	2%
Cunene	Namakunde	63367	67573	-4207	-6%
Cunene	Ombadja	137520	147388	-9868	-7%
Huambo	Bailundo	9398	6166	3232	52%
Huambo	Caála	6740	4542	2198	48%
Huambo	Catchiungo	4426	3144	1282	41%
Huambo	Ekunha	2346	1575	770	49%
Huambo	Huambo	4787	3438	1349	39%
Huambo	Londuimbale	3604	2417	1186	49%
Huambo	Longonjo	2961	1784	1177	66%
Huambo	Mungo	5934	4691	1243	27%
Huambo	Tchicala-Tcholoanga	4823	2733	2089	76%
Huambo	Tchindjenje	1319	813	506	62%
Huambo	Ukuma	1589	941	647	69%
Huíla	Caconda	71365	75032	-3667	-5%
Huíla	Caluquembe	90280	95913	-5632	-6%
Huíla	Chibia	84245	91673	-7428	-8%
Huíla	Chicomba	53958	57036	-3078	-5%
Huíla	Chipindo	19873	19717	156	1%
Huíla	Gambos	22614	23135	-522	-2%
Huíla	Humpata	9958	10683	-725	-7%
Huíla	Jamba	34582	33744	838	2%
Huíla	Kuvango	25272	23920	1352	6%
Huíla	Lubango	68763	74821	-6058	-8%
Huíla	Matala	53672	57313	-3641	-6%
Huíla	Quilengues	27055	28784	-1729	-6%
Huíla	Tchipungo	42712	46062	-3350	-7%
Luanda	Cacuaco	628	490	138	28%
Luanda	Samba	225	165	60	36%
Luanda	Viana	1794	1399	395	28%
Lunda Norte	Cambulo	11669	7551	4118	55%
Lunda Norte	Capenda	11254	6948	4307	62%
Lunda Norte	Caungula	10104	5061	5042	100%
Lunda Norte	Chitato	9852	4712	5141	109%
Lunda Norte	Cuango	9707	7295	2412	33%
Lunda Norte	Cuilo	9380	4373	5007	114%
Lunda Norte	Lubalo	13311	6241	7070	113%
Lunda Norte	Lucapa	17084	8378	8706	104%

Lunda Norte	Xá Muteba	23285	15801	7484	47%
Lunda Sul	Cacolo	13256	7497	5760	77%
Lunda Sul	Dala	19579	12643	6936	55%
Lunda Sul	Muconda	40046	27967	12079	43%
Lunda Sul	Saurimo	31695	22247	9448	42%
Malanje	Cacuzo	18460	18365	95	1%
Malanje	Calandula	17531	17406	125	1%
Malanje	Cambundi-Catembo	9051	7642	1409	18%
Malanje	Cangandala	9267	7801	1466	19%
Malanje	Caombo	6464	4815	1649	34%
Malanje	Cuaba Nzogo	4462	3607	855	24%
Malanje	Cunda-dia-Baza	2110	1439	671	47%
Malanje	Luquembo	15778	12951	2827	22%
Malanje	Malanje	13588	13556	32	0%
Malanje	Marimba	4449	3423	1026	30%
Malanje	Massango	3826	2990	837	28%
Malanje	Mucari	3494	2806	688	25%
Malanje	Quela	2565	1866	699	37%
Malanje	Quirima	11249	8275	2974	36%
Moxico	Alto Zambeze	19699	15206	4493	30%
Moxico	Camanongue	6734	6399	335	5%
Moxico	Cameia	1802	1209	593	49%
Moxico	Léua	8382	8204	179	2%
Moxico	Luau	8952	8999	-48	-1%
Moxico	Lucano	4077	2345	1732	74%
Moxico	Luchazes	6281	3838	2443	64%
Moxico	Lumbala-Nguimbo	15290	12236	3055	25%
Moxico	Moxico	19322	15506	3817	25%
Namibe	Bibala	18033	19091	-1058	-6%
Namibe	Camacuio	8974	9568	-593	-6%
Namibe	Namibe	1993	1785	208	12%
Namibe	Tombwa	989	701	287	41%
Namibe	Virei	5406	4827	579	12%
Uíge	Alto Cauale	6976	6109	866	14%
Uíge	Ambuila	5852	3535	2317	66%
Uíge	Bembe	6892	4525	2367	52%
Uíge	Buengas	3062	1557	1505	97%
Uíge	Bungo	2962	1929	1033	54%
Uíge	Damba	9070	6336	2734	43%
Uíge	Maquela do Zombo	23828	22363	1465	7%
Uíge	Milunga	6947	4386	2561	58%
Uíge	Mucaba	975	447	528	118%
Uíge	Negage	1920	905	1015	112%
Uíge	Puri	2308	1882	426	23%
Uíge	Quimbele	8680	5848	2831	48%
Uíge	Quitexe	4183	2913	1271	44%
Uíge	Sanza Pombo	6443	4320	2123	49%
Uíge	Songo	5350	4349	1002	23%
Uíge	Uíge	5409	5255	154	3%
Zaire	Cuimba	3649	3391	257	8%
Zaire	M'Banza Congo	1865	1594	271	17%
Zaire	N'Zeto	2963	2655	308	12%



Zaire	Noqui	160	87	73	84%
Zaire	Soyo	4107	4233	-126	-3%
Zaire	Tomboco	985	812	172	21%
<b>Total</b>		<b>2715946</b>	<b>2624574</b>	<b>91371</b>	<b>3%</b>

**MT (Metric tons):** 1 MT is equivalent to 1,000 kilograms.

**Change:** refers to the relative difference and is calculated as (2024 prod – 2023 prod) divided by 2023 prod.

**Suggested Citation:** Ndoye, A., M. Dia, and K. Dia. 2024. AAgWa Crop Production Forecasts Brief Series: Angola – Maize. AAgWa Crop Production Forecasts Brief Series, No. 111. Kigali: AKADEMIYA2063.

<https://doi.org/10.54067/acpf.111>