

AAGWa Crop Production Forecasts Brief Series

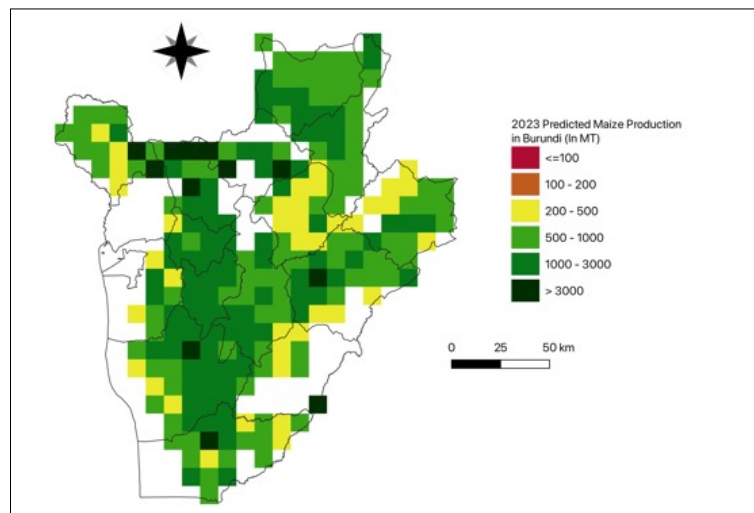
Burundi – Maize

Aissatou Ndoye*, Khadim Dia**, and Racine Ly***

No. 11, March 2023

The crop production forecast brief series by AKADEMIYA2063's Africa Agriculture Watch (AAGWa) aims to provide more accurate and timely data on harvest and yields for nine major crops across nearly 50 African countries. The timeliness, wide availability, and easy access to this type of data will allow stakeholders across the value chain to better plan and execute policy and business actions more efficiently. The data published in the briefs are generated through the Africa Crop Production (AfCP) model, an Artificial Intelligence (AI-based) model applied to remotely sensed geobiophysical data to produce estimates at pixel as well as administrative levels as early as the beginning of every growing season. In Brief 11, we provide forecasts on Maize production in Burundi.

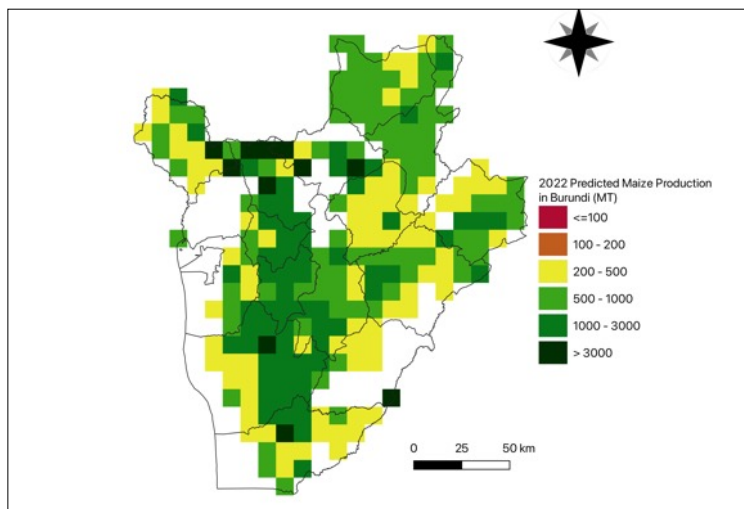
Figure 1. Burundi 2023 maize production.



Data Source: Africa Agriculture Watch (www.aagwa.org).

In 2023, maize production in Burundi is projected to experience an increase of 21% compared to 2022 production levels, with an annual production estimated at 288,826 metric tons. The central regions are expected to produce the most significant volumes of maize, particularly in Mugamba (Bururi), Bukinanyana (Cibitoke), Kabarore (Kayanza) and Bururi. The estimated production for each of these areas are respectively 9,929 MT, 8,943 MT, 8,583 MT, and 8,344 MT. In contrast, lower production values are observed in Rugazi (Bubanza), Mugongomanga (Bujumbura Rural), Isale (Bujumbura Rural), and Muhuta (Bujumbura Rural) with production values estimated at 339, 340, 342, and 351 metric tons, respectively.

Figure 2. Burundi 2022 maize production forecast.



Data Source: Africa Agriculture Watch (www.aagwa.org).

Moreover, the most significant maize production increases in 2023 are expected in Butihinda (Muyinga), Bururi, Nyanza-Lac (Makamba), and Muramvya with absolute differences of 1,599 MT, 1,555 MT, 1,331 MT, and 1,245 MT, respectively, corresponding to changes of 40%, 23%, 38%, and 35%.

Moreover, the most significant maize production increases in 2023 are expected in Butihinda (Muyinga), Bururi, Nyanza-Lac (Makamba), and Muramvya with absolute differences of 1,599 MT, 1,555 MT, 1,331 MT, and 1,245 MT, respectively, corresponding to changes of 40%, 23%, 38%, and 35%.

*Associate Scientist, Department of Data Management, Digital Products, and Technology, AKADEMIYA2063


** Senior Associate Scientist, Department of Data Management, Digital Products, and Technology, AKADEMIYA2063

***Director, Department of Data Management, Digital Products, and Technology, AKADEMIYA2063




Annex – 2023 Burundi Maize Production Forecast at District level

Provinces	Communes	2023 Prod (MT)	2022 Prod (MT)	Absolute Difference (MT)	Change (%)
Bubanza	Musigati	696	510	186	37%
Bubanza	Rugazi	339	272	67	25%
Bujumbura Rural	Bugarama	690	505	184	37%
Bujumbura Rural	Isale	342	277	66	24%
Bujumbura Rural	Mugongomanga	340	274	66	24%
Bujumbura Rural	Muhuta	351	284	66	23%
Bujumbura Rural	Mukike	1457	1045	413	39%
Bujumbura Rural	Mutambu	1256	879	376	43%
Bujumbura Rural	Nyabiraba	1788	1414	374	26%
Bururi	Burambi	3108	2510	598	24%
Bururi	Bururi	8344	6789	1555	23%
Bururi	Buyengero	3442	3065	377	12%
Bururi	Matana	2255	1949	306	16%
Bururi	Mugamba	9929	8899	1030	12%
Bururi	Rumonge	1678	1272	406	32%
Bururi	Rutovu	3186	2407	779	32%
Bururi	Songa	4495	3905	590	15%
Bururi	Vyanda	5256	4319	936	22%
Cankuzo	Cankuzo	5517	4604	913	20%
Cankuzo	Cendajuru	1699	1223	476	39%
Cankuzo	Gisagara	4995	3898	1097	28%
Cankuzo	Kigamba	2033	1786	247	14%
Cankuzo	Mishiha	3835	2810	1024	36%
Cibitoke	Buganda	1052	801	250	31%
Cibitoke	Bukinanyana	8943	8765	178	2%
Cibitoke	Mabayi	5036	4239	797	19%
Cibitoke	Mugina	1199	907	292	32%
Cibitoke	Murwi	883	692	191	28%
Cibitoke	Rugombo	1200	1006	193	19%
Gitega	Bugendana	1285	904	381	42%
Gitega	Bukirasazi	2398	2116	282	13%
Gitega	Buraza	2340	1804	535	30%
Gitega	Giheta	2396	1798	597	33%
Gitega	Gishubi	4949	4413	537	12%
Gitega	Gitega	2369	1703	666	39%
Gitega	Itaba	1801	1347	455	34%
Gitega	Makebukoko	1933	1364	570	42%
Gitega	Nyanrusange	3254	2723	531	20%
Gitega	Ryansoro	2042	1467	574	39%
Karuzi	Bugenyuzi	2675	2135	540	25%
Karuzi	Buhiga	1060	812	249	31%
Karuzi	Gihogazi	1424	1036	388	37%
Karuzi	Gitaramuka	852	680	171	25%



Provinces	Communes	2023 Prod (MT)	2022 Prod (MT)	Absolute Difference (MT)	Change (%)
Karuzi	Mutumba	3087	2623	464	18%
Karuzi	Nyabikere	800	642	158	25%
Karuzi	Shombo	1391	1017	373	37%
Kayanza	Butaganzwa1	2725	2511	214	9%
Kayanza	Gahombo	1831	1451	380	26%
Kayanza	Gatara	635	470	165	35%
Kayanza	Kabarore	8583	8375	208	2%
Kayanza	Kayanza	734	534	201	38%
Kayanza	Matongo	6309	6065	243	4%
Kayanza	Muruta	2182	1863	318	17%
Kayanza	Rango	4956	4428	528	12%
Kirundo	Bugabira	2304	1667	637	38%
Kirundo	Busoni	3140	2374	766	32%
Kirundo	Bwambarangwe	1505	1116	390	35%
Kirundo	Gitobe	1801	1281	520	41%
Kirundo	Kirundo	2042	1450	592	41%
Kirundo	Ntega	3782	2658	1124	42%
Kirundo	Vumbi	3181	2218	963	43%
Makamba	Kayogoro	2751	2087	663	32%
Makamba	Kibago	595	445	150	34%
Makamba	Mabanda	2215	1680	535	32%
Makamba	Makamba	7436	6298	1138	18%
Makamba	Nyanza-Lac	4839	3508	1331	38%
Makamba	Vugizo	6893	6531	361	6%
Muramvya	Bukeye	2343	2047	295	14%
Muramvya	Mbuye	2455	2186	269	12%
Muramvya	Muramvya	4828	3583	1245	35%
Muramvya	Rutegama	3411	2656	755	28%
Muyinga	Buhinyuza	1976	1470	506	34%
Muyinga	Butihinda	5626	4027	1599	40%
Muyinga	Gasorwe	2322	1647	674	41%
Muyinga	Giteranyi	3773	3282	491	15%
Muyinga	Muyinga	2403	1739	665	38%
Muyinga	Mwakiro	671	499	172	35%
Mwaro	Bisoro	3380	2631	749	28%
Mwaro	Gisozi	3364	2662	702	26%
Mwaro	Kayokwe	2363	1733	630	36%
Mwaro	Ndava	2991	2218	773	35%
Mwaro	Nyabihanga	1944	1585	358	23%
Mwaro	Rusaka	1415	1033	382	37%
Ngozi	Busiga	3649	3631	18	0%
Ngozi	Gashikanwa	2296	1994	302	15%
Ngozi	Kirembe	729	531	198	37%
Ngozi	Marangara	1116	772	344	45%



Provinces	Communes	2023 Prod (MT)	2022 Prod (MT)	Absolute Difference (MT)	Change (%)
Ngozi	Mwumba	552	415	137	33%
Ngozi	Ngozi	3302	3206	96	3%
Ngozi	Nyamurenza	1141	792	349	44%
Ngozi	Ruhororo	2923	2745	178	6%
Ngozi	Tangara	6076	5783	293	5%
Rutana	Bukemba	3550	3986	-436	-11%
Rutana	Gitanga	751	544	207	38%
Rutana	Mpinga-Kayove	1193	895	298	33%
Rutana	Musongati	1156	924	232	25%
Rutana	Rutana	774	559	215	38%
Ruyigi	Butaganzwa2	5026	3819	1207	32%
Ruyigi	Butezi	2958	2092	866	41%
Ruyigi	Bweru	2914	2149	764	36%
Ruyigi	Gisuru	5547	4412	1135	26%
Ruyigi	Kinyinya	364	291	73	25%
Ruyigi	Nyabitsinda	535	404	131	32%
Ruyigi	Ruyigi	5178	4363	815	19%
Total		288826	238206	50620	21%

MT (Metric tons): 1 MT is equivalent to 1,000 kilograms

Change: refers to the relative difference and is calculated as (2023 prod – 2022 prod) divided by 2022 prod

Suggested Citation: Ndoye, A., K. Dia, and R. Ly. 2023. AAgWa Crop Production Forecasts Brief Series: Burundi – Maize. AAgWa Crop Production Forecasts Brief Series, No.11. Kigali, Rwanda: AKADEMIYA2063. <https://doi.org/10.54067/acpf.11>