

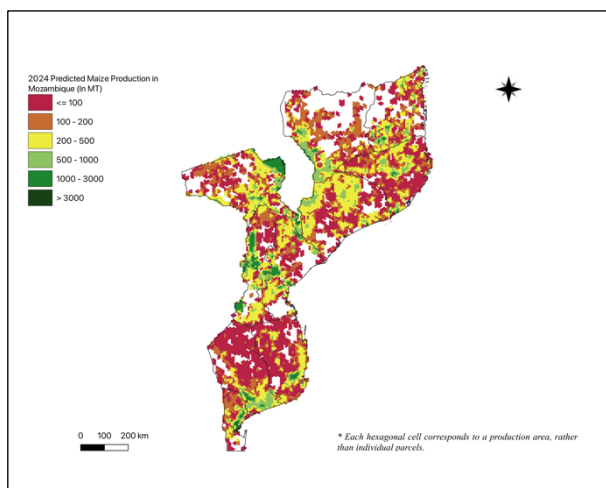
AAGWa Crop Production Forecasts Brief Series Mozambique – Maize

Aïssatou Ndoye*, Mansour Dia**, and Khadim Dia***

No. 126, April 2024

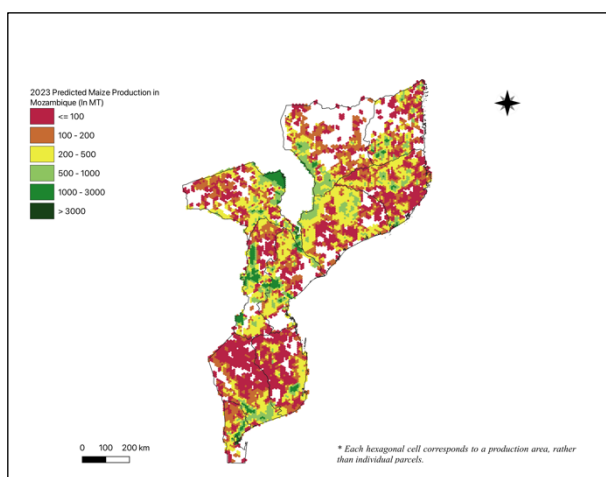
The crop production forecast brief series by AKADEMIYA2063's Africa Agriculture Watch (AAGWa) aims to provide more accurate and timely data on harvest and yields for ten major crops across nearly 50 African countries. The timeliness, wide availability, and easy access to this type of data will allow stakeholders across the value chain to better plan and execute policy and business actions more efficiently.

Figure 1. Mozambique 2024 Maize production forecast.



Data source: Africa Agriculture Watch (www.aagwa.org).

Figure 2. Mozambique 2023 Maize production forecast.



Data source: Africa Agriculture Watch (www.aagwa.org).

The data published in the briefs are generated through the Africa Crop Production (AfCP) model, an Artificial Intelligence (AI-based) model applied to remotely sensed geo-biophysical data to produce estimates at pixel as well as administrative levels as early as the beginning of every growing season. In Brief 126, we provide forecasts on maize production in Mozambique.

In 2024, maize production in Mozambique is projected to decline by 10% over 2023 production levels with an annual production volume of 1,536,782 metric tons (MT). The highest maize producers are expected to be Angónia (Tete), Barue (Manica), Manica, Milange (Zambezia), and Mecanhelas (Nassa), with production levels estimated at 52,126 MT, 51,483 MT, 43,204 MT, 43,098 MT, and 42,038 MT, respectively. In comparison, lower production values are observed in Inhassunge (Zambezia), Quissanga (Cabo Delgado), Pemba (Cabo Delgado), Inhassoro (Inhambane), and Matutuíne (Maputo), with production of, respectively, 23 MT, 153 MT, 312 MT, 474 MT, and 760 MT.

Compared to 2023, the most significant maize production declines in 2024 are expected to occur in areas such as Milange, Mecanhelas, Manica, Morrumbala (Zambezia), and Barue, with reductions of respectively 7,252 MT, 6,145 MT, 4,215 MT, 3,738 MT, and 3,689 MT. These correspond to changes of respectively, -14%, -13%, -9%, -12%, and -7%.

*Associate Scientist, Department of Data Management, Digital Products, and Technology, AKADEMIYA2063

**Associate Scientist, Department of Data Management, Digital Products, and Technology, AKADEMIYA2063


***Senior Associate Scientist, Department of Data Management, Digital Products, and Technology, AKADEMIYA2063

Nevertheless, districts such as Boane (Maputo City), Mecula (Nassa), Mavago (Nassa), and Quissanga (Cabo Delgado) are expected to experience the highest increases with levels of respectively, 99 MT, 81 MT, 27 MT, and 8 MT. These correspond to changes of respectively, 4%, 6%, 1%, and 6%.

Annex – 2024 Mozambique Maize Production Forecast at District Level

Provinces	Districts	2024 Production (MT)	2023 Production (MT)	Difference (MT)	Change (%)
Cabo Delgado	Ancuabe	13900	14726	-826	-6%
Cabo Delgado	Balama	14150	15502	-1352	-9%
Cabo Delgado	Chiúre	7617	8425	-807	-10%
Cabo Delgado	Macomia	3970	4087	-117	-3%
Cabo Delgado	Meluco	2538	2643	-105	-4%
Cabo Delgado	Mocimboa da Praia	4831	4904	-73	-1%
Cabo Delgado	Montepuez	19205	20808	-1603	-8%
Cabo Delgado	Mueda	4939	5128	-189	-4%
Cabo Delgado	Muidumbe	2757	2812	-56	-2%
Cabo Delgado	Namuno	26018	28723	-2705	-9%
Cabo Delgado	Nangade	10211	10814	-603	-6%
Cabo Delgado	Palma	3828	4100	-272	-7%
Cabo Delgado	Pemba	312	327	-15	-5%
Cabo Delgado	Quissanga	153	145	8	6%
Gaza	Bilene	11090	12058	-967	-8%
Gaza	Chibuto	16044	17110	-1066	-6%
Gaza	Chicualacuala	8770	10875	-2105	-19%
Gaza	Chigubo	6739	8794	-2055	-23%
Gaza	Chókwè	27080	28214	-1134	-4%
Gaza	Guijá	14285	15324	-1039	-7%
Gaza	Mabalane	7320	8581	-1261	-15%
Gaza	Mandlakazi	18934	19971	-1036	-5%
Gaza	Massangena	2502	3622	-1121	-31%
Gaza	Massingir	5699	6414	-715	-11%
Gaza	Xai-Xai	14551	15261	-710	-5%
Inhambane	Funhalouro	9737	12233	-2495	-20%
Inhambane	Govuro	1054	1508	-453	-30%
Inhambane	Homoine	16149	16758	-610	-4%
Inhambane	Inharrime	2604	3243	-638	-20%
Inhambane	Inhassoro	474	648	-174	-27%
Inhambane	Jangamo	3189	3327	-138	-4%
Inhambane	Mabote	15055	18119	-3064	-17%
Inhambane	Massinga	10609	11853	-1244	-10%
Inhambane	Morrumbene	12360	13201	-841	-6%
Inhambane	Panda	10940	11820	-880	-7%
Inhambane	Vilanculos	7588	8599	-1011	-12%
Inhambane	Zavala	5824	6418	-595	-9%
Manica	Barue	51483	55171	-3689	-7%
Manica	Gondola	33363	36370	-3007	-8%
Manica	Guro	10749	12174	-1424	-12%
Manica	Machaze	24745	28298	-3553	-13%
Manica	Macossa	1957	2925	-968	-33%
Manica	Manica	43204	47419	-4215	-9%
Manica	Mossurize	25940	26624	-684	-3%
Manica	Sussundenga	21837	25149	-3312	-13%

Manica	Tambara	4686	5381	-695	-13%
Maputo	Boane	3435	3543	-108	-3%
Maputo	Magude	10095	11358	-1263	-11%
Maputo	Manhiça	16656	17565	-909	-5%
Maputo	Marracuene	6285	6341	-56	-1%
Maputo	Matutuíne	760	979	-219	-22%
Maputo	Moamba	10622	11281	-659	-6%
Maputo	Namaacha	2911	4010	-1099	-27%
Maputo City	Boane	2310	2211	99	4%
Maputo City	Maputo	7813	7818	-6	0%
Nampula	Angoche	4902	5343	-441	-8%
Nampula	Erati	8206	9371	-1165	-12%
Nampula	Lalaua	7108	8560	-1451	-17%
Nampula	Malema	10396	12197	-1801	-15%
Nampula	Meconta	4170	4792	-622	-13%
Nampula	Mecuburi	24096	27448	-3352	-12%
Nampula	Memba	3322	3879	-557	-14%
Nampula	Mogovolas	5902	6788	-885	-13%
Nampula	Moma	14984	16236	-1253	-8%
Nampula	Monapo	7357	8311	-953	-11%
Nampula	Mongincual	1554	2194	-640	-29%
Nampula	Mossuril	2255	2742	-486	-18%
Nampula	Muecate	11758	13568	-1811	-13%
Nampula	Murrupula	2420	2945	-525	-18%
Nampula	Nacala Velha	2030	2302	-272	-12%
Nampula	Namapa	11025	12349	-1323	-11%
Nampula	Nampula	20379	21925	-1546	-7%
Nampula	Ribaue	11897	13489	-1592	-12%
Nassa	Cuamba	24628	27380	-2751	-10%
Nassa	Lago	5659	6979	-1320	-19%
Nassa	Lichinga	22286	25607	-3322	-13%
Nassa	Majune	4032	4440	-408	-9%
Nassa	Mandimba	12068	13521	-1453	-11%
Nassa	Marrupa	8189	8518	-329	-4%
Nassa	Maúá	5945	6822	-877	-13%
Nassa	Mavago	2928	2901	27	1%
Nassa	Mecanhelas	42038	48184	-6145	-13%
Nassa	Mecula	1505	1425	81	6%
Nassa	Metarica	5016	5890	-875	-15%
Nassa	Muembe	4304	5218	-914	-18%
Nassa	N'gauma	10685	12241	-1556	-13%
Nassa	Nipepe	4755	5638	-883	-16%
Nassa	Sanga	6730	7667	-937	-12%
Sofala	Buzi	24488	28100	-3611	-13%
Sofala	Caia	17907	19149	-1242	-6%
Sofala	Chemba	10257	11015	-757	-7%
Sofala	Cheringoma	3991	5209	-1218	-23%
Sofala	Chibabava	11828	14014	-2186	-16%
Sofala	Dondo	8246	9013	-766	-9%
Sofala	Gorongosa	11188	12964	-1775	-14%
Sofala	Machanga	2636	2853	-217	-8%
Sofala	Maringue	12887	14876	-1989	-13%



Sofala	Marromeu	8273	9308	-1034	-11%
Sofala	Muanza	2591	3472	-881	-25%
Sofala	Nhamatanda	35065	36693	-1628	-4%
Tete	Angónia	52126	55059	-2934	-5%
Tete	Cahora Bassa	10032	10847	-815	-8%
Tete	Changara	36961	39001	-2040	-5%
Tete	Chifunde	8431	9287	-855	-9%
Tete	Chiuta	15138	16576	-1438	-9%
Tete	Macanga	22337	25797	-3459	-13%
Tete	Magoe	8792	9127	-334	-4%
Tete	Maravia	12522	13685	-1163	-8%
Tete	Moatize	23957	26778	-2821	-11%
Tete	Mutarara	27114	28883	-1769	-6%
Tete	Tsangano	26025	28213	-2189	-8%
Tete	Zumbu	5635	6465	-830	-13%
Zambezia	Alto Molocue	19959	23405	-3446	-15%
Zambezia	Chinde	2079	2561	-482	-19%
Zambezia	Gile	3848	4717	-869	-18%
Zambezia	Gurue	17288	20409	-3121	-15%
Zambezia	Ile	21535	24506	-2971	-12%
Zambezia	Inhassunge	23	57	-35	-60%
Zambezia	Lugela	8172	9909	-1737	-18%
Zambezia	Maganja da Costa	11609	13466	-1856	-14%
Zambezia	Milange	43098	50350	-7252	-14%
Zambezia	Mocuba	12155	14052	-1897	-13%
Zambezia	Mopeia	6732	7990	-1258	-16%
Zambezia	Morrumbala	28192	31930	-3738	-12%
Zambezia	Namacurra	2494	2869	-375	-13%
Zambezia	Namarroi	10747	12620	-1873	-15%
Zambezia	Nicoadala	2739	3209	-470	-15%
Zambezia	Pebane	11277	12811	-1533	-12%
Total		1536782	1709820	-173038	-10%

MT (Metric tons): 1 MT is equivalent to 1,000 kilograms.

Change: refers to the relative difference and is calculated as (2024 prod – 2023 prod) divided by 2023 prod.

Suggested Citation: Ndoye, A., M. Dia, and K. Dia. 2024. AAgWa Crop Production Forecasts Brief Series: Mozambique – Maize. AAgWa Crop Production Forecasts Brief Series, No. 126. Kigali: AKADEMIYA2063.

<https://doi.org/10.54067/acpf.126>