

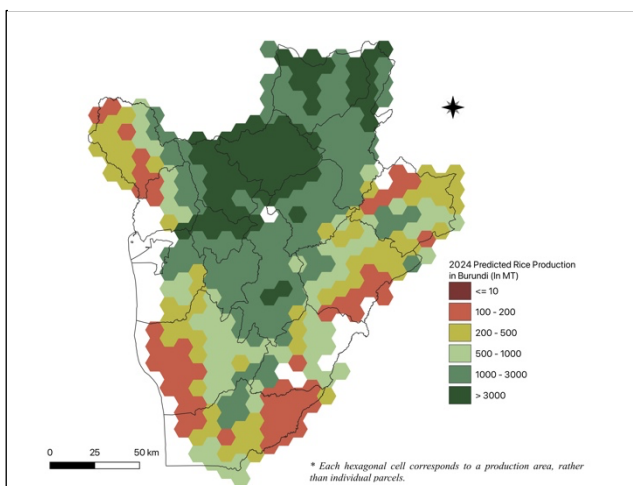
# AAGWa Crop Production Forecasts Brief Series Burundi – Beans

Aïssatou Ndoye\*, Mansour Dia\*\*, and Khadim Dia\*\*\*

No. 127, April 2024

The crop production forecast brief series by AKADEMIYA2063's Africa Agriculture Watch (AAGWa) aims to provide more accurate and timely data on harvest and yields for ten major crops across nearly 50 African countries. The timeliness, wide availability, and easy access to this type of data will allow stakeholders across the value chain to better plan and execute policy and business actions more

Figure 1. Burundi 2024 Beans production forecast.



Data source: Africa Agriculture Watch ([www.aagwa.org](http://www.aagwa.org)).

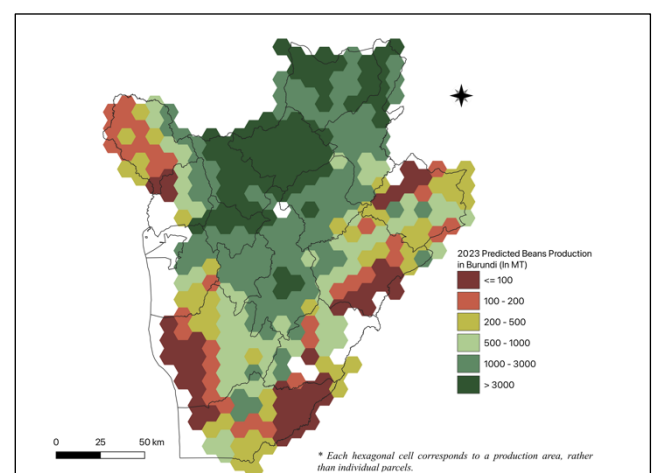
significant beans production levels are expected in the Northern areas, particularly in Butihinda (Muyinga), Busoni (Kirundo), Kiremba (Ngozi), Muramvya, and Bugabira (Kirundo), with production volumes estimated at 13,974 MT, 13,753 MT, 12,100 MT, 10,852 MT, and 9,995 MT, respectively. In comparison, lower production values are observed in districts such as Bubanza, Kinyinya (Ruyigi), Kibago (Makamba), and Nyabitsinda (Ruyigi), with production of 154 MT, 156 MT, 162 MT, and 193 MT, respectively.

Moreover, communes in the Southern and Eastern areas are expected to experience the most significant beans production increases in 2024, particularly in Nyanza-Lac (Makamba), Gisuru (Ruyigi), Makamba, and Bururi, with differences of 552 MT, 539 MT, 515 MT, and 481 MT, respectively. These correspond to changes of, respectively, 36%, 28%, 16%, and 25%.

efficiently. The data published in the briefs are generated through the Africa Crop Production (AfCP) model, an Artificial Intelligence (AI-based) model applied to remotely sensed geo-biophysical data to produce estimates at pixel as well as administrative levels as early as the beginning of every growing season. In Brief 127, we provide forecasts on Beans production in Burundi.

In 2024, beans production in Burundi is projected to reach 387,570 metric tons (MT), indicating a 2% increase over 2023 production levels. The most

Figure 2. Burundi 2023 Beans production forecast.



Data source: Africa Agriculture Watch ([www.aagwa.org](http://www.aagwa.org)).

\*Associate Scientist, Department of Data Management, Digital Products, and Technology, AKADEMIYA2063

\*\*Associate Scientist, Department of Data Management, Digital Products, and Technology, AKADEMIYA2063

\*\*\*Senior Associate Scientist, Department of Data Management, Digital Products, and Technology, AKADEMIYA2063

## Annex – 2024 Burundi Beans Production Forecast at District Level

Provinces	Communes	2024 Production (MT)	2023 Production (MT)	Difference (MT)	Change (%)
Bubanza	Bubanza	154	75	79	105%
Bubanza	Musigati	5088	4769	318	7%
Bubanza	Rugazi	2783	2607	176	7%
Bujumbura Rural	Bugarama	262	139	123	88%
Bujumbura Rural	Mukike	716	467	249	53%
Bujumbura Rural	Mutambu	1069	960	109	11%
Bujumbura Rural	Nyabiraba	1301	1183	118	10%
Bururi	Burambi	764	491	272	55%
Bururi	Bururi	2435	1953	481	25%
Bururi	Buyengero	751	564	186	33%
Bururi	Matana	718	618	100	16%
Bururi	Mugamba	2272	1833	439	24%
Bururi	Rumonge	474	236	238	101%
Bururi	Rutovu	1028	825	203	25%
Bururi	Songa	1558	1354	205	15%
Bururi	Vyanda	1797	1433	364	25%
Cankuzo	Cankuzo	3470	3046	424	14%
Cankuzo	Cendajuru	818	637	180	28%
Cankuzo	Gisagara	3634	3219	416	13%
Cankuzo	Kigamba	484	260	224	86%
Cankuzo	Mishiha	1648	1221	426	35%
Cibitoke	Buganda	463	305	158	52%
Cibitoke	Bukinanyana	3745	3326	419	13%
Cibitoke	Mabayi	3179	2749	430	16%
Cibitoke	Mugina	527	363	164	45%
Cibitoke	Murwi	354	191	163	85%
Cibitoke	Rugombo	504	347	157	45%
Gitega	Bugendana	2106	2009	97	5%
Gitega	Bukirasazi	2659	2622	38	1%
Gitega	Buraza	2232	1997	235	12%
Gitega	Giheta	4312	4124	188	5%
Gitega	Gishubi	5528	5491	37	1%
Gitega	Gitega	6138	6014	125	2%
Gitega	Itaba	4059	3792	268	7%
Gitega	Makebuko	7072	7274	-203	-3%
Gitega	Nyanrusange	5254	5176	78	1%
Gitega	Ryansoro	6983	7195	-212	-3%
Karuzi	Bugenyuzi	7727	7620	106	1%
Karuzi	Buhiga	4953	4845	108	2%
Karuzi	Gihogazi	3144	3186	-41	-1%
Karuzi	Gitaramuka	4274	4236	39	1%
Karuzi	Mutumba	3046	2719	327	12%
Karuzi	Nyabikere	4063	3868	195	5%
Karuzi	Shombo	5400	5355	45	1%
Kayanza	Butaganzwa1	4119	4348	-229	-5%
Kayanza	Gahombo	3967	4166	-199	-5%
Kayanza	Gatara	4155	4393	-238	-5%
Kayanza	Kabarore	7932	8018	-86	-1%
Kayanza	Kayanza	3916	4105	-189	-5%

Kayanza	Matongo	7858	8221	-363	-4%
Kayanza	Muhanga	2489	2435	55	2%
Kayanza	Muruta	4957	5075	-118	-2%
Kayanza	Rango	7617	7953	-336	-4%
Kirundo	Bugabira	9995	10322	-327	-3%
Kirundo	Busoni	13753	13759	-6	0%
Kirundo	Bwambarangwe	8043	8527	-484	-6%
Kirundo	Gitobe	5863	5984	-122	-2%
Kirundo	Kirundo	7026	7298	-272	-4%
Kirundo	Ntega	6827	6650	178	3%
Kirundo	Vumbi	8703	8744	-41	0%
Makamba	Kayogoro	667	334	332	99%
Makamba	Kibago	162	76	86	113%
Makamba	Mabanda	589	408	181	44%
Makamba	Makamba	3776	3261	515	16%
Makamba	Nyanza-Lac	2077	1525	552	36%
Makamba	Vugizo	3045	2778	267	10%
Muramvya	Bukeye	3453	3533	-80	-2%
Muramvya	Mbuye	3395	3483	-88	-3%
Muramvya	Muramvya	10852	11046	-193	-2%
Muramvya	Rutegama	5115	5185	-70	-1%
Muyinga	Buhinyuza	3416	3048	368	12%
Muyinga	Butihinda	13974	14031	-58	0%
Muyinga	Gasorwe	5132	5052	79	2%
Muyinga	Giteranyi	8398	8440	-41	0%
Muyinga	Muyinga	5342	5166	177	3%
Muyinga	Mwakiro	1157	1037	120	12%
Mwaro	Bisoro	2137	1924	213	11%
Mwaro	Gisozi	2136	1916	220	11%
Mwaro	Kayokwe	3236	3000	236	8%
Mwaro	Ndava	2075	1839	236	13%
Mwaro	Nyabihanga	1204	1083	120	11%
Mwaro	Rusaka	1379	1263	115	9%
Ngozi	Busiga	3666	3799	-134	-4%
Ngozi	Gashikanwa	4217	4464	-246	-6%
Ngozi	Kirembe	12100	12763	-663	-5%
Ngozi	Marangara	5779	5839	-59	-1%
Ngozi	Mwumba	8707	9277	-570	-6%
Ngozi	Ngozi	3851	4027	-176	-4%
Ngozi	Nyamurenza	8938	9540	-602	-6%
Ngozi	Ruhororo	8387	8859	-472	-5%
Ngozi	Tangara	3665	3805	-140	-4%
Rutana	Bukemba	621	414	207	50%
Rutana	Gitanga	1438	1314	123	9%
Rutana	Mpinga-Kayove	1784	1562	222	14%
Rutana	Musongati	368	194	174	90%
Rutana	Rutana	1244	1121	124	11%
Ruyigi	Butaganzwa2	3065	2656	409	15%
Ruyigi	Butezi	1351	1159	192	17%
Ruyigi	Bweru	1308	962	346	36%
Ruyigi	Gisuru	2497	1959	539	28%
Ruyigi	Kinyinya	156	75	81	108%



Ruyigi	Nyabitsinda	193	108	85	79%
Ruyigi	Ruyigi	3351	3069	282	9%
<b>Total</b>		<b>387570</b>	<b>379087</b>	<b>8483</b>	<b>2%</b>

**MT (Metric tons):** 1 MT is equivalent to 1,000 kilograms.

**Change:** refers to the relative difference and is calculated as (2024 prod – 2023 prod) divided by 2023 prod.

**Suggested Citation:** Ndoye, A., M. Dia, and K. Dia. 2024. AAgWa Crop Production Forecasts Brief Series: Burundi – Beans. AAgWa Crop Production Forecasts Brief Series, No. 127. Kigali: AKADEMIYA2063.  
<https://doi.org/10.54067/acpf.127>