

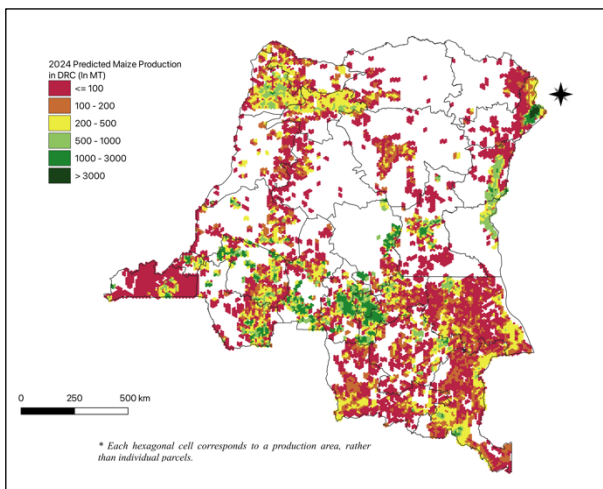
AAGWa Crop Production Forecasts Brief Series Democratic Republic of the Congo – Maize

Aïssatou Ndoye*, Mansour Dia**, and Khadim Dia***

No. 137, May 2024

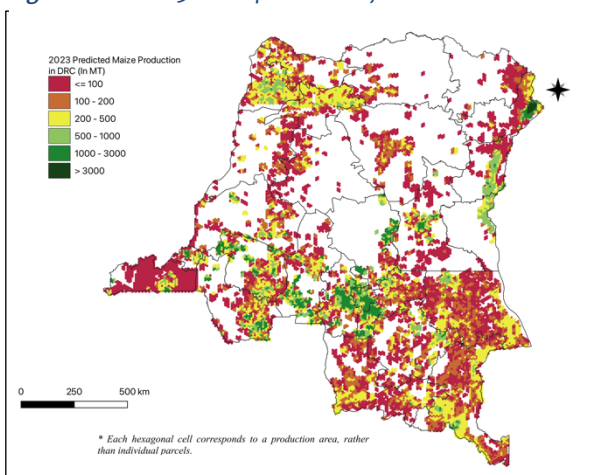
The crop production forecast brief series by AKADEMIYA2063's Africa Agriculture Watch (AAGWa) aims to provide more accurate and timely data on harvest and yields for ten major crops across nearly 50 African countries. The timeliness, wide availability, and easy access to this type of data will allow stakeholders across the value chain to better plan and execute policy and business actions more efficiently.

Figure 1. DRC 2024 Maize production forecast.



Data source: Africa Agriculture Watch (www.aagwa.org).

Figure 2. DRC 2023 Maize production forecast.



Data source: Africa Agriculture Watch (www.aagwa.org).

The data published in the briefs are generated through the Africa Crop Production (AfCP) model, an Artificial Intelligence (AI-based) model applied to remotely sensed geo-biophysical data to produce estimates at pixel as well as administrative levels as early as the beginning of every growing season. In Brief 137, we provide forecasts on maize production in the Democratic Republic of Congo (DRC).

In 2024, maize production in DRC is projected to decline by 6% compared to 2023 production levels, corresponding to an annual production of 2,195,722 metric tons (MT). The highest maize producers are expected in districts such as Kamonia (Kasaï), Djugu (Ituri), Kahemba (Kwango), Dibaya (Kasaï-Central), and Lulu (Kasaï-Central), with production levels estimated at 92,397 MT, 75,781 MT, 71,394 MT, 71,134 MT, and 67,905 MT, respectively. In comparison, lower production values are observed in Uvira (ville) (Sud-Kivu), Shabunda (Sud-Kivu), Inongo (ville) (Mai-Ndombe), Boma (Kongo-Central), and Poko (Bas-Uele), with production of, respectively, 24 MT, 24 MT, 26 MT, 26 MT, and 27 MT.

Contrary to the trends observed in 2023, significant declines in maize production for 2024 are expected in areas such as Manono (Tanganyika), Moba (Tanganyika), Kasenga (Haut-Katanga), Pweto (Haut-Katanga), and

Dilolo (Lualaba), with reductions of respectively -6,268 MT, -5,715 MT, -5,077 MT, -4,980 MT, and -4,774 MT. These represent changes of respectively, -14%, -13%, -16%, -12%, and -12%.

*Associate Scientist, Department of Data Management, Digital Products, and Technology, AKADEMIYA2063

**Associate Scientist, Department of Data Management, Digital Products, and Technology, AKADEMIYA2063

***Senior Associate Scientist, Department of Data Management, Digital Products, and Technology, AKADEMIYA2063

However, the 2024 projections also indicate increases in maize production in different districts such as Bumba (Mongala), Masisi (Nord-Kivu), Katako-Kombe (Sankuru), and Budjala (Sud-Ubangi), with differences of respectively 514 MT, 378 MT, 353 MT, and 224 MT. These correspond to changes of 1%, 2%, 1%, and 1% respectively.

Annex – 2024 DRC Maize Production Forecast at District Level

Provinces	Districts	2024 Production (MT)	2023 Production (MT)	Difference (MT)	Change (%)
Bas-Uele	Aketi	8114	8774	-660	-8%
Bas-Uele	Aketi (ville)	741	738	3	0%
Bas-Uele	Bambesa	28	47	-19	-40%
Bas-Uele	Bondo	1693	2126	-433	-20%
Bas-Uele	Buta	3663	3844	-180	-5%
Bas-Uele	Poko	27	48	-20	-42%
Équateur	Basankusu	4664	5190	-525	-10%
Équateur	Basankusu (ville)	299	292	7	2%
Équateur	Bikoro	440	480	-40	-8%
Équateur	Bolomba	2280	2520	-241	-10%
Équateur	Bomongo	352	498	-146	-29%
Équateur	Ingende	3797	4004	-207	-5%
Équateur	Lukolela	292	419	-127	-30%
Équateur	Makanza	694	733	-39	-5%
Équateur	Mbandaka	1054	1061	-7	-1%
Haut-Katanga	Kambove	32669	36926	-4256	-12%
Haut-Katanga	Kasenga	27192	32269	-5077	-16%
Haut-Katanga	Kipushi	22453	24236	-1783	-7%
Haut-Katanga	Likasi	3821	3872	-50	-1%
Haut-Katanga	Lubumbashi	9006	9156	-150	-2%
Haut-Katanga	Mitwaba	13876	17513	-3637	-21%
Haut-Katanga	Pweto	36305	41285	-4980	-12%
Haut-Katanga	Sakania	18510	22049	-3538	-16%
Haut-Lomami	Bukama	15863	17590	-1727	-10%
Haut-Lomami	Kabongo	18009	19300	-1291	-7%
Haut-Lomami	Kamina	12250	15392	-3142	-20%
Haut-Lomami	Kaniama	10218	11273	-1054	-9%
Haut-Lomami	Malemba-Nkulu	28374	30062	-1687	-6%
Haut-Uele	Aba	129	141	-12	-8%
Haut-Uele	Dungu	457	647	-190	-29%
Haut-Uele	Faradje	5189	7066	-1877	-27%
Haut-Uele	Rungu	34	47	-13	-28%
Haut-Uele	Wamba	499	502	-3	-1%
Haut-Uele	Wamba (ville)	35	48	-13	-27%
Haut-Uele	Watsa	1019	1153	-134	-12%
Haut-Uele	Watsa (ville)	324	317	7	2%
Ituri	Aru	10731	12034	-1304	-11%
Ituri	Aru (ville)	220	239	-19	-8%
Ituri	Bunia	168	214	-46	-22%
Ituri	Djugu	75781	79786	-4005	-5%
Ituri	Irumu	3241	4200	-959	-23%
Ituri	Mahagi	47286	50245	-2959	-6%
Ituri	Mahagi (ville)	717	713	4	1%
Ituri	Mambasa	4046	4779	-733	-15%

Kasaï	Dekese	1459	1861	-402	-22%
Kasaï	Ilebo	20010	20561	-551	-3%
Kasaï	Kamonia	92397	93746	-1349	-1%
Kasaï	Luebo	2005	2038	-33	-2%
Kasaï	Mweka	24140	25362	-1222	-5%
Kasaï	Tshikapa	1400	1406	-6	0%
Kasaï-Central	Demba	7764	8084	-319	-4%
Kasaï-Central	Dibaya	71134	70919	215	0%
Kasaï-Central	Dimbelenge	29151	29472	-321	-1%
Kasaï-Central	Kananga	12875	12741	134	1%
Kasaï-Central	Kazumba	23536	24360	-824	-3%
Kasaï-Central	Luiza	15880	16676	-796	-5%
Kasaï-Oriental	Kabeya-Kamwanga	24289	24452	-162	-1%
Kasaï-Oriental	Katanda	8314	8367	-53	-1%
Kasaï-Oriental	Lukalaba	1537	1541	-4	0%
Kasaï-Oriental	Lupatapata	22931	23031	-101	0%
Kasaï-Oriental	Mbuji-Mayi	2306	2279	27	1%
Kasaï-Oriental	Miabi	13972	14036	-63	0%
Kasaï-Oriental	Tshilenge	31410	31728	-318	-1%
Kasaï-Oriental	Tshilenge (ville)	1978	2015	-37	-2%
Kinshasa	Kinshasa	24091	24480	-388	-2%
Kongo-Central	Boma	26	54	-28	-52%
Kongo-Central	Inkisi	759	758	1	0%
Kongo-Central	Kasangulu	539	1054	-515	-49%
Kongo-Central	Kimvula	1079	2100	-1021	-49%
Kongo-Central	Lukula	2082	2123	-41	-2%
Kongo-Central	Luozi	1554	3370	-1816	-54%
Kongo-Central	Madimba	10386	12056	-1669	-14%
Kongo-Central	Mbanza-Ngungu	18687	19981	-1293	-6%
Kongo-Central	Moanda	2519	3252	-733	-23%
Kongo-Central	Moanda (ville)	279	312	-34	-11%
Kongo-Central	Seke-Banza	313	681	-368	-54%
Kongo-Central	Songololo	2789	5071	-2282	-45%
Kongo-Central	Tshela	105	217	-112	-52%
Kwango	Feshi	22772	24768	-1996	-8%
Kwango	Kahemba	71394	73134	-1740	-2%
Kwango	Kasongo-Lunda	13719	14645	-926	-6%
Kwango	Kenge	10463	10733	-270	-3%
Kwango	Popokabaka	1381	1726	-345	-20%
Kwilu	Bagata	49872	50739	-868	-2%
Kwilu	Bandundu	2356	2328	28	1%
Kwilu	Bulungu	27749	28143	-394	-1%
Kwilu	Gungu	45291	47329	-2038	-4%
Kwilu	Idiofa	37173	38227	-1054	-3%
Kwilu	Kikwit	1427	1407	20	1%
Kwilu	Masi-Manimba	5705	5989	-284	-5%
Lomami	Kabinda	26878	28345	-1467	-5%
Lomami	Kabinda (ville)	1221	1202	19	2%
Lomami	Kamiji	5355	5532	-177	-3%
Lomami	Lubao	24742	27310	-2567	-9%
Lomami	Luilu	67905	68666	-761	-1%
Lomami	Mwene-Ditu	2391	2411	-19	-1%

Lomami	Ngandajika	56133	57179	-1046	-2%
Lomami	Ngandajika (ville)	1985	2026	-41	-2%
Lualaba	Dilolo	34188	38962	-4774	-12%
Lualaba	Kapanga	9633	11488	-1855	-16%
Lualaba	Lubudi	8765	10611	-1845	-17%
Lualaba	Mutshatsha	13630	16702	-3072	-18%
Lualaba	Sandoa	14907	18118	-3211	-18%
Mai-Ndombe	Bolobo	413	567	-154	-27%
Mai-Ndombe	Inongo	10725	10743	-19	0%
Mai-Ndombe	Inongo (ville)	26	48	-22	-46%
Mai-Ndombe	Kiri	4466	4728	-262	-6%
Mai-Ndombe	Kutu	4147	4333	-186	-4%
Mai-Ndombe	Kwamouth	1285	1733	-448	-26%
Mai-Ndombe	Mushie	414	486	-72	-15%
Mai-Ndombe	Oshwe	33575	34770	-1195	-3%
Mai-Ndombe	Yumbi	1010	1077	-67	-6%
Maniema	Kabambare	714	1144	-430	-38%
Maniema	Kailo	28469	29032	-562	-2%
Maniema	Kalima	57	74	-17	-23%
Maniema	Kasongo	1494	2756	-1262	-46%
Maniema	Kibombo	2680	3601	-921	-26%
Maniema	Kindu	1039	1017	22	2%
Maniema	Lubutu	2270	2399	-129	-5%
Maniema	Lubutu (ville)	814	798	16	2%
Maniema	Pangi	26434	26401	33	0%
Maniema	Punia	660	1050	-390	-37%
Mongala	Bongandanga	4440	4970	-530	-11%
Mongala	Bumba	53763	53249	514	1%
Mongala	Bumba (ville)	434	423	11	3%
Mongala	Lisala	34743	34638	105	0%
Nord-Kivu	Beni	170	264	-93	-35%
Nord-Kivu	Butembo	2401	2407	-5	0%
Nord-Kivu	Lubero	28635	29209	-574	-2%
Nord-Kivu	Masisi	23975	23597	378	2%
Nord-Kivu	Nyiragongo	1999	1996	3	0%
Nord-Kivu	Oicha	6229	7624	-1395	-18%
Nord-Kivu	Rutshuru	18381	18601	-220	-1%
Nord-Kivu	Walikale	1671	1830	-159	-9%
Nord-Ubangi	Bosobolo	14860	15727	-867	-6%
Nord-Ubangi	Businga	14615	15180	-565	-4%
Nord-Ubangi	Gbadolite	1546	1596	-50	-3%
Nord-Ubangi	Mobayi-Mbongo	1690	1985	-295	-15%
Nord-Ubangi	Yakoma	5172	5287	-116	-2%
Sankuru	Katako-Kombe	40379	40026	353	1%
Sankuru	Lomela	4745	4672	73	2%
Sankuru	Lubefu	10311	11017	-706	-6%
Sankuru	Lusambo	13682	13785	-103	-1%
Sud-Kivu	Bukavu	681	678	3	0%
Sud-Kivu	Fizi	890	1005	-115	-11%
Sud-Kivu	Idjwi	2873	2884	-11	0%
Sud-Kivu	Kabare	4948	5003	-55	-1%
Sud-Kivu	Kalehe	9299	9285	14	0%

Sud-Kivu	Mwenga	1514	1580	-66	-4%
Sud-Kivu	Shabunda	24	49	-25	-51%
Sud-Kivu	Uvira	3543	3642	-99	-3%
Sud-Kivu	Uvira (ville)	24	52	-28	-54%
Sud-Kivu	Walungu	6111	6100	11	0%
Sud-Ubangi	Budjala	39139	38914	224	1%
Sud-Ubangi	Gemena	48480	48358	122	0%
Sud-Ubangi	Kungu	26039	26293	-254	-1%
Sud-Ubangi	Libenge	6988	7581	-593	-8%
Tanganyika	Kabalo	12352	15214	-2862	-19%
Tanganyika	Kalemie	11885	14844	-2959	-20%
Tanganyika	Kalemie (ville)	1207	1230	-22	-2%
Tanganyika	Kongolo	23547	24731	-1184	-5%
Tanganyika	Kongolo (ville)	619	624	-4	-1%
Tanganyika	Manono	39375	45643	-6268	-14%
Tanganyika	Manono (ville)	1515	1560	-45	-3%
Tanganyika	Moba	38606	44321	-5715	-13%
Tanganyika	Nyunzu	12126	14887	-2761	-19%
Tshopo	Bafwasende	1101	1229	-128	-10%
Tshopo	Banalia	307	509	-202	-40%
Tshopo	Basoko	4383	4703	-321	-7%
Tshopo	Isangi	6040	6860	-820	-12%
Tshopo	Kisangani	3753	3839	-86	-2%
Tshopo	Opala	9465	10195	-730	-7%
Tshopo	Ubundu	4974	5823	-849	-15%
Tshopo	Yahuma	661	845	-184	-22%
Tshuapa	Befale	2772	3114	-341	-11%
Tshuapa	Boende	7515	7800	-285	-4%
Tshuapa	Bokungu	95	151	-55	-37%
Tshuapa	Djolu	61	95	-34	-36%
Tshuapa	Ikela	212	236	-24	-10%
Tshuapa	Monkoto	774	1111	-337	-30%
Total		2195722	2327560	-131823	-6%

MT (Metric tons): 1 MT is equivalent to 1,000 kilograms.

Change: refers to the relative difference and is calculated as (2024 prod – 2023 prod) divided by 2023 prod.

Suggested Citation: Ndoye, A., M. Dia, and K. Dia. 2024. AAgWa Crop Production Forecasts Brief Series: DRC – Maize. AAgWa Crop Production Forecasts Brief Series, No. 137. Kigali: AKADEMIYA2063.

<https://doi.org/10.54067/acpf.137>