

AAgWa Crop Production Forecasts Brief Series

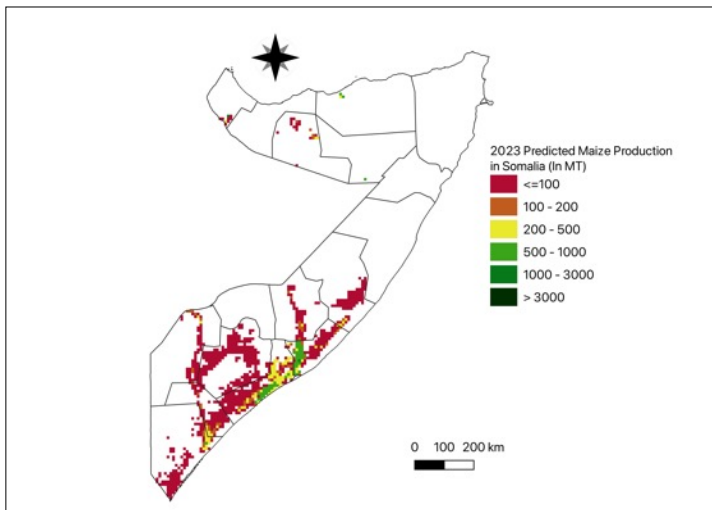
Somalia – Maize

Aissatou Ndoye*, Khadim Dia**, and Racine Ly***

No. 13, March 2023

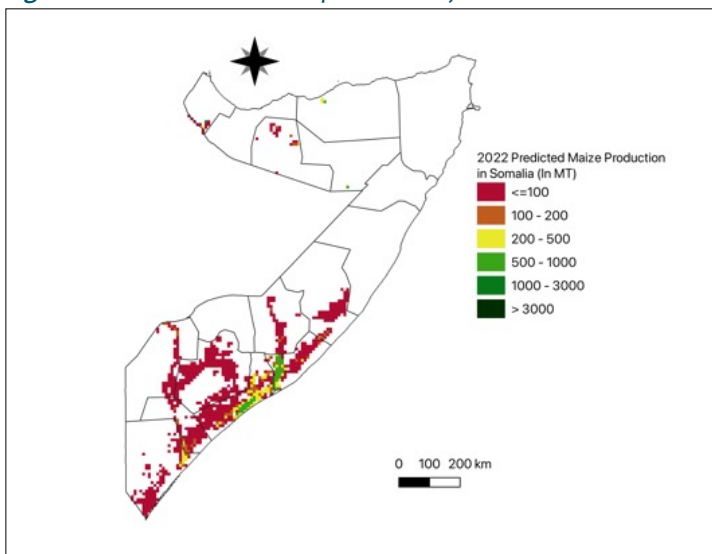
The crop production forecast brief series by AKADEMIYA2063's Africa Agriculture Watch (AAGWa) aims to provide more accurate and timely data on harvest and yields for nine major crops across nearly 50 African countries. The timeliness, wide availability, and easy access to this type of data will allow stakeholders across the value chain to better plan and execute policy and business actions more efficiently. The data published in the briefs are generated through the Africa Crop Production (AfCP) model, an Artificial Intelligence (AI-based) model applied to remotely sensed geobiophysical data to produce estimates at pixel as well as administrative levels as early as the beginning of every growing season. In Brief 13, we provide forecasts on Maize production in Somalia.

Figure 1. Somalia 2023 maize production forecast.



Data Source: Africa Agriculture Watch (www.aagwa.org).

Figure 2. Somalia 2022 maize production forecast.



Data Source: Africa Agriculture Watch (www.aagwa.org).

In 2023, maize production in Somalia is projected to reach 95,868 metric tons, which corresponds to a 4% increase over 2022 production levels. However, the highest maize production levels are expected in the South-Eastern regions, particularly in Balcad (Shabeellaha Dhexe), Jawhar (Shabeellaha Dhexe), Afgooye (Shabeellaha Hoose), Qoryooley (Shabeellaha Hoose), and Marka (Shabeellaha Hoose), with production volumes estimated at 13,596 MT, 13,516 MT, 8,540 MT, 8,407 MT and 5,435 MT respectively. On the other hand, lower production is projected to be lowest in the North and western regions such as Oodweyne (Togdheer), Diinsoor (Bay), Qansax Dheere (Bay), Sheekh (Togdheer), Boorama (Awdal), Baydhabo (Bay), and Garbahaaray (Gedo), with production levels reaching only 9, 77, 89, 212, 285, 287, and 296 metric tons, respectively.

The South-eastern part of the country, particularly Afgooye, Balcad, Jawhar, and Wanla Weyn, are expected to have the most significant increases of maize production volumes in 2023 compared to last year, with differences of respectively. 2,344 MT, 2,240 MT, 2,186 MT, and 1,431 MT. These correspond to relative changes of 38, 20, 19, and 37 percent, respectively.

The South-eastern part of the country, particularly Afgooye, Balcad, Jawhar, and Wanla Weyn, are expected to have the most significant increases of maize production volumes in 2023 compared to last year, with differences of respectively. 2,344 MT, 2,240 MT, 2,186 MT, and 1,431 MT. These correspond to relative changes of 38, 20, 19, and 37 percent, respectively.

*Associate Scientist, Department of Data Management, Digital Products, and Technology, AKADEMIYA2063

** Senior Associate Scientist, Department of Data Management, Digital Products, and Technology, AKADEMIYA2063

***Director, Department of Data Management, Digital Products, and Technology, AKADEMIYA2063



Annex – 2023 Somalia Maize Production Forecast at District level

Regions	Districts	2023 Prod (MT)	2022 Prod (MT)	Absolute Difference (MT)	Change (%)
Awdal	Baki	1521	1498	23	2%
Awdal	Boorama	285	289	-4	-1%
Bay	Baydhabo	287	2157	-1870	-87%
Bay	Buur Xakaba	583	2773	-2190	-79%
Bay	Diinsoor	77	998	-921	-92%
Bay	Qansax Dheere	89	929	-840	-90%
Galguduud	Ceel Buur	849	1635	-786	-48%
Galguduud	Ceel Dheer	1845	1898	-53	-3%
Gedo	Baar-Dheere	1167	1502	-335	-22%
Gedo	Dolow	549	463	87	19%
Gedo	Garbahaaray	296	601	-305	-51%
Gedo	Luuk	1063	925	138	15%
Hiiraan	Beled Weyn	700	733	-33	-5%
Hiiraan	Buulo Burdo	1462	1584	-123	-8%
Hiiraan	Jalalaqsi	506	611	-105	-17%
Jubbada Dhexe	Bu'aale	996	1173	-177	-15%
Jubbada Dhexe	Jilib	3407	3019	387	13%
Jubbada Dhexe	Saakow	676	780	-104	-13%
Jubbada Hoose	Afmadow	1525	1699	-174	-10%
Jubbada Hoose	Badhaadhe	353	1596	-1243	-78%
Jubbada Hoose	Jamaame	3504	2530	974	38%
Jubbada Hoose	Kismaayo	438	1107	-669	-60%
Sanaag	Ceel-Afwein	1630	1360	270	20%
Shabeellaha Dhexe	Aadan	1701	1369	333	24%
Shabeellaha Dhexe	Balcad	13596	11356	2240	20%
Shabeellaha Dhexe	Cadale	1758	1950	-193	-10%
Shabeellaha Dhexe	Jawhar	13516	11330	2186	19%
Shabeellaha Hoose	Afgooye	8540	6196	2344	38%
Shabeellaha Hoose	Baraawe	3057	2463	594	24%
Shabeellaha Hoose	Kuntuwaaray	5099	4300	799	19%
Shabeellaha Hoose	Marka	5435	4454	980	22%
Shabeellaha Hoose	Qoryooley	8407	7121	1286	18%
Shabeellaha Hoose	Sablale	3589	3826	-237	-6%
Shabeellaha Hoose	Wanla Weyn	5338	3907	1431	37%
Sool	Lascaanod	725	621	104	17%
Togdheer	Burao	1077	1025	52	5%
Togdheer	Oodweyne	9	36	-27	-74%
Togdheer	Sheekh	212	256	-44	-17%
Total		95868	92070	3798	4%

MT (Metric tons): 1 MT is equivalent to 1,000 kilograms

Change: refers to the relative difference and is calculated as (2023 prod – 2022 prod) divided by 2022 prod

Suggested Citation: Ndoye, A., K. Dia, and R. Ly. 2023. *AAgWa Crop Production Forecasts Brief Series: Somalia – Maize*. AAgWa Crop Production Forecasts Brief Series, No.13. Kigali, Rwanda: AKADEMIYA2063. <https://doi.org/10.54067/acpf.13>