

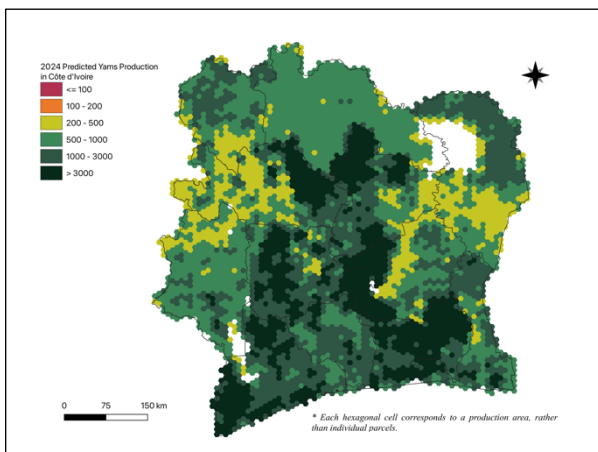
AAgWa Crop Production Forecasts Brief Series Côte d'Ivoire – Yam

Aïssatou Ndoye*, Mansour Dia**, and Khadim Dia***

No. 152, June 2024

The crop production forecast brief series by AKADEMIYA2063's Africa Agriculture Watch (AAGWa) aims to provide more accurate and timely data on harvest and yields for ten major crops across nearly 50 African countries. The timeliness, wide availability, and easy access to this type of data will allow

Figure 1. Côte d'Ivoire 2024 Yam Production Forecast.



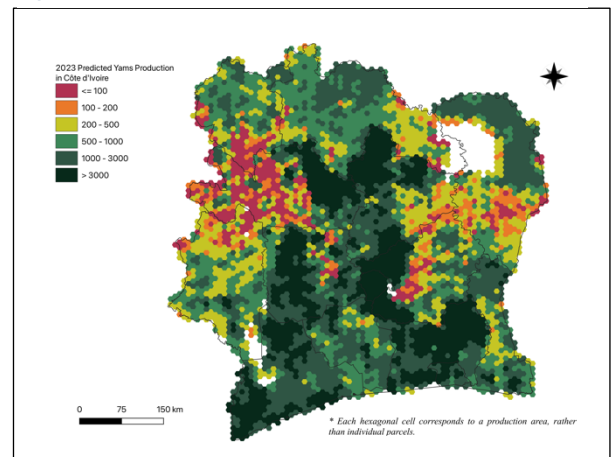
Data source: Africa Agriculture Watch (www.aagwa.org).

In 2024, yam production in Côte d'Ivoire is projected to reach 7,877,813 metric tons (MT), corresponding to a 5% increase over 2023 production levels. The highest yam producers are expected to be the Central and Southern regions such as Hambol (Vallée du Bandama), Béliér (Lacs), Haut-Sassandra (Sassandra-Marahoué), La Mé (Lagunes), and Béré (Woroba) with production levels estimated at 810,600 MT, 742,824 MT, 610,572 MT, 602,377 MT, and 539,516 MT respectively. In comparison, lower production values are observed in N'zi (Lacs), Guémon (Montagnes), Moronou (Lacs), Bafing (Woroba), Tonkpi (Montagnes), and Abidjan, with production of 41,745 MT, 59,497 MT, 65,482 MT, 66,549 MT, 76,133 MT, and 81,912 MT, respectively.

Moreover, the most significant yam production increases in 2024 are expected to occur in districts such as San-Pédro (Bas-Sassandra), Kabadougou (Denguélé), Agnéby-Tiassa (Lagunes), La Mé, and Gontougo (Zanzan), with differences of respectively, 52,247 MT, 41,662 MT, 40,671 MT, 37,772 MT, and 33,685 MT, respectively. These correspond to changes of 12%, 46%, 8%, 7%, and 40%.

stakeholders across the value chain to better plan and execute policy and business actions more efficiently. The data published in the briefs are generated through the Africa Crop Production (AfCP) model, an Artificial Intelligence (AI-based) model applied to remotely sensed geo-biophysical data to produce estimates at pixel as well as administrative levels as early as the beginning of every growing season. In Brief 152, we provide forecasts on yam production in Côte d'Ivoire.

Figure 2. Côte d'Ivoire 2023 Yam Production Forecast.



Data source: Africa Agriculture Watch (www.aagwa.org).

*Associate Scientist, Department of Data Management, Digital Products, and Technology, AKADEMIYA2063

**Associate Scientist, Department of Data Management, Digital Products, and Technology, AKADEMIYA2063

***Senior Associate Scientist, Department of Data Management, Digital Products, and Technology, AKADEMIYA2063



Annex – 2024 Côte d'Ivoire Yam Production Forecast at District Level

Districts	Regions	2024 Production (MT)	2023 Production (MT)	Difference (MT)	Change (%)
Abidjan	Abidjan	81912	66429	15482	23%
Bas-Sassandra	Gbôkle	162192	143467	18725	13%
Bas-Sassandra	Nawa	331296	329369	1927	1%
Bas-Sassandra	San-Pédro	483025	430778	52247	12%
Comoé	Indénié-				
	Djuablin	116760	113168	3592	3%
Comoé	Sud Comoé	123801	105900	17902	17%
Denguélé	Folon	85229	73062	12167	17%
Denguélé	Kabadougou	132059	90396	41662	46%
Gôh-Djiboua	Gôh	152677	144496	8180	6%
Gôh-Djiboua	Lôh-Djiboua	146786	122467	24319	20%
Lacs	Béliér	742824	728652	14171	2%
Lacs	Iffou	91263	74737	16527	22%
Lacs	Moronou	65482	52364	13119	25%
Lacs	N'zi	41745	26548	15196	57%
Lagunes	Agnéby-Tiassa	531117	490447	40671	8%
Lagunes	Grands Ponts	172554	149748	22806	15%
Lagunes	La Mé	602377	564604	37772	7%
Montagnes	Cavally	112499	106603	5897	6%
Montagnes	Guémon	59497	48099	11397	24%
Montagnes	Tonkpi	76133	50838	25296	50%
Sassandra-	Haut-				
Marahoué	Sassandra	610572	631630	-21058	-3%
Sassandra-	Marahoué				
Marahoué	Marahoué	218944	204486	14459	7%
Savanes	Bagoué	91871	84549	7322	9%
Savanes	Poro	136914	145677	-8763	-6%
Savanes	Tchologo	121692	109655	12037	11%
Vallée du					
Bandama	Gbeke	196123	198111	-1988	-1%
Vallée du					
Bandama	Hambol	810600	866209	-55610	-6%
Woroba	Bafing	66549	33613	32936	98%
Woroba	Béré	539516	594570	-55054	-9%
Woroba	Worodougou	107194	77197	29997	39%
Yamoussoukro	Yamoussoukro	325512	318440	7072	2%
Zanzan	Bounkani	222971	234451	-11481	-5%
Zanzan	Gontougo	118127	84442	33685	40%
Total		7877813	7495202	382609	5%

MT (Metric tons): 1 MT is equivalent to 1,000 kilograms.

Change: refers to the relative difference and is calculated as (2024 prod – 2023 prod) divided by 2023 prod.

Suggested Citation: Ndoye, A., M. Dia, and K. Dia. 2024. AAgWa Crop Production Forecasts Brief Series: Côte d'Ivoire – Yam. AAgWa Crop Production Forecasts Brief Series, No. 152. Kigali: AKADEMIYA2063.

<https://doi.org/10.54067/acpf.152>

