

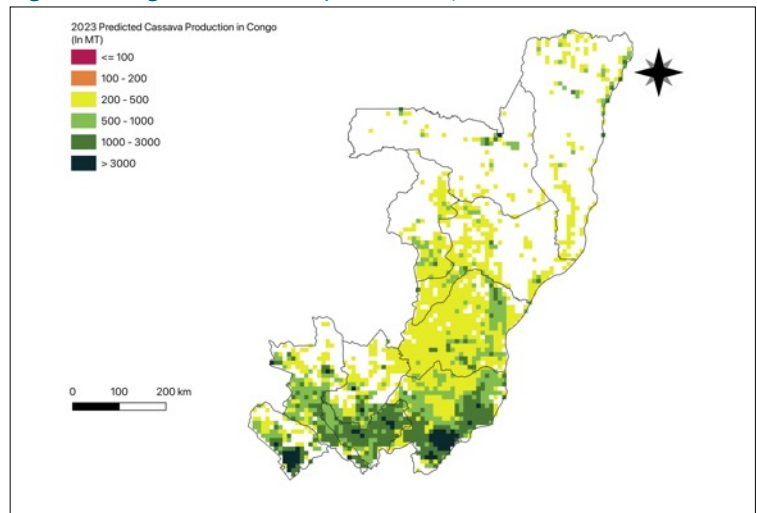
# AAGWa Crop Production Forecasts Brief Series Congo – Cassava

Aissatou Ndoye\*, Khadim Dia\*\*, and Ousmane Badiane\*\*\*

No. 15, March 2023

The crop production forecast brief series by AKADEMIYA2063's Africa Agriculture Watch (AAGWa) aims to provide more accurate and timely data on harvest and yields for nine major crops across nearly 50 African countries. The timeliness, wide availability, and easy access to this type of data will allow stakeholders across the value chain to better plan and execute policy and business actions more efficiently. The data published in the briefs are generated through the Africa Crop Production (AfCP) model, an Artificial Intelligence (AI-based) model applied to remotely sensed geo-biophysical data to produce estimates at pixel as well as administrative levels as early as the beginning of every growing season. In Brief 15, we provide forecasts on Cassava production in Congo.

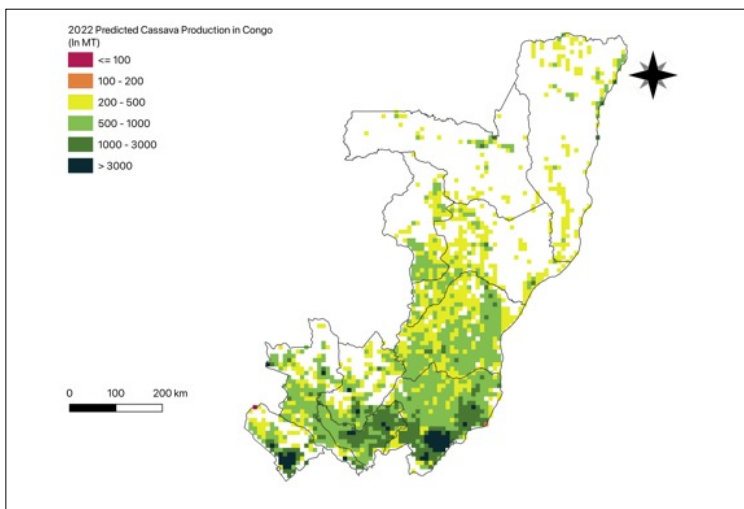
Figure 1. Congo 2023 cassava production forecast.



Data Source: Africa Agriculture Watch ([www.aagwa.org](http://www.aagwa.org)).

In 2023, cassava production in Congo is projected to reach 1,451,755 metric tons, corresponding to a 3% increase over 2022 production levels. However, the highest cassava production levels are expected in the Southern provinces, particularly in Ngamaba (Pool), Mouyondzi (Bouenza), Kinkala (Pool), Djambala (Plateaux), and Loandjili (Kouilou), with production values estimated at 124,599 MT, 100,384 MT, 85,177 MT, 85,060 MT, and 84,474 MT respectively.

Figure 2. Congo 2022 cassava production forecast.



Data Source: Africa Agriculture Watch ([www.aagwa.org](http://www.aagwa.org)).

In contrast, lower production values are observed in the North and central districts such as Sembé (Sangha), Mayoko (Niari), Brazzaville, Souanké (Sangha), and Bambama (Lékoumou), with production levels 1,845, 1,888, 2,357, 3,353, and 3,721 metric tons respectively.

The Southern part of the country, particularly in Mouyondzi, Louvakou (Loubomo), Loudima (Bouenza), and Kibangou (Niari), are expected to have the most significant increases of cassava production volumes in 2023 with differences of, respectively, 13,433 MT, 11,232 MT, 10,727 MT, and 9,431 MT compared to 2022. This corresponds to changes of 15, 42, 41, and 40 percent, respectively.

\*Associate Scientist, Department of Data Management, Digital Products, and Technology, AKADEMIYA2063


\*\* Senior Associate Scientist, Department of Data Management, Digital Products, and Technology, AKADEMIYA2063

\*\*\*Executive Chairperson, AKADEMIYA2063



## Annex – 2023 Congo Cassava Production Forecast at District level

Provinces	Districts	2023 Production (MT)	2022 Production (MT)	Difference (MT)	Change (%)
Bouenza	Boko-Songho	18939	15214	3725	24%
Bouenza	Loudima	36959	26232	10727	41%
Bouenza	Madingou	15260	12646	2614	21%
Bouenza	Mfouati	7679	7169	510	7%
Bouenza	Mouyondzi	100384	86951	13433	15%
Bouenza	Nkayi District	34729	30910	3819	12%
Brazzaville	Brazzaville	2357	2140	217	10%
Cuvette	Boundji	12148	13238	-1090	-8%
Cuvette	Loukoléla	3972	4249	-277	-7%
Cuvette	Makoua	13924	15856	-1932	-12%
Cuvette	Mossaka	10683	10663	19	0%
Cuvette	Okoyo	17413	23272	-5859	-25%
Cuvette	Owando	19554	21735	-2180	-10%
Cuvette-Ouest	Ewo	23602	29413	-5811	-20%
Cuvette-Ouest	Kéllé	9141	9315	-174	-2%
Cuvette-Ouest	Mbomo	13407	15234	-1827	-12%
Kouilou	Kakamoeka	14053	11712	2341	20%
Kouilou	Loandjili	84474	80957	3517	4%
Kouilou	Madingo-Kayes	22250	16624	5626	34%
Kouilou	Mvouti	30267	26452	3815	14%
Lékoumou	Bambama	3721	4705	-984	-21%
Lékoumou	Komono	11278	13048	-1770	-14%
Lékoumou	Sibiti	59893	52925	6968	13%
Lékoumou	Zanaga	11828	17534	-5706	-33%
Likouala	Dongou	36002	33320	2681	8%
Likouala	Epéna	15229	16953	-1724	-10%
Likouala	Impfondo	5224	5016	208	4%
Niari	Divénié	20933	21706	-773	-4%
Niari	Kibangou	32753	23322	9431	40%
Niari	Kimongo	20952	18088	2865	16%
Niari	Louvakou (Loubomo)	38048	26816	11231	42%
Niari	Mayoko	1888	3079	-1192	-39%
Niari	Mossendjo	32373	30716	1657	5%
Plateaux	Abala	32901	36386	-3485	-10%
Plateaux	Djambala	85060	103826	-18766	-18%
Plateaux	Gamboma	50944	52810	-1866	-4%
Plateaux	Lékana	12566	22019	-9453	-43%
Pool	Boko	39486	36519	2967	8%
Pool	Kindamba	52129	53237	-1108	-2%
Pool	Kinkala	85177	83638	1539	2%



Pool	Mayama	48280	55798	-7518	-13%
Pool	Mindouli	45629	41587	4042	10%
Pool	Ngabé	63631	56832	6798	12%
Pool	Ngamaba	124599	116742	7857	7%
Sangha	Ouessou	24837	23577	1261	5%
Sangha	Sembé	1845	1836	9	1%
Sangha	Souanké	3353	2574	779	30%
Total		1451755	1414589	37166	3%

MT (Metric tons): 1 MT is equivalent to 1,000 kilograms

Change: refers to the relative difference and is calculated as (2023 production – 2022 production) divided by 2022 production

**Suggested Citation:** Ndoye, A., K. Dia, and O. Badiane. 2023. AAgWa Crop Production Forecasts Brief Series: Congo – Cassava. AAgWa Crop Production Forecasts Brief Series, No. 15. Kigali, Rwanda: AKADEMIYA2063. <https://doi.org/10.54067/acpf.15>