

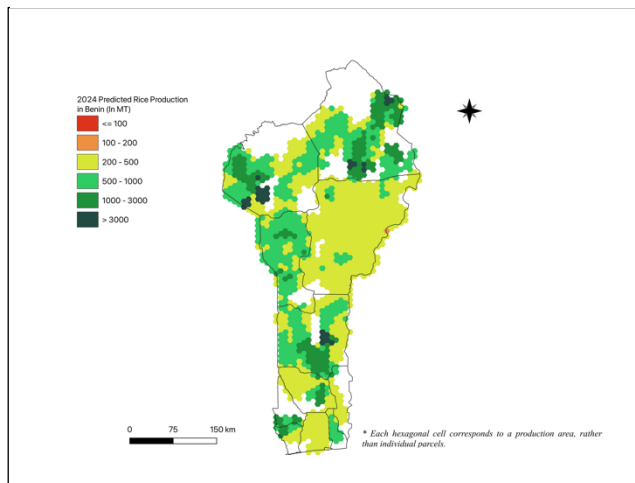
# AAGWa Crop Production Forecasts Brief Series Benin – Rice

Aïssatou Ndoye\*, Mansour Dia\*\*, and Khadim Dia\*\*\*

No. 167, July 2024

The crop production forecast brief series by AKADEMIYA2063's Africa Agriculture Watch (AAGWa) aims to provide more accurate and timely data on harvest and yields for ten major crops across nearly 50 African countries. The timeliness, wide availability, and easy access to this type of data will allow stakeholders across the value chain to better plan and execute policy and business

Figure 1. Benin 2024 Rice Production Forecast.



Data source: Africa Agriculture Watch ([www.aagwa.org](http://www.aagwa.org)).

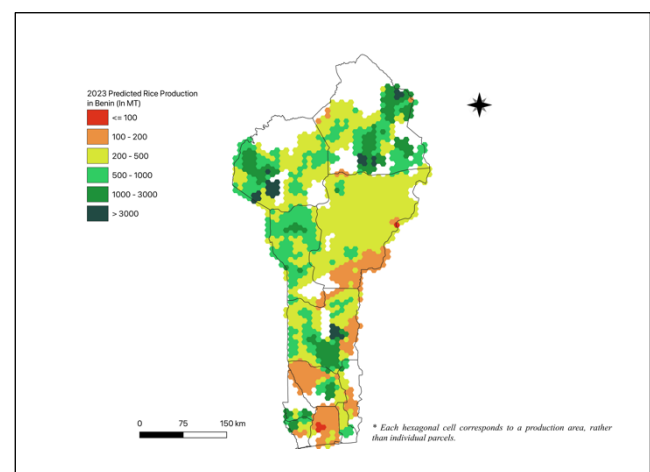
departments of Malanville (Alibori), Savè (Collines), Djougou Rural (Donga), Kandi (Alibori), and Bassila (Donga) are expected to produce the most significant volumes of rice, with production levels estimated at 49,339 MT, 44,876 MT, 30,971 MT, 29,381 MT, and 26,063 MT respectively. In comparison, lower production values are observed in areas such as Ouidah (Atlantique), Tori-Bossito (Atlantique), Glazoué (Collines), Akpro-Missérété (Ouémé), Dangbo (Ouémé), and Péhunco (Atakora), with production of, respectively, 219 MT, 227 MT, 481 MT, 631 MT, 658 MT, and 731 MT.

Compared to 2023, the most significant rice production increases in 2024 are expected to occur in Tchaourou (Borgou), Banikoara (Alibori), Ouèssè (Collines), Bantè (Collines), and Djidja (Zou), with differences of 7,065 MT, 3,681 MT, 3,622 MT, 3,360 MT, and 3,068 MT, respectively. These correspond to changes of 54%, 19%, 34%, 29%, and 78%.

actions more efficiently. The data published in the briefs are generated through the Africa Crop Production (AfCP) model, an Artificial Intelligence (AI-based) model applied to remotely sensed geobiophysical data to produce estimates at pixel as well as administrative levels as early as the beginning of every growing season. In Brief 167, we provide forecasts on rice production in Benin.

In 2024, rice production in Benin is projected to reach 586,678 metric tons (MT), indicating a 10% increase over 2023 production levels. The

Figure 2. Benin 2023 Rice Production Forecast.



Data source: Africa Agriculture Watch ([www.aagwa.org](http://www.aagwa.org)).

\*Associate Scientist, Department of Data Management, Digital Products, and Technology, AKADEMIYA2063

\*\*Associate Scientist, Department of Data Management, Digital Products, and Technology, AKADEMIYA2063

\*\*\*Senior Associate Scientist, Department of Data Management, Digital Products, and Technology, AKADEMIYA2063

## Annex – 2024 Benin Rice Production Forecast at District Level

Departments	Communes	2024 Production (MT)	2023 Production (MT)	Difference (MT)	Change (%)
Alibori	Banikoara	22866	19185	3681	19%
Alibori	Gogounou	24123	24704	-580	-2%
Alibori	Kandi	29381	27219	2161	8%
Alibori	Karimama	1510	1195	315	26%
Alibori	Malanville	49339	48712	627	1%
Alibori	Ségbana	11058	10582	476	4%
Atakora	Boukoubé	20595	21009	-414	-2%
Atakora	Cobly	4812	4232	580	14%
Atakora	Kérou	16423	14741	1681	11%
Atakora	Kouandé	16808	15948	860	5%
Atakora	Matéri	24400	24133	267	1%
Atakora	Natitingou	24268	25281	-1013	-4%
Atakora	Péhunco	731	648	83	13%
Atakora	Tanguiéta	18939	18881	58	0%
Atakora	Toucountouna	1014	992	22	2%
Atlantique	Abomey-Calavi	1896	1201	694	58%
Atlantique	Allada	1074	505	569	113%
Atlantique	Ouidah	219	106	113	106%
Atlantique	Toffo	938	465	473	102%
Atlantique	Tori-Bossito	227	107	120	112%
Atlantique	Zè	2230	1292	938	73%
Borgou	Bembèrèkè	13064	10354	2709	26%
Borgou	Kalalé	9781	7910	1870	24%
Borgou	N'Dali	11238	8626	2613	30%
Borgou	Nikki	11806	9016	2790	31%
Borgou	Parakou	5307	4583	724	16%
Borgou	Pèrèrè	7828	5667	2161	38%
Borgou	Sinendé	6320	5641	679	12%
Borgou	Tchaourou	20071	13006	7065	54%
Collines	Bantè	15033	11673	3360	29%
Collines	Dassa-Zoumè	25347	23727	1620	7%
Collines	Glazoué	481	351	130	37%
Collines	Ouèssè	14401	10779	3622	34%
Collines	Savalou	19787	16859	2929	17%
Collines	Savè	44876	46003	-1126	-2%
Donga	Bassila	26063	23291	2772	12%
Donga	Copargo	6403	6132	271	4%
Donga	Djougou Rural	30971	29257	1714	6%
Donga	Djougou Urbain	3561	3604	-42	-1%
Donga	Ouaké	4853	4584	269	6%
Kouffo	Djakotomey	2437	2398	39	2%
Kouffo	Dogbo	3577	3327	251	8%
Mono	Bopa	2288	1795	493	27%
Mono	Houéyogbé	1051	745	306	41%
Mono	Lokossa	2607	2397	210	9%
Ouémé	Adjohoun	2195	1773	422	24%
Ouémé	Akpro-Missérété	631	530	101	19%
Ouémé	Dangbo	658	543	115	21%
Plateau	Adja-Ouèrè	1167	708	459	65%



Plateau	Kétou	1143	946	197	21%
Zou	Bohicon	803	708	94	13%
Zou	Covè	4922	4665	257	6%
Zou	Djidja	7023	3954	3068	78%
Zou	Ouinhi	1255	931	324	35%
Zou	Za-Kpota	2391	2115	275	13%
Zou	Zagnanado	2488	1981	507	26%
<b>Total</b>		<b>586678</b>	<b>531717</b>	<b>54959</b>	<b>10%</b>

**MT (Metric tons):** 1 MT is equivalent to 1,000 kilograms.

**Change:** refers to the relative difference and is calculated as (2024 prod – 2023 prod) divided by 2023 prod.

**Suggested Citation:** Ndoye, A., M. Dia, and K. Dia. 2024. AAgWa Crop Production Forecasts Brief Series: Benin – Rice. AAgWa Crop Production Forecasts Brief Series, No. 167. Kigali: AKADEMIYA2063.

<https://doi.org/10.54067/acpf.167>