

AAGWa Crop Production Forecasts Brief Series

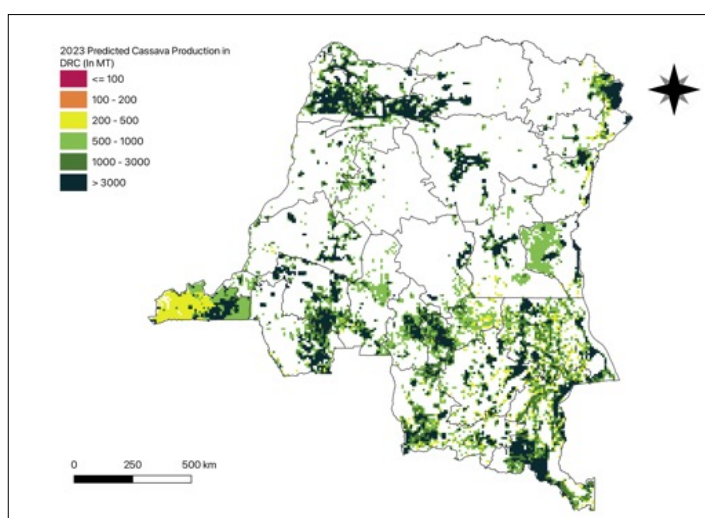
Democratic Republic of the Congo – Cassava

Aissatou Ndoye*, Khadim Dia**, and Ousmane Badiane***

No. 16, March 2023

The crop production forecast brief series by AKADEMIYA2063's Africa Agriculture Watch (AAGWa) aims to provide more accurate and timely data on harvest and yields for nine major crops across nearly 50 African countries. The timeliness, wide availability, and easy access to this type of data will allow stakeholders across the value chain to better plan and execute policy and business actions more efficiently. The data published in the briefs are generated through the Africa Crop Production (AfCP) model, an Artificial Intelligence (AI-based) model applied to remotely sensed geo-biophysical data to produce estimates at pixel as well as administrative levels as early as the beginning of every growing season. In Brief 16, we provide forecasts on Cassava production in the Democratic Republic of the Congo

Figure 1. DRC 2023 cassava production forecast.

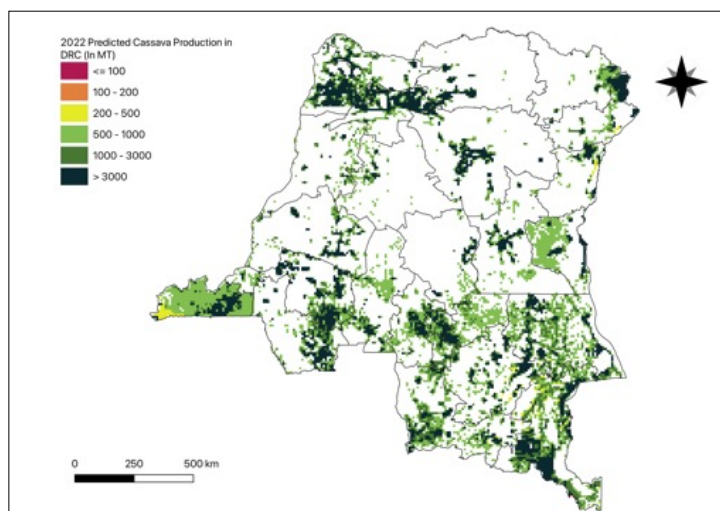


Data Source: Africa Agriculture Watch (www.aagwa.org).

In 2023, cassava production in DRC is projected to reach 33,546,763 metric tons, corresponding to a slight increase of 1% over 2022 production levels. However, the highest cassava production levels of

around one million metric tons or more are expected to occur in the western and northern provinces, particularly in Kahemba (Kwango), Mbanza-Ngungu (Kongo-Central), Bagata (Kwilu), Madimba (Kongo-Central), and Bumba (Mongala), with production volumes estimated at 1,742,841 MT, 1,282,225 MT, 1,041,639 MT, 994,916 MT, and 967,755 MT respectively. On the other hand, lower production levels are observed in the Southern districts and western part of the country, such as Inongo (Mai-Ndombe), Poko (Bas-Uele), Rungu (Haut-Uele), and Wamba (Haut-Uele) with production levels 540, 570, 618, and 663 metric tons respectively.

Figure 2. DRC 2022 cassava production forecast.



Data Source: Africa Agriculture Watch (www.aagwa.org).

However, the most significant increases in cassava production volumes in 2023 are expected to occur in Pweto (Haut-Katanga), Manono (Tanganyika), Kambove (Haut-Katanga), Bumba (Mongala), and Mitwaba (Haut-Katanga) with differences of 31,300 MT, 30,448 MT, 27,076 MT, 24,136 MT, and 22,563 MT, corresponding to relative changes of 7, 6, 5, 3, and 14 percent.

*Associate Scientist, Department of Data Management, Digital Products, and Technology, AKADEMIYA2063


** Senior Associate Scientist, Department of Data Management, Digital Products, and Technology, AKADEMIYA2063

***Executive Chairperson, AKADEMIYA2063



Annex – 2023 DRC Cassava Production Forecast at District level


Provinces	Districts	2023 Production (MT)	2022 Production (MT)	Difference (MT)	Change (%)
Bas-Uele	Aketi	609718	610144	-426	0%
Bas-Uele	Aketi (ville)	80461	83902	-3441	-4%
Bas-Uele	Bambesa	1667	1825	-158	-9%
Bas-Uele	Bondo	81104	77693	3411	4%
Bas-Uele	Buta	265515	267039	-1524	-1%
Bas-Uele	Poko	570	602	-32	-5%
Équateur	Basankusu	65473	59912	5561	9%
Équateur	Basankusu (ville)	6395	6332	63	1%
Équateur	Bikoro	5854	5889	-35	-1%
Équateur	Bolomba	31709	28963	2746	9%
Équateur	Bomongo	4945	5117	-172	-3%
Équateur	Ingende	58103	53016	5087	10%
Équateur	Lukolela	4724	4966	-242	-5%
Équateur	Makanza	9524	8879	644	7%
Équateur	Mbandaka	19615	18979	636	3%
Haut-Katanga	Kambove	527705	500629	27076	5%
Haut-Katanga	Kasenga	350597	331747	18850	6%
Haut-Katanga	Kipushi	384564	370123	14442	4%
Haut-Katanga	Likasi	56655	55106	1549	3%
Haut-Katanga	Lubumbashi	144726	142569	2157	2%
Haut-Katanga	Mitwaba	183214	160652	22563	14%
Haut-Katanga	Pweto	474935	443635	31300	7%
Haut-Katanga	Sakania	278986	265235	13751	5%
Haut-Lomami	Bukama	203405	190374	13031	7%
Haut-Lomami	Kabongo	283927	274422	9505	3%
Haut-Lomami	Kamina	211760	208355	3405	2%
Haut-Lomami	Kaniama	103048	101141	1906	2%
Haut-Lomami	Malemba-Nkulu	376891	359073	17818	5%
Haut-Uele	Aba	5003	4799	203	4%
Haut-Uele	Dungu	19143	19164	-21	0%
Haut-Uele	Faradje	202940	200835	2105	1%
Haut-Uele	Rungu	618	618	0	0%
Haut-Uele	Wamba	23116	22824	292	1%
Haut-Uele	Wamba (ville)	662	657	5	1%
Haut-Uele	Watsa	44969	44715	254	1%
Haut-Uele	Watsa (ville)	19425	19815	-389	-2%
Ituri	Aru	566776	551733	15043	3%
Ituri	Aru (ville)	13131	12701	430	3%
Ituri	Bunia	5086	4435	651	15%
Ituri	Djugu	50062	48782	1280	3%



Provinces	Districts	2023 Production (MT)	2022 Production (MT)	Difference (MT)	Change (%)
Ituri	Irumu	26130	27108	-978	-4%
Ituri	Mahagi	282135	277682	4453	2%
Ituri	Mambasa	196324	192926	3399	2%
Kasaï	Dekese	13320	13896	-576	-4%
Kasaï	Ilebo	116554	115675	879	1%
Kasaï	Kamonia	779199	788991	-9792	-1%
Kasaï	Luebo	18429	18354	76	0%
Kasaï	Mweka	123136	126033	-2897	-2%
Kasaï	Tshikapa	31298	32131	-833	-3%
Kasaï-Central	Demba	78587	79834	-1247	-2%
Kasaï-Central	Dibaya	548579	548448	131	0%
Kasaï-Central	Dimbelenge	159368	157937	1430	1%
Kasaï-Central	Kananga	194644	198656	-4012	-2%
Kasaï-Central	Kazumba	74630	74230	400	1%
Kasaï-Central	Luiza	79451	81196	-1745	-2%
Kasaï-Oriental	Kabeya-Kamwanga	238731	241693	-2962	-1%
Kasaï-Oriental	Katanda	26582	25547	1035	4%
Kasaï-Oriental	Lukalaba	20563	20649	-86	0%
Kasaï-Oriental	Lupatapata	159475	156518	2957	2%
Kasaï-Oriental	Mbuji-Mayi	7855	7378	477	6%
Kasaï-Oriental	Miabi	32862	31859	1003	3%
Kasaï-Oriental	Tshilenge	317574	320178	-2604	-1%
Kasaï-Oriental	Tshilenge (ville)	21012	21113	-101	0%
Kinshasa	Kinshasa	50780	50476	304	1%
Kongo-Central	Boma	732	855	-124	-14%
Kongo-Central	Inkisi	47032	49439	-2407	-5%
Kongo-Central	Kasangulu	46762	46210	552	1%
Kongo-Central	Kimvula	29759	30591	-832	-3%
Kongo-Central	Lukula	73491	77803	-4312	-6%
Kongo-Central	Luozi	55970	61726	-5756	-9%
Kongo-Central	Madimba	994916	1024738	-29822	-3%
Kongo-Central	Mbanza-Ngungu	1282225	1332092	-49867	-4%
Kongo-Central	Moanda	117076	122602	-5527	-5%
Kongo-Central	Moanda (ville)	26078	26169	-91	0%
Kongo-Central	Seke-Banza	19575	24109	-4535	-19%
Kongo-Central	Songololo	197385	203980	-6595	-3%
Kongo-Central	Tshela	13984	16714	-2730	-16%
Kwango	Feshi	412026	395339	16687	4%
Kwango	Kahemba	1742841	1786417	-43575	-2%
Kwango	Kasongo-Lunda	288983	289252	-269	0%

Provinces	Districts	2023 Production (MT)	2022 Production (MT)	Difference (MT)	Change (%)
Kwango	Kenge	243997	247440	-3443	-1%
Kwango	Popokabaka	24063	23744	319	1%
Kwilu	Bagata	1041639	1067139	-25500	-2%
Kwilu	Bandundu	56041	56547	-506	-1%
Kwilu	Bulungu	651203	668780	-17577	-3%
Kwilu	Gungu	746486	729624	16862	2%
Kwilu	Idiofa	713869	714319	-450	0%
Kwilu	Kikwit	38772	40344	-1572	-4%
Kwilu	Masi-Manimba	115133	116536	-1403	-1%
Lomami	Kabinda	88484	90591	-2107	-2%
Lomami	Kabinda (ville)	6028	5679	349	6%
Lomami	Kamiji	11240	11422	-183	-2%
Lomami	Lubao	87180	93958	-6778	-7%
Lomami	Luilu	312899	309473	3425	1%
Lomami	Mwene-Ditu	5728	5461	266	5%
Lomami	Ngandajika	369178	367292	1886	1%
Lomami	Ngandajika (ville)	19033	18966	66	0%
Lualaba	Dilolo	499114	478781	20333	4%
Lualaba	Kapanga	160773	156974	3798	2%
Lualaba	Lubudi	130062	122976	7086	6%
Lualaba	Mutshatsha	194855	191269	3585	2%
Lualaba	Sandoa	277465	268234	9231	3%
Mai-Ndombe	Bolobo	5510	5505	5	0%
Mai-Ndombe	Inongo	247499	249821	-2322	-1%
Mai-Ndombe	Inongo (ville)	540	605	-65	-11%
Mai-Ndombe	Kiri	72649	69177	3472	5%
Mai-Ndombe	Kutu	87866	88989	-1123	-1%
Mai-Ndombe	Kwamouth	24430	24372	59	0%
Mai-Ndombe	Mushie	6579	6318	261	4%
Mai-Ndombe	Oshwe	822820	824294	-1474	0%
Mai-Ndombe	Yumbi	14022	13284	738	6%
Maniema	Kabambare	10369	11210	-841	-8%
Maniema	Kailo	533580	538297	-4718	-1%
Maniema	Kalima	841	764	77	10%
Maniema	Kasongo	20221	22450	-2228	-10%
Maniema	Kibombo	34372	35624	-1252	-4%
Maniema	Kindu	13761	13601	160	1%
Maniema	Lubutu	30956	29256	1701	6%
Maniema	Lubutu (ville)	11733	11778	-45	0%
Maniema	Pangi	406057	407621	-1563	0%
Maniema	Punia	9596	8298	1298	16%

Provinces	Districts	2023 Production (MT)	2022 Production (MT)	Difference (MT)	Change (%)
Mongala	Bongandanga	56772	53967	2805	5%
Mongala	Bumba	967755	943619	24136	3%
Mongala	Bumba (ville)	7698	7466	232	3%
Mongala	Lisala	506697	490017	16679	3%
Nord-Kivu	Beni	42136	41188	949	2%
Nord-Kivu	Lubero	99075	99262	-187	0%
Nord-Kivu	Oicha	493796	497100	-3304	-1%
Nord-Kivu	Rutshuru	111885	109609	2276	2%
Nord-Kivu	Walikale	22091	20681	1410	7%
Nord-Ubangi	Bosobolo	213735	206791	6944	3%
Nord-Ubangi	Businga	196361	189818	6543	3%
Nord-Ubangi	Gbadolite	15843	15095	748	5%
Nord-Ubangi	Mobayi-Mbongo	21371	20646	725	4%
Nord-Ubangi	Yakoma	73688	70538	3150	4%
Sankuru	Katako-Kombe	622415	633837	-11422	-2%
Sankuru	Lomela	13815	13147	668	5%
Sankuru	Lubefu	50451	52140	-1689	-3%
Sankuru	Lusambo	214407	219913	-5506	-3%
Sud-Kivu	Fizi	203376	200164	3212	2%
Sud-Kivu	Idjwi	29898	27488	2410	9%
Sud-Kivu	Kabare	4976	4821	155	3%
Sud-Kivu	Kalehe	49439	49066	374	1%
Sud-Kivu	Mwenga	481113	494179	-13065	-3%
Sud-Kivu	Shabunda	200304	179506	20798	12%
Sud-Kivu	Uvira	300179	302993	-2814	-1%
Sud-Kivu	Uvira (ville)	12094	11597	497	4%
Sud-Kivu	Walungu	80499	80941	-442	-1%
Sud-Ubangi	Budjala	579759	563284	16475	3%
Sud-Ubangi	Gemena	668812	655563	13248	2%
Sud-Ubangi	Kungu	376547	368068	8480	2%
Sud-Ubangi	Libenge	92820	91090	1730	2%
Tanganyika	Kabalo	196707	193141	3566	2%
Tanganyika	Kalemie	163276	160430	2846	2%
Tanganyika	Kalemie (ville)	16993	16074	919	6%
Tanganyika	Kongolo	357515	347438	10077	3%
Tanganyika	Kongolo (ville)	12988	12549	439	3%
Tanganyika	Manono	566467	536019	30448	6%
Tanganyika	Manono (ville)	27632	26108	1524	6%
Tanganyika	Moba	373866	354793	19073	5%
Tanganyika	Nyunzu	182985	179452	3533	2%
Tshopo	Bafwasende	84916	87239	-2323	-3%



Provinces	Districts	2023 Production (MT)	2022 Production (MT)	Difference (MT)	Change (%)
Tshopo	Banalia	6549	6981	-432	-6%
Tshopo	Basoko	170473	169206	1267	1%
Tshopo	Isangi	301998	296081	5917	2%
Tshopo	Kisangani	227980	227924	56	0%
Tshopo	Opala	652135	653855	-1720	0%
Tshopo	Ubundu	319848	322265	-2417	-1%
Tshopo	Yahuma	24133	23608	526	2%
Tshuapa	Befale	43803	40951	2852	7%
Tshuapa	Boende	117259	110545	6714	6%
Tshuapa	Bokungu	1872	1835	37	2%
Tshuapa	Djolu	1192	1193	-1	0%
Tshuapa	Ikela	3064	2756	308	11%
Tshuapa	Monkoto	13885	13604	281	2%
Total		33546763	33308390	238373	1%

MT (Metric tons): 1 MT is equivalent to 1,000 kilograms

Change: refers to the relative difference and is calculated as (2023 production – 2022 production) divided by 2022 production

Suggested Citation: Ndoye, A., K. Dia, and O. Badiane. 2023. AAgWa Crop Production Forecasts Brief Series: Democratic Republic of the Congo – Cassava. AAgWa Crop Production Forecasts Brief Series, No. 16. Kigali, Rwanda: AKADEMIYA2063. <https://doi.org/10.54067/acpf.16>