

# AAGWa Crop Production Forecasts Brief Series

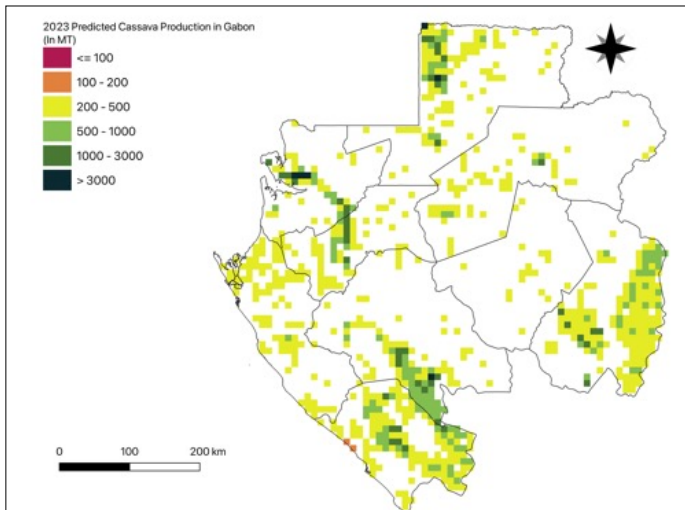
## Gabon – Cassava

Aissatou Ndoye\*, Khadim Dia\*\*, and Ousmane Badiane\*\*\*

No. 17, March

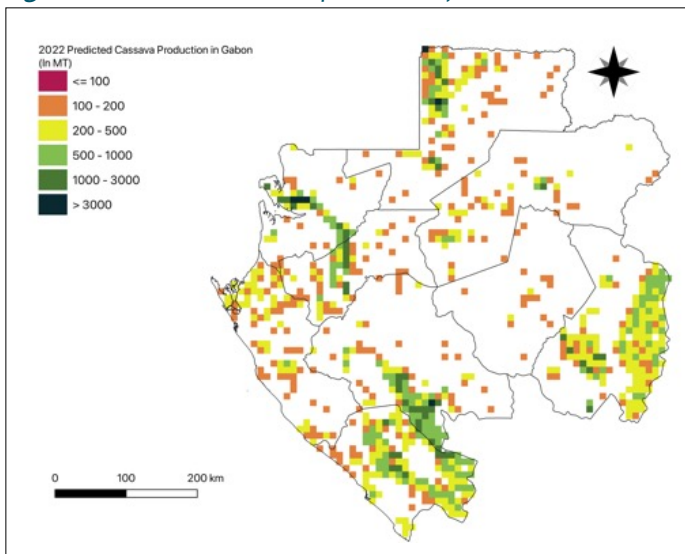
The crop production forecast brief series by AKADEMIYA2063's Africa Agriculture Watch (AAGWa) aims to provide more accurate and timely data on harvest and yields for nine major crops across nearly 50 African countries. The timeliness,

**Figure 1.** Gabon 2023 cassava production forecast.



Data Source: Africa Agriculture Watch ([www.aagwa.org](http://www.aagwa.org)).

**Figure 2.** Gabon 2022 cassava production forecast.



Data Source: Africa Agriculture Watch ([www.aagwa.org](http://www.aagwa.org)).

wide availability, and easy access to this type of data will allow stakeholders across the value chain to better plan and execute policy and business actions more efficiently. The data published in the briefs are generated through the Africa Crop Production (AfCP) model, an Artificial Intelligence (AI-based) model applied to remotely sensed geobiophysical data to produce estimates at pixel as well as administrative levels as early as the beginning of every growing season. In Brief 17, we provide forecasts on Cassava production in Gabon.

In 2023, cassava production in Gabon is projected to reach 386,659 metric tons, corresponding to a 5% increase from 2022 production levels. However, the most significant volumes of cassava production levels are expected in provinces such as in Mougoutsi (Nyanga), Ntem (Wouleu-Ntem), Dola (Ngounié), Léconi-Djoué (Haut-Ogooué), and Komo-Mondah (Estuaire), with production values estimated at 49,353 MT, 41,265 MT, 28,529 MT, 22,466 MT, and 22,251 MT respectively. In contrast, lower production values are observed in areas such as Lolo Bouenguidi (Ogooué-Lolo), Haut-Como (Wouleu-Ntem), Noya (Estuaire), Lombo-Bouenguidi (Ogooué-Lolo), and Zadié (Ogooué-Ivindo), with production volumes evaluated at 215, 248, 499, 699, and 821 metric tons respectively.

Compared to 2023, the most significant cassava production increases in 2023 are expected to occur in the northern and western parts of the country, particularly in Ntem (Wouleu-Ntem), Haut-Ntem (Wouleu-Ntem), Woleu (Wouleu-Ntem), Komo-Mondah (Estuaire), and Bendjé (Ogooué-Maritime), with absolute differences of 6,376 MT, 2,697 MT, 2,485 MT, 2020 MT, and 1,680 MT respectively, corresponding to relative changes of 18, 43, 13, 10, and 17 percent.

\*Associate Scientist, Department of Data Management, Digital Products, and Technology, AKADEMIYA2063

\*\* Senior Associate Scientist, Department of Data Management, Digital Products, and Technology, AKADEMIYA2063

\*\*\*Executive Chairperson, AKADEMIYA2063



## Annex – 2023 Gabon Cassava Production Forecast at District level

Provinces	Departments	2023 Production (MT)	2022 Production (MT)	Difference (MT)	Change (%)
Estuaire	Komo	18630	18108	522	3%
Estuaire	Komo-Mondah	22251	20231	2020	10%
Estuaire	Noya	499	379	120	32%
Haut-Ogooué	Léboumbi-Leyou	6201	5601	600	11%
Haut-Ogooué	Léconi-Djoué	22466	23148	-681	-3%
Haut-Ogooué	Lékoko	3869	3649	220	6%
Haut-Ogooué	Mpassa	17513	16643	870	5%
Haut-Ogooué	Plateaux	21529	20727	801	4%
Haut-Ogooué	Sébé-Brikolo	3325	3119	206	7%
Moyen-Ogooué	Abanga-Bigné	7865	7154	711	10%
Moyen-Ogooué	Ogooué et des Lacs	19051	18103	949	5%
Ngounié	Boumi-lowetsi	2872	2575	297	12%
Ngounié	Dola	28529	31106	-2578	-8%
Ngounié	Douya Onoye	13034	12670	364	3%
Ngounié	Louetsi-Wano	5373	5262	111	2%
Ngounié	Ndolou	2710	2677	33	1%
Ngounié	Ogoulou	1248	1007	241	24%
Ngounié	Tsamba Mangotsi	4734	4380	354	8%
Nyanga	Basse Banio	5639	5328	310	6%
Nyanga	Douigny	6549	6778	-228	-3%
Nyanga	Haute-Banio	999	1005	-7	-1%
Nyanga	Mougoutsi	49353	53019	-3666	-7%
Ogooué-Ivindo	Ivindo	5367	5060	306	6%
Ogooué-Ivindo	Lopé	7097	6653	444	7%
Ogooué-Ivindo	Mvoung	3106	2644	463	18%
Ogooué-Ivindo	Zadié	821	588	233	40%
Ogooué-Lolo	Lolo Bouenguidi	215	175	40	23%
Ogooué-Lolo	Lombo-Bouenguidi	699	612	87	14%
Ogooué-Lolo	Mouloudnou	3414	2811	603	21%
Ogooué-Maritime	Bendjé	11444	9764	1680	17%
Ogooué-Maritime	Étimboué	7531	6622	909	14%
Ogooué-Maritime	Ndougou	3560	3141	419	13%
Wouleu-Ntem	Haut-Como	248	181	67	37%
Wouleu-Ntem	Haut-Ntem	9044	6347	2697	43%
Wouleu-Ntem	Ntem	41265	34888	6376	18%
Wouleu-Ntem	Okano	7481	6767	714	11%
Wouleu-Ntem	Woleu	21129	18643	2485	13%
Total		386659	367566	19093	5%

MT (Metric tons): 1 MT is equivalent to 1,000 kilograms.

Change: refers to the relative difference and is calculated as (2023 production – 2022 production) divided by 2022 production

**Suggested Citation:** Ndoye, A., K. Dia, and O. Badiane. 2023. AAgWa Crop Production Forecasts Brief Series: Gabon – Cassava. AAgWa Crop Production Forecasts Brief Series, No. 17. Kigali, Rwanda: AKADEMIYA2063. <https://doi.org/10.54067/acpf.17>