

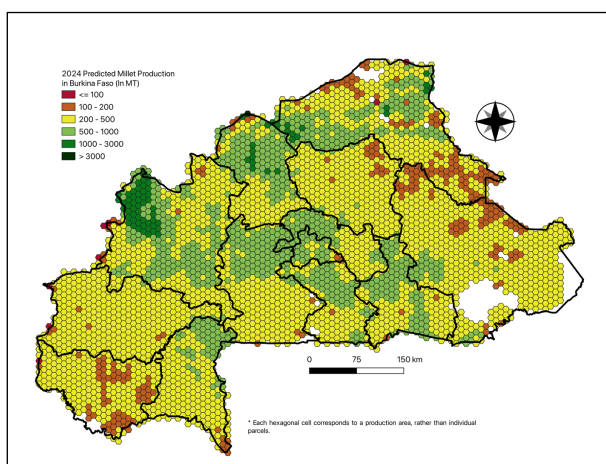
# AAGWa Crop Production Forecasts Brief Series Burkina Faso – Millet

Mansour Dia\*, Khadim Dia\*\*, and Aïssatou Ndoye\*\*\*

No. 201, October 2024

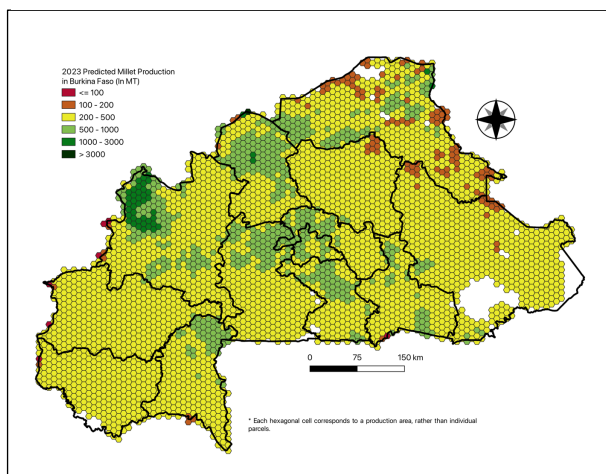
The crop production forecast brief series by AKADEMIYA2063's Africa Agriculture Watch (AAGWa) aims to provide more accurate and timely data on harvest and yields for ten major crops across nearly

**Figure 1. Burkina Faso 2024 Millet Production Forecast.**



Data source: Africa Agriculture Watch ([www.aagwa.org](http://www.aagwa.org)).

**Figure 2. Burkina Faso 2023 Millet Production Forecast.**



Data source: Africa Agriculture Watch ([www.aagwa.org](http://www.aagwa.org)).

50 African countries. The timeliness, wide availability, and easy access to this type of data will allow stakeholders across the value chain to better plan and execute policy and business actions more efficiently. The data published in the briefs are generated through the Africa Crop Production (AfCP) model, an Artificial Intelligence (AI-based) model applied to remotely sensed geo-biophysical data to produce estimates at pixel as well as administrative levels as early as the beginning of every growing season. In Brief 201, we provide forecasts on millet production in Burkina Faso.

In 2024, millet production in Burkina Faso is projected to reach 1,237,889 metric tons (MT), indicating a 10% increase over 2023 production levels. The highest millet producers are expected to be Kossi (Boucle du Mouhoun), Soum (Sahel), Yatenga (Nord), Oudalan (Sahel), and Gourma (Est), with production levels estimated at 87,246 MT, 81,236 MT, 62,454 MT, 49,020 MT, and 48,559 MT. On the contrary, lower production values are observed at Kourwéogo (Plateau-Central), Kompienga (Est), Léraba (Cascades), Nounbiel (Sud-Ouest), and Zondoma (Nord) with production of respectively, 12,236 MT, 9,597 MT, 9,460 MT, 7,063 MT, and 6,454 MT.

Compared to 2023, significant millet production increases in 2024 are expected in Soum (Sahel), Oudalan (Sahel), Yatenga (Nord), Kossi (Boucle du Mouhoun), and Séno (Sahel), with differences of respectively 19,525 MT, 12,373 MT, 9,740 MT, 9,460 MT, and 6,024 MT. These correspond to changes of 32 %, 34 %, 18 %, 12 %, and 26 %.

\*Associate Scientist, Department of Data Management, Digital Products, and Technology, AKADEMIYA2063

\*\*Senior Associate Scientist, Department of Data Management, Digital Products, and Technology, AKADEMIYA2063

\*\*\*Associate Scientist, Department of Data Management, Digital Products, and Technology, AKADEMIYA2063

## Annex – 2024 Burkina Faso Millet Production Forecast at District Level

Regions	Provinces	2024 Production (MT)	2023 Production (MT)	Difference (MT)	Change (%)
Boucle du Mouhoun	Balé	19765	18351	1414	8%
Boucle du Mouhoun	Banwa	26909	24829	2080	8%
Boucle du Mouhoun	Kossi	87246	77786	9460	12%
Boucle du Mouhoun	Mouhoun	42837	38047	4791	13%
Boucle du Mouhoun	Nayala	20629	18046	2582	14%
Boucle du Mouhoun	Sourou	26142	25007	1135	5%
Cascades	Comoé	34146	38619	-4473	-12%
Cascades	Léraba	9460	9623	-163	-2%
Centre	Kadiogo	18075	16244	1832	11%
Centre-Est	Boulgou	36009	30524	5485	18%
Centre-Est	Koulpélogo	23670	20587	3083	15%
Centre-Est	Kouritenga	18660	15726	2934	19%
Centre-Nord	Bam	18765	17312	1454	8%
Centre-Nord	Namentenga	22339	22426	-87	0%
Centre-Nord	Sanmatenga	37204	36112	1092	3%
Centre-Ouest	Boulkiemdé	31364	27042	4322	16%
Centre-Ouest	Sanguié	31368	27329	4038	15%
Centre-Ouest	Sissili	21298	21125	173	1%
Centre-Ouest	Ziro	19190	18475	715	4%
Centre-Sud	Bazèga	25209	22141	3068	14%
Centre-Sud	Nahouri	12587	11769	818	7%
Centre-Sud	Zoundwéogo	22102	19017	3086	16%
Est	Gnagna	31080	30557	523	2%
Est	Gourma	48559	43394	5165	12%
Est	Komandjoari	13104	14578	-1474	-10%
Est	Kompienga	9597	8805	792	9%
Est	Tapoa	30398	29786	612	2%
Haut-Bassins	Houet	41167	41559	-392	-1%
Haut-Bassins	KénéDougou	26306	27085	-780	-3%
Haut-Bassins	Tuy	21232	20484	748	4%
Nord	Loroum	26937	23957	2980	12%
Nord	Passoré	16392	16366	26	0%
Nord	Yatenga	62454	52714	9740	18%
Nord	Zonoma	6454	6202	252	4%
Plateau-Central	Ganzourgou	20015	18718	1297	7%
Plateau-Central	Kourwéogo	12236	11043	1194	11%
Plateau-Central	Oubritenga	18870	17244	1626	9%
Sahel	Oudalan	49020	36647	12373	34%
Sahel	Séno	28929	22905	6024	26%
Sahel	Soum	81236	61710	19525	32%
Sahel	Yagha	14100	15506	-1406	-9%
Sud-Ouest	Bougouriba	16849	15518	1331	9%
Sud-Ouest	Ioba	23007	19796	3211	16%
Sud-Ouest	Noumbiel	7063	6829	234	3%
Sud-Ouest	Poni	27910	26880	1031	4%
Total		1237889	1124420	113471	10%

**MT (Metric tons):** 1 MT is equivalent to 1,000 kilograms.

**Change:** refers to the relative difference and is calculated as (2024 prod – 2023 prod) divided by 2023 prod.



**Suggested Citation:** M. Dia, K. Dia, and A. Ndoye. 2024. AAgWa Crop Production Forecasts Brief Series: Burkina Faso – Millet. AAgWa Crop Production Forecasts Brief Series, No. 201. Kigali: AKADEMIYA2063.  
<https://doi.org/10.54067/acpf.201>