

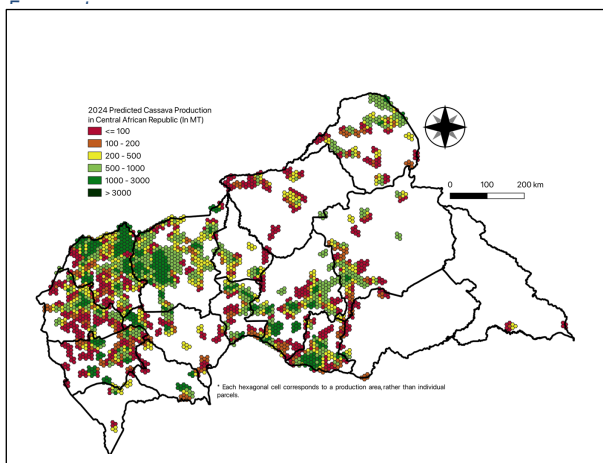
# AAGWa Crop Production Forecasts Brief Series Central African Republic – Cassava

Mansour Dia\*, Khadim Dia\*\*, and Aïssatou Ndoye\*\*\*

No. 203, October 2024

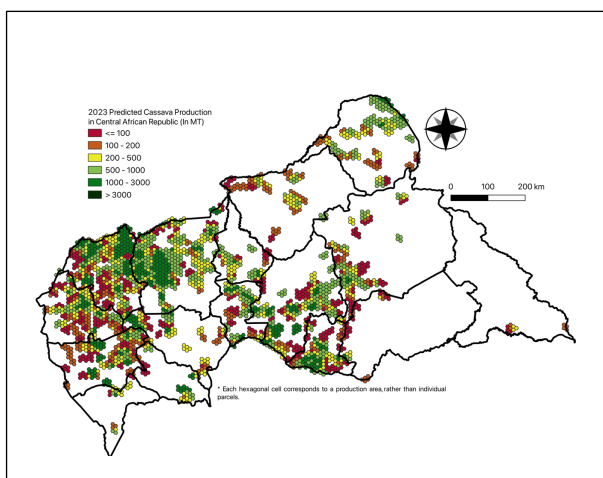
The crop production forecast brief series by AKADEMIYA2063's Africa Agriculture Watch (AAGWa) aims to provide more accurate and timely data on harvest and yields for ten major crops across nearly

**Figure 1. Central African Republic 2024 Cassava Production**



Data source: Africa Agriculture Watch ([www.aagwa.org](http://www.aagwa.org)).

**Figure 2. Central African Republic 2023 Cassava Production**



Data source: Africa Agriculture Watch ([www.aagwa.org](http://www.aagwa.org)).

50 African countries. The timeliness, wide availability, and easy access to this type of data will allow stakeholders across the value chain to better plan and execute policy and business actions more efficiently. The data published in the briefs are generated through the Africa Crop Production (AfCP) model, an Artificial Intelligence (AI-based) model applied to remotely sensed geo-biophysical data to produce estimates at pixel as well as administrative levels as early as the beginning of every growing season. In Brief 203, we provide forecasts on cassava production in Central African Republic.

In 2024, cassava production in Central African Republic is projected to reach 704,990 metric tons (MT), indicating a 3% decrease over 2023 production levels. The highest cassava producers are expected to be Bossangoa (Ouham), Paoua (Ouham-Pendé), Bocaranga (Ouham-Pendé), Markounda (Ouham), and Batangafo (Ouham), with production levels estimated at 88,612 MT, 84,963 MT, 57,604 MT, 39,519 MT, and 36,971 MT. On the contrary, lower production values are observed at Bakouma (Mbomou), Mingala (Basse-Kotto), Gamboula (Mambéré-Kadéï), Boali (Ombella-M'Poko), and Bamingui (Bamingui-Bangoran) with production of respectively, 438 MT, 407 MT, 277 MT, 250 MT, and 164 MT.

Compared to 2023, the most significant cassava production increases in 2024 are expected in districts such as Bocaranga (Ouham-Pendé), Paoua (Ouham-Pendé), Bambari (Ouaka), Alindao (Basse-Kotto), and Mobaye (Basse-Kotto), with differences of respectively

3,695 MT, 2,596 MT, 671 MT, 461 MT, and 343 MT. These correspond to changes of 7 %, 3 %, 3 %, 4 %, and 1 % respectively.

\*Associate Scientist, Department of Data Management, Digital Products, and Technology, AKADEMIYA2063

\*\*Senior Associate Scientist, Department of Data Management, Digital Products, and Technology, AKADEMIYA2063

\*\*\*Associate Scientist, Department of Data Management, Digital Products, and Technology, AKADEMIYA2063

## Annex – 2024 Central African Republic Cassava Production Forecast at District Level

Prefectures	Sub-Prefectures	2024 Production (MT)	2023 Production (MT)	Difference (MT)	Change (%)
Bamingui-Bangoran	Bamingui	164	388	-223	-58%
Bamingui-Bangoran	Ndélé	8245	11366	-3121	-27%
Basse-Kotto	Alindao	11722	11261	461	4%
Basse-Kotto	Kembé	10847	10749	98	1%
Basse-Kotto	Mingala	407	454	-48	-11%
Basse-Kotto	Mobaye	24425	24081	343	1%
Haut-Mbomou	Obo	586	695	-109	-16%
Haute-Kotto	Bria	23573	23389	184	1%
Haute-Kotto	Ouadda	2347	2508	-161	-6%
Haute-Kotto	Yalinga	1801	1690	111	7%
Kémo	Dékoa	18517	18604	-87	0%
Kémo	Sibut	8815	10120	-1305	-13%
Lobaye	Boda	706	953	-247	-26%
Lobaye	M'Baïki	8851	9335	-484	-5%
Mambéré-Kadéï	Berbérati	8966	9373	-408	-4%
Mambéré-Kadéï	Carnot	29155	31259	-2104	-7%
Mambéré-Kadéï	Gamboula	277	575	-298	-52%
Mbomou	Bakouma	438	358	80	22%
Mbomou	Gambo-Ouango	1211	1267	-56	-4%
Nana-Grébizi	Kaga-Bandoro	10298	10684	-386	-4%
Nana-Grébizi	Mbrès	5223	5529	-307	-6%
Nana-Mambéré	Baboua	5936	6928	-992	-14%
Nana-Mambéré	Baoro	12221	12977	-756	-6%
Nana-Mambéré	Bouar	27889	27640	249	1%
Ombella-M'Poko	Bimbo	897	1519	-622	-41%
Ombella-M'Poko	Boali	250	364	-114	-31%
Ombella-M'Poko	Damara	1161	1755	-594	-34%
Ombella-M'Poko	Yaloké	16263	16591	-328	-2%
Ouaka	Bakala	770	852	-82	-10%
Ouaka	Bambari	21538	20866	671	3%
Ouaka	Grimari	14879	14539	340	2%
Ouaka	Ippy	24001	24781	-780	-3%
Ouaka	Kouango	20167	21070	-904	-4%
Ouham	Batangafo	36971	38482	-1510	-4%
Ouham	Bossangoa	88612	89385	-773	-1%
Ouham	Bouca	12723	13440	-717	-5%
Ouham	Kabo	5751	5792	-41	-1%
Ouham	Markounda	39519	40852	-1333	-3%
Ouham-Pendé	Bocaranga	57604	53909	3695	7%
Ouham-Pendé	Bozoum	18580	18987	-407	-2%
Ouham-Pendé	Paoua	84963	82366	2596	3%
Sangha-Mbaéré	Bambio	804	995	-191	-19%
Sangha-Mbaéré	Nola	1982	2262	-279	-12%
Vakaga	Birao	32861	43699	-10838	-25%
Vakaga	Ouanda Djallé	2074	2444	-370	-15%
Total		704990	727133	-22147	-3%

**MT (Metric tons):** 1 MT is equivalent to 1,000 kilograms.

**Change:** refers to the relative difference and is calculated as (2024 prod – 2023 prod) divided by 2023 prod.



**Suggested Citation:** M. Dia, K. Dia, and A. Ndoye. 2024. AAgWa Crop Production Forecasts Brief Series: Central African Republic – Cassava. AAgWa Crop Production Forecasts Brief Series, No. 203. Kigali: AKADEMIYA2063.  
<https://doi.org/10.54067/acpf.203>