

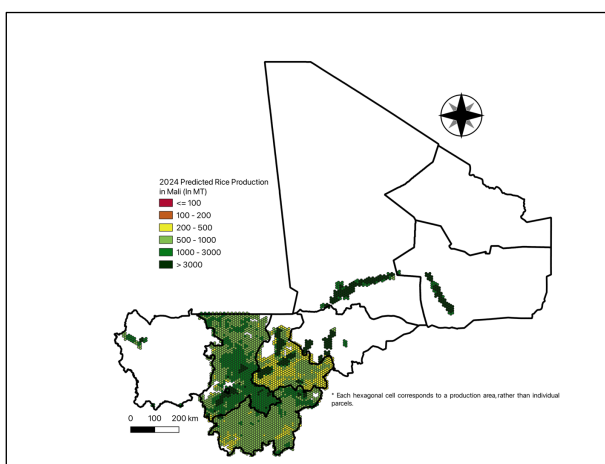
# AAGWa Crop Production Forecasts Brief Series Mali – Rice

Mansour Dia\*, Khadim Dia\*\*, and Aïssatou Ndoye\*\*\*

No. 206, October 2024

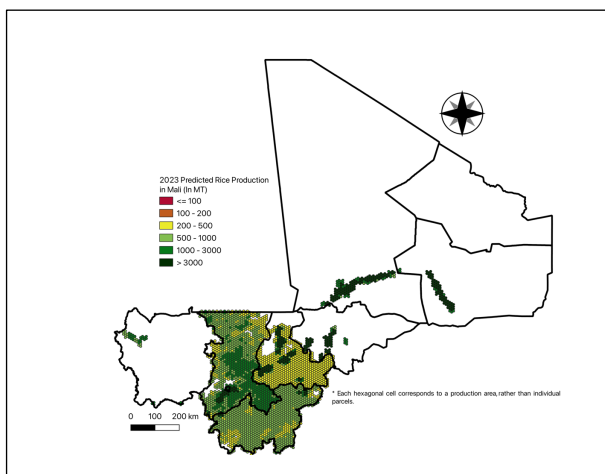
The crop production forecast brief series by AKADEMIYA2063’s Africa Agriculture Watch (AAGWa) aims to provide more accurate and timely data on harvest and yields for ten major crops across nearly 50

**Figure 1. Mali 2024 Rice Production Forecast.**



Data source: Africa Agriculture Watch ([www.aagwa.org](http://www.aagwa.org)).

**Figure 2. Mali 2023 Rice Production Forecast.**



Data source: Africa Agriculture Watch ([www.aagwa.org](http://www.aagwa.org)).

African countries. The timeliness, wide availability, and easy access to this type of data will allow stakeholders across the value chain to better plan and execute policy and business actions more efficiently. The data published in the briefs are generated through the Africa Crop Production (AfCP) model, an Artificial Intelligence (AI-based) model applied to remotely sensed geo-biophysical data to produce estimates at pixel as well as administrative levels as early as the beginning of every growing season. In Brief 206, we provide forecasts on rice production in Mali.

In 2024, rice production in Mali is projected to reach 4,113,534 metric tons (MT), indicating an 18% increase over 2023 production levels. The highest rice producers are expected to be Kati (Koulikoro), Niono (Ségou), Ségou (Ségou), Dioïla (Koulikoro), and Nara (Koulikoro), with production levels estimated at 386,837 MT, 384,035 MT, 346,047 MT, 294,883 MT, and 266,071 MT. On the contrary, lower production values are observed at Bandiagara (Mopti), Kéniéba (Kayes), Kita (Kayes), Bamako (Bamako), and Bankass (Mopti) with production of respectively, 3,244 MT, 2,761 MT, 2,578 MT, 2,401 MT, and 472 MT.

Compared to 2023, the most significant rice production increases in 2024 are expected in districts such as Kati (Koulikoro), Dioïla (Koulikoro), Nara (Koulikoro), Banamba (Koulikoro), and Ségou (Ségou), with differences of respectively 89,629 MT, 85,620 MT, 63,824 MT, 38,738 MT, and 38,157 MT. These correspond to changes of 30 %, 41 %, 32 %, 35 %, and 12 % respectively.

\*Associate Scientist, Department of Data Management, Digital Products, and Technology, AKADEMIYA2063

\*\*Senior Associate Scientist, Department of Data Management, Digital Products, and Technology, AKADEMIYA2063

\*\*\*Associate Scientist, Department of Data Management, Digital Products, and Technology, AKADEMIYA2063

## Annex – 2024 Mali Rice Production Forecast at District Level

Regions	Districts	2024 Production (MT)	2023 Production (MT)	Difference (MT)	Change (%)
Bamako	Bamako	2401	1689	713	42%
Gao	Ansongo	42362	42375	-13	0%
Gao	Bourem	40768	40619	149	0%
Gao	Gao	120567	119128	1440	1%
Kayes	Kayes	17680	12831	4848	38%
Kayes	Kéniéba	2761	1883	878	47%
Kayes	Kita	2578	2763	-186	-7%
Koulikoro	Banamba	150488	111749	38738	35%
Koulikoro	Dioïla	294883	209263	85620	41%
Koulikoro	Kangaba	65976	50078	15898	32%
Koulikoro	Kati	386837	297208	89629	30%
Koulikoro	Kolokani	136797	100802	35995	36%
Koulikoro	Koulikoro	105587	76323	29264	38%
Koulikoro	Nara	266071	202247	63824	32%
Mopti	Bandiagara	3244	2374	870	37%
Mopti	Bankass	472	321	151	47%
Mopti	Djenné	49027	42165	6863	16%
Mopti	Mopti	138844	127003	11840	9%
Mopti	Ténenkou	62608	58931	3677	6%
Ségou	Barouéli	119336	101116	18219	18%
Ségou	Bla	58319	49200	9119	19%
Ségou	Macina	163788	149083	14705	10%
Ségou	Niono	384035	360908	23127	6%
Ségou	San	51531	42118	9413	22%
Ségou	Ségou	346047	307889	38157	12%
Ségou	Tominian	31860	25818	6042	23%
Sikasso	Bougouni	154898	133872	21026	16%
Sikasso	Kadiolo	46690	38039	8651	23%
Sikasso	Kolondiéba	64644	54418	10226	19%
Sikasso	Koutiala	157526	121063	36463	30%
Sikasso	Sikasso	129163	109692	19471	18%
Sikasso	Yanfolila	95635	80720	14915	18%
Sikasso	Yorosso	30728	23869	6860	29%
Timbuktu	Diré	93386	91490	1896	2%
Timbuktu	Goundam	85914	84875	1039	1%
Timbuktu	Gourma-Rharous	78217	77868	349	0%
Timbuktu	Niafunké	70810	69090	1719	2%
Timbuktu	Tombouctou	61056	60750	306	1%
Total		4113534	3481630	631901	18%

**MT (Metric tons):** 1 MT is equivalent to 1,000 kilograms.

**Change:** refers to the relative difference and is calculated as (2024 prod – 2023 prod) divided by 2023 prod.

**Suggested Citation:** M. Dia, K. Dia, and A. Ndoye. 2024. AAgWa Crop Production Forecasts Brief Series: Mali – Rice. AAgWa Crop Production Forecasts Brief Series, No. 206. Kigali: AKADEMIYA2063.

<https://doi.org/10.54067/acpf.206>