

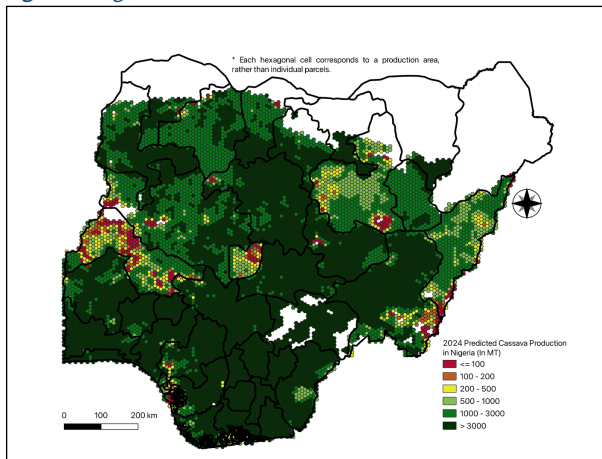
AAGWa Crop Production Forecasts Brief Series Nigeria – Cassava

Mansour Dia*, Khadim Dia**, and Aïssatou Ndoye***

No. 226, December 2024

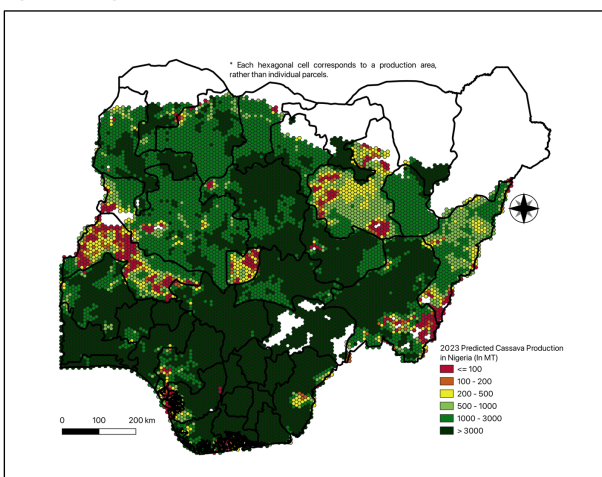
The crop production forecast brief series by AKADEMIYA2063's Africa Agriculture Watch (AAGWa) aims to provide more accurate and timely data on harvest and yields for ten major crops across nearly 50

Figure 1. Nigeria 2024 Cassava Production Forecast.



Data Source: Africa Agriculture Watch (www.aagwa.org).

Figure 2. Nigeria 2023 Cassava Production Forecast.



Data Source: Africa Agriculture Watch (www.aagwa.org).

differences of 89,146 MT, 56,000 MT, 52,644 MT, 51,645 MT, and 49,124 MT, respectively. These correspond to changes of 19 %, 10 %, 23 %, 16 %, and 23 %.

African countries. The timeliness, wide availability, and easy access to this type of data will allow stakeholders across the value chain to better plan and execute policy and business actions more efficiently. The data published in the briefs are generated through the Africa Crop Production (AfCP) model, an Artificial Intelligence (AI-based) model applied to remotely sensed geo-biophysical data to produce estimates at pixel as well as administrative levels as early as the beginning of every growing season. In Brief 226, we provide forecasts on cassava production in Nigeria.

In 2024, cassava production in Nigeria is projected to reach 66,602,423 metric tons (MT), indicating a 6% increase over 2023 production levels. The highest cassava producers are expected to be Emuoha (Rivers), Akamkpa (Cross River), Ohaji/Egbema (Imo), Gassol (Taraba), and Ikwerre (Rivers), with production levels estimated at 754,741 MT, 688,061 MT, 663,446 MT, 633,699 MT, and 602,664 MT. In contrast, lower production values are observed at Apapa (Lagos), Calabar South (Cross River), Kano (Kano), Isin (Kwara), and Ilorin South (Kwara) with production of respectively, 868 MT, 861 MT, 742 MT, 334 MT, and 227 MT.

Compared to 2023, the most significant cassava production increases in 2024 are expected in districts such as Bali (Taraba), Gassol (Taraba), Wase (Plateau), Karim Lamido (Taraba), and Chikun (Kaduna), with

*Associate Scientist, Department of Data Management, Digital Products, and Technology, AKADEMIYA2063

**Senior Associate Scientist, Department of Data Management, Digital Products, and Technology, AKADEMIYA2063

***Associate Scientist, Department of Data Management, Digital Products, and Technology, AKADEMIYA2063



Annex – 2024 Nigeria Cassava Production Forecast at District Level

States	Cities	2024 Production (MT)	2023 Production (MT)	Difference (MT)	Change (%)
Abia	Aba North	13151	12106	1045	9%
Abia	Arochukwu	73851	73058	793	1%
Abia	Bende	58277	56215	2061	4%
Abia	Ikwuano	75106	74277	829	1%
Abia	Isiala Ngwa North	105777	103270	2507	2%
Abia	Isiala Ngwa South	29952	26238	3714	14%
Abia	Isuikwuato	67431	65279	2152	3%
Abia	Obi Ngwa	13925	11643	2282	20%
Abia	Ohafia	191930	191126	805	0%
Abia	Osioma Ngwa	16105	12705	3400	27%
Abia	Ugwunagbo	13607	11029	2579	23%
Abia	Ukwa East	17081	13687	3394	25%
Abia	Ukwa West	104573	101727	2845	3%
Abia	Umu Nneochi	93227	92730	497	1%
Abia	Umuahia North	46127	44927	1200	3%
Abia	Umuahia South	16933	16346	587	4%
Adamawa	Demsa	38127	29469	8658	29%
Adamawa	Fufore	40657	35319	5338	15%
Adamawa	Ganye	35516	25814	9703	38%
Adamawa	Girie	18652	17133	1519	9%
Adamawa	Gombi	14834	12632	2202	17%
Adamawa	Guyuk	13466	10807	2660	25%
Adamawa	Hong	37706	33730	3977	12%
Adamawa	Jada	24785	19227	5558	29%
Adamawa	Lamurde	16513	11046	5467	49%
Adamawa	Madagali	4219	3209	1010	31%
Adamawa	Maiha	9340	8192	1148	14%
Adamawa	Mayo-Belwa	42098	33755	8343	25%
Adamawa	Michika	11595	9514	2081	22%
Adamawa	Mubi North	11773	10099	1674	17%
Adamawa	Mubi South	3457	2665	792	30%
Adamawa	Numan	9048	6050	2998	50%
Adamawa	Shelleng	20052	16323	3729	23%
Adamawa	Song	39738	36072	3666	10%
Adamawa	Teungo	17831	9315	8516	91%
Adamawa	Yola North	3030	2421	609	25%
Adamawa	Yola South	10911	8752	2159	25%
Akwa Ibom	Abak	126557	126787	-230	0%
Akwa Ibom	Eastern Obolo	40075	38389	1686	4%
Akwa Ibom	Eket	41343	39972	1372	3%
Akwa Ibom	Esit Eket	43588	41477	2110	5%
Akwa Ibom	Essien Udim	125141	125671	-530	0%
Akwa Ibom	Etim Ekpo	80358	80464	-107	0%
Akwa Ibom	Etinan	26341	26090	251	1%
Akwa Ibom	Ibesikpo Asutan	79418	79495	-77	0%
Akwa Ibom	Ibiono Ibom	123149	123856	-707	-1%
Akwa Ibom	Ika	41464	41491	-26	0%
Akwa Ibom	Ikono	166382	167772	-1391	-1%



Akwa Ibom	Ikot Abasi	105452	105381	71	0%
Akwa Ibom	Ikot Ekpene	45934	46246	-312	-1%
Akwa Ibom	Ini	131201	130014	1188	1%
Akwa Ibom	Itu	104131	103756	376	0%
Akwa Ibom	Mbo	39821	38432	1389	4%
Akwa Ibom	Mkpat Enin	140785	140947	-163	0%
Akwa Ibom	Nsit Atai	62208	61558	650	1%
Akwa Ibom	Nsit Ibom	87167	87325	-158	0%
Akwa Ibom	Nsit Ubium	79777	78709	1068	1%
Akwa Ibom	Obot Akara	165992	166699	-707	0%
Akwa Ibom	Okobo	85903	85890	13	0%
Akwa Ibom	Onna	15328	14358	970	7%
Akwa Ibom	Oruk Anam	228031	226700	1331	1%
Akwa Ibom	Udung Uko	33916	33685	231	1%
Akwa Ibom	Ukanafun	104877	104888	-12	0%
Akwa Ibom	Uruan	122182	121048	1134	1%
Akwa Ibom	Urue Offong	36214	36225	-10	0%
Akwa Ibom	Uyo	93548	93730	-182	0%
Anambra	Aguata	144341	143516	826	1%
Anambra	Anambra East	155841	157052	-1212	-1%
Anambra	Anambra West	138348	139130	-781	-1%
Anambra	Anaocha	52913	52671	242	0%
Anambra	Awka North	123725	124357	-632	-1%
Anambra	Awka South	73177	73624	-447	-1%
Anambra	Ayamelum	185087	186273	-1186	-1%
Anambra	Dunukofia	40759	41168	-410	-1%
Anambra	Ekwusigo	44182	43912	270	1%
Anambra	Idemili North	93809	94075	-266	0%
Anambra	Ihiala	87398	85411	1987	2%
Anambra	Njikoka	52314	52390	-77	0%
Anambra	Nnewi North	54810	54575	235	0%
Anambra	Nnewi South	107674	107031	643	1%
Anambra	Ogbaru	142633	141133	1499	1%
Anambra	Onitsha North	17560	17194	366	2%
Anambra	Orumba North	137974	138892	-918	-1%
Anambra	Orumba South	127289	127199	90	0%
Anambra	Oyi	44753	44905	-152	0%
Bauchi	Alkaleri	65831	45973	19858	43%
Bauchi	Bauchi	48623	30545	18078	59%
Bauchi	Bogoro	11315	8539	2776	33%
Bauchi	Darazo	16577	9436	7141	76%
Bauchi	Dass	10621	7119	3502	49%
Bauchi	Ganjuwa	115501	90150	25351	28%
Bauchi	Giade	5275	3015	2260	75%
Bauchi	Itas/Gadua	57078	55104	1974	4%
Bauchi	Jama'are	3968	1926	2042	106%
Bauchi	Katagum	15430	6747	8683	129%
Bauchi	Kirfi	36461	24751	11710	47%
Bauchi	Misau	5379	2723	2656	98%
Bauchi	Ningi	105978	79412	26565	33%
Bauchi	Shira	3908	1535	2373	155%
Bauchi	Tafawa-Balewa	53756	41447	12309	30%



Bauchi	Toro	73216	47767	25449	53%
Bauchi	Warji	7051	4284	2768	65%
Bayelsa	Brass	36519	27924	8595	31%
Bayelsa	Ekeremor	66649	51753	14895	29%
Bayelsa	Kolokuma/Opokuma	37881	32328	5552	17%
Bayelsa	Nembe	34471	26762	7709	29%
Bayelsa	Ogbia	85996	75891	10104	13%
Bayelsa	Sagbama	68513	59069	9444	16%
Bayelsa	Southern Ijaw	113651	90995	22656	25%
Bayelsa	Yenagoa	69283	60003	9281	15%
Benue	Ado	200529	201552	-1023	-1%
Benue	Agatu	193216	188685	4531	2%
Benue	Apa	120228	120561	-333	0%
Benue	Bukuru	444656	448020	-3364	-1%
Benue	Gboko	448698	452141	-3443	-1%
Benue	Guma	186204	183333	2871	2%
Benue	Gwer East	83121	83621	-501	-1%
Benue	Gwer West	2204	1515	689	45%
Benue	Katsina-Ala	377376	379877	-2501	-1%
Benue	Konshisha	277881	281071	-3189	-1%
Benue	Kwande	121989	120759	1231	1%
Benue	Logo	128833	125751	3081	2%
Benue	Makurdi	67694	66180	1514	2%
Benue	Obi	83493	84618	-1125	-1%
Benue	Ogbadibo	16705	16305	399	2%
Benue	Ohimini	22598	22519	79	0%
Benue	Oju	78840	79940	-1100	-1%
Benue	Okpokwu	26580	26642	-62	0%
Benue	Otukpo	116778	117433	-656	-1%
Benue	Tarka	137361	137274	87	0%
Benue	Ukum	498301	501587	-3287	-1%
Benue	Ushongo	258534	261495	-2961	-1%
Benue	Vande Ikya	177043	178500	-1457	-1%
Borno	Askira/Uba	7438	6315	1123	18%
Borno	Shani	3408	2697	712	26%
Cross River	Abi	105358	105063	294	0%
Cross River	Akamkpa	688061	649064	38997	6%
Cross River	Akpabuyo	156401	148456	7945	5%
Cross River	Bekwarra	106789	107880	-1091	-1%
Cross River	Biase	385888	380186	5702	1%
Cross River	Boki	399306	385312	13994	4%
Cross River	Calabar	9016	7829	1187	15%
Cross River	Calabar South	861	443	418	94%
Cross River	Etung	109153	103669	5484	5%
Cross River	Ikom	596899	589685	7214	1%
Cross River	Obanliku	129066	124513	4553	4%
Cross River	Obubra	393227	389050	4177	1%
Cross River	Obudu	57693	58204	-511	-1%
Cross River	Odukpani	226901	217973	8929	4%
Cross River	Ogoja	403791	405593	-1802	0%
Cross River	Yakurr	372918	371594	1324	0%
Cross River	Yala	392765	396150	-3385	-1%



Delta	Aniocha North	166873	168865	-1992	-1%
Delta	Aniocha South	259734	261652	-1917	-1%
Delta	Bomadi	3138	2050	1088	53%
Delta	Burutu	22554	13844	8710	63%
Delta	Ethiope East	128660	127004	1656	1%
Delta	Ethiope West	115905	115278	627	1%
Delta	Ika North-East	120500	121089	-589	0%
Delta	Ika South	149642	149088	553	0%
Delta	Isoko North	103017	100410	2607	3%
Delta	Isoko South	85976	82123	3853	5%
Delta	Ndokwa East	91506	86758	4748	5%
Delta	Ndokwa West	206669	205042	1627	1%
Delta	Okpe	75640	74697	943	1%
Delta	Oshimili North	132621	133051	-430	0%
Delta	Oshimili South	44725	44064	662	2%
Delta	Patani	4101	3333	769	23%
Delta	Sapele	52618	48716	3901	8%
Delta	Udu	19914	19096	819	4%
Delta	Ughelli North	184970	181810	3160	2%
Delta	Ughelli South	72880	67400	5480	8%
Delta	Ukwuani	81741	80501	1240	2%
Delta	Uvwie	14181	12951	1230	9%
Delta	Warri North	22284	14707	7577	52%
Delta	Warri South	3250	1524	1725	113%
Delta	Warri South-West	7315	3796	3519	93%
Ebonyi	Abakaliki	136285	131854	4432	3%
Ebonyi	Afikpo North	66986	66092	895	1%
Ebonyi	Afikpo South	91448	89690	1758	2%
Ebonyi	Ebonyi	181226	182654	-1428	-1%
Ebonyi	Ezza North	132455	132088	368	0%
Ebonyi	Ezza South	54515	54272	243	0%
Ebonyi	Ikwo	127936	127412	524	0%
Ebonyi	Ishielu	201310	198770	2540	1%
Ebonyi	Ivo	25327	22929	2398	10%
Ebonyi	Izzi	381336	384897	-3561	-1%
Ebonyi	Ohaozara	95172	94642	530	1%
Ebonyi	Ohaukwu	183664	185043	-1379	-1%
Ebonyi	Onicha	170746	170293	452	0%
Edo	Akoko-Edo	299731	300664	-933	0%
Edo	Egor	3055	2331	725	31%
Edo	Esan Central	79854	81220	-1366	-2%
Edo	Esan North-East	61171	60785	386	1%
Edo	Esan South-East	267771	265289	2482	1%
Edo	Esan West	62683	60115	2568	4%
Edo	Etsako Central	119994	117884	2110	2%
Edo	Etsako East	270490	269166	1324	0%
Edo	Etsako West	216596	216925	-329	0%
Edo	Igueben	67406	65043	2363	4%
Edo	Ikpoba-Okha	57403	49652	7751	16%
Edo	Oredo	8039	6105	1934	32%
Edo	Orhionmwon	135650	113343	22307	20%
Edo	Ovia North-East	97427	80570	16857	21%



Edo	Ovia South-West	92780	75292	17488	23%
Edo	Owan East	223305	220542	2763	1%
Edo	Owan West	158976	159223	-247	0%
Edo	Uhunmwonde	108585	87849	20736	24%
Ekiti	Ado-Ekiti	221943	223956	-2013	-1%
Ekiti	Efon	45613	46173	-560	-1%
Ekiti	Ekiti East	94776	95351	-575	-1%
Ekiti	Ekiti South-West	165747	166974	-1227	-1%
Ekiti	Ekiti West	100587	101783	-1197	-1%
Ekiti	Emure/Ise/Orun	186011	187422	-1411	-1%
Ekiti	Gboyin	93038	93656	-618	-1%
Ekiti	Ido-Osi	237805	239838	-2033	-1%
Ekiti	Ijero	87517	89141	-1624	-2%
Ekiti	Ikere	88988	89737	-749	-1%
Ekiti	Ikole	395944	398494	-2550	-1%
Ekiti	Ilejemeje	48398	48980	-582	-1%
Ekiti	Irepodun/Ifelodun	188164	189176	-1012	-1%
Ekiti	Ise/Orun	186739	188141	-1401	-1%
Ekiti	Moba	26412	27065	-653	-2%
Ekiti	Oye	259220	261288	-2068	-1%
Enugu	Aninri	141311	141055	256	0%
Enugu	Awgu	185522	184826	697	0%
Enugu	Enugu East	200302	202399	-2097	-1%
Enugu	Enugu North	55893	56581	-688	-1%
Enugu	Ezeagu	226360	228273	-1913	-1%
Enugu	Igbo-Etiti	111542	112900	-1358	-1%
Enugu	Igbo-eze North	102866	102396	470	0%
Enugu	Igbo-eze South	68665	68068	597	1%
Enugu	Isi-Uzo	267435	269936	-2501	-1%
Enugu	Nkanu East	291460	291805	-345	0%
Enugu	Nkanu West	124038	124647	-609	0%
Enugu	Nsukka	169727	170723	-997	-1%
Enugu	Oji-River	136961	137627	-666	0%
Enugu	Udenu	140831	141147	-317	0%
Enugu	Udi	349996	352315	-2319	-1%
Enugu	Uzo-Uwani	215895	216974	-1079	0%
Federal Capital Territory	Abaji	15437	11473	3965	35%
Federal Capital Territory	Abuja	2874	1738	1136	65%
Federal Capital Territory	Bwari	12629	10747	1882	18%
Federal Capital Territory	Gwagwalada	13367	10896	2471	23%
Federal Capital Territory	Kuje	10486	6300	4186	66%
Federal Capital Territory	Kwali	16508	11398	5111	45%
Gombe	Akko	89129	68948	20181	29%
Gombe	Balanga	36994	29173	7820	27%
Gombe	Billiri	31572	24888	6684	27%
Gombe	Dukku	82847	62275	20572	33%
Gombe	Funakaye	62238	53019	9219	17%
Gombe	Kaltungo	36922	30267	6656	22%



Gombe	Kwami	58597	46029	12568	27%
Gombe	Nafada	55198	46932	8266	18%
Gombe	Shomgom	36491	29636	6855	23%
Gombe	Yamaltu/Deba	47282	35617	11665	33%
Imo	Aboh-Mbaise	80657	80267	390	0%
Imo	Ahiazu-Mbaise	83617	83106	512	1%
Imo	Ehime-Mbano	118334	117722	611	1%
Imo	Ezinihitte Mbaise	80629	80220	409	1%
Imo	Ideato North	52912	51874	1038	2%
Imo	Ideato South	60597	60128	469	1%
Imo	Ihitte/Uboma	97370	96925	445	0%
Imo	Ikeduru	243768	241990	1779	1%
Imo	Isiala Mbano	148444	147310	1134	1%
Imo	Mbatoli	80974	80486	489	1%
Imo	Ngor-Okpala	504160	502057	2103	0%
Imo	Njaba	76906	76162	744	1%
Imo	Nwangele	87671	86960	711	1%
Imo	Obowo	81931	81460	472	1%
Imo	Oguta	337247	334234	3013	1%
Imo	Ohaji/Egbema	663446	659893	3553	1%
Imo	Okigwe	125599	124014	1585	1%
Imo	Orlu	120999	120070	929	1%
Imo	Orsu	51114	50700	414	1%
Imo	Oru East	79595	78913	682	1%
Imo	Oru West	79514	78679	835	1%
Imo	Owerri North	216316	215237	1078	1%
Imo	Owerri West	180187	179229	958	1%
Imo	Unuimo	37685	37457	229	1%
Jigawa	Birnin Kudu	228611	221856	6755	3%
Jigawa	Buji	89170	86892	2277	3%
Jigawa	Gwaram	534533	527362	7172	1%
Jigawa	Jahun	36196	35222	974	3%
Jigawa	Kiyawa	130415	128184	2230	2%
Kaduna	Birnin Gwari	200339	160231	40108	25%
Kaduna	Chikun	266542	217418	49124	23%
Kaduna	Giwa	158532	137704	20827	15%
Kaduna	Igabi	257135	218084	39051	18%
Kaduna	Ikara	84137	74091	10046	14%
Kaduna	Jaba	49176	44445	4731	11%
Kaduna	Jema'a	127726	112358	15368	14%
Kaduna	Kachia	177912	139446	38466	28%
Kaduna	Kaduna North	10749	9072	1677	18%
Kaduna	Kagarko	162919	140847	22072	16%
Kaduna	Kajuru	105142	85952	19190	22%
Kaduna	Kaura	34976	30104	4873	16%
Kaduna	Kauru	106970	83089	23881	29%
Kaduna	Kubau	186962	155131	31831	21%
Kaduna	Kudan	38654	33901	4754	14%
Kaduna	Lere	181587	154834	26753	17%
Kaduna	Makarfi	34158	30210	3948	13%
Kaduna	Sabon Gari	20561	18067	2495	14%
Kaduna	Sanga	83858	73296	10562	14%



Kaduna	Soba	161685	137487	24199	18%
Kaduna	Zangon Kataf	154473	128710	25763	20%
Kaduna	Zaria	26307	23807	2500	11%
Kano	Albasu	9252	6434	2818	44%
Kano	Bagwai	2971	1944	1027	53%
Kano	Bebeji	37568	29870	7698	26%
Kano	Bunkure	16588	11704	4884	42%
Kano	Dawakin Kudu	9072	6282	2789	44%
Kano	Dogwuwa	55197	42303	12894	30%
Kano	Garko	11450	8784	2666	30%
Kano	Garum Mallam	10474	8059	2414	30%
Kano	Gaya	2698	1922	776	40%
Kano	Gwarzo	14866	11658	3208	28%
Kano	Kabo	11867	9063	2804	31%
Kano	Kano	742	329	413	126%
Kano	Karaye	19971	15979	3992	25%
Kano	Kibiya	18866	14434	4432	31%
Kano	Kiru	38599	31805	6793	21%
Kano	Kura	4089	2883	1206	42%
Kano	Madobi	8010	5853	2157	37%
Kano	Makoda	5258	4408	850	19%
Kano	Rano	18743	14846	3897	26%
Kano	Rimin Gado	8037	5940	2097	35%
Kano	Rogo	38879	31609	7271	23%
Kano	Shanono	17055	13565	3490	26%
Kano	Sumaila	57186	43429	13757	32%
Kano	Takai	30300	22511	7788	35%
Kano	Tofa	2715	1993	722	36%
Kano	Tsanyawa	7256	5553	1702	31%
Kano	Tudun Wada	48437	37827	10611	28%
Kano	Wudil	10776	7730	3047	39%
Katsina	Bakori	34179	28158	6021	21%
Katsina	Batagarawa	6548	4935	1613	33%
Katsina	Batsari	21975	16673	5302	32%
Katsina	Bindawa	1302	916	386	42%
Katsina	Charanchi	17621	13835	3786	27%
Katsina	Dandume	20502	17036	3466	20%
Katsina	Danja	16235	13391	2843	21%
Katsina	Danmusa	26275	20547	5728	28%
Katsina	Dutsinma	12621	9464	3157	33%
Katsina	Faskari	68106	55037	13069	24%
Katsina	Funtua	26605	22249	4357	20%
Katsina	Ingawa	1112	795	317	40%
Katsina	Jibia	3837	2559	1278	50%
Katsina	Kafur	39563	32178	7385	23%
Katsina	Kankara	45527	36260	9267	26%
Katsina	Kankia	17025	12415	4609	37%
Katsina	Kurfi	13202	10074	3128	31%
Katsina	Kusada	7107	5461	1646	30%
Katsina	Malumfashi	26510	20755	5755	28%
Katsina	Matazu	17773	13849	3924	28%
Katsina	Musawa	29603	23658	5946	25%



Katsina	Rimi	8543	6677	1866	28%
Katsina	Sabuwa	35798	30478	5321	17%
Katsina	Safana	31443	23757	7686	32%
Kebbi	Aleiro	6002	4467	1536	34%
Kebbi	Arewa Dandi	29602	21778	7824	36%
Kebbi	Argungu	18211	12713	5498	43%
Kebbi	Augie	8237	6869	1367	20%
Kebbi	Bagudo	163508	142377	21131	15%
Kebbi	Birnin Kebbi	27308	21602	5706	26%
Kebbi	Bunza	21877	17402	4476	26%
Kebbi	Dandi	77922	65278	12644	19%
Kebbi	Danko Wasagu	158522	131135	27387	21%
Kebbi	Fakai	78112	67863	10248	15%
Kebbi	Gwandu	36013	29139	6874	24%
Kebbi	Jega	31249	25563	5686	22%
Kebbi	Kalgo	19239	15145	4094	27%
Kebbi	Koko/Besse	81254	72964	8290	11%
Kebbi	Maiyama	90988	78819	12169	15%
Kebbi	Ngaski	94063	79306	14756	19%
Kebbi	Sakaba	67730	55826	11904	21%
Kebbi	Shanga	63284	55092	8191	15%
Kebbi	Suru	48305	41051	7253	18%
Kebbi	Yauri	38138	32793	5345	16%
Kebbi	Zuru	64802	58739	6063	10%
Kogi	Adavi	106348	104983	1365	1%
Kogi	Ajaokuta	238770	235093	3677	2%
Kogi	Ankpa	262491	261422	1069	0%
Kogi	Bassa	441560	437895	3665	1%
Kogi	Dekina	491371	484815	6556	1%
Kogi	Ibaji	113018	95936	17082	18%
Kogi	Igalamela-Odolu	324697	315386	9311	3%
Kogi	Ijumu	71502	64413	7089	11%
Kogi	Kabba/Bunu	284121	261682	22439	9%
Kogi	Kogi	194306	179066	15239	9%
Kogi	Lokoja	436567	413817	22750	5%
Kogi	Mopa-Muro	41193	34554	6639	19%
Kogi	Ofu	324574	317898	6676	2%
Kogi	Ogori/Magongo	30088	30576	-488	-2%
Kogi	Okehi	136787	134919	1868	1%
Kogi	Okene	54491	54652	-161	0%
Kogi	Olamaboro	241261	236175	5086	2%
Kogi	Omala	260383	249138	11246	5%
Kogi	Yagba East	140119	128049	12070	9%
Kogi	Yagba West	68711	63503	5208	8%
Kwara	Asa	26267	20135	6133	30%
Kwara	Baruten	87140	59917	27222	45%
Kwara	Edu	65567	53105	12462	23%
Kwara	Ekiti	1025	805	221	27%
Kwara	Ifelodun	26738	17398	9340	54%
Kwara	Ilorin East	4971	2878	2092	73%
Kwara	Ilorin South	227	104	123	119%
Kwara	Ilorin West	1160	575	585	102%



Kwara	Irepodun	14284	11054	3229	29%
Kwara	Isin	334	53	281	532%
Kwara	Kaiama	31839	22247	9592	43%
Kwara	Moro	25656	17501	8155	47%
Kwara	Offa	2726	2149	577	27%
Kwara	Oke-Ero	4700	3344	1356	41%
Kwara	Oyun	6762	5295	1467	28%
Kwara	Pategi	58312	43635	14677	34%
Lagos	Alimosho	3432	2838	594	21%
Lagos	Amuwo Odofin	34008	32804	1205	4%
Lagos	Apapa	868	766	102	13%
Lagos	Badagry	170255	171036	-780	0%
Lagos	Epe	298443	304008	-5566	-2%
Lagos	Eti-Osa	47911	49197	-1286	-3%
Lagos	Ibeju-Lekki	130922	130317	605	0%
Lagos	Ifako/Ijaye	1041	638	403	63%
Lagos	Ikeja	3466	2755	710	26%
Lagos	Ikorodu	71468	70881	587	1%
Lagos	Kosofe	3244	2679	566	21%
Lagos	Lagos Island	17449	17556	-107	-1%
Lagos	Mainland	2430	2125	304	14%
Lagos	Ojo	63411	64087	-676	-1%
Nasarawa	Akwanga	62532	54709	7822	14%
Nasarawa	Awe	115668	91566	24102	26%
Nasarawa	Doma	144965	118602	26363	22%
Nasarawa	Karu	176710	157398	19312	12%
Nasarawa	Keana	76790	65411	11379	17%
Nasarawa	Keffi	19617	18383	1234	7%
Nasarawa	Kokona	97744	83863	13881	17%
Nasarawa	Lafia	214046	189129	24917	13%
Nasarawa	Nasarawa	239798	190779	49019	26%
Nasarawa	Nasarawa Eggon	107902	97737	10165	10%
Nasarawa	Obi	109707	101838	7869	8%
Nasarawa	Toto	117625	94173	23452	25%
Nasarawa	Wamba	70640	60059	10581	18%
Niger	Agai	86191	70318	15872	23%
Niger	Agwara	66424	55351	11073	20%
Niger	Bida	5079	4388	691	16%
Niger	Borgu	110763	89493	21269	24%
Niger	Bosso	90598	74275	16323	22%
Niger	Chanchaga	3926	3154	771	24%
Niger	Edati	21840	18459	3381	18%
Niger	Gbako	72987	58896	14092	24%
Niger	Gurara	58108	49482	8627	17%
Niger	Katcha	78312	64085	14227	22%
Niger	Kontagora	65108	51267	13841	27%
Niger	Lapai	108116	83011	25105	30%
Niger	Lavun	124326	104814	19512	19%
Niger	Magama	136363	111397	24966	22%
Niger	Mariga	184161	144904	39257	27%
Niger	Mashegu	175786	139903	35883	26%
Niger	Mokwa	138962	114480	24482	21%



Niger	Muya	66889	51801	15089	29%
Niger	Paikoro	110400	90783	19617	22%
Niger	Rafi	118746	95176	23570	25%
Niger	Rijau	116665	97173	19492	20%
Niger	Shiroro	185052	146631	38421	26%
Niger	Suleja	10294	8808	1486	17%
Niger	Wushishi	47235	36965	10270	28%
Ogun	Abeokuta North	168833	165701	3132	2%
Ogun	Abeokuta South	3201	2436	765	31%
Ogun	Ado Odo/Ota	183880	187167	-3286	-2%
Ogun	Ewekoro	72945	71611	1334	2%
Ogun	Ifo	151202	152576	-1375	-1%
Ogun	Ijebu East	166076	156788	9288	6%
Ogun	Ijebu North	162550	162101	448	0%
Ogun	Ijebu North-East	76271	78116	-1845	-2%
Ogun	Ikenne	39038	39575	-537	-1%
Ogun	Imeko-Afon	97046	84875	12172	14%
Ogun	Ipokia	201627	201391	236	0%
Ogun	Obafemi-Owode	262051	258127	3924	2%
Ogun	Odeda	142475	130214	12261	9%
Ogun	Odogbolu	89312	90305	-992	-1%
Ogun	Ogun Waterside	152222	145927	6295	4%
Ogun	Remo-North	41737	42465	-727	-2%
Ogun	Shagamu	87105	87108	-3	0%
Ogun	Yewa North	311643	299650	11993	4%
Ogun	Yewa South	207638	210843	-3204	-2%
Ondo	Akoko North-East	95180	93596	1584	2%
Ondo	Akoko North-West	102711	99445	3265	3%
Ondo	Akoko South-East	81226	81669	-442	-1%
Ondo	Akoko South-West	130084	129351	733	1%
Ondo	Akure North	202449	202523	-74	0%
Ondo	Akure South	38223	38261	-38	0%
Ondo	Ese-Odo	55494	47678	7816	16%
Ondo	Idanre	183104	172133	10971	6%
Ondo	Ifedore	113311	114531	-1220	-1%
Ondo	Ilaje	147126	135491	11635	9%
Ondo	Ile-Oluji/Okeigbo	24925	24262	663	3%
Ondo	Irele	112247	105919	6329	6%
Ondo	Odigbo	233674	222265	11409	5%
Ondo	Okitipupa	174169	172130	2039	1%
Ondo	Ondo East	87294	85864	1430	2%
Ondo	Ondo West	43567	37604	5963	16%
Ondo	Ose	242541	236434	6107	3%
Ondo	Owo	169310	167372	1938	1%
Osun	Aiyedade	61157	54926	6231	11%
Osun	Atakumosa East	81867	80166	1701	2%
Osun	Atakumosa West	112324	112545	-221	0%
Osun	Ayedire	41575	42049	-474	-1%
Osun	Boluwaduro	15402	15241	162	1%
Osun	Boripe	24442	25031	-588	-2%
Osun	Ede North	19899	20131	-232	-1%
Osun	Ede South	57669	58180	-511	-1%



Osun	Egbedore	63426	64247	-821	-1%
Osun	Ejigbo	78367	79017	-649	-1%
Osun	Ife East	20717	21094	-377	-2%
Osun	Ife North	92495	91169	1327	1%
Osun	Ife South	17787	14768	3019	20%
Osun	Ifedayo	1248	993	255	26%
Osun	Ifelodun	60680	61359	-679	-1%
Osun	Ila	72295	72521	-226	0%
Osun	Ilesha East	19557	19791	-235	-1%
Osun	Ilesha West	14126	13879	247	2%
Osun	Irepodun	43928	44680	-752	-2%
Osun	Irewole	78917	78487	430	1%
Osun	Isokan	34283	34376	-93	0%
Osun	Iwo	64557	64928	-371	-1%
Osun	Obokun	132368	133432	-1064	-1%
Osun	Odo-Otin	59819	60519	-700	-1%
Osun	Ola Oluwa	81383	82131	-747	-1%
Osun	Olorunda	15666	15586	81	1%
Osun	Oriade	165513	166950	-1437	-1%
Osun	Orolu	21823	22194	-371	-2%
Oyo	Afijio	99888	94442	5447	6%
Oyo	Akinyele	59664	55416	4249	8%
Oyo	Atiba	118869	108145	10723	10%
Oyo	Atisbo	92062	76055	16007	21%
Oyo	Egbeda	49993	49009	984	2%
Oyo	Ibadan North-West	2431	1720	711	41%
Oyo	Ibarapa Central	14804	11134	3670	33%
Oyo	Ibarapa East	31203	24148	7054	29%
Oyo	Ibarapa North	89517	77505	12012	15%
Oyo	Ido	61441	50631	10810	21%
Oyo	Irepo	64756	58453	6303	11%
Oyo	Iseyin	112488	99165	13323	13%
Oyo	Itesiwaju	158669	148739	9930	7%
Oyo	Iwajowa	109341	93059	16282	17%
Oyo	Kajola	129418	128824	594	0%
Oyo	Lagelu	30519	29227	1293	4%
Oyo	Ogbomosho North	21159	19875	1284	6%
Oyo	Ogbomosho South	19159	19251	-92	0%
Oyo	Ogo Oluwa	91158	89851	1308	1%
Oyo	Olorunsogo	48294	40929	7364	18%
Oyo	Oluyole	52085	47104	4981	11%
Oyo	Ona Ara	20419	19343	1076	6%
Oyo	Orelope	87357	80141	7216	9%
Oyo	Ori-Ire	147182	136869	10314	8%
Oyo	Oyo East	22685	21496	1189	6%
Oyo	Oyo West	37694	33358	4337	13%
Oyo	Saki East	132315	119087	13228	11%
Oyo	Saki West	108109	92684	15425	17%
Oyo	Surulere	137248	133670	3578	3%
Plateau	Barkin Ladi	87758	82081	5677	7%
Plateau	Bassa	83927	71614	12313	17%
Plateau	Bokkos	62054	55983	6071	11%



Plateau	Jos East	40627	35889	4738	13%
Plateau	Jos North	35492	32509	2983	9%
Plateau	Jos South	43751	41018	2733	7%
Plateau	Kanam	177745	150161	27584	18%
Plateau	Kanke	110329	102478	7851	8%
Plateau	Langtang North	106178	99639	6539	7%
Plateau	Langtang South	109078	93818	15260	16%
Plateau	Mangu	168767	160318	8449	5%
Plateau	Mikang	60966	55811	5155	9%
Plateau	Pankshin	148732	138094	10638	8%
Plateau	Qua'an Pan	192045	170572	21473	13%
Plateau	Riyom	91938	85959	5979	7%
Plateau	Shendam	225093	196948	28145	14%
Plateau	Wase	278341	225697	52644	23%
Rivers	Abua/Odual	119030	111489	7541	7%
Rivers	Ahoada East	55800	51245	4554	9%
Rivers	Ahoada West	96777	90842	5935	7%
Rivers	Akuku-Toru	6223	4271	1952	46%
Rivers	Asari-Toru	20486	18169	2317	13%
Rivers	Bonny	26755	23521	3234	14%
Rivers	Degema	21802	19113	2689	14%
Rivers	Eleme	143931	142938	993	1%
Rivers	Emuoha	754741	750920	3821	1%
Rivers	Etche	585380	582064	3317	1%
Rivers	Gokana	73300	72974	326	0%
Rivers	Ikwerre	602664	599301	3363	1%
Rivers	Khana	246558	243528	3030	1%
Rivers	Obio/Akpor	188533	187558	975	1%
Rivers	Ogba/Egbema/Ndoni	319229	314552	4677	1%
Rivers	Ogu/Bolo	69647	69359	288	0%
Rivers	Okrika	46209	45319	890	2%
Rivers	Omumma	275227	273604	1624	1%
Rivers	Oyigbo	193785	191422	2364	1%
Rivers	Port Harcourt	73611	72258	1353	2%
Sokoto	Bodinga	3279	2586	693	27%
Sokoto	Dange-Shuni	15266	12310	2956	24%
Sokoto	Kebbe	80764	69514	11250	16%
Sokoto	Rabah	5144	3935	1209	31%
Sokoto	Shagari	65602	56245	9357	17%
Sokoto	Tambuwal	221341	205578	15763	8%
Sokoto	Tureta	36603	32299	4304	13%
Sokoto	Yabo	34350	29584	4766	16%
Taraba	Ardo-Kola	253125	231129	21996	10%
Taraba	Bali	546952	457805	89146	19%
Taraba	Donga	281339	248201	33138	13%
Taraba	Gashaka	145563	110554	35009	32%
Taraba	Gassol	633699	577699	56000	10%
Taraba	Ibi	176467	146138	30330	21%
Taraba	Jalingo	25719	24569	1150	5%
Taraba	Karim Lamido	367225	315580	51645	16%
Taraba	Kurmi	129797	102675	27122	26%
Taraba	Lau	208396	197345	11051	6%



Taraba	Sardauna	100150	76690	23460	31%
Taraba	Takum	118605	104588	14017	13%
Taraba	Ussa	21025	14863	6162	41%
Taraba	Wukari	337253	298760	38494	13%
Taraba	Yorro	166660	156441	10219	7%
Taraba	Zing	77085	74300	2785	4%
Yobe	Fika	77742	69286	8456	12%
Yobe	Gujba	96224	92513	3710	4%
Yobe	Gulani	291257	278908	12349	4%
Zamfara	Anka	61048	49803	11245	23%
Zamfara	Bakura	41692	32054	9639	30%
Zamfara	Birnin-Magaji/Kiyaw	55740	47011	8729	19%
Zamfara	Bukkuyum	85062	69323	15740	23%
Zamfara	Bungudu	80145	69030	11115	16%
Zamfara	Gummi	97228	78238	18991	24%
Zamfara	Gusau	130058	107544	22514	21%
Zamfara	Kaura Namoda	49875	43820	6055	14%
Zamfara	Maradun	50517	40693	9825	24%
Zamfara	Maru	193244	152433	40811	27%
Zamfara	Shinkafi	7117	5565	1552	28%
Zamfara	Talata-Mafara	40771	35200	5570	16%
Zamfara	Tsafe	103079	85102	17977	21%
Zamfara	Zurmi	79100	61261	17839	29%
Total		66602423	62780024	3822417	6%

MT (Metric tons): 1 MT is equivalent to 1,000 kilograms.

Change: refers to the relative difference and is calculated as (2024 prod – 2023 prod) divided by 2023 prod.

Suggested Citation: M. Dia, K. Dia, and A. Ndoye. 2024. AAgWa Crop Production Forecasts Brief Series: Nigeria – Cassava. AAgWa Crop Production Forecasts Brief Series, No. 226. Kigali: AKADEMIYA2063.

<https://doi.org/10.54067/acpf.226>