

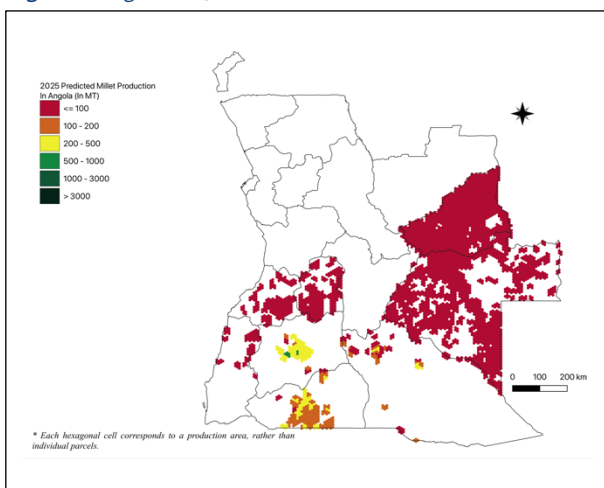
AAGWa Crop Production Forecasts Brief Series Angola – Millet

Aïssatou Ndoye*, Khadim Dia**, and Mansour Dia***

No. 242, April 2025

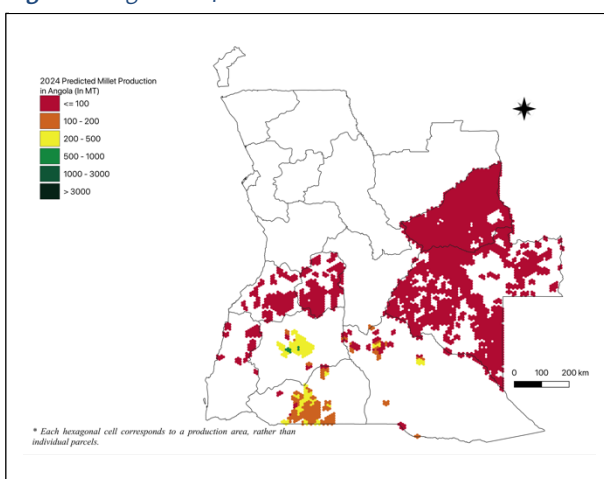
The crop production forecast brief series by AKADEMIYA2063's Africa Agriculture Watch (AAGWa) aims to provide more accurate and timely data on harvest and yields for 10 major crops across nearly 50

Figure 1. Angola 2025 Millet Production Forecast.



Data source: Africa Agriculture Watch (www.aagwa.org).

Figure 2. Angola 2024 Millet Production Forecast.



Data source: Africa Agriculture Watch (www.aagwa.org).

African countries. The timeliness, wide availability, and easy access to this type of data will allow stakeholders across the value chain to better plan and execute policy and business actions more efficiently. The data published in the briefs are generated through the Africa Crop Production (AfCP) model, an Artificial Intelligence (AI-based) model applied to remotely sensed geo-biophysical data to produce estimates at pixel as well as administrative levels as early as the beginning of every growing season. In Brief 242, we provide forecasts on millet production in Angola.

In 2025, millet production in Angola is projected to reach 57,702 metric tons (MT), which indicates a 2% increase over 2024 production levels. The highest millet producers are expected to be the Southern districts such as Ombadja (Cunene), Matala (Huíla), Cuanhama (Cunene), Tchipungo (Huíla), and Chicomba (Huíla), with production levels estimated at 12,871 MT, 6,349 MT, 6,319 MT, 4,915 MT, and 2,946 MT, respectively. In comparison, lower production values are observed in Rivungo (Cuando Cubango), Chinguar (Bié), Lobito (Benguela), and Quirima (Malanje), with production levels reaching only 5 MT, 12 MT, 14 MT, and 17 MT, respectively.

Compared to 2024, the most significant millet production increases in 2025 are expected to occur in districts such as Moxico, Luchazes (Moxico), and Lumbala-Nguimbo (Moxico), with differences of respectively 753 MT, 605 MT, and 275 MT. These correspond to changes of 93%, 159%, and 23%.


*Associate Scientist, Department of Data Management, Digital Products, and Technology, AKADEMIYA2063

**Senior Associate Scientist, Department of Data Management, Digital Products, and Technology, AKADEMIYA2063

***Associate Scientist, Department of Data Management, Digital Products, and Technology, AKADEMIYA2063

Annex – 2025 Angola Millet Production Forecasts at District level

Provinces	Municipalities	2025 Production (MT)	2024 Production (MT)	Difference (MT)	Change (%)
Benguela	Baía Farta	170	180	-10	-6%
Benguela	Balombo	115	123	-9	-7%
Benguela	Benguela	56	66	-10	-16%
Benguela	Bocoio	177	202	-24	-12%
Benguela	Caiambambo	610	626	-16	-2%
Benguela	Chongoroi	255	268	-13	-5%
Benguela	Cubal	1179	1183	-3	0%
Benguela	Ganda	280	287	-7	-2%
Benguela	Lobito	14	22	-8	-37%
Bié	Chinguar	12	0	12	inf
Bié	Cuemba	23	10	13	131%
Cuando Cubango	Cuanger	363	364	0	0%
Cuando Cubango	Cuchi	929	899	30	3%
Cuando Cubango	Cuito				
Cuando Cubango	Cuanavale	1256	1259	-3	0%
Cuando Cubango	Mavinga	25	5	20	385%
Cuando Cubango	Menongue	2155	2140	15	1%
Cuando Cubango	Rivungo	5	5	1	12%
Cunene	Cahama	92	87	5	6%
Cunene	Cuanhama	6319	6100	219	4%
Cunene	Cuvelai	1576	1572	4	0%
Cunene	Namakunde	2717	2668	50	2%
Cunene	Ombadja	12871	12631	240	2%
Huambo	Bailundo	93	31	62	196%
Huambo	Caála	280	16	264	1641%
Huambo	Catchiungo	59	0	59	inf
Huambo	Ekunha	42	12	29	242%
Huambo	Huambo	53	1	52	5422%
Huambo	Londuimbale	47	26	20	77%
Huambo	Longonjo	80	8	72	927%
Huambo	Mungo	36	3	32	1033%
Huambo	Tchicala-				
Huambo	Tcholoanga	82	3	80	2947%
Huambo	Ukuma	83	59	24	40%
Huíla	Caconda	24	2	22	1190%
Huíla	Caluquembe	186	185	2	1%
Huíla	Chicomba	2946	3008	-62	-2%
Huíla	Jamba	486	495	-9	-2%
Huíla	Matala	6349	6475	-126	-2%
Huíla	Tchipungo	4915	5004	-90	-2%
Lunda Sul	Cacolo	684	442	242	55%
Lunda Sul	Dala	828	885	-57	-6%
Lunda Sul	Muconda	1284	1964	-680	-35%
Lunda Sul	Saurimo	1267	1916	-649	-34%
Malanje	Quirima	17	12	5	44%
Moxico	Alto Zambeze	657	848	-191	-22%
Moxico	Camanongue	217	178	39	22%
Moxico	Cameia	110	91	19	21%
Moxico	Léua	276	229	48	21%



Moxico	Luau	307	357	-50	-14%
Moxico	Lucano	185	213	-29	-13%
Moxico	Luchazes	987	382	605	159%
Moxico	Lumbala-				
Moxico	Nguimbo	1462	1187	275	23%
Moxico	Moxico	1562	809	753	93%
Namibe	Bibala	444	442	1	0%
Namibe	Camacuio	252	238	14	6%
Namibe	Namibe	166	114	52	46%
Namibe	Virei	36	31	5	18%
Total		57702	56363	1339	2%

MT (Metric tons): 1 MT is equivalent to 1,000 kilograms.

Change: refers to the relative difference and is calculated as (2025 prod – 2023 prod) divided by 2023 prod.

Suggested Citation: Ndoye, A., K. Dia, and M. Dia. 2025. AAgWa Crop Production Forecasts Brief Series: Angola – Millet. AAgWa Crop Production Forecasts Brief Series, No. 242. Kigali: AKADEMIYA2063.

<https://doi.org/10.54067/acpf.242>