

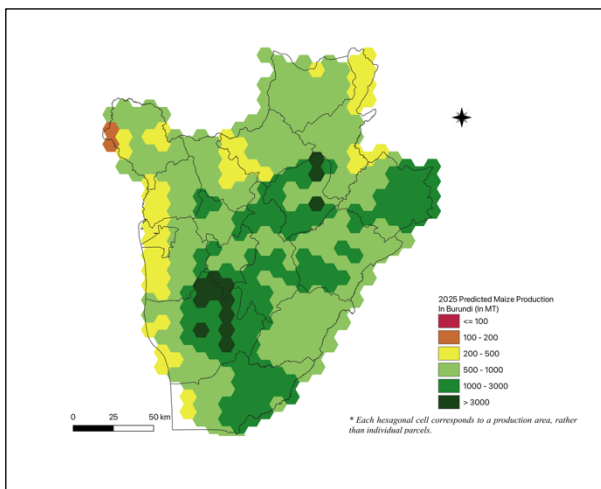
AAGWa Crop Production Forecasts Brief Series Burundi – Maize

Aïssatou Ndoye*, Khadim Dia**, and Mansour Dia***

No. 255, May 2025

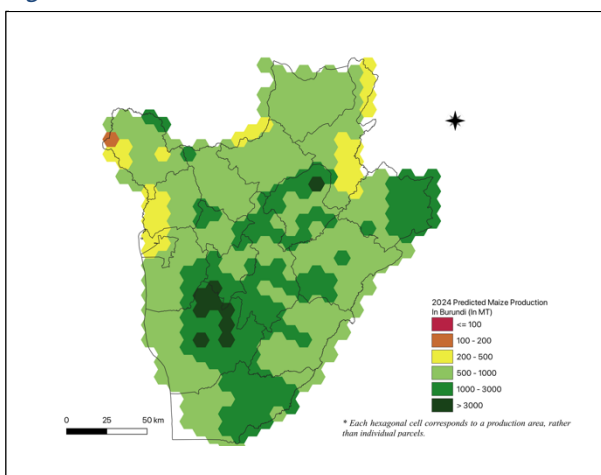
The crop production forecast brief series by AKADEMIYA2063's Africa Agriculture Watch (AAGWa) aims to provide more accurate and timely data on harvest and yields for 11 major crops across nearly 50

Figure 1. Burundi 2025 Maize Production Forecast.



Data source: Africa Agriculture Watch (www.aagwa.org).

Figure 2. Burundi 2024 Maize Production Forecast.



Data source: Africa Agriculture Watch (www.aagwa.org).

African countries. The timeliness, wide availability, and easy access to this type of data will allow stakeholders across the value chain to better plan and execute policy and business actions more efficiently. The data published in the briefs are generated through the Africa Crop Production (AfCP) model, an Artificial Intelligence (AI-based) model applied to remotely sensed geo-biophysical data to produce estimates at pixel as well as administrative levels as early as the beginning of every growing season. In Brief 255, we provide forecasts on maize production in Burundi.

In 2025, maize production in Burundi is projected to reach 316,707 metric tons (MT), which indicates a 2% increase over 2024 production levels. The highest maize producers are expected to be the Northern and Southern communes such as Mugamba (Bururi), Bururi, Makamba, Kayogoro (Makamba), and Gisozi (Mwaro), with production levels estimated at 15,704 MT, 12,930 MT, 11,651 MT, 7,821 MT, and 7,470 MT, respectively. In comparison, lower production values are observed in Ngagara (Bujumbura Mairie), Rugombo (Cibitoke), Gahombo (Kayanza), Mpanda (Bubanza), and Lake Tanganyika (Makamba), with production of, respectively, 289 MT, 363 MT, 387 MT, 463 MT, and 470 MT.

Compared to 2024, the most significant maize production increases in 2025 are expected to occur in Kigamba (Cankuzo), Gisuru (Ruyigi), Mugamba, Makamba, and Mishiha (Cankuzo), with differences of respectively 1,140 MT, 1,103 MT, 842 MT, 803 MT, and 697

MT. These correspond to changes of 31%, 21%, 6%, 7%, and 10%.

*Associate Scientist, Department of Data Management, Digital Products, and Technology, AKADEMIYA2063

**Senior Associate Scientist, Department of Data Management, Digital Products, and Technology, AKADEMIYA2063

***Associate Scientist, Department of Data Management, Digital Products, and Technology, AKADEMIYA2063

Annex – 2025 Burundi Maize Production Forecast at District Level

Provinces	Communes	2025 Production (MT)	2024 Production (MT)	Difference (MT)	Change (%)
Bubanza	Bubanza	1103	1020	83	8%
Bubanza	Gihanga	1266	1190	76	6%
Bubanza	Mpanda	463	464	-1	0%
Bubanza	Musigati	2132	2327	-195	-8%
Bubanza	Rugazi	1937	1976	-38	-2%
Bujumbura Mairie	Ngagara	289	301	-12	-4%
Bujumbura Rural	Bugarama	1382	1885	-502	-27%
Bujumbura Rural	Isale	718	697	21	3%
Bujumbura Rural	Kabezi	639	642	-3	0%
Bujumbura Rural	Kanyosha1	696	592	104	18%
Bujumbura Rural	Lake Tanganyika	1547	2861	-1314	-46%
Bujumbura Rural	Mubimbi	742	638	104	16%
Bujumbura Rural	Mugongomanga	1023	1221	-198	-16%
Bujumbura Rural	Muhuta	564	633	-69	-11%
Bujumbura Rural	Mukike	1624	2320	-696	-30%
Bujumbura Rural	Mutambu	909	1019	-110	-11%
Bujumbura Rural	Mutimbuzi	578	538	40	7%
Bujumbura Rural	Nyabiraba	955	945	9	1%
Bururi	Burambi	2852	3176	-324	-10%
Bururi	Bururi	12930	12273	657	5%
Bururi	Buyengero	6459	5920	540	9%
Bururi	Lake Tanganyika	2572	3868	-1296	-33%
Bururi	Matana	5861	5280	581	11%
Bururi	Mugamba	15704	14862	842	6%
Bururi	Rumonge	2012	2155	-144	-7%
Bururi	Rutovu	2993	2969	25	1%
Bururi	Songa	7349	6786	563	8%
Bururi	Vyanda	3358	3597	-240	-7%
Cankuzo	Cankuzo	5591	5068	523	10%
Cankuzo	Cendajuru	2004	1669	336	20%
Cankuzo	Gisagara	4945	4435	510	12%
Cankuzo	Kigamba	4804	3664	1140	31%
Cankuzo	Mishiha	7401	6704	697	10%
Cibitoke	Buganda	1330	1205	125	10%
Cibitoke	Bukinanyana	2686	2674	12	0%
Cibitoke	Mabayi	2563	3196	-633	-20%
Cibitoke	Mugina	1549	1463	86	6%
Cibitoke	Murwi	1545	1380	165	12%
Cibitoke	Rugombo	363	419	-56	-13%
Gitega	Bugendana	4046	3730	316	8%
Gitega	Bukirasazi	765	902	-138	-15%
Gitega	Buraza	2078	2335	-257	-11%
Gitega	Giheta	1539	1370	168	12%
Gitega	Gishubi	2630	2706	-76	-3%
Gitega	Gitega	2279	2215	64	3%
Gitega	Itaba	2879	2943	-64	-2%
Gitega	Makebuko	1904	2079	-175	-8%
Gitega	Mutaho	2396	2255	141	6%
Gitega	Nyanrusange	4082	3895	187	5%

Gitega	Ryansoro	2585	2656	-71	-3%
Karuzi	Bugenyuzi	4274	3896	378	10%
Karuzi	Buhiga	4185	3796	389	10%
Karuzi	Gihogazi	4234	3803	430	11%
Karuzi	Gitaramuka	6875	6295	580	9%
Karuzi	Mutumba	5024	4393	631	14%
Karuzi	Nyabikere	3927	3418	509	15%
Karuzi	Shombo	2282	2007	275	14%
Kayanza	Butaganzwa1	514	551	-37	-7%
Kayanza	Gahombo	387	458	-71	-15%
Kayanza	Gatara	489	561	-72	-13%
Kayanza	Kabarore	2019	2603	-584	-22%
Kayanza	Kayanza	500	584	-84	-14%
Kayanza	Matongo	1216	1278	-61	-5%
Kayanza	Muhanga	999	1053	-54	-5%
Kayanza	Muruta	1189	1750	-560	-32%
Kayanza	Rango	1262	1332	-69	-5%
Kirundo	Bugabira	1630	1669	-39	-2%
Kirundo	Busoni	3069	3302	-233	-7%
Kirundo	Bwambarangwe	1006	1117	-110	-10%
Kirundo	Gitobe	1362	1360	3	0%
Kirundo	Kirundo	1054	1229	-175	-14%
Kirundo	Ntega	2093	1867	226	12%
Kirundo	Vumbi	1967	1881	85	5%
Makamba	Kayogoro	7821	7367	454	6%
Makamba	Kibago	3348	3167	181	6%
Makamba	Lake Tanganyika	470	758	-287	-38%
Makamba	Mabanda	3741	3469	272	8%
Makamba	Makamba	11651	10848	803	7%
Makamba	Nyanza-Lac	5612	5766	-154	-3%
Makamba	Vugizo	2758	3014	-257	-9%
Muramvya	Bukeye	1541	1435	106	7%
Muramvya	Mbuye	788	797	-9	-1%
Muramvya	Muramvya	3110	3391	-281	-8%
Muramvya	Rutegama	2629	2504	124	5%
Muyinga	Buhinyuza	1990	1447	542	37%
Muyinga	Butihinda	2699	2696	3	0%
Muyinga	Gasorwe	1120	1061	58	6%
Muyinga	Giteranyi	1302	1432	-130	-9%
Muyinga	Muyinga	1724	1542	182	12%
Muyinga	Mwakiro	1187	1025	161	16%
Mwaro	Bisoro	6144	5778	365	6%
Mwaro	Gisozi	7470	7199	270	4%
Mwaro	Kayokwe	1649	1776	-127	-7%
Mwaro	Ndava	2111	2066	45	2%
Mwaro	Nyabihanga	659	696	-38	-5%
Mwaro	Rusaka	1479	1598	-119	-7%
Ngozi	Busiga	487	537	-50	-9%
Ngozi	Gashikanwa	1082	1041	42	4%
Ngozi	Kiremba	1622	1612	11	1%
Ngozi	Marangara	1047	971	76	8%
Ngozi	Mwumba	1016	1024	-8	-1%



Ngozi	Ngozi	499	541	-41	-8%
Ngozi	Nyamurenza	1097	1069	28	3%
Ngozi	Ruhororo	1565	1573	-8	-1%
Ngozi	Tangara	1271	1224	47	4%
Rutana	Bukemba	2439	1832	607	33%
Rutana	Giharo	4478	4537	-59	-1%
Rutana	Gitanga	1855	2041	-186	-9%
Rutana	Mpinga-Kayove	2683	2821	-138	-5%
Rutana	Musongati	2260	2509	-249	-10%
Rutana	Rutana	1973	2202	-229	-10%
Ruyigi	Butaganzwa2	5332	4955	378	8%
Ruyigi	Butezi	2294	2041	254	12%
Ruyigi	Bweru	3283	2882	400	14%
Ruyigi	Gisuru	6330	5227	1103	21%
Ruyigi	Kinyinya	3196	2839	357	13%
Ruyigi	Nyabitsinda	796	738	58	8%
Ruyigi	Ruyigi	2917	2715	202	7%
Total		316707	309086	7621	2%

MT (Metric tons): 1 MT is equivalent to 1,000 kilograms.

Change: refers to the relative difference and is calculated as (2025 prod – 2024 prod) divided by 2024 prod.

Suggested Citation: Ndoye, A., K. Dia, and M. Dia. 2025. AAgWa Crop Production Forecasts Brief Series: Burundi – Maize. AAgWa Crop Production Forecasts Brief Series, No. 255. Kigali: AKADEMIYA2063.

<https://doi.org/10.54067/acpf.255>