

# AaGwa Crop Production Forecasts Brief Series

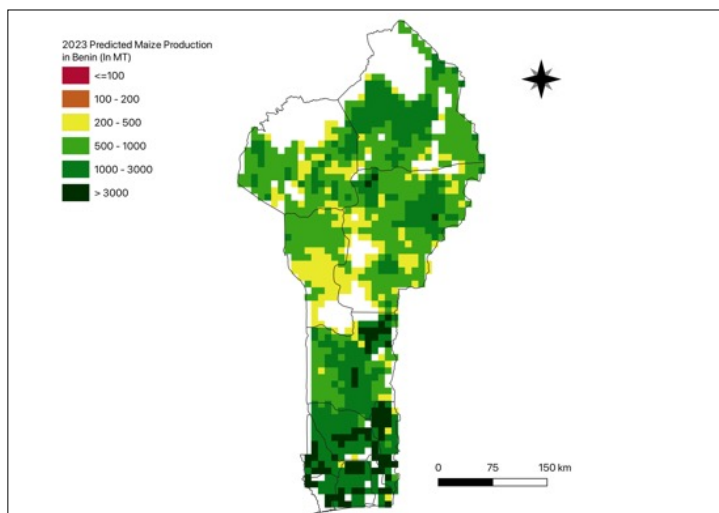
## Benin – Maize

Aissatou Ndoye\*, Mansour Dia \*\*, and Khadim Dia\*\*\*

No. 28, July 2023

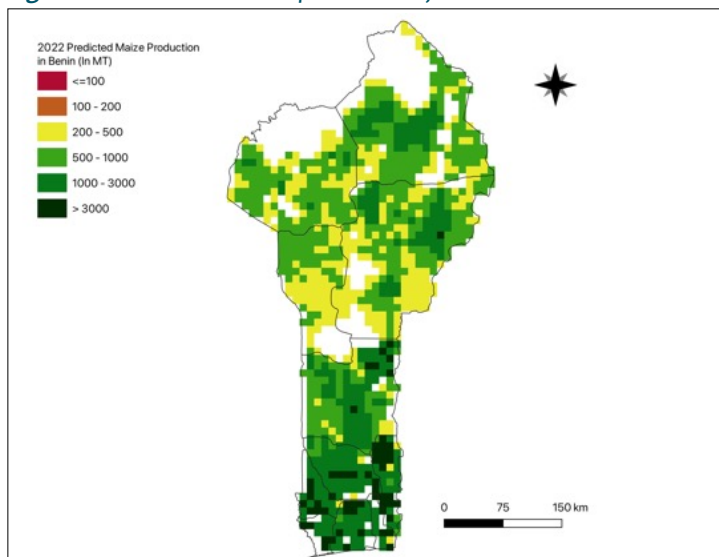
The crop production forecast brief series by AKADEMIYA2063's Africa Agriculture Watch (AAgWa) aims to provide more accurate and timely data on harvest and yields for nine major crops across nearly 50 African countries. The timeliness, wide availability, and easy access to this type of data will allow stakeholders across the value chain to better plan and execute policy and business actions more efficiently. The data published in the briefs are generated through the Africa Crop Production

**Figure 1.** Benin 2023 maize production forecast.



Data Source: Africa Agriculture Watch ([www.aagwa.org](http://www.aagwa.org)).

**Figure 2.** Benin 2022 maize production forecast.



Data Source: Africa Agriculture Watch ([www.aagwa.org](http://www.aagwa.org)).

(AfCP) model, an Artificial Intelligence (AI-based) model applied to remotely sensed geo-biophysical data to produce estimates at pixel as well as administrative levels as early as the beginning of every growing season. In Brief 28, we provide forecasts on maize production in Benin.

In 2023, maize production in Benin is projected to reach 1,441,584 metric tons, which corresponds to an 18% increase from 2022 production levels. However, the communes of Kétou (Plateau), Ouèssè (Collines), Kandi (Alibori), Banikoara (Alibori), and Nikki (Borgou) are expected to produce the most significant volumes of maize, with production levels estimated at 104,688 MT, 78,593 MT, 61,988 MT, 49,878 MT, and 48,421 MT respectively. In comparison, lower production values are observed in communes such as Porto-Novo (Ouémé), Sô-Ava (Atlantique), Aguégoués (Ouémé), Djougou Urbain (Donga), and Ifangni (Plateau), with a production of 261 MT, 1,157 MT, 1,495 MT, 2,302 MT, and 3,475 MT, respectively.

Compared to 2022, the most significant maize production increases in 2023 are expected to occur in Kétou (Plateau), Kandi (Alibori), Ouèssè (Collines), Banikoara (Alibori), and Nikki (Borgou), with differences reaching 22,537 MT, 13,227 MT, 13,173 MT, 11,551 MT, and 8,536 MT, respectively. These correspond to changes of, respectively, 22, 21, 17, 23, and 18 percent.

\*Associate Scientist, Department of Data Management, Digital Products, and Technology, AKADEMIYA2063

\*\* Associate Scientist, Department of Data Management, Digital Products, and Technology, AKADEMIYA2063

\*\*\*Senior Associate Scientist, Department of Data Management, Digital Products, and Technology, AKADEMIYA2063



## Annex – 2023 Benin Maize Production Forecast at District level

| Departments | Communes       | 2023 Production (MT) | 2022 Production (MT) | Difference (MT) | Change (%) |
|-------------|----------------|----------------------|----------------------|-----------------|------------|
| Alibori     | Banikoara      | 49878                | 38326                | 11551           | 23%        |
| Alibori     | Gogounou       | 39628                | 32406                | 7222            | 18%        |
| Alibori     | Kandi          | 61988                | 48761                | 13227           | 21%        |
| Alibori     | Karimama       | 11366                | 7379                 | 3987            | 35%        |
| Alibori     | Malanville     | 22687                | 15887                | 6800            | 30%        |
| Alibori     | Segbana        | 29742                | 23137                | 6606            | 22%        |
| Atakora     | Boukoubmé      | 6949                 | 5743                 | 1205            | 17%        |
| Atakora     | Cobly          | 8836                 | 6510                 | 2326            | 26%        |
| Atakora     | Kérou          | 25787                | 20238                | 5549            | 22%        |
| Atakora     | Kouandé        | 27967                | 23507                | 4460            | 16%        |
| Atakora     | Matéri         | 17360                | 12936                | 4423            | 25%        |
| Atakora     | Natitingou     | 6527                 | 5572                 | 955             | 15%        |
| Atakora     | Péhunco        | 16496                | 13485                | 3011            | 18%        |
| Atakora     | Tanguiéta      | 10781                | 8083                 | 2698            | 25%        |
| Atakora     | Toucountouna   | 8580                 | 6688                 | 1892            | 22%        |
| Atlantique  | Abomey-Calavi  | 12824                | 11328                | 1496            | 12%        |
| Atlantique  | Allada         | 10125                | 8589                 | 1536            | 15%        |
| Atlantique  | Kpomassè       | 10867                | 9085                 | 1782            | 16%        |
| Atlantique  | Ouidah         | 8254                 | 6848                 | 1406            | 17%        |
| Atlantique  | Sô-Ava         | 1157                 | 1032                 | 125             | 11%        |
| Atlantique  | Toffo          | 19527                | 16435                | 3092            | 16%        |
| Atlantique  | Tori-Bossito   | 9517                 | 8241                 | 1275            | 13%        |
| Atlantique  | Zè             | 24654                | 21261                | 3393            | 14%        |
| Borgou      | Bembéréké      | 24922                | 21322                | 3600            | 14%        |
| Borgou      | Kalalé         | 37182                | 29647                | 7536            | 20%        |
| Borgou      | N'Dali         | 25079                | 21872                | 3207            | 13%        |
| Borgou      | Nikki          | 48421                | 39886                | 8536            | 18%        |
| Borgou      | Parakou        | 10180                | 8501                 | 1679            | 16%        |
| Borgou      | Pèrèrè         | 14255                | 12390                | 1866            | 13%        |
| Borgou      | Sinendé        | 33972                | 27514                | 6458            | 19%        |
| Borgou      | Tchaourou      | 32579                | 29479                | 3100            | 10%        |
| Collines    | Bantè          | 29116                | 26241                | 2875            | 10%        |
| Collines    | Dassa-Zoumè    | 36379                | 29344                | 7035            | 19%        |
| Collines    | Glazoué        | 36879                | 30201                | 6677            | 18%        |
| Collines    | Ouèssè         | 78593                | 65420                | 13173           | 17%        |
| Collines    | Savalou        | 19118                | 16742                | 2377            | 12%        |
| Collines    | Savè           | 18635                | 15410                | 3225            | 17%        |
| Donga       | Bassila        | 16355                | 16201                | 154             | 1%         |
| Donga       | Copargo        | 8899                 | 7726                 | 1173            | 13%        |
| Donga       | Djougou Rural  | 27061                | 24301                | 2760            | 10%        |
| Donga       | Djougou Urbain | 2302                 | 2020                 | 282             | 12%        |
| Donga       | Ouaké          | 5504                 | 4850                 | 655             | 12%        |
| Kouffo      | Aplahoué       | 39206                | 30982                | 8225            | 21%        |



| Departments  | Communes     | 2023 Production (MT) | 2022 Production (MT) | Difference (MT) | Change (%) |
|--------------|--------------|----------------------|----------------------|-----------------|------------|
| Kouffo       | Djakotomey   | 3836                 | 3089                 | 747             | 19%        |
| Kouffo       | Dogbo        | 22683                | 18503                | 4180            | 18%        |
| Kouffo       | Klouékanmè   | 12139                | 9951                 | 2188            | 18%        |
| Kouffo       | Lalo         | 9661                 | 7748                 | 1914            | 20%        |
| Kouffo       | Toviklin     | 16084                | 12741                | 3343            | 21%        |
| Mono         | Athiémé      | 12715                | 10285                | 2430            | 19%        |
| Mono         | Bopa         | 12537                | 10438                | 2098            | 17%        |
| Mono         | Comè         | 9384                 | 7422                 | 1963            | 21%        |
| Mono         | Houéyogbé    | 7171                 | 5905                 | 1266            | 18%        |
| Ouémé        | Adjohoun     | 4606                 | 3891                 | 715             | 16%        |
| Ouémé        | Aguégués     | 1495                 | 1285                 | 211             | 14%        |
| Ouémé        | Avrankou     | 3709                 | 3252                 | 457             | 12%        |
| Ouémé        | Bonou        | 21880                | 17591                | 4289            | 20%        |
| Ouémé        | Dangbo       | 8100                 | 6797                 | 1303            | 16%        |
| Ouémé        | Porto-Novo   | 261                  | 288                  | -27             | -10%       |
| Ouémé        | Sèmè-Kpodji  | 6763                 | 5648                 | 1115            | 16%        |
| Plateau      | Adja-Ouèrè   | 27011                | 21291                | 5720            | 21%        |
| Plateau      | Ifangni      | 3475                 | 1733                 | 1743            | 50%        |
| Plateau      | Kétou        | 104688               | 82151                | 22537           | 22%        |
| Plateau      | Pobè         | 15303                | 12429                | 2875            | 19%        |
| Plateau      | Sakété       | 15719                | 12669                | 3050            | 19%        |
| Zou          | Abomey       | 11604                | 9205                 | 2399            | 21%        |
| Zou          | Agbangnizoun | 5078                 | 4210                 | 867             | 17%        |
| Zou          | Bohicon      | 16706                | 13477                | 3228            | 19%        |
| Zou          | Covè         | 13600                | 10968                | 2631            | 19%        |
| Zou          | Djidja       | 37086                | 29990                | 7096            | 19%        |
| Zou          | Ouinhi       | 12746                | 10045                | 2700            | 21%        |
| Zou          | Za-Kpota     | 18264                | 14728                | 3536            | 19%        |
| Zou          | Zagnanado    | 12321                | 9694                 | 2627            | 21%        |
| Zou          | Zogbodomey   | 8824                 | 7528                 | 1296            | 15%        |
| <b>Total</b> |              | <b>1441584</b>       | <b>1176476</b>       | <b>265108</b>   | <b>18%</b> |

**MT (Metric tons):** 1 MT is equivalent to 1,000 kilograms.

**Change:** refers to the relative difference and is calculated as (2023 prod – 2022 prod) divided by 2022 prod.

**Suggested Citation:** Ndoye, A., M. Dia, and K. Dia. 2023. AAgWa Crop Production Forecasts Brief Series: Benin – Maize. AAgWa Crop Production Forecasts Brief Series, No. 28. Kigali, Rwanda: AKADEMIYA2063. <https://doi.org/10.54067/acpf.28>