

AAGWa Crop Production

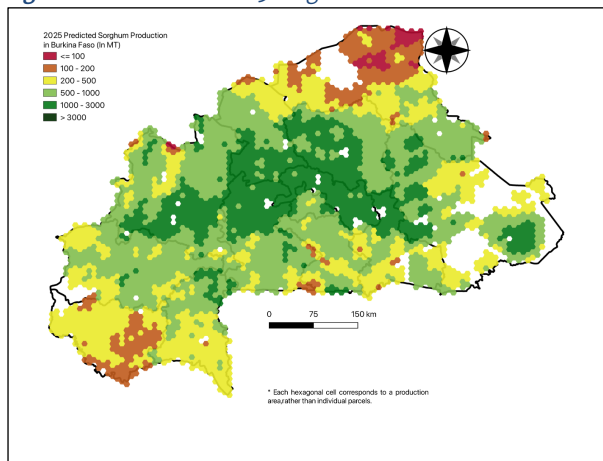
Forecasts Brief Series Burkina Faso – Sorghum

Mansour Dia*, Aïssatou Ndoye*, and Khadim Dia**

No. 304, October 2025

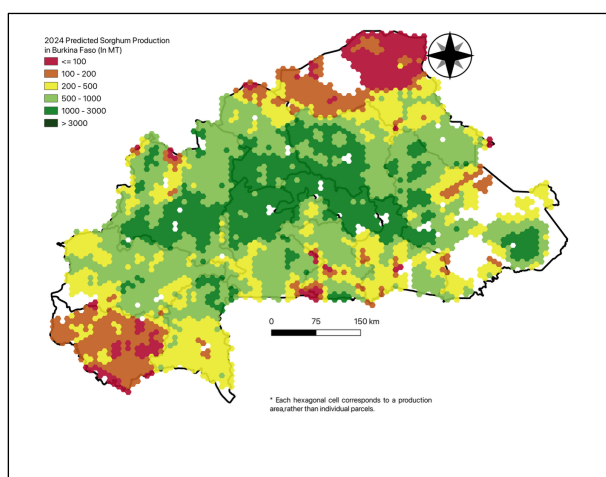
The crop production forecast brief series by AKADEMIYA2063's Africa Agriculture Watch (AAGWa) aims to provide more accurate and timely data on harvest and yields for 11 major crops across nearly 50

Figure 1. Burkina Faso 2025 Sorghum Production Forecast.



Data source: Africa Agriculture Watch (www.aagwa.org).

Figure 2. Burkina Faso 2024 Sorghum Production Forecast.



Data source: Africa Agriculture Watch (www.aagwa.org).

African countries. The timeliness, wide availability, and easy access to this type of data will allow stakeholders across the value chain to better plan and execute policy and business actions more efficiently. The data published in the briefs are generated through the Africa Crop Production (AfCP) model, an Artificial Intelligence (AI-based) model applied to remotely sensed geo-biophysical data to produce estimates at pixel as well as administrative levels as early as the beginning of every growing season. In Brief 304, we provide forecasts on Sorghum production in Burkina Faso.

In 2025, sorghum production in Burkina Faso is projected to reach 1,902,064 metric tons (MT), indicating a 5% increase over 2024 production levels. The highest sorghum producers are expected to be Sanmatenga (Centre-Nord), Gnagna (Est), Mouhoun (Boucle du Mouhoun), Houet (Haut-Bassins), and Sanguié (Centre-Ouest), with production levels estimated at 110,560 MT, 99,146 MT, 95,290 MT, 84,062 MT, and 73,637 MT. In contrast, lower production values are observed in Oudalan (Sahel), Loroum (Nord), Nounbiel (Sud-Ouest), Kompienga (Est), and Léraba (Cascades) with production of 15,334 MT, 12,879 MT, 12,172 MT, 8,740 MT, and 3,668 MT, respectively.

Compared to 2024, the most significant sorghum production increases in 2025 are expected in provinces such as Comoé (Cascades), Oudalan (Sahel), Poni (Sud-Ouest), Soum (Sahel), and Séno (Sahel), with

differences of 14,400 MT, 8,569 MT, 6,056 MT, 5,676 MT, and 4,799 MT, respectively. These correspond to changes of 60%, 127%, 22%, 50%, and 16%.

*Associate Scientist, Department of Data Intelligence and Governance, AKADEMIYA2063
**Senior Associate Scientist, Department of Data Intelligence and Governance, AKADEMIYA2063

Annex – 2025 Burkina Faso Sorghum Production Forecast at District Level

Regions	Provinces	2025 Production (MT)	2024 Production (MT)	Difference (MT)	Change (%)
Boucle du Mouhoun	Balé	39940	39345	596	2%
Boucle du Mouhoun	Banwa	48994	49846	-853	-2%
Boucle du Mouhoun	Kossi	48650	47136	1514	3%
Boucle du Mouhoun	Mouhoun	95290	97183	-1893	-2%
Boucle du Mouhoun	Nayala	38382	37871	511	1%
Boucle du Mouhoun	Sourou	57090	56423	667	1%
Cascades	Comoé	38476	24076	14400	60%
Cascades	Léraba	3668	2123	1544	73%
Centre	Kadiogo	22047	21265	782	4%
Centre-Est	Boulgou	29654	25004	4650	19%
Centre-Est	Koulpélogo	20879	19414	1465	8%
Centre-Est	Kouritenga	44328	44109	219	0%
Centre-Nord	Bam	51100	49576	1524	3%
Centre-Nord	Namentenga	53161	51975	1187	2%
Centre-Nord	Sanmatenga	110560	108426	2134	2%
Centre-Ouest	Boulkiemdé	64420	63779	641	1%
Centre-Ouest	Sanguié	73637	71866	1771	2%
Centre-Ouest	Sissili	41747	38262	3485	9%
Centre-Ouest	Ziro	48133	47693	440	1%
Centre-Sud	Bazèga	32562	31334	1228	4%
Centre-Sud	Nahouri	22844	21501	1343	6%
Centre-Sud	Zoundwéogo	24921	24213	708	3%
Est	Gnagna	99146	98521	626	1%
Est	Gourma	52680	51265	1415	3%
Est	Komandjoari	23195	20296	2899	14%
Est	Kompienga	8740	7708	1033	13%
Est	Tapoa	66042	65337	705	1%
Haut-Bassins	Houet	84062	80085	3977	5%
Haut-Bassins	KénéDougou	35683	33561	2122	6%
Haut-Bassins	Tuy	40505	39166	1338	3%
Nord	Loroum	12879	9720	3159	32%
Nord	Passoré	53836	52685	1151	2%
Nord	Yatenga	57725	55212	2514	5%
Nord	Zoncoma	25018	24702	316	1%
Plateau-Central	Ganzourgou	53345	52454	892	2%
Plateau-Central	Kourwéogo	27627	27269	358	1%
Plateau-Central	Oubritenga	40270	39899	371	1%
Sahel	Oudalan	15334	6765	8569	127%
Sahel	Séno	35173	30374	4799	16%
Sahel	Soum	17069	11393	5676	50%
Sahel	Yagha	42029	39138	2891	7%
Sud-Ouest	Bougouriba	25584	24522	1061	4%
Sud-Ouest	Ioba	29653	30027	-374	-1%
Sud-Ouest	Noumbiel	12172	8406	3766	45%
Sud-Ouest	Poni	33814	27758	6056	22%
Total		1902064	1808683	93383	5%

MT (Metric tons): 1 MT is equivalent to 1,000 kilograms.

Change: refers to the relative difference and is calculated as (2025 prod – 2024 prod) divided by 2024 prod.



Suggested Citation: Dia, M., A. Ndoye, and K. Dia. 2025. AAgWa Crop Production Forecasts Brief Series: Burkina Faso – Sorghum. AAgWa Crop Production Forecasts Brief Series, No. 304. Kigali: AKADEMIYA2063.
<https://doi.org/10.54067/acpf.304>