

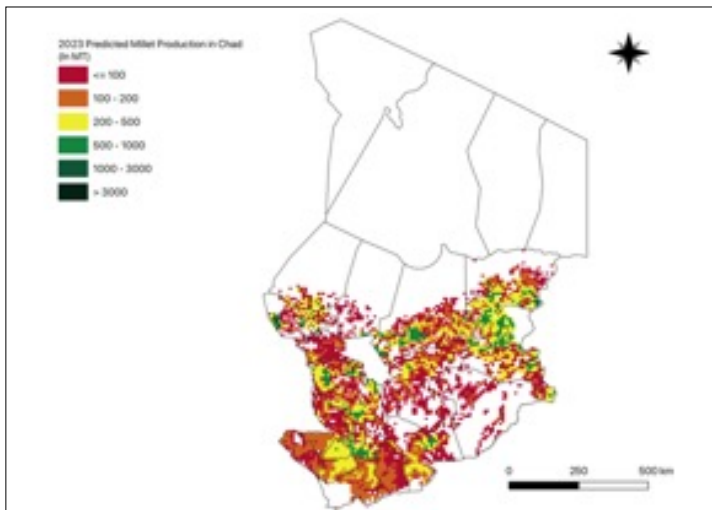
AAGWa Crop Production Forecasts Brief Series Chad – Millet

Aissatou Ndoye*, Mansour Dia **, and Khadim Dia***

No. 35, August 2023

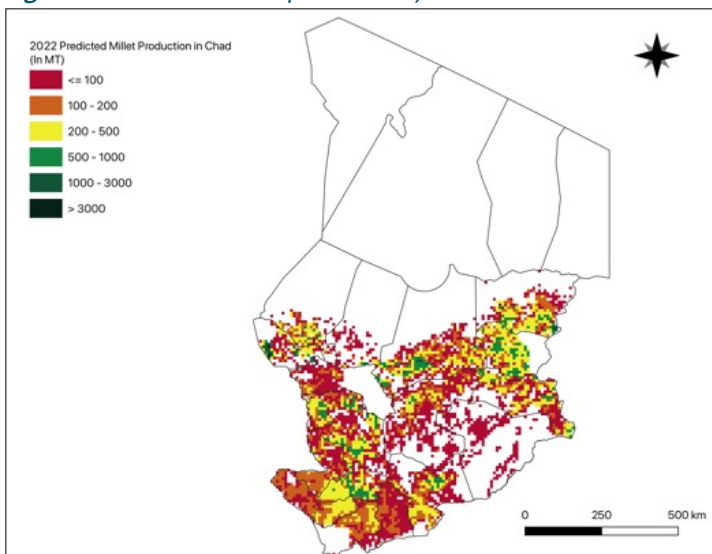
The crop production forecast brief series by AKADEMIYA2063's Africa Agriculture Watch (AAGWa) aims to provide more accurate and timely data on harvest and yields for nine major crops across nearly 50 African countries. The timeliness, wide availability, and easy access to this type of data will allow stakeholders across the value chain to better plan and execute policy and business actions more efficiently. The data published in the briefs are generated through the Africa Crop Production (AfCP) model, an Artificial Intelligence (AI-based) model applied to

Figure 1. Chad 2023 millet production forecast.



Data Source: Africa Agriculture Watch (www.aagwa.org).

Figure 2. Chad 2022 millet production forecast.



Data Source: Africa Agriculture Watch (www.aagwa.org).

remotely sensed geo-biophysical data to produce estimates at pixel as well as administrative levels as early as the beginning of every growing season. In Brief 35, we provide forecasts on millet production in Chad.

In 2023, millet production in Chad is projected to reach 810,242 metric tons (MT), corresponding to a 2% increase over 2022 production levels. Regions in the southern part of the country are expected to produce the most significant volumes of millet, particularly in Ouara (Ouaddaï), Baguirmi (Chari-Baguirmi), Batha Oues (Batha), Sila, and Tandjilé Est (Tandjilé) with production levels estimated at 70,976 MT, 63,750 MT, 58,813 MT, 44,687 MT, and 41,558 MT, respectively. In contrast, lower production values are observed in Assounga (Ouaddaï), Monts de Lam (Logone Oriental), N'Djamena (Ville de N'Djamena), Dababa (Hadjer-Lamis), Mandoul Occidental (Mandoul), and Ngourkosso (Logone Occidental), with production values reaching only 211 MT, 212 MT, 753 MT, 1,156 MT, 2,842 MT, and 3,873 MT, respectively.

Regions such as Ouara (Ouaddaï), Djourf Al Ahmar (Sila), Sila, Barh Azoum (Salamat), and Djourf Al Ahmar (Ouaddaï) are expected to have the most significant increases of millet production volumes in 2023 with differences of, respectively, 7,762 MT, 5,094 MT, 5,005 MT, 2,535 MT, and 2,460 MT. They similarly correspond to changes of, respectively, 12%, 24%, 13%, 63%, and 15%.


*Associate Scientist, Department of Data Management, Digital Products, and Technology, AKADEMIYA2063

** Associate Scientist, Department of Data Management, Digital Products, and Technology, AKADEMIYA2063

***Senior Associate Scientist, Department of Data Management, Digital Products, and Technology, AKADEMIYA2063

Annex – 2023 Chad Millet Production Forecast at District level

Regions	Departments	2023 Production (MT)	2022 Production (MT)	Difference (MT)	Change (%)
Barh el Ghazel	Barh El Gazel	6647	8865	-2218	-25%
Batha	Batha Est	36683	35565	1118	3%
Batha	Batha Oues	58813	57011	1803	3%
Batha	Fitri	5581	6200	-619	-10%
Chari-Baguirmi	Baguirmi	63750	63436	314	0%
Chari-Baguirmi	Loug Chari	33653	33557	96	0%
Chari-Baguirmi	N'Djamena	10152	9671	481	5%
Guéra	Barh Signaka	11496	10140	1357	13%
Guéra	Bitkine	16137	15891	247	2%
Guéra	Guéra	14728	13332	1396	10%
Guéra	Mangalmé	11874	9590	2284	24%
Hadjer-Lamis	Dababa	1156	1230	-74	-6%
Hadjer-Lamis	Dagana	5850	6809	-959	-14%
Hadjer-Lamis	Haraze Al Biar	5502	5614	-112	-2%
Kanem	Kanem	18210	20105	-1895	-9%
Kanem	Nokou	4990	5857	-867	-15%
Lac	Mamdi	40019	44094	-4074	-9%
Lac	Wayi	7693	8227	-534	-6%
Logone Occidental	Dodjé	5321	5468	-148	-3%
Logone Occidental	Lac Wey	10298	10758	-461	-4%
Logone Occidental	Ngourkosso	3873	3958	-85	-2%
Logone Oriental	Lanya	4825	4676	149	3%
Logone Oriental	Monts de Lam	212	159	53	33%
Logone Oriental	Nya Pendé	8690	7361	1328	18%
Logone Oriental	Pendé	11398	10994	404	4%
Mandoul	Barh Sara	7988	7184	804	11%
Mandoul	Mandoul Occidental	2842	2406	436	18%
Mandoul	Mandoul Oriental	7912	7427	485	7%
Mayo-Kebbi Est	Kabbia	6341	6451	-109	-2%
Mayo-Kebbi Est	Mayo-Boneye	16045	17159	-1115	-6%
Mayo-Kebbi Est	Mont Illi	4615	4909	-294	-6%
Mayo-Kebbi Ouest	Lac Léré	4256	4616	-360	-8%
Mayo-Kebbi Ouest	Mayo-Dallah	9301	10374	-1072	-10%
Moyen-Chari	Barh Köh	19888	20116	-228	-1%
Moyen-Chari	Grande Sido	6407	6540	-133	-2%
Moyen-Chari	Lac Iro	23694	23658	37	0%
Ouaddaï	Assoungaha	211	151	60	40%
Ouaddaï	Djourf Al Ahmar	19297	16837	2460	15%
Ouaddaï	Ouara	70976	63215	7762	12%
Salamat	Aboudeïa	4553	2629	1924	73%
Salamat	Barh Azoum	6552	4017	2535	63%
Salamat	Haraze Mangueigne	3977	2724	1253	46%
Sila	Djourf Al Ahmar	26300	21207	5094	24%
Sila	Sila	44687	39682	5005	13%
Tandjilé	Béré	5691	5916	-225	-4%
Tandjilé	Tandjilé Est	41558	41737	-179	0%



Tandjilé	Tandjilé Ouest	16116	17052	-936	-5%
Ville de N'Djamena	N'Djamena	753	762	-9	-1%
Wadi Fira	Biltine	25005	26238	-1233	-5%
Wadi Fira	Dar Tama	32407	33128	-721	-2%
Wadi Fira	Kobé	5319	7008	-1688	-24%
Total		810242	791707	18535	2%

MT (Metric tons): 1 MT is equivalent to 1,000 kilograms.

Change: refers to the relative difference and is calculated as (2023 prod – 2022 prod) divided by 2022 prod.

Suggested Citation: Ndoye, A., M. Dia, and K. Dia. 2023. AAgWa Crop Production Forecasts Brief Series: Chad – Millet. AAgWa Crop Production Forecasts Brief Series, No. 35. Kigali: AKADEMIYA2063. <https://doi.org/10.54067/acpf.35>