

AAGWa Crop Production Forecasts Brief Series Nigeria - Millet

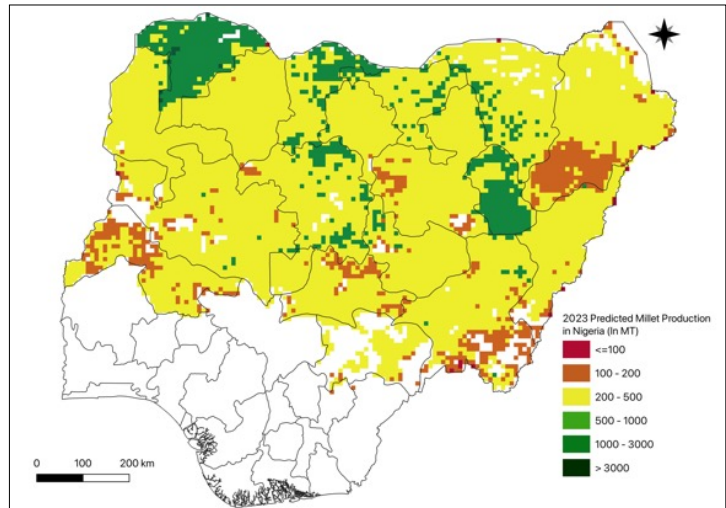
Aissatou Ndoye*, Mansour Dia **, and Khadim Dia***

No. 37, August 2023

The crop production forecast brief series by AKADEMIYA2063's Africa Agriculture Watch (AAGWa) aims to provide more accurate and timely data on harvest and yields for nine major crops across nearly 50 African countries. The timeliness, wide availability, and easy access to this type of data will allow stakeholders across the value chain to better plan and execute policy and business actions more efficiently. The data published in the briefs are generated through the Africa Crop Production (AfCP) model, an Artificial Intelligence (AI- based) model applied to remotely sensed geo- biophysical data to produce estimates at pixel as well as administrative levels as early as the beginning of every growing season. In Brief 37, we provide forecasts on millet production in Nigeria.

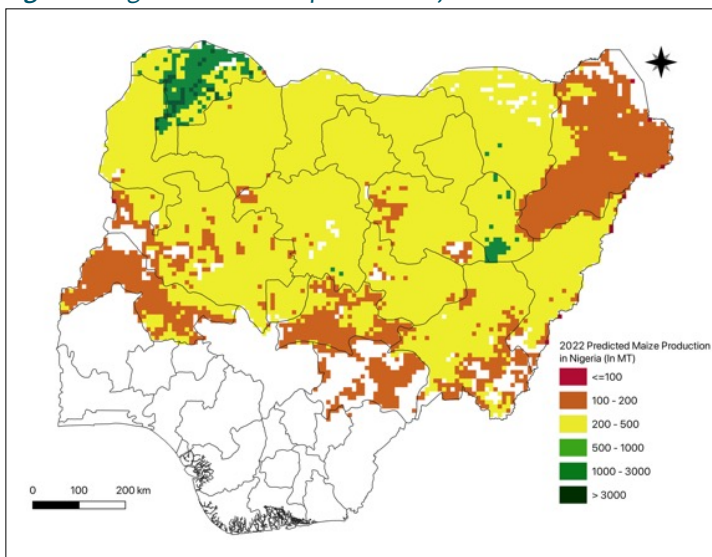
In 2023, millet production in Nigeria is projected to reach 2,641,044 metric tons (MT), corresponding to a 19% increase over 2022 production levels. States in the Northern and Eastern parts of the country are expected to produce the most significant volumes of millet, particularly in Fune (Yobe), Karim Lamido (Taraba), Gudu (Sokoto), Bali (Taraba), and Gassol (Taraba), with production levels estimated at 28,710 MT, 26,252 MT, 25,210 MT, 24,751 MT, and 23,981 MT, respectively. In

Figure 1. Nigeria 2023 millet production forecast.



Data Source: Africa Agriculture Watch (www.aagwa.org).

Figure 2. Nigeria 2022 millet production forecast.



Data Source: Africa Agriculture Watch (www.aagwa.org).

contrast, lower production values are observed in Irepo (Oyo), Izzi (Ebonyi), Ankpa (Kogi), Ohimini (Benue), Ebonyi, and Ikole (Ekiti), with production values of, respectively, 194 MT, 203 MT, 204 MT, 206 MT, 207 MT, and 212 MT.

The most significant increases of millet production volumes in 2023 are expected to occur in states such as Jakusko (Yobe), Baruten (Kwara), Fune (Yobe), Gudu (Sokoto), and Tarmuwa (Yobe), with differences of, respectively, 6,808 MT, 6,534 MT, 6,272 MT, 5,927 MT, and 5,033 MT, respectively. These correspond to changes of, respectively 41%, 40%, 28%, 31%, and 30%.

*Associate Scientist, Department of Data Management, Digital Products, and Technology, AKADEMIYA2063


** Associate Scientist, Department of Data Management, Digital Products, and Technology, AKADEMIYA2063

***Senior Associate Scientist, Department of Data Management, Digital Products, and Technology, AKADEMIYA2063



Annex – 2023 Nigeria Millet Production Forecast at District level

States	Cities	2023 Production (MT)	2022 Production (MT)	Difference (MT)	Change (%)
Adamawa	Demsa	10826	8974	1851	21%
Adamawa	Fufore	16622	13832	2790	20%
Adamawa	Ganye	5981	5289	692	13%
Adamawa	Girie	8586	7383	1203	16%
Adamawa	Gombi	5310	4381	929	21%
Adamawa	Guyuk	3450	2864	586	20%
Adamawa	Hong	13658	11794	1864	16%
Adamawa	Jada	5918	5056	861	17%
Adamawa	Lamurde	6635	5410	1225	23%
Adamawa	Madagali	2177	1924	254	13%
Adamawa	Maiha	2422	2090	333	16%
Adamawa	Mayo-Belwa	9353	7907	1446	18%
Adamawa	Michika	3715	3242	473	15%
Adamawa	Mubi North	2792	2504	289	12%
Adamawa	Mubi South	346	401	-56	-14%
Adamawa	Numan	4250	3459	792	23%
Adamawa	Shelleng	7983	6735	1248	19%
Adamawa	Song	19598	16573	3026	18%
Adamawa	Teungo	6502	5781	720	12%
Adamawa	Yola North	696	568	128	23%
Adamawa	Yola South	2070	1691	379	22%
Bauchi	Alkaleri	18350	15697	2653	17%
Bauchi	Bauchi	12660	11379	1281	11%
Bauchi	Bogoro	2132	1884	248	13%
Bauchi	Damban	5794	4806	989	21%
Bauchi	Darazo	9921	8712	1209	14%
Bauchi	Dass	2271	2062	209	10%
Bauchi	Gamawa	13501	10445	3056	29%
Bauchi	Ganjuwa	19018	17088	1930	11%
Bauchi	Giade	2367	2052	315	15%
Bauchi	Itas/Gadua	7842	6583	1258	19%
Bauchi	Jama'are	1569	1391	178	13%
Bauchi	Katagum	10670	9349	1321	14%
Bauchi	Kirfi	9704	8434	1270	15%
Bauchi	Misau	4227	3636	591	16%
Bauchi	Ningi	17500	16220	1280	8%
Bauchi	Shira	3819	3377	442	13%
Bauchi	Tafawa-Balewa	7909	7103	806	11%
Bauchi	Toro	20156	19090	1065	6%
Bauchi	Warji	2303	2033	270	13%
Bauchi	Zaki	8037	6102	1936	32%
Benue	Ado	993	826	167	20%
Benue	Agatu	2387	1949	438	22%
Benue	Apa	1043	849	194	23%
Benue	Bukuru	3214	2349	865	37%




Benue	Gboko	3407	2469	939	38%
Benue	Guma	2145	1726	419	24%
Benue	Gwer East	638	483	154	32%
Benue	Gwer West	217	180	38	21%
Benue	Katsina-Ala	3082	2364	718	30%
Benue	Konshisha	2289	1690	599	35%
Benue	Kwande	936	794	142	18%
Benue	Logo	2190	1713	477	28%
Benue	Makurdi	861	715	147	21%
Benue	Obi	636	505	131	26%
Benue	Ohimini	206	155	52	33%
Benue	Oju	607	487	120	25%
Benue	Okpokwu	217	171	46	27%
Benue	Otukpo	1070	845	224	27%
Benue	Tarka	1092	836	256	31%
Benue	Ukum	3726	2992	734	25%
Benue	Ushongo	2106	1595	511	32%
Benue	Vande Ikya	1488	1146	342	30%
Borno	Abadam	3316	2266	1050	46%
Borno	Askira/Uba	6257	5703	554	10%
Borno	Bama	11564	9172	2392	26%
Borno	Bayo	2672	2350	322	14%
Borno	Biu	7337	6945	392	6%
Borno	Chibok	2712	2544	168	7%
Borno	Dambo	15345	14475	870	6%
Borno	Dikwa	5147	3812	1335	35%
Borno	Gubio	7247	5503	1744	32%
Borno	Guzamala	6766	4816	1950	40%
Borno	Gwoza	6014	5397	617	11%
Borno	Hawul	4927	4540	387	9%
Borno	Jere	2399	1827	572	31%
Borno	Kaga	8070	6861	1209	18%
Borno	Kala/Balge	2775	2026	749	37%
Borno	Konduga	16868	13791	3077	22%
Borno	Kukawa	4498	3169	1329	42%
Borno	Kwaya Kusar	1602	1476	126	9%
Borno	Lake Chad	2619	1786	833	47%
Borno	Mafa	8341	6265	2076	33%
Borno	Magumeri	14615	11450	3165	28%
Borno	Maiduguri	231	169	62	37%
Borno	Marte	6011	4416	1595	36%
Borno	Mobbar	9763	7014	2749	39%
Borno	Monguno	3977	2894	1083	37%
Borno	Ngala	2383	1675	708	42%
Borno	Nganzai	7650	5655	1996	35%
Borno	Shani	3295	2857	438	15%

Cross River	Yala	409	330	79	24%
Ebonyi	Ebonyi	207	175	32	18%
Ebonyi	Izzi	203	166	38	23%
Ebonyi	Ohaukwu	398	349	49	14%
Ekiti	Ikole	212	160	52	33%
Federal Capital Territory	Abaji	2478	2100	378	18%
Federal Capital Territory	Abuja	6146	5517	628	11%
Federal Capital Territory	Bwari	3901	3425	476	14%
Federal Capital Territory	Gwagwalada	3992	3439	553	16%
Federal Capital Territory	Kuje	4868	4336	532	12%
Federal Capital Territory	Kwali	4470	3791	679	18%
Gombe	Akko	18596	14614	3982	27%
Gombe	Balanga	10171	8113	2058	25%
Gombe	Billiri	7330	5781	1549	27%
Gombe	Dukku	20516	17031	3485	20%
Gombe	Funakaye	8954	7197	1757	24%
Gombe	Kaltungo	7057	5700	1357	24%
Gombe	Kwami	11444	9016	2428	27%
Gombe	Nafada	11444	9139	2305	25%
Gombe	Shomgom	8911	6775	2136	32%
Gombe	Yamaltu/Deba	12114	9597	2517	26%
Jigawa	Auyo	4090	3272	818	25%
Jigawa	Babura	6129	4599	1530	33%
Jigawa	Biriniwa	8748	6540	2208	34%
Jigawa	Birnin Kudu	7695	6504	1191	18%
Jigawa	Buji	3191	2650	541	20%
Jigawa	Dutse	5227	4352	876	20%
Jigawa	Gagarawa	3673	2791	883	32%
Jigawa	Garki	5983	4712	1270	27%
Jigawa	Gumel	1407	1051	356	34%
Jigawa	Guri	5137	3580	1558	44%
Jigawa	Gwaram	10068	8762	1306	15%
Jigawa	Gwiwa	3053	2153	901	42%
Jigawa	Hadejia	526	429	97	23%
Jigawa	Jahun	6124	4887	1237	25%
Jigawa	Kafin Hausa	6799	5336	1463	27%
Jigawa	Kaugama	4877	3750	1126	30%
Jigawa	Kazaure	2815	2098	717	34%
Jigawa	Kiri Kasama	4868	3611	1257	35%
Jigawa	Kiyawa	6099	4985	1115	22%
Jigawa	Maigatari	5980	4501	1479	33%
Jigawa	Malam Maduri	3811	3026	785	26%
Jigawa	Miga	2843	2201	642	29%


Jigawa	Ringim	5274	4101	1173	29%
Jigawa	Roni	1015	720	295	41%
Jigawa	Sule Tankarkar	7804	5951	1854	31%
Jigawa	Taura	4609	3605	1004	28%
Jigawa	Yankwashi	3059	2214	845	38%
Kaduna	Birnin Gwari	21464	19226	2238	12%
Kaduna	Chikun	20173	17880	2294	13%
Kaduna	Giwa	12059	10090	1970	20%
Kaduna	Igabi	18248	15803	2444	15%
Kaduna	Ikara	6030	4829	1201	25%
Kaduna	Jaba	3298	2744	553	20%
Kaduna	Jema'a	8440	7422	1018	14%
Kaduna	Kachia	14697	13282	1415	11%
Kaduna	Kaduna North	787	687	99	14%
Kaduna	Kagarko	10996	9362	1634	17%
Kaduna	Kajuru	8548	7538	1009	13%
Kaduna	Kaura	2560	2223	337	15%
Kaduna	Kauru	9510	8633	876	10%
Kaduna	Kubau	13391	11705	1686	14%
Kaduna	Kudan	3264	2581	684	26%
Kaduna	Lere	13026	11188	1838	16%
Kaduna	Makarfi	2711	2168	542	25%
Kaduna	Sabon Gari	1683	1305	378	29%
Kaduna	Sanga	6064	5332	731	14%
Kaduna	Soba	11357	9690	1667	17%
Kaduna	Zangon Kataf	11634	10132	1502	15%
Kaduna	Zaria	1780	1393	387	28%
Kano	Ajingi	3266	2691	574	21%
Kano	Albasu	2378	1943	435	22%
Kano	Bagwai	2341	2011	330	16%
Kano	Bebeji	4600	3917	683	17%
Kano	Bichi	3292	2737	555	20%
Kano	Bunkure	3022	2589	433	17%
Kano	Dala	437	377	60	16%
Kano	Dambatta	4147	3140	1008	32%
Kano	Dawakin Kudu	1901	1603	298	19%
Kano	Dawakin Tofa	3289	2803	486	17%
Kano	Doguwa	5441	4960	481	10%
Kano	Gabasawa	3726	3050	676	22%
Kano	Garko	1418	1188	230	19%
Kano	Garum Mallam	1374	1177	197	17%
Kano	Gaya	4080	3370	710	21%
Kano	Gezawa	1874	1604	270	17%
Kano	Gwarzo	1879	1614	265	16%
Kano	Kabo	1899	1612	287	18%
Kano	Kano	345	301	44	15%
Kano	Karaye	2672	2299	373	16%

Kano	Kibiya	2361	1986	375	19%
Kano	Kiru	4360	3657	704	19%
Kano	Kumbotso	253	225	29	13%
Kano	Kunchi	3551	2722	829	30%
Kano	Kura	793	689	104	15%
Kano	Madobi	1411	1191	220	19%
Kano	Makoda	2419	1791	628	35%
Kano	Minjibir	1899	1612	286	18%
Kano	Rano	2293	1971	322	16%
Kano	Rimin Gado	1430	1207	222	18%
Kano	Rogo	4747	3999	747	19%
Kano	Shanono	2689	2332	357	15%
Kano	Sumaila	6630	5710	920	16%
Kano	Takai	4272	3580	691	19%
Kano	Tofa	952	806	146	18%
Kano	Tsanyawa	2859	2344	516	22%
Kano	Tudun Wada	5638	4911	727	15%
Kano	Ungogo	378	337	41	12%
Kano	Warawa	2337	1978	359	18%
Kano	Wudil	2328	1921	407	21%
Katsina	Bakori	4378	3674	704	19%
Katsina	Batagarawa	2772	2079	693	33%
Katsina	Batsari	5116	3807	1309	34%
Katsina	Baure	3127	2315	812	35%
Katsina	Bindawa	2697	1902	795	42%
Katsina	Charanchi	3067	2263	804	36%
Katsina	Dandume	2495	2047	448	22%
Katsina	Danja	1994	1633	361	22%
Katsina	Danmusa	4088	3235	854	26%
Katsina	Daura	2142	1532	611	40%
Katsina	Dutsi	1648	1157	491	42%
Katsina	Dutsinma	3212	2532	680	27%
Katsina	Faskari	7880	6784	1097	16%
Katsina	Funtua	2934	2430	504	21%
Katsina	Ingawa	4483	3190	1293	41%
Katsina	Jibia	4797	3646	1150	32%
Katsina	Kafur	5279	4484	795	18%
Katsina	Kaita	5176	3931	1245	32%
Katsina	Kankara	6853	5768	1085	19%
Katsina	Kankia	4854	3807	1046	27%
Katsina	Katsina	465	349	116	33%
Katsina	Kurfi	2732	2070	662	32%
Katsina	Kusada	2039	1489	550	37%
Katsina	Mai'Adua	3170	2301	869	38%
Katsina	Malumfashi	4059	3513	546	16%
Katsina	Mani	5489	3931	1558	40%
Katsina	Mashi	4497	3391	1106	33%




Katsina	Matazu	3324	2712	613	23%
Katsina	Musawa	4860	4113	747	18%
Katsina	Rimi	2590	1898	692	36%
Katsina	Sabuwa	3818	3146	672	21%
Katsina	Safana	6731	5196	1534	30%
Katsina	Sandamu	1581	1117	465	42%
Katsina	Zango	4192	3077	1115	36%
Kebbi	Aleiro	1933	1606	327	20%
Kebbi	Arewa Dandi	22507	18660	3847	21%
Kebbi	Argungu	5545	4558	988	22%
Kebbi	Augie	9624	8634	990	11%
Kebbi	Bagudo	16352	14110	2242	16%
Kebbi	Birnin Kebbi	5178	4307	871	20%
Kebbi	Bunza	3130	2584	545	21%
Kebbi	Dandi	8916	7399	1517	20%
Kebbi	Danko Wasagu	12177	10486	1691	16%
Kebbi	Fakai	7114	6035	1079	18%
Kebbi	Gwandu	5413	4900	513	10%
Kebbi	Jega	3154	2612	542	21%
Kebbi	Kalgo	2915	2411	503	21%
Kebbi	Koko/Besse	5815	4895	920	19%
Kebbi	Maiyama	7077	5820	1257	22%
Kebbi	Ngaski	7108	6067	1041	17%
Kebbi	Sakaba	4776	4086	690	17%
Kebbi	Shanga	4993	4237	756	18%
Kebbi	Suru	4857	4027	830	21%
Kebbi	Yauri	3075	2614	461	18%
Kebbi	Zuru	3745	3085	661	21%
Kogi	Ankpa	204	161	43	26%
Kogi	Bassa	467	381	86	23%
Kogi	Kogi	670	569	101	18%
Kogi	Lokoja	461	394	67	17%
Kogi	Omala	702	578	124	21%
Kogi	Yagba West	357	284	73	26%
Kwara	Asa	4986	3345	1641	49%
Kwara	Baruten	22895	16362	6534	40%
Kwara	Edu	9269	7208	2061	29%
Kwara	Ekiti	1432	1065	366	34%
Kwara	Ifelodun	9247	6797	2450	36%
Kwara	Ilorin East	1835	1293	542	42%
Kwara	Ilorin South	324	230	94	41%
Kwara	Ilorin West	658	460	198	43%
Kwara	Irepodun	3317	2400	917	38%
Kwara	Isin	1291	932	359	39%
Kwara	Kaiama	13699	9837	3862	39%
Kwara	Moro	8329	5889	2441	41%
Kwara	Offa	622	405	217	53%

Kwara	Oke-Ero	1419	1060	359	34%
Kwara	Oyun	1202	781	421	54%
Kwara	Pategi	8250	6880	1370	20%
Nasarawa	Akwanga	2548	2442	105	4%
Nasarawa	Awe	6550	5399	1151	21%
Nasarawa	Doma	6914	5702	1212	21%
Nasarawa	Karu	6720	6234	486	8%
Nasarawa	Keana	2679	2267	412	18%
Nasarawa	Keffi	491	458	33	7%
Nasarawa	Kokona	4026	3836	189	5%
Nasarawa	Lafia	7447	6852	595	9%
Nasarawa	Nasarawa	15309	13094	2215	17%
Nasarawa	Nasarawa Eggon	2867	2827	40	1%
Nasarawa	Obi	2751	2383	368	15%
Nasarawa	Toto	5939	4910	1029	21%
Nasarawa	Wamba	2824	2804	20	1%
Niger	Agai	7426	5926	1500	25%
Niger	Agwara	6654	5585	1069	19%
Niger	Bida	408	316	92	29%
Niger	Borgu	19722	16362	3360	21%
Niger	Bosso	7706	6448	1258	20%
Niger	Chanchaga	354	303	51	17%
Niger	Edati	2479	1981	498	25%
Niger	Gbako	6955	5515	1440	26%
Niger	Gurara	4891	4127	764	18%
Niger	Katcha	7619	6168	1451	24%
Niger	Kontagora	7183	6126	1057	17%
Niger	Lapai	10204	8418	1786	21%
Niger	Lavun	14097	10865	3233	30%
Niger	Magama	14060	11914	2146	18%
Niger	Mariga	19421	16721	2700	16%
Niger	Mashegu	22661	18292	4370	24%
Niger	Mokwa	15889	12457	3432	28%
Niger	Muya	6594	6041	553	9%
Niger	Paikoro	9489	8116	1373	17%
Niger	Rafi	13433	11526	1907	17%
Niger	Rijau	11788	9955	1833	18%
Niger	Shiroro	18928	16915	2013	12%
Niger	Suleja	834	709	124	18%
Niger	Tafa	371	327	43	13%
Niger	Wushishi	5595	4560	1035	23%
Osun	Ifedayo	387	298	89	30%
Oyo	Irepo	194	128	66	52%
Oyo	Ori-Ire	456	304	151	50%
Plateau	Barkin Ladi	4296	3645	651	18%
Plateau	Bassa	6514	5765	749	13%
Plateau	Bokkos	3798	3432	366	11%



Plateau	Jos East	3061	2720	341	13%
Plateau	Jos North	2774	2352	422	18%
Plateau	Jos South	1992	1658	333	20%
Plateau	Kanam	11678	10006	1672	17%
Plateau	Kanke	5816	4905	911	19%
Plateau	Langtang North	4451	3612	839	23%
Plateau	Langtang South	5741	4749	992	21%
Plateau	Mangu	7804	6563	1241	19%
Plateau	Mikang	2784	2260	524	23%
Plateau	Pankshin	6702	5643	1059	19%
Plateau	Qua'an Pan	9596	8130	1467	18%
Plateau	Riyom	4176	3497	679	19%
Plateau	Shendam	11167	9170	1997	22%
Plateau	Wase	21499	17826	3673	21%
Sokoto	Binji	6175	7124	-949	-13%
Sokoto	Bodinga	5672	5929	-257	-4%
Sokoto	Dange-Shuni	8110	8322	-212	-3%
Sokoto	Gada	8081	8064	17	0%
Sokoto	Goronyo	11663	10645	1018	10%
Sokoto	Gudu	25210	19283	5927	31%
Sokoto	Gwadabawa	10792	11176	-384	-3%
Sokoto	Illela	11689	13197	-1509	-11%
Sokoto	Isa	12596	10804	1792	17%
Sokoto	Kebbe	10271	8614	1657	19%
Sokoto	Kware	7246	7739	-492	-6%
Sokoto	Rabah	20291	19435	855	4%
Sokoto	Sabon Birni	15087	13138	1949	15%
Sokoto	Shagari	10126	9582	545	6%
Sokoto	Silame	3919	4152	-233	-6%
Sokoto	Tambuwal	18417	19477	-1060	-5%
Sokoto	Tangaza	16122	12891	3231	25%
Sokoto	Tureta	7728	6086	1642	27%
Sokoto	Wamako	5342	5050	292	6%
Sokoto	Wurno	5048	4751	297	6%
Sokoto	Yabo	8735	9423	-688	-7%
Taraba	Ardo-Kola	10285	8776	1509	17%
Taraba	Bali	24751	22100	2651	12%
Taraba	Donga	10850	9655	1195	12%
Taraba	Gashaka	12102	11608	495	4%
Taraba	Gassol	23981	20250	3730	18%
Taraba	Ibi	11081	9015	2066	23%
Taraba	Jalingo	865	727	138	19%
Taraba	Karim Lamido	26252	21933	4318	20%
Taraba	Kurmi	7855	8174	-318	-4%
Taraba	Lau	8681	7229	1452	20%
Taraba	Sardauna	8912	8404	508	6%
Taraba	Takum	5188	4675	513	11%



Taraba	Ussa	2663	2523	140	6%
Taraba	Wukari	13380	10933	2447	22%
Taraba	Yorro	7058	5865	1193	20%
Taraba	Zing	4104	3453	651	19%
Yobe	Bade	4837	3899	938	24%
Yobe	Borsari	15573	11734	3839	33%
Yobe	Damaturu	11047	9100	1947	21%
Yobe	Fika	11462	9647	1814	19%
Yobe	Fune	28710	22438	6272	28%
Yobe	Geidam	18843	13822	5021	36%
Yobe	Gujba	14196	12279	1917	16%
Yobe	Gulani	11365	9675	1690	17%
Yobe	Jakusko	23275	16467	6808	41%
Yobe	Karasuwa	4756	3411	1345	39%
Yobe	Machina	4259	3123	1136	36%
Yobe	Nangere	5753	4632	1121	24%
Yobe	Nguru	4906	3495	1411	40%
Yobe	Potiskum	3134	2583	551	21%
Yobe	Tarmuwa	21599	16566	5033	30%
Yobe	Yunusari	14026	11754	2272	19%
Yobe	Yusufari	16587	12616	3970	31%
Zamfara	Anka	8334	7233	1101	15%
Zamfara	Bakura	9180	7122	2058	29%
Zamfara	Birnin-Magaji/Kiyaw	4434	3536	898	25%
Zamfara	Bukkuyum	10374	8659	1715	20%
Zamfara	Bungudu	6583	5786	797	14%
Zamfara	Gummi	12665	10320	2345	23%
Zamfara	Gusau	12099	10438	1661	16%
Zamfara	Kaura Namoda	2928	2352	575	24%
Zamfara	Maradun	9837	7845	1993	25%
Zamfara	Maru	23894	20936	2958	14%
Zamfara	Shinkafi	3866	3007	859	29%
Zamfara	Talata-Mafara	3558	2879	679	24%
Zamfara	Tsafe	7872	6843	1029	15%
Zamfara	Zurmi	11453	9008	2445	27%
Total		2641044	2213199	427845	19%

MT (Metric tons): 1 MT is equivalent to 1,000 kilograms.

Change: refers to the relative difference and is calculated as (2023 prod – 2022 prod) divided by 2022 prod.

Suggested Citation: Ndoye, A., M. Dia, and K. Dia. 2023. AAgWa Crop Production Forecasts Brief Series: Nigeria – Millet. AAgWa Crop Production Forecasts Brief Series, No. 37. Kigali: AKADEMIYA2063.
<https://doi.org/10.54067/acpf.37>