

# AAGWa Crop Production Forecasts Brief Series

## Burkina Faso – Rice

Aissatou Ndoye\*, Mansour Dia \*\*, and Khadim Dia\*\*\*

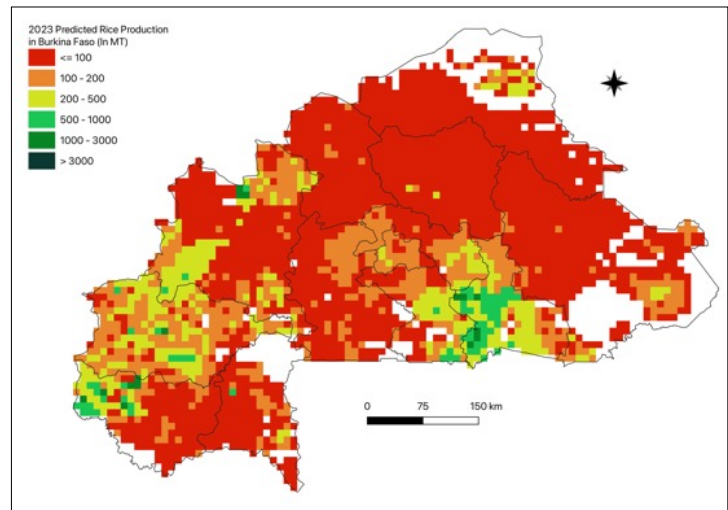
No. 46, August 2023

The crop production forecast brief series by AKADEMIYA2063's Africa Agriculture Watch (AAGWa) aims to provide more accurate and timely data on harvest and yields for nine major crops across nearly 50 African countries. The timeliness, wide availability, and easy access to this type of data will allow stakeholders across the value chain to better plan and execute policy and business actions more efficiently. The data published in the briefs are generated through the Africa Crop Production (AfCP) model, an Artificial Intelligence (AI-based) model applied to remotely sensed geo-biophysical data to produce estimates at pixel as well as administrative levels as early as the beginning of every growing season. In Brief 46, we provide forecasts on rice production in Burkina Faso.

In 2023, rice production in Burkina Faso is projected to reach 344,651 metric tons (MT), indicating a 5% increase over 2022 production levels. The most significant production levels are expected in the Western and Southern provinces, particularly in Boulgou (Centre-Est), Houet (Haut-Bassins), Comoé (Cascades), Banwa (Boucle du Mouhoun), Kéné Dougou (Haut-Bassins), and Léraba (Cascades), with production levels estimated at 43,583 MT, 29,223 MT, 24,488 MT, 17,890 MT, 17,618 MT, and 16,802 MT, respectively. In comparison, lower production values are observed in provinces such as Ioba (Sud-Ouest), Séno (Sahel), Soum (Sahel), Yagha (Sahel), and Zondoma (Nord), with production levels of, respectively, 207 MT, 232 MT, 876 MT, 894 MT, and 1,567 MT.

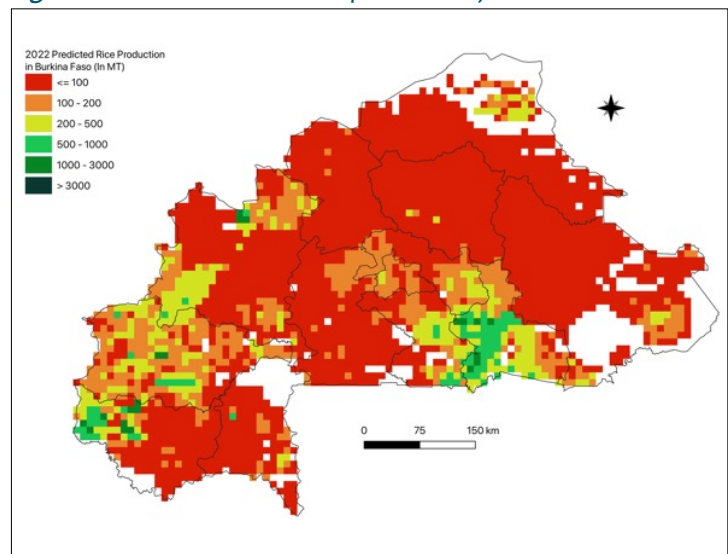
Compared to 2022, the most significant rice production increases in 2023 are expected to occur in Gourma (Est), Tapoa (Est), Mouhoun (Boucle du Mouhoun), Sissili (Centre-Ouest), Kossi (Boucle du Mouhoun), and Kéné Dougou, with differences reaching, 2,089 MT, 1,956 MT, 1,392 MT, 1,202 MT, 1,096 MT, and 1,022 MT. These correspond to changes of, respectively, 44%, 22%, 32%, 28%, 14% and 6%.

Figure 1. Burkina Faso 2023 rice production forecast.



Data Source: Africa Agriculture Watch ([www.aagwa.org](http://www.aagwa.org)).

Figure 2. Burkina Faso 2022 rice production forecast.



Data Source: Africa Agriculture Watch ([www.aagwa.org](http://www.aagwa.org)).

\*Associate Scientist, Department of Data Management, Digital Products, and Technology, AKADEMIYA2063


\*\* Associate Scientist, Department of Data Management, Digital Products, and Technology, AKADEMIYA2063

\*\*\*Senior Associate Scientist, Department of Data Management, Digital Products, and Technology, AKADEMIYA2063



## Annex – 2023 Burkina Faso Rice Production Forecast at District level

Regions	Provinces	2023 Production (MT)	2022 Production (MT)	Difference (MT)	Change (%)
Boucle du Mouhoun	Balé	6904	6040	864	14%
Boucle du Mouhoun	Banwa	17890	18312	-422	-2%
Boucle du Mouhoun	Kossi	8952	7856	1096	14%
Boucle du Mouhoun	Mouhoun	5732	4341	1392	32%
Boucle du Mouhoun	Nayala	3448	2852	595	21%
Boucle du Mouhoun	Sourou	12406	11920	485	4%
Cascades	Comoé	24488	23522	966	4%
Cascades	Léraba	16802	18120	-1318	-7%
Centre	Kadiogo	4485	3904	581	15%
Centre-Est	Boulgou	43583	47953	-4370	-9%
Centre-Est	Koulpélogo	11900	12149	-249	-2%
Centre-Est	Kouritenga	5698	5289	409	8%
Centre-Nord	Bam	1678	1670	9	1%
Centre-Nord	Namentenga	3436	3018	418	14%
Centre-Nord	Sanmatenga	5325	4850	475	10%
Centre-Ouest	Boulkiemdé	6030	5127	903	18%
Centre-Ouest	Sanguié	3633	2753	880	32%
Centre-Ouest	Sissili	5452	4250	1202	28%
Centre-Ouest	Ziro	4279	3311	968	29%
Centre-Sud	Bazèga	4584	3795	788	21%
Centre-Sud	Nahouri	7036	7019	17	0%
Centre-Sud	Zoundwéogo	10584	10923	-339	-3%
Est	Gnagna	5854	5055	798	16%
Est	Gourma	6836	4747	2089	44%
Est	Komandjoari	2519	1850	669	36%
Est	Kompienga	2985	2905	80	3%
Est	Tapoa	11042	9086	1956	22%
Haut-Bassins	Houet	29223	28278	946	3%
Haut-Bassins	KénéDougou	17618	16596	1022	6%
Haut-Bassins	Tuy	8053	7038	1015	14%
Nord	Loroum	1836	2109	-273	-13%
Nord	Passoré	2528	2126	403	19%
Nord	Yatenga	5582	4736	845	18%
Nord	Zoncoma	1567	1288	279	22%
Plateau-Central	Ganzourgou	9078	8520	558	7%
Plateau-Central	Kourwéogo	2744	2434	310	13%
Plateau-Central	Oubritenga	2738	2326	412	18%
Sahel	Oudalan	7024	7927	-903	-11%
Sahel	Séno	232	349	-116	-33%
Sahel	Soum	876	2425	-1549	-64%
Sahel	Yagha	894	984	-90	-9%



Sud-Ouest	Bougouriba	2067	1551	516	33%
Sud-Ouest	Ioba	207	174	33	19%
Sud-Ouest	Noumbiel	2441	2218	223	10%
Sud-Ouest	Poni	6383	5734	649	11%
Total		344651	329429	15222	5%

**MT (Metric tons):** 1 MT is equivalent to 1,000 kilograms.

**Change:** refers to the relative difference and is calculated as (2023 prod – 2022 prod) divided by 2022 prod.

**Suggested Citation:** Ndoye, A., M. Dia, and K. Dia. 2023. AAgWa Crop Production Forecasts Brief Series: Burkina Faso – Rice. AAgWa Crop Production Forecasts Brief Series, No. 46. Kigali: AKADEMIYA2063. <https://doi.org/10.54067/acpf.46>