

# AAGWa Crop Production Forecasts Brief Series

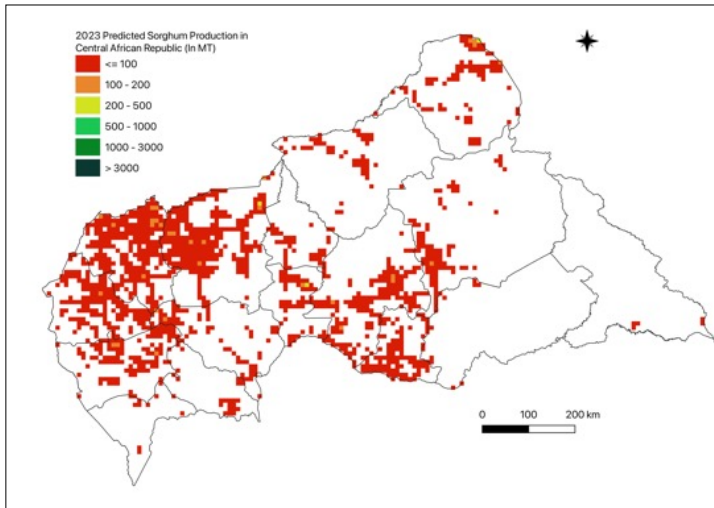
## Central African Republic – Sorghum

Aissatou Ndoye\*, Mansour Dia \*\*, and Khadim Dia\*\*\*

No. 47, August 2023

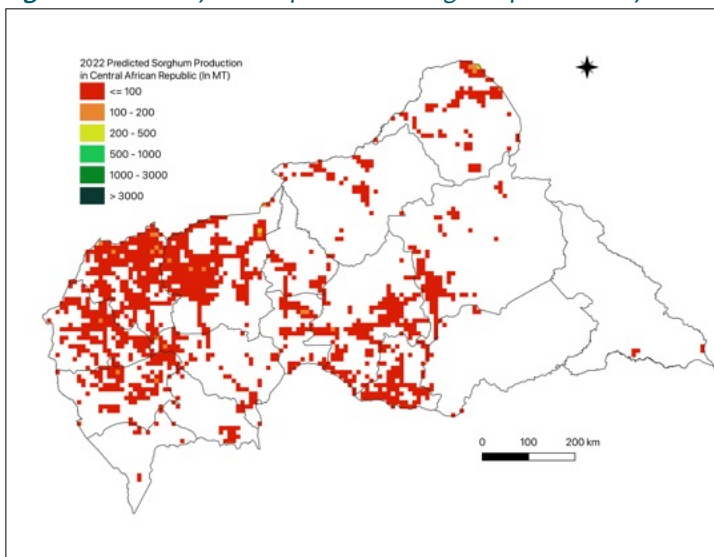
The crop production forecast brief series by AKADEMIYA2063's Africa Agriculture Watch (AAGWa) aims to provide more accurate and timely data on harvest and yields for nine major crops across nearly 50 African countries. The timeliness, wide availability, and easy access to this type of data will allow stakeholders across the value chain to better plan and execute policy and business actions more efficiently. The data published in the briefs are generated through the Africa Crop Production (AfCP) model, an Artificial Intelligence

Figure 1. Central African Republic 2022 sorghum production forecast.



Data Source: Africa Agriculture Watch ([www.aagwa.org](http://www.aagwa.org)).

Figure 2. Central African Republic 2022 sorghum production forecast.



Data Source: Africa Agriculture Watch ([www.aagwa.org](http://www.aagwa.org)).

(AI-based) model applied to remotely sensed geo-biophysical data to produce estimates at pixel as well as administrative levels as early as the beginning of every growing season. In Brief 47, we provide forecasts on sorghum production in Central African Republic.

In 2023, sorghum production in Central African Republic is projected to experience a 9% increase in production, with an annual production of 31,848 metric tons (MT). The Western and Northern districts are expected to produce the most significant volumes of sorghum, particularly in Paoua (Ouham-Pendé), Bossangoa (Ouham), Birao (Vakaga), and Bocaranga (Ouham-Pendé), with production levels estimated at 3,720 MT, 3,367 MT, 2,353 MT, and 2,344 MT respectively. In contrast, lower production values are observed in Bamingui (Bamingui-Bangoran), Boali (Ombella-M'Poko), Obo (Haut-Mbomou), and Bambio (Sangha-Mbaéré), reaching only, 19 MT, 28 MT, 32 MT, and 33 MT.

However, the most significant sorghum production increases in 2023 are expected to occur in Paoua, Bossangoa, Bocaranga, and Batangafo (Ouham), with differences of respectively, 479 MT, 408 MT, 370 MT, and 221 MT. They similarly correspond to changes of respectively 15%, 14%, 19%, and 13%.

\*Associate Scientist, Department of Data Management, Digital Products, and Technology, AKADEMIYA2063


\*\* Associate Scientist, Department of Data Management, Digital Products, and Technology, AKADEMIYA2063

\*\*\*Senior Associate Scientist, Department of Data Management, Digital Products, and Technology, AKADEMIYA2063



## Annex – 2023 Central African Republic Sorghum Production Forecast at District level

Prefectures	Sub-Prefectures	2023 Production (MT)	2022 Production (MT)	Difference (MT)	Change (%)
Bamingui-Bangoran	Bamingui	19	32	-13	-40%
Bamingui-Bangoran	Ndélé	393	438	-44	-10%
Basse-Kotto	Alindao	488	454	34	8%
Basse-Kotto	Kembé	498	454	44	10%
Basse-Kotto	Mingala	49	70	-21	-30%
Basse-Kotto	Mobaye	877	785	92	12%
Haut-Mbomou	Obo	32	41	-10	-23%
Haute-Kotto	Bria	1084	1028	56	5%
Haute-Kotto	Ouadda	121	130	-9	-7%
Haute-Kotto	Yalinga	79	87	-8	-9%
Kémo	Dékoa	1016	889	126	14%
Kémo	Sibut	326	345	-19	-5%
Lobaye	Boda	65	73	-8	-11%
Lobaye	M'Baïki	359	339	20	6%
Mambéré-Kadéï	Berbérati	391	383	8	2%
Mambéré-Kadéï	Carnot	1517	1413	104	7%
Mambéré-Kadéï	Gamboula	49	71	-22	-31%
Mbomou	Bakouma	38	52	-14	-27%
Mbomou	Gambo-Ouango	57	57	0	0%
Nana-Grébizi	Kaga-Bandoro	413	375	38	10%
Nana-Grébizi	Mbrès	172	173	-1	-1%
Nana-Mambéré	Baboua	327	383	-57	-15%
Nana-Mambéré	Baoro	604	601	4	1%
Nana-Mambéré	Bouar	1253	1105	148	13%
Ombella-M'Poko	Bimbo	140	139	1	1%
Ombella-M'Poko	Boali	28	46	-18	-39%
Ombella-M'Poko	Damara	66	94	-28	-30%
Ombella-M'Poko	Yaloké	893	836	57	7%
Ouaka	Bakala	41	50	-9	-19%
Ouaka	Bambari	763	715	48	7%
Ouaka	Grimari	640	576	64	11%
Ouaka	Ippy	1053	986	66	7%
Ouaka	Kouango	730	698	32	5%
Ouham	Batangafo	1871	1651	221	13%
Ouham	Bossangoa	3367	2959	408	14%
Ouham	Bouca	392	375	17	4%
Ouham	Kabo	393	354	39	11%
Ouham	Markounda	1933	1718	215	13%
Ouham-Pendé	Bocaranga	2344	1973	370	19%
Ouham-Pendé	Bozoum	728	738	-9	-1%
Ouham-Pendé	Paoua	3720	3242	479	15%



Sangha-Mbaéré	Bambio	33	38	-5	-14%
Sangha-Mbaéré	Nola	64	72	-8	-11%
Vakaga	Birao	2353	2201	151	7%
Vakaga	Ouanda Djallé	70	68	2	3%
Total		31848	29306	2542	9%

**MT (Metric tons):** 1 MT is equivalent to 1,000 kilograms.

**Change:** refers to the relative difference and is calculated as (2023 prod – 2022 prod) divided by 2022 prod.

**Suggested Citation:** Ndoye, A., M. Dia, and K. Dia. 2023. AAgWa Crop Production Forecasts Brief Series: Central African Republic – Sorghum. AAgWa Crop Production Forecasts Brief Series, No. 47. Kigali: AKADEMIYA2063. <https://doi.org/10.54067/acpf.47>