



AAGWa Crop Production Forecasts Brief Series Mali – Sorghum

Aissatou Ndoye*, Mansour Dia **, and Khadim Dia***

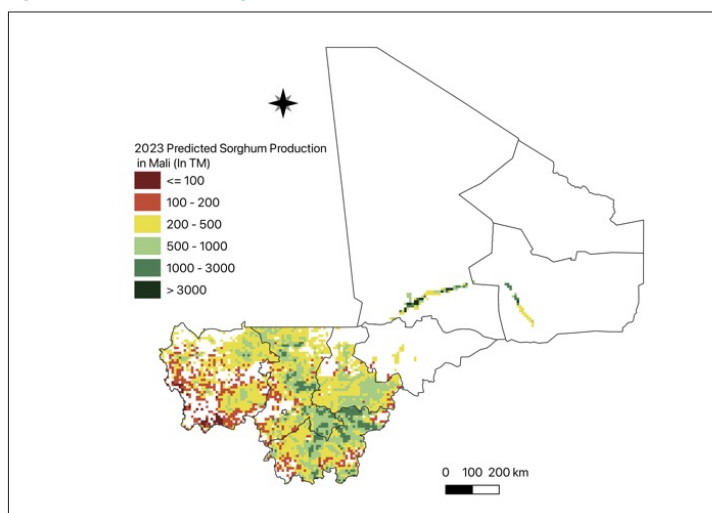
No. 49, August 2023

The crop production forecast brief series by AKADEMIYA2063's Africa Agriculture Watch (AAGWa) aims to provide more accurate and timely data on harvest and yields for nine major crops across nearly 50 African countries. The timeliness, wide availability, and easy access to this type of data will allow stakeholders across the value chain to better plan and execute policy and business actions more efficiently. The data published in the briefs are generated through the Africa Crop Production (AfCP) model, an Artificial Intelligence (AI-based) model applied to remotely sensed geo-biophysical data to produce estimates at pixel as well as administrative levels as early as the beginning of every growing season. In Brief 49, we provide forecasts on sorghum production in Mali.

In 2023, sorghum production in Mali is projected to reach 1,621,421 metrics tons (MT), indicating a 14% increase over 2022 production levels. The southern part of the country is expected to produce the most significant volumes of sorghum, particularly in Nara (Koulikoro), Dioïla (Koulikoro), Bougouni (Sikasso), Koutiala (Sikasso), and Sikasso with production levels estimated at 142,287 MT, 120,784 MT, 114,334 MT, 109,637 MT, and 101,597 MT, respectively. On the contrary, lower production values are observed in the Central and Eastern districts such as Bankass (Mopti), Bandiagara (Mopti), Ténenkou (Mopti), Djenné (Mopti), and Ansongo (Gao), with production of, respectively, 215 MT, 428 MT, 1,951 MT, 2,170 MT, and 2,180 MT.

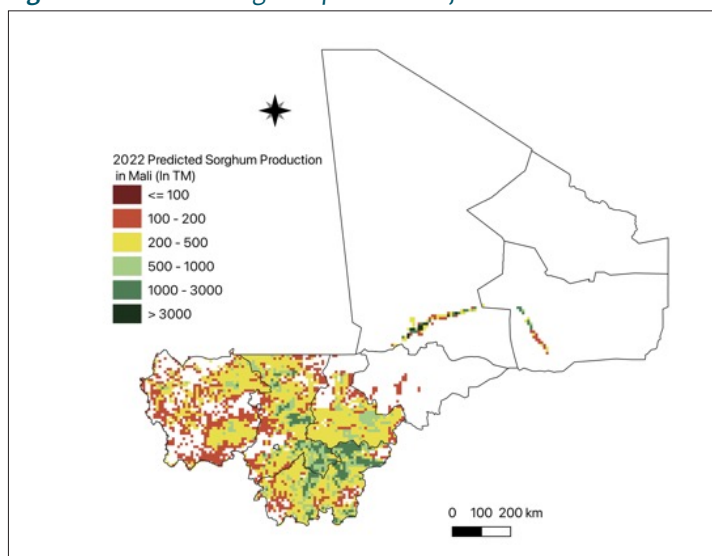
Moreover, the most significant sorghum production increases in 2023 compared to 2022 are expected in districts such as Nara, Kita (Kayes), Ségou, Diéma (Kayes), and Goundam (Timbuktu) with differences of respectively 34,486 MT, 15,509 MT, 14,151 MT, 13,657 MT, and 12,204 MT. They correspond to changes of respectively, 32%, 21%, 31%, 29%, and 45%.

Figure 1. Mali 2022 sorghum production forecast.



Data Source: Africa Agriculture Watch (www.aagwa.org).

Figure 2. Mali 2022 sorghum production forecast.



Data Source: Africa Agriculture Watch (www.aagwa.org).

*Associate Scientist, Department of Data Management, Digital Products, and Technology, AKADEMIYA2063


** Associate Scientist, Department of Data Management, Digital Products, and Technology, AKADEMIYA2063

***Senior Associate Scientist, Department of Data Management, Digital Products, and Technology, AKADEMIYA2063



Annex – 2023 Mali Sorghum Production Forecast at District level

Regions	Districts	2023 Production (MT)	2022 Production (MT)	Difference (MT)	Change (%)
Gao	Ansongo	2180	1401	779	56%
Gao	Bourem	11380	8309	3071	37%
Gao	Gao	17620	11767	5853	50%
Kayes	Bafoulabé	38835	33114	5721	17%
Kayes	Diéma	60729	47072	13657	29%
Kayes	Kayes	41832	34099	7733	23%
Kayes	Kéniéba	10129	11611	-1482	-13%
Kayes	Kita	90904	75395	15509	21%
Kayes	Nioro	32175	23530	8646	37%
Kayes	Yélimané	6723	4629	2094	45%
Koulikoro	Banamba	66859	63985	2873	4%
Koulikoro	Dioïla	120784	126708	-5925	-5%
Koulikoro	Kangaba	12360	10568	1793	17%
Koulikoro	Kati	49770	44241	5529	12%
Koulikoro	Kolokani	44563	35586	8977	25%
Koulikoro	Koulikoro	35396	33387	2008	6%
Koulikoro	Nara	142287	107800	34486	32%
Mopti	Bandiagara	428	266	163	61%
Mopti	Bankass	215	155	61	39%
Mopti	Djenné	2170	1610	560	35%
Mopti	Mopti	3166	2044	1122	55%
Mopti	Ténenkou	1951	1336	615	46%
Ségou	Barouéli	21253	17790	3463	19%
Ségou	Bla	37506	30188	7318	24%
Ségou	Macina	25361	19307	6054	31%
Ségou	Niono	29415	21068	8347	40%
Ségou	San	45792	36877	8915	24%
Ségou	Ségou	60505	46354	14151	31%
Ségou	Tominian	28181	22587	5594	25%
Sikasso	Bougouni	114334	105156	9178	9%
Sikasso	Kadiolo	34306	33545	761	2%
Sikasso	Kolondiéba	49483	48336	1147	2%
Sikasso	Koutiala	109637	128406	-18769	-15%
Sikasso	Sikasso	101597	103645	-2048	-2%
Sikasso	Yanfolila	24034	20443	3590	18%
Sikasso	Yorosso	25792	29573	-3781	-13%
Timbuktu	Diré	32339	24258	8082	33%
Timbuktu	Goundam	39120	26915	12204	45%



Timbuktu	Gourma-Rharous	25130	17266	7864	46%
Timbuktu	Niafunké	15491	11853	3637	31%
Timbuktu	Tombouctou	9690	6295	3395	54%
Total		1621421	1428476	192945	14%

MT (Metric tons): 1 MT is equivalent to 1,000 kilograms.

Change: refers to the relative difference and is calculated as (2023 prod – 2022 prod) divided by 2022 prod.

Suggested Citation: Ndoye, A., M. Dia, and K. Dia. 2023. AAgWa Crop Production Forecasts Brief Series: Mali– Sorghum. AAgWa Crop Production Forecasts Brief Series, No. 49. Kigali: AKADEMIYA2063. <https://doi.org/10.54067/acpf.49>