

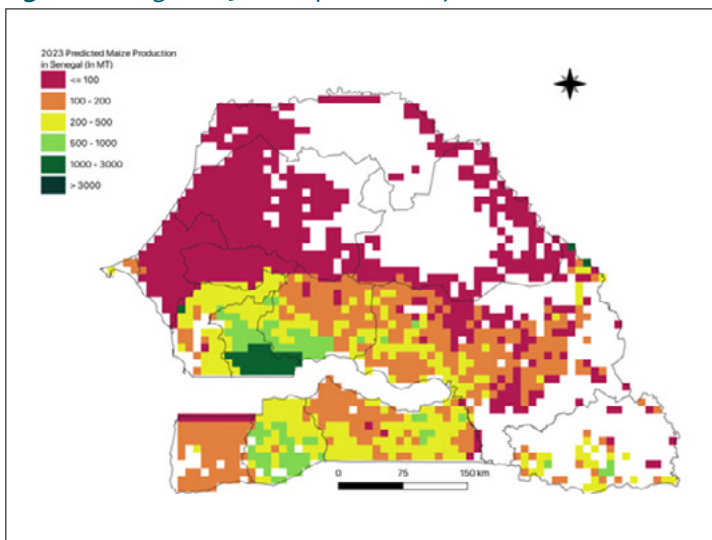
AAGWa Crop Production Forecasts Brief Series Senegal – Maize

Aïssatou Ndoye*, Mansour Dia**, Khadim Dia***

No. 51, September 2023

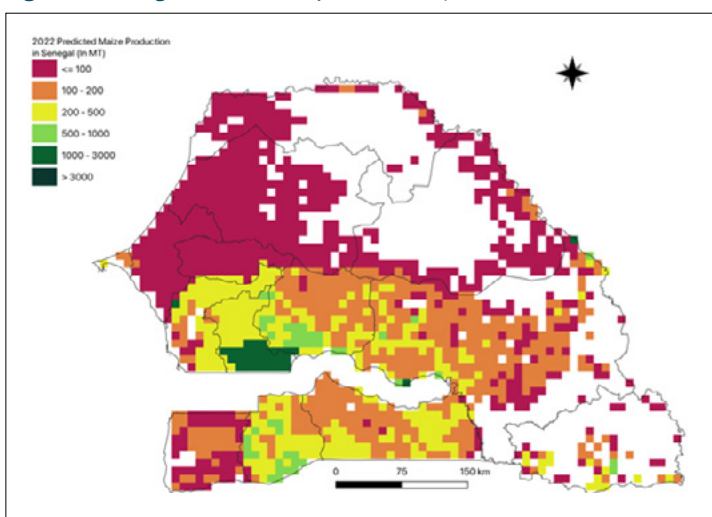
The crop production forecast brief series by AKADEMIYA2063's Africa Agriculture Watch (AAGWa) aims to provide more accurate and timely data on harvest and yields for nine major crops across nearly 50 African countries. The timeliness, wide availability, and easy access to this type of data will allow stakeholders across the value chain to better plan and execute policy and business actions more efficiently. The data published in the briefs are generated through the Africa Crop Production (AfCP) model, an Artificial Intelligence (AI-based) model applied to remotely sensed geo-biophysical data to produce estimates at pixel as well as administrative levels as early as the beginning of every growing season. In Brief 51, we provide forecasts on maize production in Senegal.

Figure 1. Senegal 2023 maize production forecast.



Data source: Africa Agriculture Watch (www.aagwa.org).

Figure 2. Senegal 2022 maize production forecast



Data Source: Africa Agriculture Watch (www.aagwa.org).

In 2023, maize production in Senegal is projected to reach 297,782 metric tons (MT), indicating a 5% increase over 2022 production levels. The most significant production levels are expected in areas such as Niour du Rip (Kaolack), Vélingara (Kolda), Tambacounda, Koupentoum (Tambacounda), Kaolack, Kaffrine, and Sédhiou, with production levels estimated at 34,954 MT, 17,018 MT, 16,051 MT, 14,730 MT, 14,710 MT, 14,373 MT, and 14,155 MT, respectively. In comparison, lower production volumes are observed in Rufisque (Dakar), Dakar, Bambey (Diourbel), Oussouye (Ziguinchor), Matam, Mbour (Thiès), and Podor (Saint-Louis), with production levels reaching only, 325 MT, 420 MT, 914 MT, 1,036 MT, 1,185 MT, 1,423 MT, and 1,463 MT, respectively.

Moreover, the most significant maize production increases in 2023 are expected to occur in Niour du Rip, Sédhiou, Vélingara, Kédougou, Kaolack, Kaffrine, and Kolda with differences reaching, 7,430 MT, 3,291 MT, 2,802 MT, 2,525 MT, 2,257 MT, 2,081 MT, and 2,005 MT. These correspond to changes of, respectively, 27%, 30%, 20%, 50%, 18%, 17%, and 23%.

*Associate Scientist, Department of Data Management, Digital Products, and Technology, AKADEMIYA2063


** Associate Scientist, Department of Data Management, Digital Products, and Technology, AKADEMIYA2063

***Senior Associate Scientist, Department of Data Management, Digital Products, and Technology, AKADEMIYA2063



Annex – 2023 Senegal Maize Production Forecast at District level

Regions	Departments	2023 Production (MT)	2022 Production (MT)	Difference (MT)	Change (%)
Dakar	Dakar	420	374	45	12%
Dakar	Rufisque	325	354	-30	-8%
Diourbel	Bambey	914	1267	-354	-28%
Diourbel	Diourbel	1631	1927	-295	-15%
Diourbel	Mbacké	2622	3301	-679	-21%
Fatick	Fatick	10721	9281	1441	16%
Fatick	Foundiougne	8204	7877	328	4%
Fatick	Gossas	4575	4164	411	10%
Kaffrine	Birkilane	8474	7200	1275	18%
Kaffrine	Kaffrine	14373	12293	2081	17%
Kaffrine	Koungheul	10810	12260	-1450	-12%
Kaffrine	Malème Hodar	7440	7416	24	0%
Kaolack	Guinguinéo	6050	5355	695	13%
Kaolack	Kaolack	14710	12452	2257	18%
Kaolack	Nioro du Rip	34954	27524	7430	27%
Kédougou	Kédougou	7610	5085	2525	50%
Kédougou	Salémata	3641	2445	1196	49%
Kédougou	Saraya	1979	1481	498	34%
Kolda	Kolda	10673	8669	2005	23%
Kolda	Médina Yoro Foula	9682	8983	699	8%
Kolda	Vélingara	17018	14216	2802	20%
Louga	Kébémér	2158	3589	-1431	-40%
Louga	Linguère	4255	7526	-3271	-43%
Louga	Louga	2919	4975	-2056	-41%
Matam	Kanel	3102	4651	-1548	-33%
Matam	Matam	1185	2124	-938	-44%
Matam	Ranéroü Ferlo	2011	3014	-1003	-33%
Saint-Louis	Dagana	2331	4085	-1754	-43%
Saint-Louis	Podor	1463	2410	-946	-39%
Sédhiou	Boukiling	11389	9502	1888	20%
Sédhiou	Goudomp	10679	9801	879	9%
Sédhiou	Sédhiou	14155	10864	3291	30%
Tambacounda	Bakel	6254	5593	660	12%
Tambacounda	Goudiry	13390	13579	-189	-1%
Tambacounda	Koupentoum	14730	14925	-195	-1%



Regions	Departments	2023 Production (MT)	2022 Production (MT)	Difference (MT)	Change (%)
Tambacounda	Tambacounda	16051	18986	-2935	-15%
Thiès	Mbour	1423	1561	-138	-9%
Thiès	Thiès	1472	1882	-410	-22%
Thiès	Tivaouane	2269	3277	-1008	-31%
Ziguinchor	Bignona	6972	5818	1154	20%
Ziguinchor	Oussouye	1036	797	239	30%
Ziguinchor	Ziguinchor	1707	1370	337	25%
Total		297782	284252	13530	5%

MT (Metric tons): 1 MT is equivalent to 1,000 kilograms.

Change: refers to the relative difference and is calculated as (2023 prod – 2022 prod) divided by 2022 prod.

Suggested Citation: Ndoye, A., M. Dia, and K. Dia. 2023. AAgWa Crop Production Forecasts Brief Series: Senegal – Maize. AAgWa Crop Production Forecasts Brief Series, No. 51. Kigali: AKADEMIYA2063. <https://doi.org/10.54067/acpf.51>