

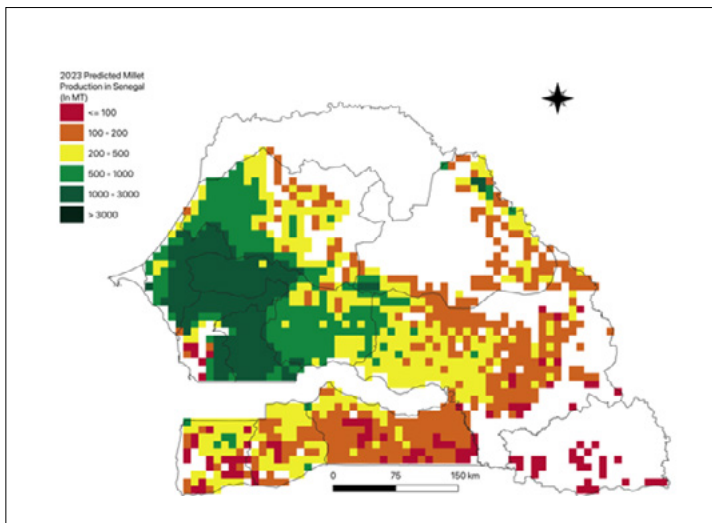
# AAGWa Crop Production Forecasts Brief Series Senegal – Millet

Aïssatou Ndoye\*, Mansour Dia\*\*, and Khadim Dia\*\*\*

No. 52, September 2023

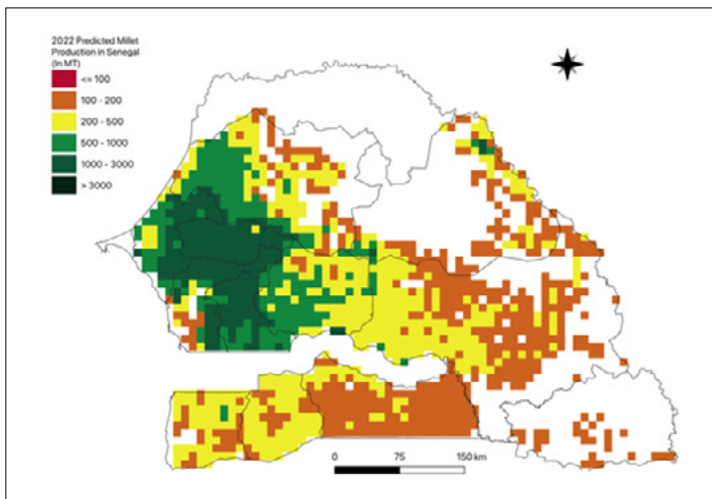
The crop production forecast brief series by AKADEMIYA2063's Africa Agriculture Watch (AAGWa) aims to provide more accurate and timely data on harvest and yields for nine major crops across nearly 50 African countries. The timeliness, wide availability, and easy access to this type of data will allow stakeholders across the value chain to better plan and execute policy and business actions more efficiently. The data published in the briefs are generated through the Africa Crop Production (AfCP) model, an Artificial Intelligence (AI-based) model applied to remotely sensed geo-biophysical data to produce estimates at pixel as well as administrative levels as early as the beginning of every growing season. In Brief 52, we provide forecasts on millet production in Senegal.

Figure 1. Senegal 2023 millet production forecast.



Data source: Africa Agriculture Watch ([www.aagwa.org](http://www.aagwa.org)).

Figure 2. Senegal 2022 millet production forecast.



Data Source: Africa Agriculture Watch ([www.aagwa.org](http://www.aagwa.org)).

In 2023, millet production in Senegal is projected to reach 694,701 metric tons (MT), which corresponds to a 9% increase over 2022 production levels. The highest producers are projected to be the western areas, particularly Mbacké (Diourbel), Tivaouane (Thiès), Linguère (Louga), Fatick, Louga, Kébémér (Louga), and Kaolack, with production levels estimated at 47,228 MT, 40,131 MT, 36,862 MT, 34,867 MT, 33,887 MT, 33,581 MT, and 31,807 MT, respectively. In comparison, lower production volumes are observed in areas such as Kédougou, Saraya (Kédougou), Salémata (Kédougou), Dagana (Saint-Louis), Oussouye (Ziguinchor), Ziguinchor, and Goudomp (Sédhiou), with production levels of respectively, 26 MT, 56 MT, 93 MT, 357 MT, 1,279 MT, 2,713 MT, and 4,286 MT.

Moreover, the most significant millet production increases in 2023 are expected to occur in Louga, Kébémér, Tivaouane, Linguère, Mbacké, Malème Hodar (Kaffrine), and Koupentoum (Tambacounda), with differences of, respectively, 6,530 MT, 6,154 MT, 5,610 MT, 5,568 MT, 4,715 MT, 4,133 MT, and 3,977 MT. These correspond to changes of, respectively, 24%, 22%, 16%, 18%, 11%, 23%, and 16%.

\*Associate Scientist, Department of Data Management, Digital Products, and Technology, AKADEMIYA2063

\*\* Associate Scientist, Department of Data Management, Digital Products, and Technology, AKADEMIYA2063

\*\*\*Senior Associate Scientist, Department of Data Management, Digital Products, and Technology, AKADEMIYA2063



## Annex – 2023 Senegal Millet Production Forecast at District level

Regions	Departments	2023 Production (MT)	2022 Production (MT)	Difference (MT)	Change (%)
Diourbel	Bambey	23441	20947	2493	12%
Diourbel	Diourbel	27435	24789	2647	11%
Diourbel	Mbacké	47228	42513	4715	11%
Fatick	Fatick	34867	31126	3742	12%
Fatick	Foundiougne	23549	23056	493	2%
Fatick	Gossas	23901	21770	2131	10%
Kaffrine	Birkilane	13777	11540	2237	19%
Kaffrine	Kaffrine	19558	15696	3862	25%
Kaffrine	Koungheul	25361	23287	2074	9%
Kaffrine	Malème Hodar	21812	17679	4133	23%
Kaolack	Guinguinéo	22226	19948	2277	11%
Kaolack	Kaolack	31807	28645	3162	11%
Kaolack	Nioro du Rip	24947	21177	3770	18%
Kédougou	Kédougou	26	2097	-2071	-99%
Kédougou	Salémata	93	938	-845	-90%
Kédougou	Saraya	56	654	-597	-91%
Kolda	Kolda	5661	6911	-1250	-18%
Kolda	Médina Yoro Foula	10469	11403	-934	-8%
Kolda	Vélingara	7284	9322	-2038	-22%
Louga	Kébémér	33581	27427	6154	22%
Louga	Linguère	36862	31294	5568	18%
Louga	Louga	33887	27357	6530	24%
Matam	Kanel	10901	10262	639	6%
Matam	Matam	11507	10114	1392	14%
Matam	Ranéro Ferlo	11037	9489	1548	16%
Saint-Louis	Dagana	357	329	28	8%
Sédhiou	Boukiling	8217	8565	-347	-4%
Sédhiou	Goudomp	4286	6096	-1810	-30%



Regions	Departments	2023 Production (MT)	2022 Production (MT)	Difference (MT)	Change (%)
Sédhiou	Sédhiou	5898	7369	-1471	-20%
Tambacounda	Bakel	4599	5102	-503	-10%
Tambacounda	Goudiry	19910	21254	-1343	-6%
Tambacounda	Koupentoum	28219	24242	3977	16%
Tambacounda	Tambacounda	24455	24955	-499	-2%
Thiès	Mbour	19883	17151	2733	16%
Thiès	Thiès	18732	15880	2852	18%
Thiès	Tivaouane	40131	34521	5610	16%
Ziguinchor	Bignona	14747	16364	-1618	-10%
Ziguinchor	Oussouye	1279	1969	-690	-35%
Ziguinchor	Ziguinchor	2713	3827	-1115	-29%
<b>Total</b>		<b>694701</b>	<b>637067</b>	<b>57635</b>	<b>9%</b>

**MT (Metric tons):** 1 MT is equivalent to 1,000 kilograms.

**Change:** refers to the relative difference and is calculated as (2023 prod – 2022 prod) divided by 2022 prod.

**Suggested Citation:** Ndoye, A., M. Dia, and K. Dia. 2023. AAgWa Crop Production Forecasts Brief Series: Senegal – Millet. AAgWa Crop Production Forecasts Brief Series, No. 52. Kigali: AKADEMIYA2063. <https://doi.org/10.54067/acpf.52>