

# AAGWa Crop Production Forecasts Brief Series

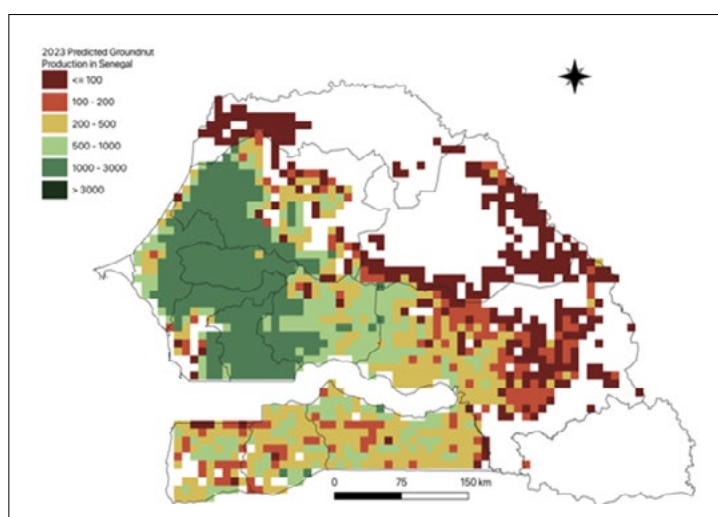
## Senegal – Groundnut

Aïssatou Ndoye\*, Mansour Dia\*\*, and Khadim Dia\*\*\*

No. 53, September 2023

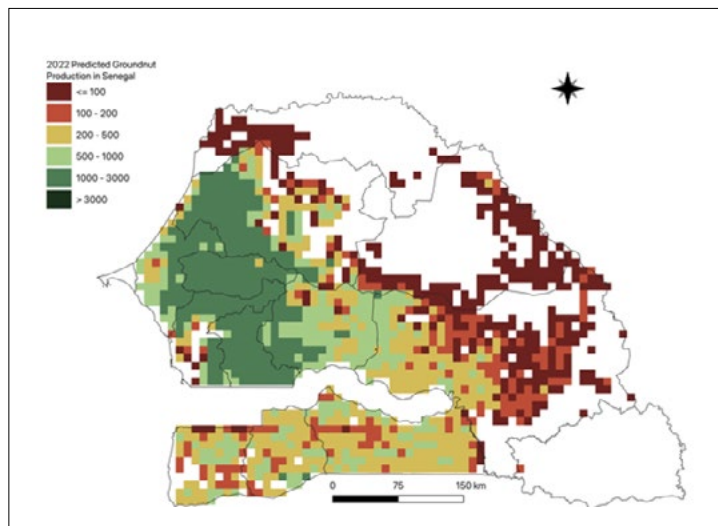
The crop production forecast brief series by AKADEMIYA2063's Africa Agriculture Watch (AAGWa) aims to provide more accurate and timely data on harvest and yields for nine major crops across nearly 50 African countries. The timeliness, wide availability, and easy access to this type of data will allow stakeholders across the value chain to better plan and execute policy and business actions more efficiently. The data published in the briefs are generated through the Africa Crop Production (AfCP) model, an Artificial Intelligence (AI-based) model applied to remotely sensed geo-biophysical data to produce estimates at pixel as well as administrative levels as early as the beginning of every growing season. In Brief 53, we provide forecasts on groundnut production in Senegal.

**Figure 1. Senegal 2023 beans production.**



Data source: Africa Agriculture Watch ([www.aagwa.org](http://www.aagwa.org)).

**Figure 2. Senegal 2022 groundnut production forecast.**



Data Source: Africa Agriculture Watch ([www.aagwa.org](http://www.aagwa.org)).

In 2023, groundnut production in Senegal is projected to reach 857,834 metric tons (MT), which corresponds to a 5% increase over 2022 production levels. The highest groundnut production levels are expected in the Western departments, particularly in Louga, Kébémér (Louga), Mbacké (Diourbel), Nioro du Rip (Kaolack), and Kaolack with production volumes estimated at 65,973 MT, 65,418 MT, 50,262 MT, 42,872, 41,443, and 40,652 MT, respectively. In comparison, lower production values are observed in Podor (Saint-Louis), Salémata (Kédougou), Dagana (Saint-Louis), Matam, Kanel (Matam), and Bakel (Tambacounda), with production levels of 35 MT, 105 MT, 319 MT, 1,360 MT, 1,363 MT, and 2,464 MT, respectively.

Moreover, the most significant groundnut production increases in 2023 are expected to occur in Tambacounda, Koupentoum (Tambacounda), Médina Yoro Foulda (Kolda), Fatick, and Kounghoul (Kaffrine), with differences of, 3,713 MT, 2,911 MT, 2,310 MT, 2,174 MT, and 2,069 MT, respectively. These correspond to changes of, respectively, 14%, 8%, 11%, 6%, and 7%.

\*Associate Scientist, Department of Data Management, Digital Products, and Technology, AKADEMIYA2063

\*\* Associate Scientist, Department of Data Management, Digital Products, and Technology, AKADEMIYA2063

\*\*\*Senior Associate Scientist, Department of Data Management, Digital Products, and Technology, AKADEMIYA2063

## Annex – 2023 Senegal Groundnut Production Forecast at District level

Regions	Departments	2023 Production (MT)	2022 Production (MT)	Difference (MT)	Change (%)
Diourbel	Bambey	23272	21944	1329	6%
Diourbel	Diourbel	26686	25362	1324	5%
Diourbel	Mbacké	42872	41317	1555	4%
Fatick	Fatick	36247	34073	2174	6%
Fatick	Foundiougne	24199	23077	1121	5%
Fatick	Gossas	24296	23462	833	4%
Kaffrine	Birkilane	19233	18431	803	4%
Kaffrine	Kaffrine	30395	29075	1320	5%
Kaffrine	Koungheul	33072	31003	2069	7%
Kaffrine	Malème Hodar	26599	25244	1354	5%
Kaolack	Guinguinéo	23575	22711	863	4%
Kaolack	Kaolack	40652	39072	1580	4%
Kaolack	Nioro du Rip	41443	40015	1428	4%
Kédougou	Salémata	105	134	-29	-21%
Kolda	Kolda	16611	16513	98	1%
Kolda	Médina Yoro Foula	22520	20210	2310	11%
Kolda	Vélingara	22542	20581	1961	10%
Louga	Kébémér	65418	63897	1522	2%
Louga	Linguère	50262	48414	1848	4%
Louga	Louga	65973	66681	-707	-1%
Matam	Kanel	1363	1383	-20	-1%
Matam	Matam	1360	1451	-92	-6%
Matam	Ranéroü Ferlo	2652	2594	59	2%
Saint-Louis	Dagana	319	952	-632	-66%
Saint-Louis	Podor	35	123	-89	-72%
Sédhiou	Boukiling	11979	11018	961	9%



Regions	Departments	2023 Production (MT)	2022 Production (MT)	Difference (MT)	Change (%)
Sédhiou	Goudomp	9173	9159	14	0%
Sédhiou	Sédhiou	11158	11315	-157	-1%
Tambacounda	Bakel	2464	2222	242	11%
Tambacounda	Goudiry	14190	12333	1857	15%
Tambacounda	Koupentoum	37887	34977	2911	8%
Tambacounda	Tambacounda	29951	26238	3713	14%
Thiès	Mbour	18609	17102	1507	9%
Thiès	Thiès	17016	15509	1507	10%
Thiès	Tivaouane	36768	35204	1564	4%
Ziguinchor	Bignona	19326	19282	44	0%
Ziguinchor	Oussouye	2515	2457	58	2%
Ziguinchor	Ziguinchor	5095	4852	242	5%
<b>Total</b>		<b>857834</b>	<b>819388</b>	<b>38446</b>	<b>5%</b>

**MT (Metric tons):** 1 MT is equivalent to 1,000 kilograms.

**Change:** refers to the relative difference and is calculated as (2023 prod – 2022 prod) divided by 2022 prod.

**Suggested Citation:** Ndoye, A., M. Dia, and K. Dia. 2023. AAgWa Crop Production Forecasts Brief Series: Senegal – Groundnut. AAgWa Crop Production Forecasts Brief Series, No. 53. Kigali: AKADEMIYA2063. <https://doi.org/10.54067/acpf.53>