

# AAGWa Crop Production Forecasts Brief Series

## Senegal – Sorghum

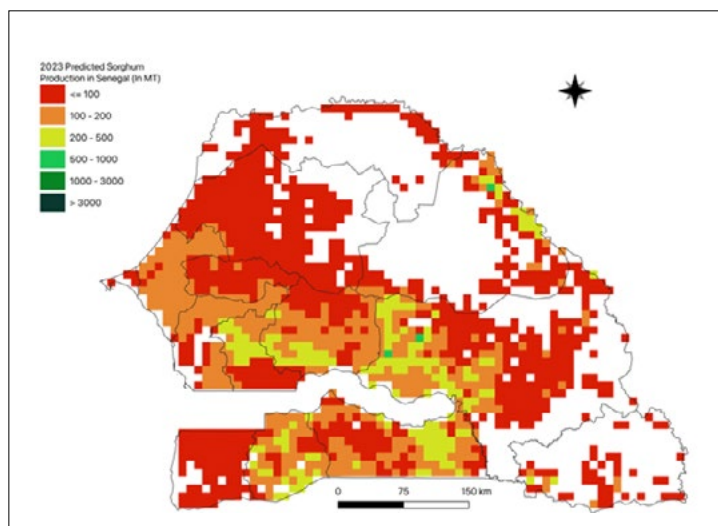
Aïssatou Ndoye\*, Mansour Dia\*\*, and Khadim Dia\*\*\*

No. 54, September 2023

The crop production forecast brief series by AKADEMIYA2063's Africa Agriculture Watch (AAGWa) aims to provide more accurate and timely data on harvest and yields for nine major crops across nearly 50 African countries. The timeliness, wide availability, and easy access to this type of data will allow stakeholders across the value chain to better plan and execute policy and business actions more efficiently. The data published in the briefs are generated through the Africa Crop Production (AfCP) model, an Artificial Intelligence (AI-based)

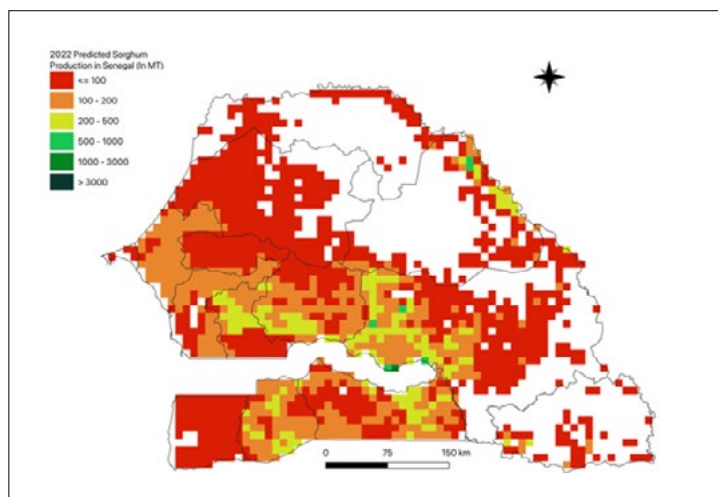
model applied to remotely sensed geo-biophysical data to produce estimates at pixel as well as administrative levels as early as the beginning of every growing season. In Brief 54, we provide forecasts on sorghum production in Senegal.

**Figure 1. Senegal 2023 sorghum production forecast.**



Data source: Africa Agriculture Watch ([www.aagwa.org](http://www.aagwa.org)).

**Figure 2. Senegal 2022 sorghum production forecast.**



Data Source: Africa Agriculture Watch ([www.aagwa.org](http://www.aagwa.org)).

In 2023, sorghum production in Senegal is projected to decline by 7% compared to 2022 production levels, with an annual production of 144,034 metric tons (MT). However, the production in areas such as Koupentoum (Tambacounda), Tambacounda, Vélingara (Kolda), Goudiry (Tambacounda), and Kounghoul (Kaffrine), is expected to be higher, with levels estimated at 14,791 MT, 14,197 MT, 11,036 MT, 6,330 MT, and 5,591 MT, respectively. In comparison, lower production values are observed in Rufisque (Dakar), Dakar, Oussouye (Ziguinchor), Dagana (Saint-Louis), and Ziguinchor, with production values of, respectively, 49 MT, 63 MT, 111 MT, 192 MT, and 199 MT.

Moreover, significant sorghum production decreases in 2023 compared to 2022 are expected in areas such as Tambacounda, Linguère (Louga), Goudiry (Tambacounda), Bignona (Ziguinchor), and Kounghoul with differences of respectively 2,445 MT, 1,827 MT, 1,175 MT, 953 MT, and 735 MT, corresponding to changes of respectively, -15%, -41%, -16%, -55%, and -12%.

In contrast, production is expected to increase in areas such as Tivaouane, Vélingara, Kolda, Mbour (Thiès), and Fatick with changes of respectively 8%, 3%, 7%, 10%, and 7%.

\*Associate Scientist, Department of Data Management, Digital Products, and Technology, AKADEMIYA2063

\*\* Associate Scientist, Department of Data Management, Digital Products, and Technology, AKADEMIYA2063

\*\*\*Senior Associate Scientist, Department of Data Management, Digital Products, and Technology, AKADEMIYA2063

## Annex – 2023 Senegal Sorghum Production Forecast at District level

Regions	Departments	2023 Production (MT)	2022 Production (MT)	Difference (MT)	Change (%)
Dakar	Dakar	63	71	-8	-12%
Dakar	Rufisque	49	108	-58	-54%
Diourbel	Bambey	1576	1508	68	5%
Diourbel	Diourbel	1682	1610	71	4%
Diourbel	Mbacké	2891	2804	86	3%
Fatick	Fatick	3721	3489	232	7%
Fatick	Foundiougne	2821	3089	-268	-9%
Fatick	Gossas	2030	1866	164	9%
Kaffrine	Birkilane	2866	2746	120	4%
Kaffrine	Kaffrine	4694	4493	201	4%
Kaffrine	Koungheul	5591	6326	-735	-12%
Kaffrine	Malème Hodar	3884	3858	27	1%
Kaolack	Guinguinéo	2491	2331	161	7%
Kaolack	Kaolack	4536	4541	-4	0%
Kaolack	Nioro du Rip	1394	1571	-177	-11%
Kédougou	Kédougou	1449	1576	-127	-8%
Kédougou	Salémata	1206	1254	-48	-4%
Kédougou	Saraya	363	560	-197	-35%
Kolda	Kolda	4727	4431	296	7%
Kolda	Médina Yoro Foula	5463	5669	-206	-4%
Kolda	Vélingara	11036	10733	303	3%
Louga	Kébémér	3006	3291	-285	-9%
Louga	Linguère	2630	4457	-1827	-41%
Louga	Louga	3140	3822	-682	-18%
Matam	Kanel	4330	5035	-706	-14%
Matam	Matam	3564	3993	-429	-11%
Matam	Ranéroü Ferlo	1078	1364	-286	-21%



Regions	Departments	2023 Production (MT)	2022 Production (MT)	Difference (MT)	Change (%)
Saint-Louis	Dagana	192	824	-632	-77%
Saint-Louis	Podor	200	902	-702	-78%
Sédhiou	Bounkiling	4845	4680	166	4%
Sédhiou	Goudomp	3547	4110	-563	-14%
Sédhiou	Sédhiou	4538	4322	216	5%
Tambacounda	Bakel	1635	1949	-314	-16%
Tambacounda	Goudiry	6330	7504	-1175	-16%
Tambacounda	Koupentoum	14791	15432	-642	-4%
Tambacounda	Tambacounda	14197	16641	-2445	-15%
Thiès	Mbour	2613	2377	235	10%
Thiès	Thiès	2653	2463	191	8%
Thiès	Tivaouane	5118	4739	378	8%
Ziguinchor	Bignona	785	1739	-953	-55%
Ziguinchor	Oussouye	111	244	-133	-54%
Ziguinchor	Ziguinchor	199	453	-254	-56%
<b>Total</b>		<b>144034</b>	<b>154976</b>	<b>-10942</b>	<b>-7%</b>

**MT (Metric tons):** 1 MT is equivalent to 1,000 kilograms.

**Change:** refers to the relative difference and is calculated as (2023 prod – 2022 prod) divided by 2022 prod.

**Suggested Citation:** Ndoye, A., M. Dia, and K. Dia. 2023. AAgWa Crop Production Forecasts Brief Series: Senegal – Sorghum. AAgWa Crop Production Forecasts Brief Series, No. 54. Kigali: AKADEMIYA2063. <https://doi.org/10.54067/acpf.54>