

# AAGWa Crop Production Forecasts Brief Series

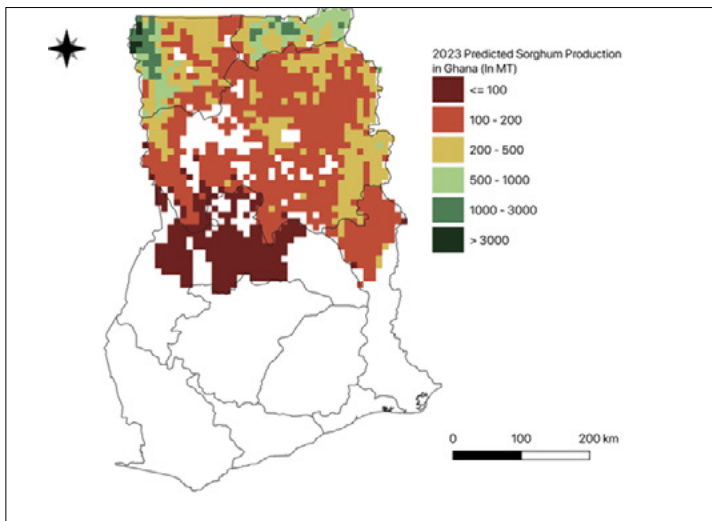
## Ghana – Sorghum

Aïssatou Ndoye\*, Mansour Dia\*\*, and Khadim Dia\*\*\*

No. 58, September 2023

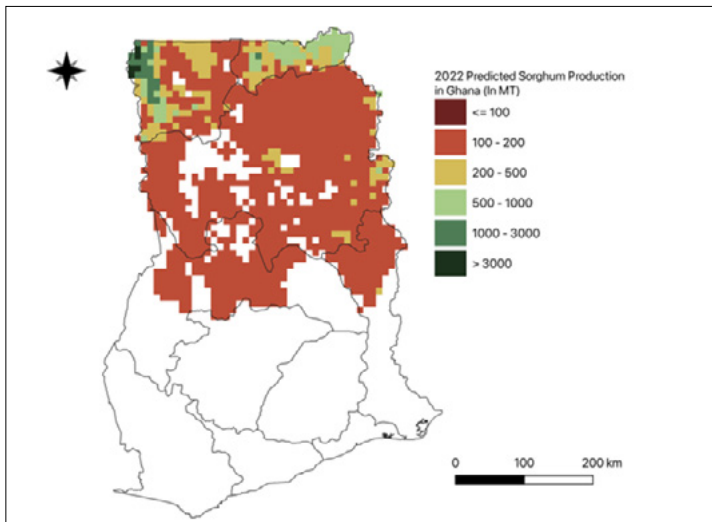
The crop production forecast brief series by AKADEMIYA2063's Africa Agriculture Watch (AAGWa) aims to provide more accurate and timely data on harvest and yields for nine major crops across nearly 50 African countries. The timeliness, wide availability, and easy access to this type of data will allow stakeholders across the value chain to better plan and execute policy and business actions more efficiently. The data published in the briefs are generated through the Africa Crop Production (AfCP) model, an Artificial Intelligence (AI-based) model applied to remotely sensed geo-biophysical data to produce estimates at pixel as well as administrative levels as early as the beginning of every growing season. In Brief 58, we provide forecasts on sorghum production in Ghana.

Figure 1. Ghana 2023 sorghum production forecast.



Data source: Africa Agriculture Watch ([www.aagwa.org](http://www.aagwa.org)).

Figure 2. Ghana 2022 sorghum production forecast.



Data Source: Africa Agriculture Watch ([www.aagwa.org](http://www.aagwa.org)).

In 2023, sorghum production in Ghana is projected to reach 333,440 metric tons (MT), indicating a 22% increase over 2022 production levels. The northern part of the country is expected to produce the most significant volumes of sorghum, particularly the Upper West districts such as Lawra, Nandom, Sissala East, Nadowli-Kaleo, and Wa East with production levels estimated at 17,643 MT, 14,653 MT, 13,528 MT, 13,228 MT, and 13,135 MT, respectively. In contrast, lower production values are observed in the Southern districts such as Techiman (Bono East), Ejura-Sekyedumase (Ashanti), Sunyani West (Bono), Sagnerigu (Northern), and Tamale (Northern), with production of, respectively, 85 MT, 90 MT, 171 MT, 253 MT, and 487 MT.

Moreover, the most significant sorghum production increases in 2023 compared to 2022 are expected in the Upper West districts such as Sissala East, Wa East, Nadowli-Kaleo, Jirapa, and Bawku West with differences of respectively 3,755 MT, 3,526 MT, 2,287 MT, 1,953 MT, and 1,928 MT. These correspond to changes of respectively, 38%, 37%, 21%, 21%, and 31%.

Moreover, the most significant sorghum production increases in 2023 compared to 2022 are expected in the Upper West districts such as Sissala East, Wa East, Nadowli-Kaleo, Jirapa, and Bawku West with differences of respectively 3,755 MT, 3,526 MT, 2,287 MT, 1,953 MT, and 1,928 MT. These correspond to changes of respectively, 38%, 37%, 21%, 21%, and 31%.

\*Associate Scientist, Department of Data Management, Digital Products, and Technology, AKADEMIYA2063

\*\* Associate Scientist, Department of Data Management, Digital Products, and Technology, AKADEMIYA2063

\*\*\*Senior Associate Scientist, Department of Data Management, Digital Products, and Technology, AKADEMIYA2063

## Annex – 2023 Ghana Sorghum Production Forecast at District level

Regions	Districts	2023 Production (MT)	2022 Production (MT)	Difference (MT)	Change (%)
Ashanti	Ejura-Sekyedumase	90	107	-17	-16%
Bono	Banda	1560	1999	-439	-22%
Bono	Sunyani West	171	217	-47	-21%
Bono	Tain	1779	2252	-473	-21%
Bono	Wenchi	703	873	-170	-19%
Bono East	Atebubu-Amantin	2219	2640	-421	-16%
Bono East	Kintampo North	3125	3692	-566	-15%
Bono East	Kintampo South	1635	2034	-399	-20%
Bono East	Nkoranza North	1533	1893	-360	-19%
Bono East	Nkoranza South	859	1073	-213	-20%
Bono East	Pru East	1721	1958	-237	-12%
Bono East	Pru West	1377	1684	-308	-18%
Bono East	Techiman	85	107	-22	-20%
North East	Bunkpurugu Nakpanduri	1811	1321	490	37%
North East	Chereponi	4079	2985	1095	37%
North East	East Mamprusi	4116	3012	1103	37%
North East	Mamprugu Moagduri	4032	3191	841	26%
North East	West Mamprusi	5605	4215	1389	33%
North East	Yunyoo-Nasuan	1196	876	319	36%
Northern	Gushiegu	5697	4352	1345	31%
Northern	Karaga	6344	4709	1636	35%
Northern	Kpandai	3644	2680	963	36%
Northern	Kumbungu	3356	2534	822	32%
Northern	Mion	4915	3721	1194	32%
Northern	Nanton	837	640	197	31%



Regions	Districts	2023 Production (MT)	2022 Production (MT)	Difference (MT)	Change (%)
Northern	Nanumba North	5785	3922	1863	48%
Northern	Nanumba South	5576	3665	1911	52%
Northern	Saboba	4061	2913	1148	39%
Northern	Sagnerigu	253	176	77	44%
Northern	Savelugu	3312	2567	745	29%
Northern	Tamale	487	375	111	30%
Northern	Tatale Sanguli	3525	2291	1234	54%
Northern	Tolon	3768	2738	1030	38%
Northern	Yendi	3696	2509	1187	47%
Northern	Zabzugu	4526	2906	1620	56%
Oti	Krachi East	4020	3526	494	14%
Oti	Krachi Nchumuru	2254	1907	347	18%
Oti	Krachi West	1610	1490	120	8%
Oti	Nkwanta North	1837	1414	423	30%
Oti	Nkwanta South	3860	3165	695	22%
Savannah	Bole	7399	7526	-127	-2%
Savannah	Central Gonja	9624	8247	1377	17%
Savannah	East Gonja	3802	3569	232	7%
Savannah	North East Gonja	8791	7063	1728	24%
Savannah	North Gonja	4812	3892	920	24%
Savannah	Sawla-Tuna-Kalba	7851	6138	1713	28%
Savannah	West Gonja	3393	3044	349	11%
Upper East	Bawku	1709	1350	359	27%
Upper East	Bawku West	8123	6195	1928	31%
Upper East	Binduri	2781	2123	658	31%
Upper East	Bolga East	1047	853	194	23%
Upper East	Bolgatanga	2101	1660	441	27%

Regions	Districts	2023 Production (MT)	2022 Production (MT)	Difference (MT)	Change (%)
Upper East	Bongo	4391	4485	-93	-2%
Upper East	Builsa North	8458	6632	1826	28%
Upper East	Builsa South	3765	2717	1048	39%
Upper East	Garu	4910	3741	1169	31%
Upper East	Kasena Nankana East	5782	4392	1390	32%
Upper East	Kasena Nankana West	4272	3077	1195	39%
Upper East	Nabdram	1169	853	316	37%
Upper East	Pusiga	2724	2175	549	25%
Upper East	Talensi	4881	3673	1208	33%
Upper East	Tempane	3828	3235	593	18%
Upper West	Daffiama-Bussie-Issa	5059	3807	1252	33%
Upper West	Jirapa	11418	9465	1953	21%
Upper West	Lambussie-Karni	10303	8829	1474	17%
Upper West	Lawra	17643	16963	680	4%
Upper West	Nadowli-Kaleo	13228	10941	2287	21%
Upper West	Nandom	14653	14095	558	4%
Upper West	Sissala East	13528	9773	3755	38%
Upper West	Sissala West	6280	4386	1894	43%
Upper West	Wa East	13135	9609	3526	37%
Upper West	Wa Municipal	5675	4410	1265	29%
Upper West	Wa West	5849	4186	1663	40%
<b>Total</b>		<b>333440</b>	<b>273432</b>	<b>60008</b>	<b>22%</b>

**MT (Metric tons):** 1 MT is equivalent to 1,000 kilograms.

**Change:** refers to the relative difference and is calculated as (2023 prod – 2022 prod) divided by 2022 prod.

**Suggested Citation:** Ndoye, A., M. Dia, and K. Dia. 2023. AAgWa Crop Production Forecasts Brief Series: Ghana – Sorghum. AAgWa Crop Production Forecasts Brief Series, No. 58. Kigali: AKADEMIYA2063. <https://doi.org/10.54067/acpf.58>