

AAGWa Crop Production Forecasts Brief Series

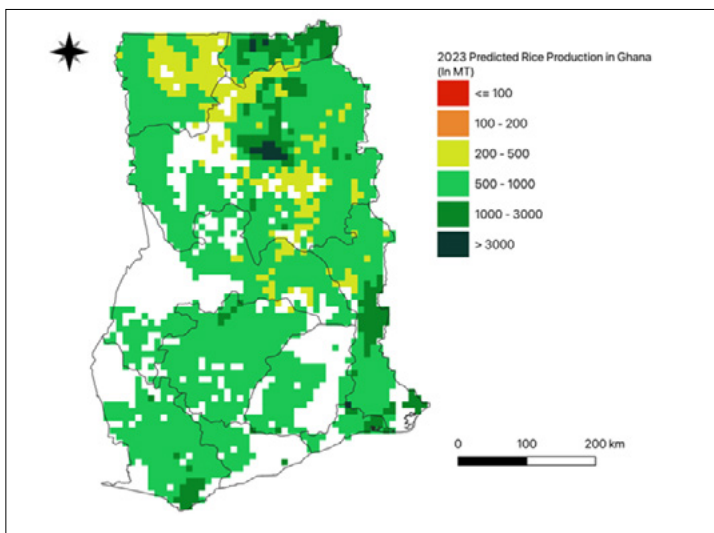
Ghana – Rice

Aïssatou Ndoye*, Mansour Dia**, and Khadim Dia***

No. 60, September 2023

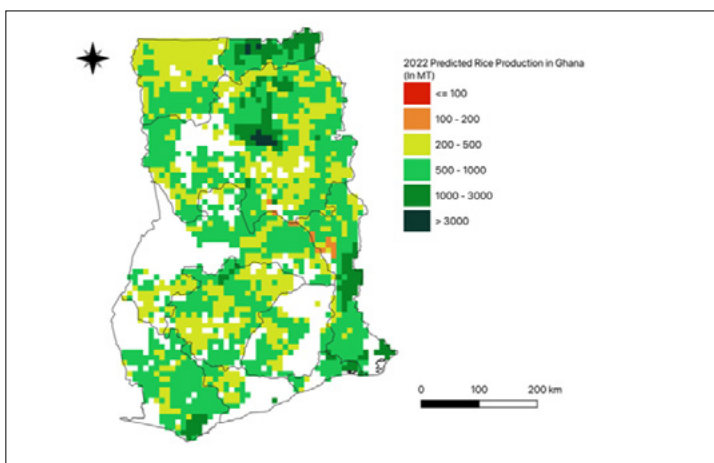
The crop production forecast brief series by AKADEMIYA2063's Africa Agriculture Watch (AAGWa) aims to provide more accurate and timely data on harvest and yields for nine major crops across nearly 50 African countries. The timeliness, wide availability, and easy access to this type of data will allow stakeholders across the value chain to better plan and execute policy and business actions more efficiently. The data published in the briefs are generated through the Africa Crop Production (AfCP) model, an Artificial Intelligence (AI-based) model applied to remotely sensed geobiophysical data to produce estimates at pixel as well as administrative levels as early as the beginning of every growing season. In Brief 60, we provide forecasts on Rice production in Ghana.

Figure 1. Ghana 2023 rice production forecast.



Data Source: Africa Agriculture Watch (www.aagwa.org).

Figure 2. Ghana 2022 rice production forecast.



Data Source: Africa Agriculture Watch (www.aagwa.org).

In 2023, rice production in Ghana is projected to reach 1,514,454 metric tons (MT) corresponding to a 11% increase over 2022 production levels. However, the highest rice production levels are expected in the Northern and Western districts, particularly in Central Gonja (Savannah), Bole (Savannah), North East Gonja (Savannah), Tolon (Northern), and Sissala East (Upper West), with production volumes estimated at 39,183 MT, 35,293 MT, 30,384 MT, 28,193 MT, and 27,542 MT respectively. In comparison, the production is projected to be lowest in the Southern areas such as Nkoranza North (Bono East), Suame (Ashanti), Asokore-Mampong (Ashanti), Techiman (Bono East), and Ga West (Greater Accra), with production levels reaching only 516 MT, 542 MT, 559 MT, 567 MT, and 571 MT, respectively.

Moreover, the most significant rice production increases in 2023 compared to last year are expected to occur in Bole, Tamale (Savannah), Sawla-Tuna-Kalba (Savannah), Nkwanta South (Oti), Krachi East (Oti), Aowin (Western North), and Sagnerigu (Northern), with differences of respectively, 4,142 MT, 4,076 MT, 3,520 MT, 3,519 MT, 3,250 MT, 2,957 MT, and 2,727 MT. These correspond to changes of 13 %, 17 %, 16 %, 21 %, 23 %, 19 %, and 18 %, respectively.

*Associate Scientist, Department of Data Management, Digital Products, and Technology, AKADEMIYA2063

** Associate Scientist, Department of Data Management, Digital Products, and Technology, AKADEMIYA2063


***Senior Associate Scientist, Department of Data Management, Digital Products, and Technology, AKADEMIYA2063

Annex – 2023 Ghana Rice Production Forecast at District level

Regions	Districts	2023 Production (MT)	2022 Production (MT)	Difference (MT)	Change (%)
Ahafo	Asunafo North	7379	6040	1339	22%
Ahafo	Asunafo South	2282	1763	520	29%
Ahafo	Asutifi North	4019	3256	763	23%
Ahafo	Asutifi South	3565	2952	613	21%
Ahafo	Tano North	6447	5339	1108	21%
Ahafo	Tano South	4149	3496	653	19%
Ashanti	Adansi Akrofuom	4414	3836	578	15%
Ashanti	Adansi Asokwa	4247	3480	768	22%
Ashanti	Adansi North	1626	1335	292	22%
Ashanti	Adansi South	5549	4642	907	20%
Ashanti	Afigya-Kwabre North	1760	1393	367	26%
Ashanti	Afigya-Kwabre South	1207	853	354	42%
Ashanti	Ahafo-Ano North	2045	1800	245	14%
Ashanti	Ahafo-Ano South East	5668	4818	851	18%
Ashanti	Ahafo-Ano South West	4395	3834	561	15%
Ashanti	Amansie Central	4016	3120	896	29%
Ashanti	Amansie South	4553	3280	1273	39%
Ashanti	Amansie West	3981	3041	940	31%
Ashanti	Asante-Akim Central	1803	1393	411	29%
Ashanti	Asante-Akim North	8121	7151	970	14%
Ashanti	Asante-Akim South	7993	6798	1195	18%
Ashanti	Asokore-Mampong	559	351	208	59%




Regions	Districts	2023 Production (MT)	2022 Production (MT)	Difference (MT)	Change (%)
Ashanti	Atwima-Kwanwoma	1210	950	260	27%
Ashanti	Atwima-Mponua	10232	8141	2091	26%
Ashanti	Atwima-Nwabiagya North	3087	2532	555	22%
Ashanti	Atwima-Nwabiagya South	1624	1247	378	30%
Ashanti	Bekwai	1817	1312	506	39%
Ashanti	Bosome Freho	3964	3216	748	23%
Ashanti	Bosomtwe	1670	1335	334	25%
Ashanti	Ejisu	2956	2177	779	36%
Ashanti	Ejura-Sekyedumase	13968	13589	378	3%
Ashanti	Juaben	728	647	81	12%
Ashanti	Kwabre East	1073	668	405	61%
Ashanti	Mampong	5564	5340	225	4%
Ashanti	Obuasi	722	603	118	20%
Ashanti	Obuasi East	868	740	128	17%
Ashanti	Offinso	3616	3040	577	19%
Ashanti	Offinso North	5253	4749	504	11%
Ashanti	Sekyere Afram Plains North	16805	15321	1484	10%
Ashanti	Sekyere Central	10350	9375	975	10%
Ashanti	Sekyere East	1130	886	244	28%
Ashanti	Sekyere Kumawu	4102	3606	497	14%
Ashanti	Sekyere South	2995	2273	722	32%
Ashanti	Suame	542	296	245	83%
Bono	Dormaa	6596	5526	1070	19%
Bono	Dormaa East	1838	1592	245	15%



Regions	Districts	2023 Production (MT)	2022 Production (MT)	Difference (MT)	Change (%)
Bono	Dormaa West	1249	1033	216	21%
Bono	Sunyani	1736	1386	350	25%
Bono East	Atebu-bu-Amantin	13280	12689	591	5%
Bono East	Kintampo North	18556	18049	507	3%
Bono East	Kintampo South	9565	9326	239	3%
Bono East	Nkoranza North	516	516	0	0%
Bono East	Nkoranza South	780	770	9	1%
Bono East	Pru East	9663	8974	689	8%
Bono East	Pru West	8248	8374	-126	-2%
Bono East	Sene East	22340	20202	2138	11%
Bono East	Sene West	17526	17666	-140	-1%
Bono East	Techiman	567	522	45	9%
Central	Assin Central	1721	1412	309	22%
Central	Assin North	2880	2420	460	19%
Central	Assin South	6313	5515	798	14%
Central	Gomoa Central	1170	1029	141	14%
Central	Twifo-Atti-Morkwa	6478	5339	1138	21%
Central	Twifo-Hemang-Lower Denkyira	3107	2594	513	20%
Central	Upper Denkyira East	3841	3413	428	13%
Central	Upper Denkyira West	2574	2136	438	20%
Eastern	Abuakwa North	1171	1003	167	17%
Eastern	Abuakwa South	1720	1516	205	14%
Eastern	Achiase	3523	3071	453	15%
Eastern	Akyemansa	793	685	108	16%
Eastern	Asene-Manso-Akroso	2771	2434	338	14%




Regions	Districts	2023 Production (MT)	2022 Production (MT)	Difference (MT)	Change (%)
Eastern	Asuogyaman	6532	5726	806	14%
Eastern	Atiwa East	3463	2690	773	29%
Eastern	Atiwa West	5363	4311	1052	24%
Eastern	Birim Central	827	807	20	3%
Eastern	Birim South	3626	3186	440	14%
Eastern	Denkyembour	3695	3215	480	15%
Eastern	Fanteakwa North	6559	6117	442	7%
Eastern	Fanteakwa South	2278	2121	157	7%
Eastern	Kwaebibirem	6051	5063	988	20%
Eastern	Kwahu Afram Plains North	2265	1621	645	40%
Eastern	Kwahu Afram Plains South	2221	1546	676	44%
Eastern	Kwahu East	4011	3414	597	18%
Eastern	Kwahu South	5165	4550	615	14%
Eastern	Kwahu West	2149	1636	513	31%
Eastern	Lower Manya-Krobo	4049	3610	440	12%
Eastern	Upper Manya	751	746	5	1%
Eastern	Upper West Akim	1644	1560	84	5%
Eastern	West Akim	3465	2746	719	26%
Greater Accra	Ada East	3474	2663	811	30%
Greater Accra	Ada West	6304	4393	1911	43%
Greater Accra	Ga Central	682	604	78	13%
Greater Accra	Ga East	622	479	143	30%
Greater Accra	Ga North	621	507	114	23%
Greater Accra	Ga South	1173	1065	108	10%
Greater Accra	Ga West	571	508	63	12%
Greater Accra	Ningo-Prampram	6120	5745	375	7%
Greater Accra	Shai Osudoku	8541	8284	257	3%
Greater Accra	Weija Gbawe	1253	1005	248	25%



Regions	Districts	2023 Production (MT)	2022 Production (MT)	Difference (MT)	Change (%)
North East	Bunkpurugu Nakpanduri	4783	4487	296	7%
North East	Chereponi	9548	7896	1651	21%
North East	East Mamprusi	12185	11470	714	6%
North East	Mamprugu Moagduri	12888	12244	644	5%
North East	West Mamprusi	25180	24272	908	4%
North East	Yunyoo-Nasuan	3265	2972	292	10%
Northern	Gushegu	19054	16953	2101	12%
Northern	Karaga	23458	22322	1136	5%
Northern	Kpandai	8866	7930	936	12%
Northern	Kumbungu	25219	23455	1764	8%
Northern	Mion	17735	15986	1749	11%
Northern	Nanton	7938	7492	446	6%
Northern	Nanumba North	15266	13326	1940	15%
Northern	Nanumba South	12706	11219	1487	13%
Northern	Saboba	11016	9370	1646	18%
Northern	Sagnerigu	18298	15570	2727	18%
Northern	Savelugu	21222	20509	713	3%
Northern	Tamale	27458	23382	4076	17%
Northern	Tatale Sanguli	6966	5869	1097	19%
Northern	Tolon	28193	26088	2105	8%
Northern	Yendi	12530	11680	849	7%
Northern	Zabzugu	8183	7503	679	9%
Oti	Biakoye	14912	13556	1357	10%
Oti	Jasikan	7257	6655	602	9%
Oti	Kadjebi	8406	7844	561	7%
Oti	Krachi East	17486	14236	3250	23%
Oti	Krachi Nchumuru	8721	7295	1426	20%



Regions	Districts	2023 Production (MT)	2022 Production (MT)	Difference (MT)	Change (%)
Oti	Krachi West	6794	5536	1258	23%
Oti	Nkwanta North	8957	8204	753	9%
Oti	Nkwanta South	19920	16400	3519	21%
Savannah	Bole	35293	31151	4142	13%
Savannah	Central Gonja	39183	38077	1106	3%
Savannah	East Gonja	14794	15051	-258	-2%
Savannah	North East Gonja	30384	28132	2252	8%
Savannah	North Gonja	16003	16291	-288	-2%
Savannah	Sawla-Tuna-Kalba	25151	21630	3520	16%
Savannah	West Gonja	13195	13010	185	1%
Upper East	Bawku	3026	2777	249	9%
Upper East	Bawku West	15463	14971	492	3%
Upper East	Binduri	4860	4676	184	4%
Upper East	Bolga East	1678	1531	147	10%
Upper East	Bolgatanga	3684	3509	174	5%
Upper East	Bongo	8744	8220	524	6%
Upper East	Builsa North	15688	14662	1026	7%
Upper East	Builsa South	7504	7399	105	1%
Upper East	Garu	8797	8382	415	5%
Upper East	Kasena Nankana East	18879	17317	1562	9%
Upper East	Kasena Nankana West	13127	12281	845	7%
Upper East	Nabdam	2166	2114	52	2%
Upper East	Pusiga	4524	4228	296	7%
Upper East	Talensi	11204	10568	636	6%
Upper East	Tempene	6991	4511	2480	55%
Upper West	Daffiama-Bussie-Issa	5952	5773	179	3%
Upper West	Jirapa	8238	7493	745	10%



Regions	Districts	2023 Production (MT)	2022 Production (MT)	Difference (MT)	Change (%)
Upper West	Lambussie-Karni	5512	4765	747	16%
Upper West	Lawra	3217	2725	492	18%
Upper West	Nadowli-Kaleo	7502	6817	685	10%
Upper West	Nandom	2713	2172	541	25%
Upper West	Sissala East	27542	26109	1433	5%
Upper West	Sissala West	10862	9202	1660	18%
Upper West	Wa East	27510	26948	563	2%
Upper West	Wa Municipal	5062	4622	440	10%
Upper West	Wa West	9941	8440	1500	18%
Volta	Adaklu	7142	6885	257	4%
Volta	Afadzato South	13478	12522	956	8%
Volta	Agotime Ziope	1820	1098	722	66%
Volta	Akatsi North	1534	1547	-13	-1%
Volta	Akatsi South	2755	2517	238	9%
Volta	Central Tongu	4679	4435	244	5%
Volta	Ho Municipal	4335	4022	313	8%
Volta	Ho West	7291	6903	388	6%
Volta	Hohoe	13498	12548	950	8%
Volta	Ketu North	5808	5687	120	2%
Volta	Ketu South	5996	5808	188	3%
Volta	Kpando	1477	1522	-46	-3%
Volta	North Dayi	3424	2626	799	30%
Volta	North Tongu	9638	9494	144	2%
Volta	South Dayi	2688	2366	321	14%
Volta	South Tongu	9885	9574	311	3%
Western	Ahanta West	7936	6584	1352	21%
Western	Ellembelle	8505	6784	1721	25%
Western	Mpohor	10036	9309	727	8%
Western	Nzema East	9387	7778	1610	21%

Regions	Districts	2023 Production (MT)	2022 Production (MT)	Difference (MT)	Change (%)
Western	Prestea-Huni Valley	13597	11826	1771	15%
Western	Tarkwa Nsuaem	11246	9771	1475	15%
Western	Wassa Amenfi Central	11703	9959	1744	18%
Western	Wassa Amenfi East	13164	11377	1788	16%
Western	Wassa Amenfi West	11204	9085	2119	23%
Western	Wassa East	14710	13076	1634	12%
Western North	Aowin	18557	15600	2957	19%
Western North	Bibiani-Anhwiaso-Bekwai-	5731	4767	963	20%
Western North	Bodi	658	605	52	9%
Western North	Sefwi-Akontombra	7133	6101	1033	17%
Western North	Sefwi-Wiawso	5543	4679	864	18%
Western North	Suaman	3047	2737	310	11%
Total		1514454	1361996	152459	11%

MT (Metric tons): 1 MT is equivalent to 1,000 kilograms.

Change: refers to the relative difference and is calculated as (2023 prod – 2022 prod) divided by 2022 prod.

Suggested Citation: Ndoye, A., M. Dia, and K. Dia. 2023. AAgWa Crop Production Forecasts Brief Series: Ghana – Rice. AAgWa Crop Production Forecasts Brief Series, No. 60. Kigali: AKADEMIYA2063. <https://doi.org/10.54067/acpf.60>