

AAGWa Crop Production Forecasts Brief Series

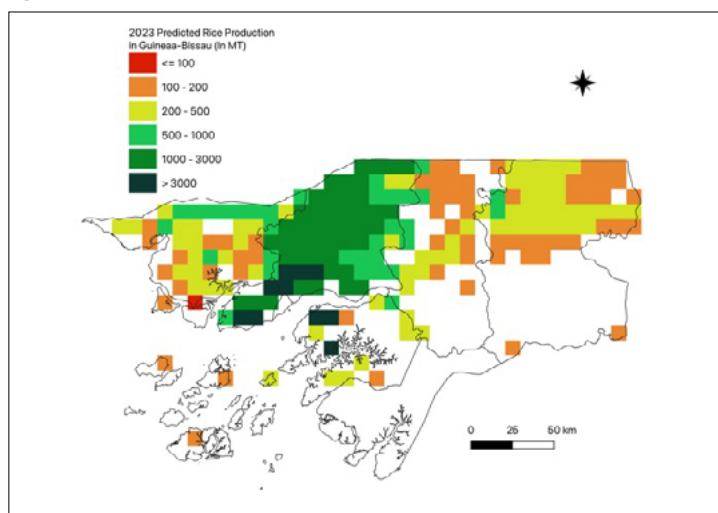
Guinea-Bissau – Rice

Aissatou Ndoye*, Mansour Dia**, and Khadim Dia***

No. 64, September 2023

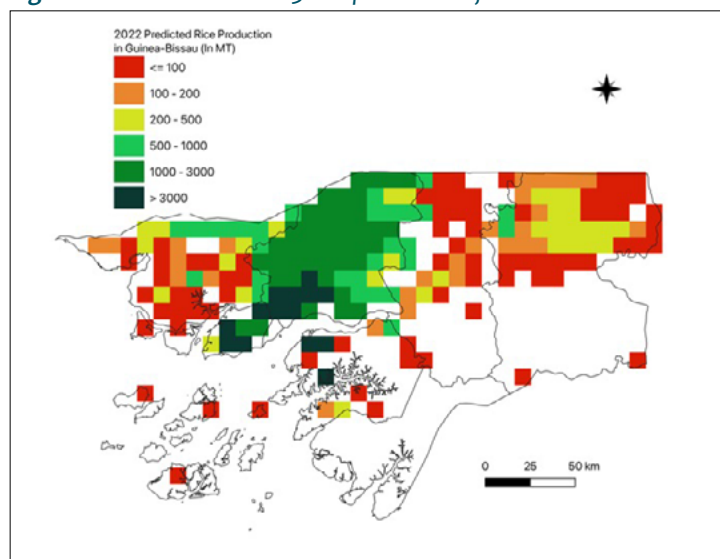
The crop production forecast brief series by AKADEMIYA2063's Africa Agriculture Watch (AAGWa) aims to provide more accurate and timely data on harvest and yields for nine major crops across nearly 50 African countries. The timeliness, wide availability, and easy access to this type of data will allow stakeholders across the value chain to better plan and execute policy and business actions more efficiently. The data published in the briefs are generated through the Africa Crop Production (AfCP) model, an Artificial Intelligence (AI-based) model applied to remotely sensed

Figure 1. Guinea-Bissau 2023 rice production forecast.



Data Source: Africa Agriculture Watch (www.aagwa.org).

Figure 2. Guinea-Bissau 2023 rice production forecast.



Data Source: Africa Agriculture Watch (www.aagwa.org).

geo- biophysical data to produce estimates at pixel as well as administrative levels as early as the beginning of every growing season. In Brief 64, we provide forecasts on rice production in Guinea-Bissau.

In 2023, rice production in Guinea-Bissau is projected to reach 167,943 metric tons (MT), indicating a 3% increase over 2022 production levels. The most significant volumes of rice production are expected in the north-central region, particularly in Oio districts such as Nhacra, Farim, Mansoa, Mansaba, and Bissora, with production volumes estimated at 20,716 MT, 19,130 MT, 17,529 MT, 17,091 MT, and 16,385 respectively. On the other hand, lower production volumes are observed in Bubaque (Bolama), Bolama, Xitole (Bafatá), and Caravela (Bolama) with respectively 124 MT, 204 MT, 218 MT, and 304 MT.

Moreover, the most significant rice production increases in 2023 are expected to occur in Piche (Gabú), Gabú, Contuboel (Bafatá), Pirada (Gabú), and Canghungo (Cacheu) with differences of respectively, 2,295 MT, 1,180 MT, 1,129 MT, 1,123 MT, and 916 MT. These correspond to changes of respectively, 89%, 91%, 75%, 54%, and 138%.

*Associate Scientist, Department of Data Management, Digital Products, and Technology, AKADEMIYA2063

** Associate Scientist, Department of Data Management, Digital Products, and Technology, AKADEMIYA2063

***Senior Associate Scientist, Department of Data Management, Digital Products, and Technology, AKADEMIYA2063



Annex – 2023 Guinea-Bissau Rice Production Forecast at District level

Regions	Districts	2023 Production (MT)	2022 Production (MT)	Difference (MT)	Change (%)
Bafatá	Bafata	1119	479	640	134%
Bafatá	Bambadinca	1577	1253	324	26%
Bafatá	Contuboel	2642	1513	1129	75%
Bafatá	Galomaro	540	191	349	182%
Bafatá	Gamamundo	1935	1444	491	34%
Bafatá	Xitole	218	55	163	294%
Biombo	Prabis	5338	5766	-429	-7%
Biombo	Quinhamel	10758	11387	-629	-6%
Biombo	Safim	5895	6289	-394	-6%
Bolama	Bolama	204	30	173	574%
Bolama	Bubaque	124	18	106	587%
Bolama	Caravela	304	58	247	428%
Cacheu	Bigene	5674	5515	159	3%
Cacheu	Bula	2845	2233	612	27%
Cacheu	Cacheu	2224	1512	712	47%
Cacheu	Caio	339	70	270	388%
Cacheu	Canghungo	1579	663	916	138%
Cacheu	Sao Domingos	3162	2519	643	26%
Gabú	Boe	359	99	260	263%
Gabú	Gabu	2476	1296	1180	91%
Gabú	Piche	4884	2589	2295	89%
Gabú	Pirada	3189	2066	1123	54%
Gabú	Sonaco	3362	2696	666	25%
Oio	Bissora	16385	17491	-1106	-6%
Oio	Farim	19130	19806	-676	-3%
Oio	Mansaba	17091	17945	-855	-5%
Oio	Mansoa	17529	18692	-1163	-6%
Oio	Nhacra	20716	22596	-1880	-8%
Quinara	Buba	614	119	496	417%
Quinara	Empada	1070	643	426	66%
Quinara	Fulacunda	1112	795	317	40%
Quinara	Tite	13549	14467	-918	-6%
Total		167943	162298	5645	3%

MT (Metric tons): 1 MT is equivalent to 1,000 kilograms.

Change: refers to the relative difference and is calculated as (2023 prod – 2022 prod) divided by 2022 prod.

Suggested Citation: Ndoye, A., M. Dia, and K. Dia. 2023. AAgWa Crop Production Forecasts Brief Series: Guinea-Bissau – Rice. AAgWa Crop Production Forecasts Brief Series, No. 64. Kigali: AKADEMIYA2063. <https://doi.org/10.54067/acpf.64>