

AAGWa Crop Production Forecasts Brief Series Ethiopia – Wheat

Aissatou Ndoye*, Mansour Dia**, and Khadim Dia***

No. 75, September 2023

The crop production forecast brief series by AKADEMIYA2063's Africa Agriculture Watch (AAGWa) aims to provide more accurate and timely data on harvest and yields for nine major crops across nearly 50 African countries. The timeliness, wide availability, and easy access to this type of data will allow stakeholders across the value chain to better plan and execute policy and business actions more efficiently. The data published in the briefs are generated through the Africa Crop Production (AfCP) model, an Artificial Intelligence (AI-based) model applied

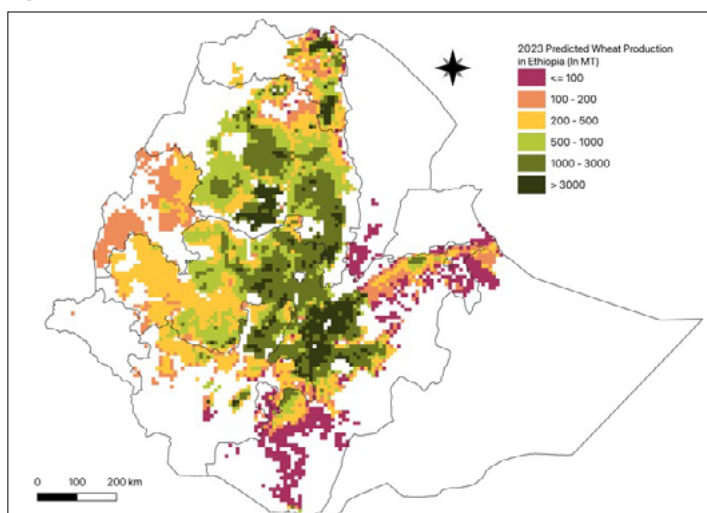
to remotely sensed geo-biophysical data to produce estimates at pixel as well as administrative levels as early as the beginning of every growing season. In Brief 75, we provide forecasts on wheat production in Ethiopia.

In 2023, wheat production in Ethiopia is expected to reach 4,740,667 metric tons (MT), which corresponds to a 5% increase over 2022 production levels. The highest wheat production levels are expected in the central areas such as, Arsi (Oromia), Mirab Arsi (Oromia), Misraq Gojjam (Amhara), Debub Wollo (Amhara), Debub Gondar (Amhara), and North Shewa (Amhara), with production estimated at respectively, 726,678 MT, 361,258 MT, 328,092 MT, 244,243 MT, 240,459 MT, and 236,363 MT.

In contrast, production is projected to be lowest in areas such as Afar Zone 5 (Afar), Nuer (Gambela Peoples), Basketo (Southern Nations, Nationalities), Majang (Gambela Peoples), Burji (Southern Nations, Nationalities), and Dire Dawa with levels of respectively, 99 MT, 102 MT, 119 MT, 186 MT, 346 MT, and 360 MT.

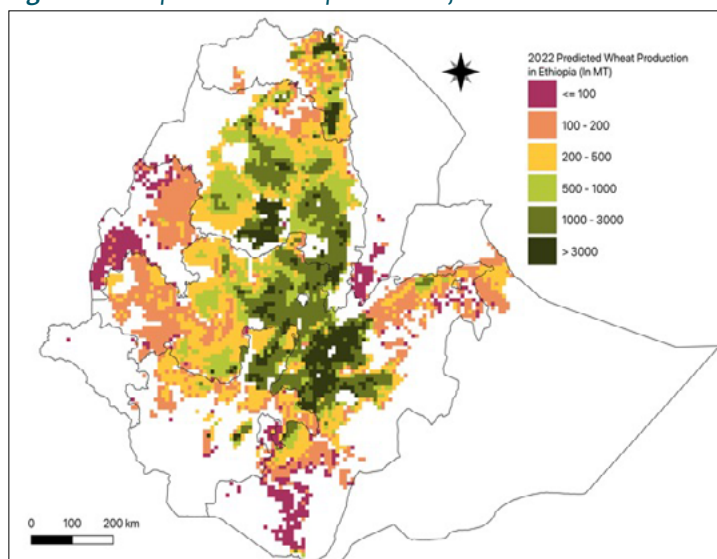
Compared to 2022, the most significant wheat production increases are expected to occur in zones such as Debub Gondar, Mirab Gojjam, Jimma (Oromia), Misraq Wellega (Oromia), Semen Gondar (Amhara), Mirab Shewa, and Debub Wollo with differences of respectively, 32,018 MT, 29,432 MT, 29,209 MT, 28,214 MT, 23,359 MT, 23,050 MT, and 22,033 MT, respectively. These represent changes of respectively, 15%, 40%, 32%, 48%, 21%, 11%, and 10%.

Figure 1. Ethiopia 2023 Wheat production forecast.



Data Source: Africa Agriculture Watch (www.aagwa.org).

Figure 2. Ethiopia 2022 Wheat production forecast.



Data Source: Africa Agriculture Watch (www.aagwa.org).

*Associate Scientist, Department of Data Management, Digital Products, and Technology, AKADEMIYA2063


** Associate Scientist, Department of Data Management, Digital Products, and Technology, AKADEMIYA2063

***Senior Associate Scientist, Department of Data Management, Digital Products, and Technology, AKADEMIYA2063



Annex – 2023 Ethiopia Wheat Production Forecast at District level

Regions	Zones	2023 Production (MT)	2022 Production (MT)	Difference (MT)	Change (%)
Afar	Afar Zone 3	2047	5714	-3667	-64%
Afar	Afar Zone 5	99	200	-101	-51%
Amhara	Agew Awi	58729	39158	19572	50%
Amhara	Argoba	1455	1259	196	16%
Amhara	Debub Gondar	240459	208441	32018	15%
Amhara	Debub Wollo	244243	222210	22033	10%
Amhara	Mirab Gojjam	103490	74058	29432	40%
Amhara	Misraq Gojjam	328092	327136	956	0%
Amhara	North Shewa	236363	231530	4833	2%
Amhara	Oromia	1737	1448	288	20%
Amhara	Semen Gondar	132367	109009	23359	21%
Amhara	Semen Wello	94273	84843	9430	11%
Amhara	Wag Himra	29720	28817	902	3%
Benshangul-Gumaz	Asosa	13659	11152	2507	22%
Benshangul-Gumaz	Kemashi	1731	994	737	74%
Benshangul-Gumaz	Metekel	46209	28171	18038	64%
Dire Dawa	Dire Dawa	360	655	-295	-45%
Gambela Peoples	Agnuak	655	404	251	62%
Gambela Peoples	Majang	186	124	62	50%
Gambela Peoples	Nuer	102	98	4	4%
Harari People	Hareri	488	593	-105	-18%
Oromia	Arsi	726678	752795	-26118	-3%
Oromia	Bale	179942	195180	-15238	-8%
Oromia	Borena	9846	24812	-14966	-60%
Oromia	Debub Mirab Shewa	180746	183528	-2782	-2%
Oromia	Guji	41982	47694	-5712	-12%
Oromia	Horo Guduru	58165	43780	14385	33%
Oromia	Ilubabor	39100	23433	15667	67%
Oromia	Jimma	120253	91043	29209	32%
Oromia	Kelem Wellega	13043	8974	4069	45%
Oromia	Mirab Arsi	361258	374773	-13514	-4%
Oromia	Mirab Hararghe	22444	25372	-2927	-12%
Oromia	Mirab Shewa	230218	207168	23050	11%
Oromia	Mirab Welega	40379	24185	16195	67%
Oromia	Misraq Harege	35693	39725	-4032	-10%
Oromia	Misraq Shewa	130963	130261	701	1%
Oromia	Misraq Wellega	87161	58947	28214	48%
Oromia	North Shewa	190505	177778	12727	7%
Somali	Fafan	9360	17102	-7742	-45%
Somali	Siti	654	699	-46	-7%
Southern Nations, Nationalities	Alaba	4292	4167	126	3%
Southern Nations, Nationalities	Amaro	849	1119	-270	-24%
Southern Nations, Nationalities	Basketo	119	101	18	18%
Southern Nations, Nationalities	Bench Maji	5698	4562	1136	25%



Southern Nations, Nationalities	Burji	346	706	-360	-51%
Southern Nations, Nationalities	Dawro	7880	6348	1532	24%
Southern Nations, Nationalities	Debub Omo	11412	11564	-152	-1%
Southern Nations, Nationalities	Gamo Gofa	35449	35463	-14	0%
Southern Nations, Nationalities	Gedeo	2406	2292	114	5%
Southern Nations, Nationalities	Gurage	65195	61940	3256	5%
Southern Nations, Nationalities	Hadiya	86177	89190	-3012	-3%
Southern Nations, Nationalities	Keffa	33532	26019	7513	29%
Southern Nations, Nationalities	Kembata Tembaro	27748	29090	-1341	-5%
Southern Nations, Nationalities	Konta	4305	3361	944	28%
Southern Nations, Nationalities	Sidama	15779	14517	1262	9%
Southern Nations, Nationalities	Silti	84892	86841	-1949	-2%
Southern Nations, Nationalities	Wolayita	12999	11601	1398	12%
Southern Nations, Nationalities	Yem	10949	10938	11	0%
Tigray	Debubawi	148324	150708	-2385	-2%
Tigray	Mehakelegdaw	70289	71950	-1661	-2%
Tigray	Mi'irabawi	4657	2341	2316	99%
Tigray	Misraqawi	89800	94377	-4577	-5%
Tigray	Semien Mi'irabaw	2714	2642	72	3%
Total		4740667	4525102	215565	5%

MT (Metric tons): 1 MT is equivalent to 1,000 kilograms.

Change: refers to the relative difference and is calculated as (2023 prod – 2022 prod) divided by 2022 prod.

Suggested Citation: Ndoye, A., M. Dia, and K. Dia. 2023. AAgWa Crop Production Forecasts Brief Series: Ethiopia – Wheat. AAgWa Crop Production Forecasts Brief Series, No. 75. Kigali: AKADEMIYA2063. <https://doi.org/10.54067/acpf.75>