

AAgWa Crop Production Forecasts Brief Series

Gambia – Groundnut

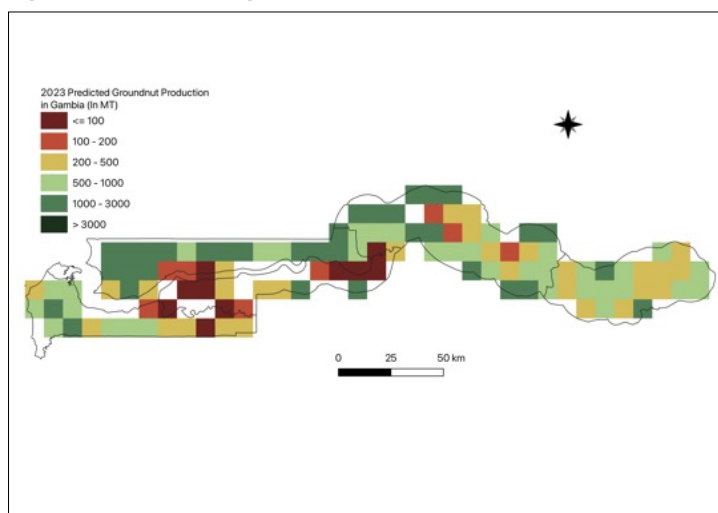
Aissatou Ndoye*, Mansour Dia**, and Khadim Dia***

No. 79, October 2023

The crop production forecast brief series by AKADEMIYA2063's Africa Agriculture Watch (AAgWa) aims to provide more accurate and timely data on harvest and yields for nine major crops across nearly 50 African countries. The timeliness, wide availability, and easy access to this type of data will allow stakeholders across the value chain to better plan and execute policy and business actions more efficiently. The data published in the briefs are generated through the Africa Crop Production (AfCP) model, an Artificial Intelligence

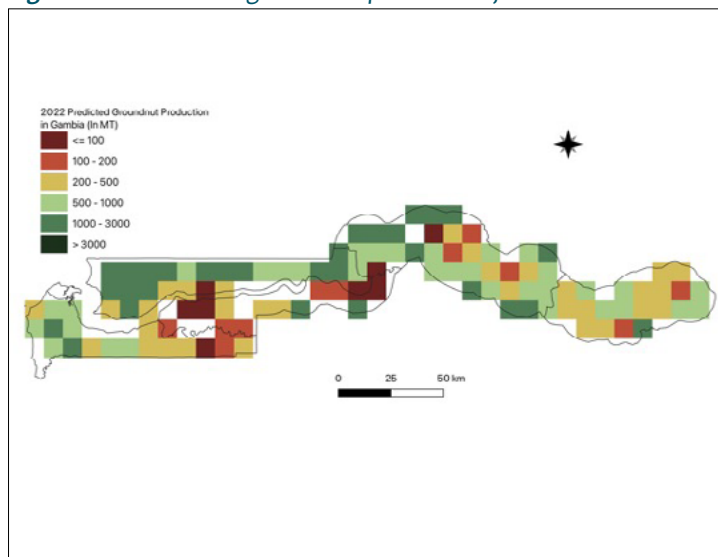
(AI-based) model applied to remotely sensed geo-biophysical data to produce estimates at pixel as well as administrative levels as early as the beginning of every growing season. In Brief 79, we provide forecasts on groundnut production in Gambia.

Figure 1. Gambia 2023 groundnut production forecast.



Data Source: Africa Agriculture Watch (www.aagwa.org).

Figure 2. Gambia 2022 groundnut production forecast.



Data Source: Africa Agriculture Watch (www.aagwa.org).

In 2023, groundnut production in Gambia is projected to reach 96,063 metric tons (MT), which corresponds to an 8% increase over 2022 production levels. The highest Groundnut production levels are expected in the Northern districts, particularly in Fulladu West (Maccarthy Island), Upper Baddibu (North Bank), Upper Saloum (Maccarthy Island), Upper Nuimi (North Bank), Lower Nuimi (North Bank), and Jokadu (North Bank) with production volumes estimated at 10,864 MT, 8,074 MT, 7,546 MT, 7,315 MT, 6,143 MT, and 5,175 MT, respectively. In comparison, lower production values are observed in Nianija (Maccarthy Island), Jarra West (Lower River), Foni Bondali (Western), Jarra East (Lower River), Janjanbureh (Maccarthy Island), and Foni Jarrol (Western), with production levels of, 100 MT, 178 MT, 231 MT, 279 MT, 304 MT, and 337 MT, respectively.

Moreover, the most significant groundnut production increases in 2023 are expected to occur in Sandu (Upper River), Fulladu West, Fulladu East (Upper River), Wuli (Upper River), and Niani (Maccarthy Island), with differences of, 1,633 MT, 1,025 MT, 647 MT, 509 MT, and 454 MT, respectively. These correspond to changes of, respectively, 109%, 10%, 18%, 16%, and 13%.

*Associate Scientist, Department of Data Management, Digital Products, and Technology, AKADEMIYA2063

** Associate Scientist, Department of Data Management, Digital Products, and Technology, AKADEMIYA2063

***Senior Associate Scientist, Department of Data Management, Digital Products, and Technology, AKADEMIYA2063



Annex – 2023 Gambia Groundnut Production Forecast at District level

Regions	Districts	2023 Production (MT)	2022 Production (MT)	Difference (MT)	Change (%)
Lower River	Jarra Central	1711	1742	-31	-2%
Lower River	Jarra East	279	42	238	567%
Lower River	Jarra West	178	165	13	8%
Lower River	Kiang Central	744	555	189	34%
Lower River	Kiang East	1507	1418	89	6%
Lower River	Kiang West	550	683	-133	-19%
Maccarthy Island	Fulladu West	10864	9839	1025	10%
Maccarthy Island	Janjanbureh	304	292	12	4%
Maccarthy Island	Lower Saloum	1663	1631	32	2%
Maccarthy Island	Niamina Dankunku	655	671	-16	-2%
Maccarthy Island	Niamina East	3856	3674	182	5%
Maccarthy Island	Niamina West	1056	1000	56	6%
Maccarthy Island	Niani	3908	3454	454	13%
Maccarthy Island	Nianija	100	86	14	16%
Maccarthy Island	Sami	3219	3003	216	7%
Maccarthy Island	Upper Saloum	7546	7305	241	3%
North Bank	Central Baddibu	4193	4055	138	3%
North Bank	Jokadu	5175	4969	206	4%
North Bank	Lower Baddibu	2724	2652	72	3%
North Bank	Lower Nuimi	6143	5896	247	4%
North Bank	Upper Baddibu	8074	8029	45	1%
North Bank	Upper Nuimi	7315	7236	79	1%
Upper River	Fulladu East	4276	3629	647	18%
Upper River	Kantora	2439	2229	210	9%
Upper River	Sandu	3124	1492	1633	109%
Upper River	Wuli	3760	3252	509	16%
Western	Foni Bintang Karanai	1164	1219	-54	-4%
Western	Foni Bondali	231	167	64	38%
Western	Foni Brefet	635	631	4	1%
Western	Foni Jarrol	337	278	59	21%
Western	Foni Kansala	471	431	40	9%
Western	Kombo Central	2009	1894	115	6%
Western	Kombo East	1062	973	89	9%
Western	Kombo Saint Mary	1853	1795	59	3%
Western	Kombo South	2937	2793	144	5%
Total		96063	89177	6886	8%

MT (Metric tons): 1 MT is equivalent to 1,000 kilograms.

Change: refers to the relative difference and is calculated as (2023 prod – 2022 prod) divided by 2022 prod.

Suggested Citation: Ndoeye, A., M. Dia, and K. Dia. 2023. AAgWa Crop Production Forecasts Brief Series: Gambia – Groundnut. AAgWa Crop Production Forecasts Brief Series, No.79. Kigali: AKADEMIYA2063. <https://doi.org/10.54067/acpf.79>