

AAgWa Crop Production Forecasts Brief Series

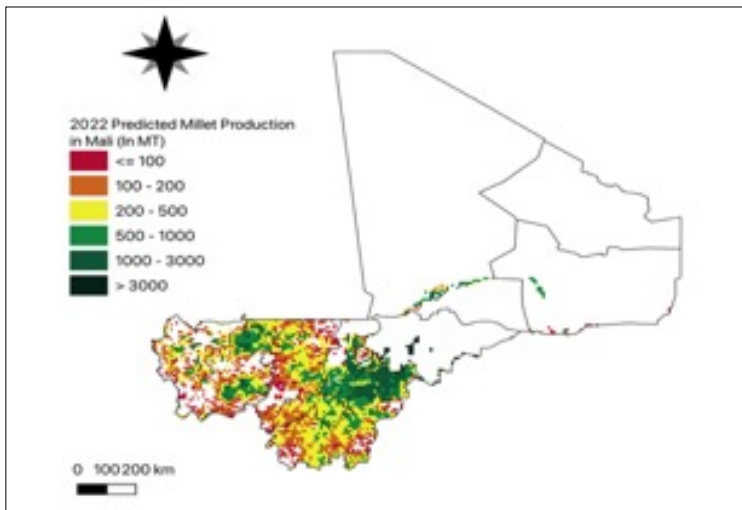
Mali – Millet

Aissatou Ndoye*, Khadim Dia**, and Racine Ly***

No. 07, February 2023

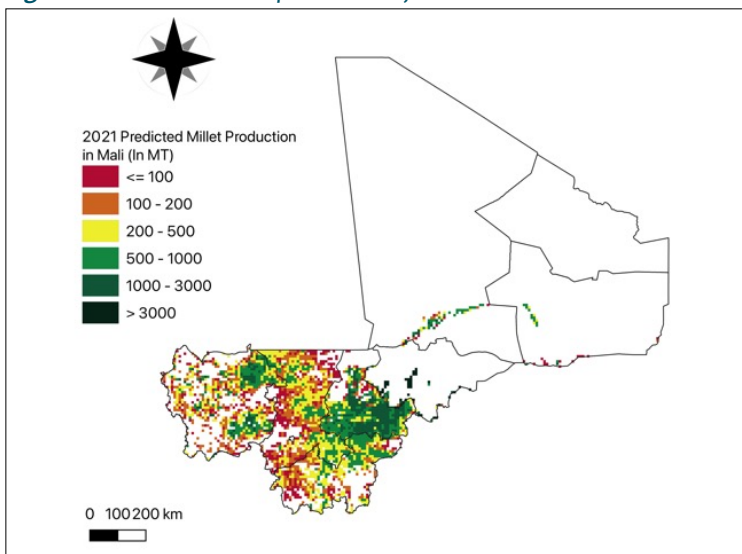
The crop production forecast brief series by AKADEMIYA2063's Africa Agriculture Watch (AAGWa) aims to provide more accurate and timely data on harvest and yields for nine major crops across nearly 50 African countries. The timeliness, wide availability, and easy access to this type of data will allow stakeholders across the value chain to better plan and execute policy and business actions more efficiently. The data published in the briefs are generated through the Africa Crop Production (AfCP) model, an Artificial Intelligence (AI-based) model applied to

Figure 1. Mali 2022 millet production forecast.



Data Source: Africa Agriculture Watch (www.aagwa.org).

Figure 2. Mali 2021 millet production forecast.



Data Source: Africa Agriculture Watch (www.aagwa.org).

remotely sensed geo-biophysical data to produce estimates at pixel as well as administrative levels as early as the beginning of every growing season. In Brief 7, we provide forecasts on Millet production in Mali.

In 2022, millet production in Mali was expected to reach 1,668,708 metric tons, equivalent to an increase of 126,958 MT over 2021 production levels. The highest levels of production are expected to be Kita (Kayes), Ségou, San (Ségou), Diéma (Kayes) and Bla (Ségou), with production values evaluated at 116,116 MT, 114,266 MT, 98,386 MT, 88,715 MT, and 83,157 MT, respectively. In contrast, lower production levels compared to 2021 are observed in districts such as Douentza (Mopti), Ménaka (Gao), Youwarou (Mopti), Bourem (Gao) and Ansongo (Gao) with 119, 565, 2,089, 3,963 and 4,177 metric tons, respectively.

The most significant increases in millet production levels compared to 2021 are expected to be in Sikasso, Bougouni (Sikasso), Kolondiéba (Sikasso), Kayes, and Kadiolo, estimated at respectively 19,990 MT, 15,888 MT, 9,868 MT, 8,911 MT, and 8,850 MT.

*Associate Scientist, Department of Data Management, Digital Products, and Technology, AKADEMIYA2063

** Senior Associate Scientist, Department of Data Management, Digital Products, and Technology, AKADEMIYA2063

***Director, Department of Data Management, Digital Products, and Technology, AKADEMIYA2063



Annex – 2022 Mali Millet Production Forecast at District level

Regions	Districts	2022 Prod (MT)	2021 Prod (MT)	Absolute Difference (MT)	Relative Difference (%)
Gao	Ansongo	4177	3571	606	17%
Gao	Bourem	3963	3343	620	19%
Gao	Gao	6456	5349	1107	21%
Gao	Ménaka	565	364	201	55%
Kayes	Bafoulabé	42993	39439	3554	9%
Kayes	Diéma	88715	91554	-2838	-3%
Kayes	Kayes	42670	33759	8911	26%
Kayes	Kéniéba	11849	8755	3093	35%
Kayes	Kita	116116	108785	7331	7%
Kayes	Nioro	44023	44030	-7	0%
Kayes	Yélimané	6341	6119	222	4%
Koulikoro	Banamba	35955	35522	434	1%
Koulikoro	Dioïla	64445	64745	-300	0%
Koulikoro	Kangaba	6459	4985	1474	30%
Koulikoro	Kati	24457	20431	4026	20%
Koulikoro	Kolokani	21976	20517	1458	7%
Koulikoro	Koulikoro	18464	17718	745	4%
Koulikoro	Nara	80937	77572	3365	4%
Mopti	Bandiagara	12864	12510	354	3%
Mopti	Bankass	34654	27747	6907	25%
Mopti	Djenné	37807	36489	1318	4%
Mopti	Douentza	119	0	119	-
Mopti	Koro	39848	32341	7507	23%
Mopti	Mopti	63770	61374	2396	4%
Mopti	Téniengkou	62611	61083	1528	3%
Mopti	Youwarou	2089	1961	128	7%
Ségou	Barouéli	46650	46417	233	1%
Ségou	Bla	83157	80909	2248	3%
Ségou	Macina	45269	43180	2089	5%
Ségou	Niono	49407	50349	-942	-2%
Ségou	San	98386	95440	2946	3%
Ségou	Ségou	114266	112091	2175	2%
Ségou	Tominian	63332	61531	1801	3%
Sikasso	Bougouni	62493	46614	15880	34%
Sikasso	Kadiolo	16580	7730	8850	114%
Sikasso	Kolondiéba	26824	16956	9868	58%
Sikasso	Koutiala	61400	61390	10	0%
Sikasso	Sikasso	54804	34814	19990	57%
Sikasso	Yanfolila	12187	10270	1917	19%
Sikasso	Yorosso	13904	13958	-54	0%
Timbuktu	Diré	13656	12406	1250	10%
Timbuktu	Goundam	5498	4606	892	19%
Timbuktu	Gourma-Rharous	9979	8290	1689	20%
Timbuktu	Niafunké	10609	9541	1068	11%
Timbuktu	Tombouctou	5986	5196	790	15%
Total		1668708	1541750	126958	8%

Notes: MT (Metric ton): 1 MT is equivalent to 1,000 kilograms

Absolute Difference: 2022 Prod – 2021 Prod

Relative Difference: (2022 – 2021) / 2021

Suggested Citation: Ndoye, A., K. Dia, and R. Ly. 2023. AAgWa Crop Production Forecasts Brief Series: Mali – Millet. AAgWa Crop Production Forecasts Brief Series, No.7. Kigali, Rwanda: AKADEMIYA2063. <https://doi.org/10.54067/acpf.07>