

AAGWa Crop Production Forecasts Brief Series Democratic Republic of the Congo – Maize

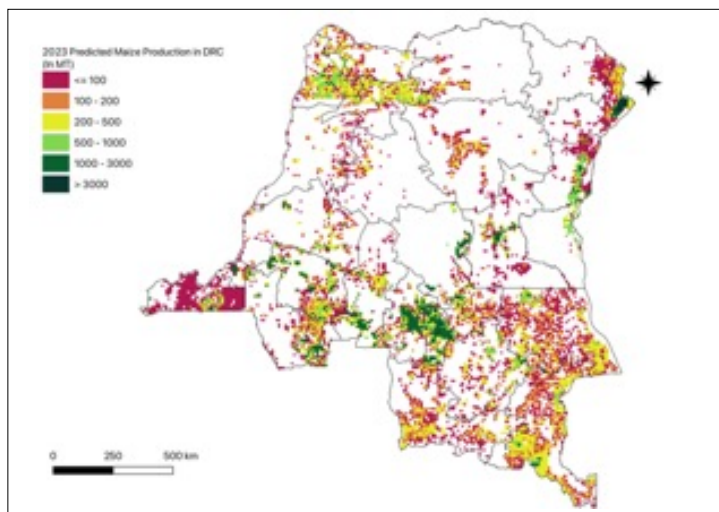
Aissatou Ndoye*, Mansour Dia**, and Khadim Dia***

No. 85, October 2023

The crop production forecast brief series by AKADEMIYA2063's Africa Agriculture Watch (AAGWa) aims to provide more accurate and timely data on harvest and yields for nine major crops across nearly 50 African countries. The timeliness, wide availability, and easy access to this type of data will allow stakeholders across the value chain to better plan and execute policy and business actions more efficiently. The data published

in the briefs are generated through the Africa Crop Production (AfCP) model, an Artificial Intelligence (AI-based) model applied to remotely sensed geobiophysical data to produce estimates at pixel as well as administrative levels as early as the beginning of every growing season. In Brief 85, we provide forecasts on maize production in DRC.

Figure 1. Senegal 2023 rice production forecast.



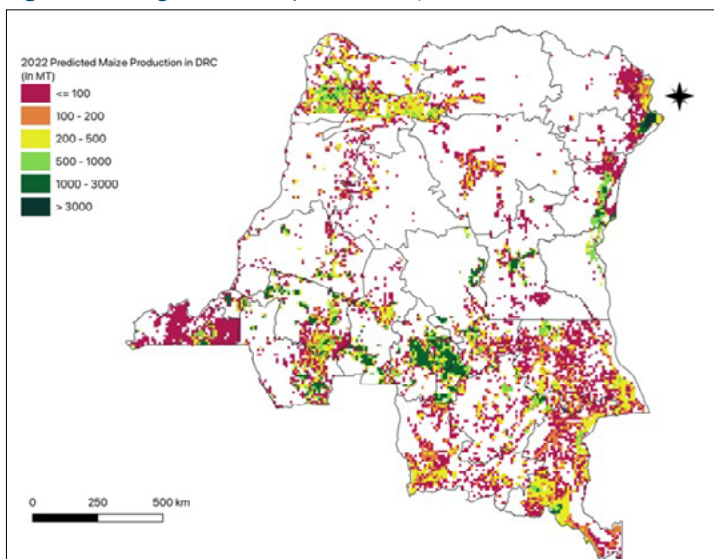
Data Source: Africa Agriculture Watch (www.aagwa.org).

Rungu (Haut-Uele), Poko (Bas-Uele), Inongo (ville) (Mai-Ndombe), and Wamba (ville) (Haut-Uele), with production levels reaching only, 47 MT, 47 MT, 48 MT, 48 MT, and 48 MT, respectively.

Moreover, the most significant maize production increases in 2023 are expected to occur in Manono (Tanganyika), Kasenga (Haut-Katanga), Moba (Tanganyika), Mitwaba (Haut-Katanga), and Pweto (Haut-Katanga) with differences of respectively, 7,166 MT, 5,903 MT, 5,895 MT, 5,482 MT, and 5,366 MT. These correspond to changes of, respectively, 19%, 22%, 15%, 46%, and 15%.

In 2023, maize production in DRC is projected to reach 2,238,376 metric tons (MT), indicating a 6% increase over 2022 production levels. The most significant production levels are expected in areas such as Kamonia (Kasai), Djugu (Ituri), Kahemba (Kwango), Dibaya (Kasai-Central), Lulu (Lomami), and Ngandajika (Lomami) with production levels estimated at 93,746 MT, 79,786 MT, 73,134 MT, 70,919 MT, 68,666 MT, and 57,179 MT, respectively. In comparison, lower production volumes are observed in Bambesa (Bas-Uele),

Figure 2. Senegal 2022 rice production forecast.



Data Source: Africa Agriculture Watch (www.aagwa.org).

*Associate Scientist, Department of Data Management, Digital Products, and Technology, AKADEMIYA2063

** Associate Scientist, Department of Data Management, Digital Products, and Technology, AKADEMIYA2063


***Senior Associate Scientist, Department of Data Management, Digital Products, and Technology, AKADEMIYA2063

Annex – 2023 DRC Maize Production Forecast at District level

Provinces	Districts	2023 Production (MT)	2022 Production (MT)	Difference (MT)	Change (%)
Bas-Uele	Aketi	8774	7204	1570	22%
Bas-Uele	Aketi (ville)	738	738	0	0%
Bas-Uele	Bambesa	47	23	24	107%
Bas-Uele	Bondo	2126	1412	715	51%
Bas-Uele	Buta	3844	3397	447	13%
Bas-Uele	Poko	48	23	25	110%
Équateur	Basankusu	5190	3878	1311	34%
Équateur	Basankusu (ville)	292	290	2	1%
Équateur	Bikoro	480	404	76	19%
Équateur	Bolomba	2520	1911	609	32%
Équateur	Bomongo	498	290	208	72%
Équateur	Ingende	4004	3058	947	31%
Équateur	Lukolela	419	258	161	62%
Équateur	Makanza	733	652	81	12%
Équateur	Mbandaka	1061	1031	30	3%
Haut-Katanga	Kambove	36926	33025	3901	12%
Haut-Katanga	Kasenga	32269	26366	5903	22%
Haut-Katanga	Kipushi	24236	23456	780	3%
Haut-Katanga	Likasi	3872	3967	-95	-2%
Haut-Katanga	Lubumbashi	9156	9358	-202	-2%
Haut-Katanga	Mitwaba	17513	12031	5482	46%
Haut-Katanga	Pweto	41285	35919	5366	15%
Haut-Katanga	Sakania	22049	17182	4867	28%
Haut-Lomami	Bukama	17590	15916	1674	11%
Haut-Lomami	Kabongo	19300	18076	1224	7%
Haut-Lomami	Kamina	15392	11873	3519	30%
Haut-Lomami	Kaniama	11273	10243	1030	10%
Haut-Lomami	Malemba-Nkulu	30062	28840	1221	4%
Haut-Uele	Aba	141	109	32	29%
Haut-Uele	Dungu	647	383	264	69%
Haut-Uele	Faradje	7066	4570	2496	55%
Haut-Uele	Rungu	47	23	24	101%
Haut-Uele	Wamba	502	401	101	25%
Haut-Uele	Wamba (ville)	48	25	24	96%
Haut-Uele	Watsa	1153	911	242	27%
Haut-Uele	Watsa (ville)	317	317	0	0%
Ituri	Aru	12034	10478	1556	15%
Ituri	Aru (ville)	239	230	9	4%
Ituri	Bunia	214	147	67	45%
Ituri	Djugu	79786	78958	828	1%
Ituri	Irumu	4200	3173	1027	32%
Ituri	Mahagi	50245	49334	911	2%
Ituri	Mahagi (ville)	713	729	-16	-2%
Ituri	Mambasa	4779	3590	1189	33%

Kasaï	Dekese	1861	1246	615	49%
Kasaï	Ilebo	20561	20268	293	1%
Kasaï	Kamonia	93746	95081	-1335	-1%
Kasaï	Luebo	2038	2024	14	1%
Kasaï	Mweka	25362	24137	1225	5%
Kasaï	Tshikapa	1406	1451	-46	-3%
Kasaï-Central	Demba	8084	7873	211	3%
Kasaï-Central	Dibaya	70919	73082	-2163	-3%
Kasaï-Central	Dimbelenge	29472	29810	-338	-1%
Kasaï-Central	Kananga	12741	13233	-492	-4%
Kasaï-Central	Kazumba	24360	23779	581	2%
Kasaï-Central	Luiza	16676	16110	566	4%
Kasaï-Oriental	Kabeya-Kamwanga	24452	24985	-533	-2%
Kasaï-Oriental	Katanda	8367	8521	-154	-2%
Kasaï-Oriental	Lukalaba	1541	1590	-49	-3%
Kasaï-Oriental	Lupatapata	23031	23559	-528	-2%
Kasaï-Oriental	Mbuji-Mayi	2279	2369	-90	-4%
Kasaï-Oriental	Miabi	14036	14305	-270	-2%
Kasaï-Oriental	Tshilenge	31728	32520	-792	-2%
Kasaï-Oriental	Tshilenge (ville)	2015	2057	-42	-2%
Kinshasa	Kinshasa	24480	24448	31	0%
Kongo-Central	Boma	54	18	36	200%
Kongo-Central	Inkisi	758	771	-14	-2%
Kongo-Central	Kasangulu	1054	516	538	104%
Kongo-Central	Kimvula	2100	979	1120	114%
Kongo-Central	Lukula	2123	2160	-37	-2%
Kongo-Central	Luozi	3370	1436	1933	135%
Kongo-Central	Madimba	12056	10148	1908	19%
Kongo-Central	Mbanza-Ngungu	19981	19015	966	5%
Kongo-Central	Moanda	3252	2370	882	37%
Kongo-Central	Moanda (ville)	312	298	14	5%
Kongo-Central	Seke-Banza	681	262	419	160%
Kongo-Central	Songololo	5071	2439	2632	108%
Kongo-Central	Tshela	217	92	125	136%
Kwango	Feshi	24768	22428	2339	10%
Kwango	Kahemba	73134	72971	163	0%
Kwango	Kasongo-Lunda	14645	13770	875	6%
Kwango	Kenge	10733	10554	180	2%
Kwango	Popokabaka	1726	1342	384	29%
Kwilu	Bagata	50739	51037	-298	-1%
Kwilu	Bandundu	2328	2390	-62	-3%
Kwilu	Bulungu	28143	28214	-71	0%
Kwilu	Gungu	47329	45287	2042	5%
Kwilu	Idiofa	38227	37628	600	2%
Kwilu	Kikwit	1407	1469	-62	-4%
Kwilu	Masi-Manimba	5989	5755	234	4%
Lomami	Kabinda	28345	26948	1398	5%

Lomami	Kabinda (ville)	1202	1253	-51	-4%
Lomami	Kamiji	5532	5444	87	2%
Lomami	Lubao	27310	24480	2829	12%
Lomami	Luilu	68666	69805	-1139	-2%
Lomami	Mwene-Ditu	2411	2464	-53	-2%
Lomami	Ngandajika	57179	58011	-832	-1%
Lomami	Ngandajika (ville)	2026	2065	-38	-2%
Lualaba	Dilolo	38962	34218	4745	14%
Lualaba	Kapanga	11488	9344	2144	23%
Lualaba	Lubudi	10611	8463	2148	25%
Lualaba	Mutshatsha	16702	13209	3493	26%
Lualaba	Sandoa	18118	13970	4148	30%
Mai-Ndombe	Bolobo	567	368	198	54%
Mai-Ndombe	Inongo	10743	10796	-52	0%
Mai-Ndombe	Inongo (ville)	48	23	25	110%
Mai-Ndombe	Kiri	4728	3962	765	19%
Mai-Ndombe	Kutu	4333	4179	154	4%
Mai-Ndombe	Kwamouth	1733	1206	527	44%
Mai-Ndombe	Mushie	486	378	108	29%
Mai-Ndombe	Yumbi	1077	984	93	9%
Maniema	Kabambare	1144	667	477	72%
Maniema	Kailo	29032	28759	273	1%
Maniema	Kalima	74	47	27	58%
Maniema	Kasongo	2756	1426	1330	93%
Maniema	Kibombo	3601	2606	995	38%
Maniema	Lubutu	2399	2072	327	16%
Maniema	Lubutu (ville)	798	809	-10	-1%
Maniema	Pangi	26401	26718	-317	-1%
Maniema	Punia	1050	508	542	107%
Mongala	Bumba	53249	51941	1308	3%
Mongala	Bumba (ville)	423	419	4	1%
Nord-Kivu	Beni	264	156	108	69%
Nord-Kivu	Butembo	2407	2423	-17	-1%
Nord-Kivu	Lubero	29209	28968	240	1%
Nord-Kivu	Masisi	23597	24247	-651	-3%
Nord-Kivu	Oicha	7624	5985	1640	27%
Nord-Kivu	Rutshuru	18601	18515	86	0%
Nord-Ubangi	Bosobolo	15727	14356	1371	10%
Nord-Ubangi	Businga	15180	13716	1464	11%
Nord-Ubangi	Gbadolite	1596	1394	203	15%
Nord-Ubangi	Mobayi-Mbongo	1985	1395	590	42%
Sankuru	Katako-Kombe	40026	41231	-1206	-3%
Sankuru	Lubefu	11017	10321	696	7%
Sankuru	Lusambo	13785	13856	-71	-1%
Sud-Kivu	Bukavu	678	688	-9	-1%
Sud-Kivu	Fizi	1005	900	105	12%
Sud-Kivu	Idjwi	2884	2919	-34	-1%
Sud-Kivu	Kabare	5003	4961	42	1%



Sud-Kivu	Kalehe	9285	9397	-111	-1%
Sud-Kivu	Mwenga	1580	1508	72	5%
Sud-Kivu	Shabunda	49	23	26	111%
Sud-Kivu	Uvira	3642	3592	51	1%
Sud-Kivu	Uvira (ville)	52	21	31	147%
Sud-Kivu	Walungu	6100	6214	-113	-2%
Sud-Ubangi	Budjala	38914	37766	1148	3%
Sud-Ubangi	Gemena	48358	48039	319	1%
Sud-Ubangi	Kungu	26293	25541	752	3%
Sud-Ubangi	Libenge	7581	6716	866	13%
Tanganyika	Kabalo	15214	11623	3591	31%
Tanganyika	Kalemie	14844	11445	3399	30%
Tanganyika	Kalemie (ville)	1230	1246	-17	-1%
Tanganyika	Kongolo	24731	23843	888	4%
Tanganyika	Kongolo (ville)	624	631	-8	-1%
Tanganyika	Manono	45643	38477	7166	19%
Tanganyika	Manono (ville)	1560	1552	8	1%
Tanganyika	Moba	44321	38426	5895	15%
Tanganyika	Nyunzu	14887	11704	3183	27%
Tshopo	Bafwasende	1229	978	251	26%
Tshopo	Banalia	509	255	254	99%
Tshopo	Basoko	4703	3960	743	19%
Tshopo	Isangi	6860	5278	1583	30%
Tshopo	Kisangani	3839	3484	355	10%
Tshopo	Opala	10195	8576	1619	19%
Tshopo	Ubundu	5823	4443	1380	31%
Tshopo	Yahuma	845	547	297	54%
Tshuapa	Befale	3114	2336	778	33%
Tshuapa	Boende	7800	6571	1229	19%
Tshuapa	Bokungu	151	77	74	96%
Tshuapa	Djolu	95	46	49	106%
Tshuapa	Ikela	236	181	55	30%
Tshuapa	Monkoto	1111	572	539	94%
Total		2238376	2108637	129739	6%

MT (Metric tons): 1 MT is equivalent to 1,000 kilograms.

Change: refers to the relative difference and is calculated as (2023 prod – 2022 prod) divided by 2022 prod.

Suggested Citation: Ndoye, A., M. Dia, and K. Dia. 2023. AAgWa Crop Production Forecasts Brief Series: DRC – Maize. AAgWa Crop Production Forecasts Brief Series, No. 85. Kigali: AKADEMIYA2063. <https://doi.org/10.54067/acpf.85>

