

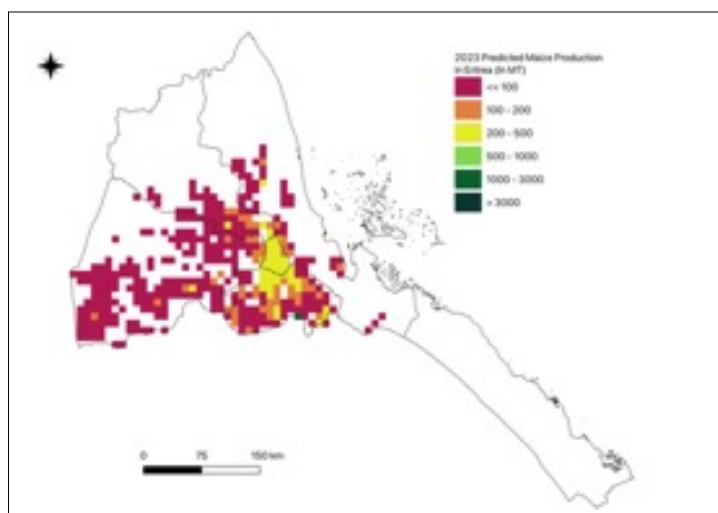
# AAGWa Crop Production Forecasts Brief Series Eritrea – Maize

Aissatou Ndoye\*, Mansour Dia\*\*, and Khadim Dia\*\*\*

No. 87, October 2023

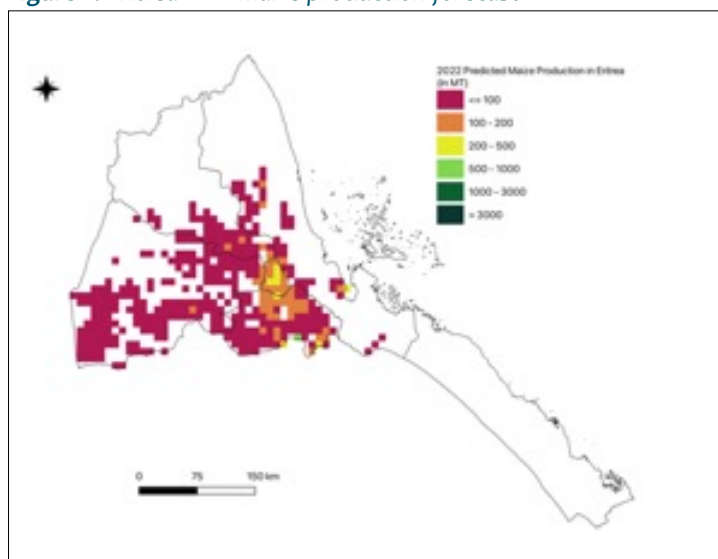
The crop production forecast brief series by AKADEMIYA2063's Africa Agriculture Watch (AAGWa) aims to provide more accurate and timely data on harvest and yields for nine major crops across nearly 50 African countries. The timeliness, wide availability, and easy access to this type of data will allow stakeholders across the value chain to better plan and execute policy and business actions more efficiently. The data published in the briefs are generated through the Africa Crop Production (AfCP) model, an Artificial Intelligence

Figure 1. Eritrea 2023 maize production forecast.



Data Source: Africa Agriculture Watch ([www.aagwa.org](http://www.aagwa.org)).

Figure 2. Eritrea 2022 maize production forecast.



Data Source: Africa Agriculture Watch ([www.aagwa.org](http://www.aagwa.org)).

(AI-based) model applied to remotely sensed geo-biophysical data to produce estimates at pixel as well as administrative levels as early as the beginning of every growing season. In Brief 87, we provide forecasts on maize production in Eritrea.

In 2023, maize production in Eritrea is projected to reach 29,728 metric tons (MT), indicating a 19% increase over 2022 production levels. The most significant production levels are expected in the Southern part of the country, particularly in Shemboko (Gash Barka), Tsorena (Debab), Dibarwa (Debab), Serejeka (Maekel), Dekemehare (Debab), Mansura (Gash Barka), and Mendefera (Debab), with production levels estimated at 1,959 MT, 1,619 MT, 1,610 MT, 1,581 MT, 1,527 MT, 1,519 MT, and 1,375 MT, respectively. In comparison, lower production volumes are observed in cities such as Forto (Gash Barka), Ghelaelo' (Semenawi Keyih Bahri), Dghe (Gash Barka), Barentu (Gash Barka), Kerke Bet (Anseba), and Gheleb (Anseba), with production levels reaching only, 10 MT, 12 MT, 46 MT, 74 MT, 80 MT, and 103 MT, respectively.

Moreover, the most significant maize production increases in 2023 are expected to occur in Dibarwa, Mendefera, Serejeka, Dekemehare, and Shemboko (Gash Barka), with differences reaching, 513 MT, 463 MT, 460 MT, 450 MT, and 428 MT. These correspond to changes of, respectively, 47%, 51%, 41%, 42%, and 28%.

\*Associate Scientist, Department of Data Management, Digital Products, and Technology, AKADEMIYA2063


\*\* Associate Scientist, Department of Data Management, Digital Products, and Technology, AKADEMIYA2063

\*\*\*Senior Associate Scientist, Department of Data Management, Digital Products, and Technology, AKADEMIYA2063



## Annex – 2023 Eritrea Maize Production Forecast at District level

Regions	Sub-Regions	2023 Production (MT)	2022 Production (MT)	Difference (MT)	Change (%)
Anseba	Adi Teklezan	219	141	78	55%
Anseba	Asmat	259	224	36	16%
Anseba	Elabered	840	570	270	47%
Anseba	Gheleb	103	72	31	43%
Anseba	Hagaz	844	700	143	20%
Anseba	Halhal	562	387	175	45%
Anseba	Keren	222	153	69	45%
Anseba	Kerke Bet	80	273	-193	-71%
Debub	Adi Keyih	628	599	29	5%
Debub	Adi Kwala	936	698	238	34%
Debub	Areza	1026	700	326	47%
Debub	Dekemehare	1527	1077	450	42%
Debub	Dibarwa	1610	1096	513	47%
Debub	Kudo Bu`er	339	246	93	38%
Debub	May Mine	887	595	292	49%
Debub	Mendefera	1375	912	463	51%
Debub	Segeneyiti	1171	878	293	33%
Debub	Senafe	966	842	124	15%
Debub	Tsorena	1619	1464	154	11%
Gash Barka	Akordat	116	195	-79	-41%
Gash Barka	Barentu	74	73	1	2%
Gash Barka	Dghe	46	316	-270	-85%
Gash Barka	Forto	10	64	-54	-85%
Gash Barka	Gogne	596	559	37	7%
Gash Barka	Haykota	285	392	-106	-27%
Gash Barka	La`Elay Gash	697	625	72	12%
Gash Barka	Logo Anseba	1295	888	407	46%
Gash Barka	Mansura	1519	1394	125	9%
Gash Barka	Mogolo	111	180	-69	-38%
Gash Barka	Omhajer	1200	1177	23	2%
Gash Barka	Shemboko	1959	1530	428	28%
Gash Barka	Teseneye	187	371	-183	-50%
Maekel	Berikh	891	644	247	38%
Maekel	Ghala Nefhi	1251	862	389	45%



Maekel	Serejeka	1581	1121	460	41%
Semenawi Keyih Bahri	Afabet	1080	1273	-193	-15%
Semenawi Keyih Bahri	Foro	368	498	-130	-26%
Semenawi Keyih Bahri	Ghelaelo'	12	133	-121	-91%
Semenawi Keyih Bahri	Ghida`e	702	592	110	19%
Semenawi Keyih Bahri	Nakfa	129	155	-27	-17%
Semenawi Keyih Bahri	Sheib	406	411	-4	-1%
<b>Total</b>		<b>29728</b>	<b>25082</b>	<b>4646</b>	<b>19%</b>

**MT (Metric tons):** 1 MT is equivalent to 1,000 kilograms.

**Change:** refers to the relative difference and is calculated as (2023 prod – 2022 prod) divided by 2022 prod.

**Suggested Citation:** Ndoye, A., M. Dia, and K. Dia. 2023. AAgWa Crop Production Forecasts Brief Series: Eritrea – Maize. AAgWa Crop Production Forecasts Brief Series, No. 87. Kigali: AKADEMIYA2063. <https://doi.org/10.54067/acpf.87>