

AAGWa Crop Production Forecasts Brief Series Ethiopia – Barley

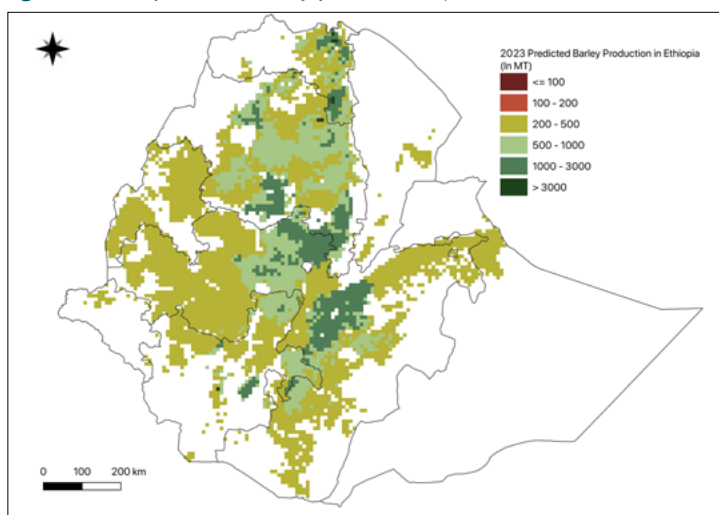
Aissatou Ndoye*, Mansour Dia**, and Khadim Dia***

No. 88, October 2023

The crop production forecast brief series by AKADEMIYA2063’s Africa Agriculture Watch (AAGWa) aims to provide more accurate and timely data on harvest and yields for nine major crops across nearly 50 African countries. The timeliness, wide availability, and easy access to this type of data will allow stakeholders across the value chain to better plan and execute policy and business actions more efficiently. The data published

in the briefs are generated through the Africa Crop Production (AfCP) model, an Artificial Intelligence (AI-based) model applied to remotely sensed geo-biophysical data to produce estimates at pixel as well as administrative levels as early as the beginning of every growing season. In Brief 88, we provide forecasts on Barley production in Ethiopia.

Figure 1. Ethiopia 2023 Barley production forecast.



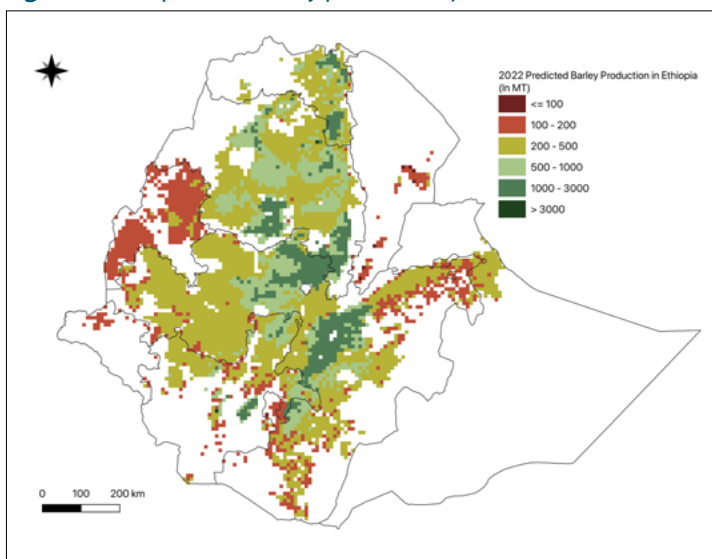
Data Source: Africa Agriculture Watch (www.aagwa.org).

In 2023, Barley production in Ethiopia is projected to reach 2,589,889 metric tons (MT), indicating a 9% increase over 2022 production levels. The most significant production levels are expected in areas such as Arsi (Oromia), North Shewa (Oromia), Mirab Shewa (Oromia), North Shewa (Amhara), Misraq Gojjam (Amhara), and Semen Gondar (Amhara), with production levels estimated at 280,541 MT, 175,490 MT, 136,621 MT, 112,556 MT, 110,944 MT, and 107,473 MT respectively. In comparison, lower

production volumes are observed in Afar Zone 5 (Afar), Majang (Gambela Peoples), Basketo (Southern Nations, Nationalities), Hareri (Harari People), Siti (Somali), and Alaba (Southern Nations, Nationalities), with production levels reaching only, 212 MT, 219 MT, 244 MT, 659 MT, 1,015 MT, and 1,116 MT, respectively.

Moreover, the most significant Barley production increases in 2023 are expected to occur in Arsi, Debubawi (Tigray), Misraqawi (Tigray), Metekel (Benshangul-Gumaz), Semen Gondar, and North Shewa with differences reaching, 23,220 MT, 17,594 MT, 12,387 MT, 11,010 MT, 9,854 MT, and 9,585 MT. These correspond to changes of, respectively, 9%, 22%, 25%, 27%, 10%, and 6%.

Figure 2. Ethiopia 2022 Barley production forecast.



Data Source: Africa Agriculture Watch (www.aagwa.org).

*Associate Scientist, Department of Data Management, Digital Products, and Technology, AKADEMIYA2063


** Associate Scientist, Department of Data Management, Digital Products, and Technology, AKADEMIYA2063

***Senior Associate Scientist, Department of Data Management, Digital Products, and Technology, AKADEMIYA2063



Annex – 2023 Ethiopia Barley Production Forecast at District level

Regions	Zones	2023 Production (MT)	2022 Production (MT)	Difference (MT)	Change (%)
Afar	Afar Zone 1	8936	5735	3201	56%
Afar	Afar Zone 3	5131	3312	1819	55%
Afar	Afar Zone 5	212	162	50	31%
Amhara	Agew Awi	30020	28735	1286	4%
Amhara	Argoba	1342	1057	285	27%
Amhara	Debub Gondar	92144	87388	4756	5%
Amhara	Debub Wollo	98131	90272	7859	9%
Amhara	Mirab Gojjam	68443	64335	4108	6%
Amhara	Misraq Gojjam	110944	106044	4900	5%
Amhara	North Shewa	112556	115435	-2879	-2%
Amhara	Oromia	1443	1640	-197	-12%
Amhara	Semen Gondar	107473	97619	9854	10%
Amhara	Semen Wello	94228	86561	7667	9%
Amhara	Wag Himra	44370	37130	7240	19%
Benshangul-Gumaz	Asosa	25864	17942	7922	44%
Benshangul-Gumaz	Kemashi	2887	2432	455	19%
Benshangul-Gumaz	Metekel	51664	40654	11010	27%
Dire Dawa	Dire Dawa	1263	1142	121	11%
Gambela Peoples	Agnuak	3859	2777	1082	39%
Gambela Peoples	Majang	219	186	32	17%
Gambela Peoples	Nuer	1906	1352	554	41%
Harari People	Hareri	659	517	143	28%
Oromia	Arsi	280541	257321	23220	9%
Oromia	Bale	69306	59773	9533	16%
Oromia	Borena	48170	41447	6723	16%
Oromia	Debub Mirab Shewa	37867	36905	962	3%
Oromia	Guji	63206	63238	-32	0%
Oromia	Horo Guduru	25933	23826	2107	9%
Oromia	Ilubabor	39019	34529	4490	13%
Oromia	Jimma	71037	65354	5683	9%
Oromia	Kelem Wellega	13377	11333	2045	18%
Oromia	Mirab Arsi	98645	98535	111	0%
Oromia	Mirab Hararghe	38718	29776	8942	30%
Oromia	Mirab Shewa	136621	134735	1885	1%
Oromia	Mirab Welega	31707	28530	3177	11%
Oromia	Misraq Harerge	38486	29446	9040	31%
Oromia	Misraq Shewa	33394	27477	5918	22%
Oromia	Misraq Wellega	44240	40761	3480	9%
Oromia	North Shewa	175490	165906	9585	6%
Somali	Fafan	21386	18967	2419	13%



Somali	Siti	1015	766	249	32%
Southern Nations, Nationalities	Alaba	1116	931	185	20%
Southern Nations, Nationalities	Amaro	3023	2469	555	22%
Southern Nations, Nationalities	Basketo	244	200	44	22%
Southern Nations, Nationalities	Bench Maji	10482	8898	1584	18%
Southern Nations, Nationalities	Dawro	8273	6862	1411	21%
Southern Nations, Nationalities	Dehub Omo	10488	9095	1393	15%
Southern Nations, Nationalities	Gamo Gofa	36806	39015	-2208	-6%
Southern Nations, Nationalities	Gedeo	10271	10570	-299	-3%
Southern Nations, Nationalities	Gurage	36957	38384	-1427	-4%
Southern Nations, Nationalities	Hadiya	11378	10281	1097	11%
Southern Nations, Nationalities	Keffa	32044	27749	4296	15%
Southern Nations, Nationalities	Kembata Tembaro	3897	3498	399	11%
Southern Nations, Nationalities	Konta	7527	6595	932	14%
Southern Nations, Nationalities	Sidama	35554	34129	1425	4%
Southern Nations, Nationalities	Silti	20443	18569	1873	10%
Southern Nations, Nationalities	Wolayita	10501	8787	1713	19%
Southern Nations, Nationalities	Yem	2765	2810	-44	-2%
Tigray	Dehubawi	99099	81505	17594	22%
Tigray	Mehakelegnaw	49048	41193	7854	19%
Tigray	Mi'irabawi	4628	4354	274	6%
Tigray	Misraqawi	61692	49304	12387	25%
Tigray	Semien Mi'irabaw	1800	1635	165	10%
Total		2589889	2367884	222004	9%

MT (Metric tons): 1 MT is equivalent to 1,000 kilograms.

Change: refers to the relative difference and is calculated as (2023 prod – 2022 prod) divided by 2022 prod.

Suggested Citation: Ndoye, A., M. Dia, and K. Dia. 2023. AAgWa Crop Production Forecasts Brief Series: Ethiopia – Barley. AAgWa Crop Production Forecasts Brief Series, No. 88. Kigali: AKADEMIYA2063. <https://doi.org/10.54067/acpf.88>