

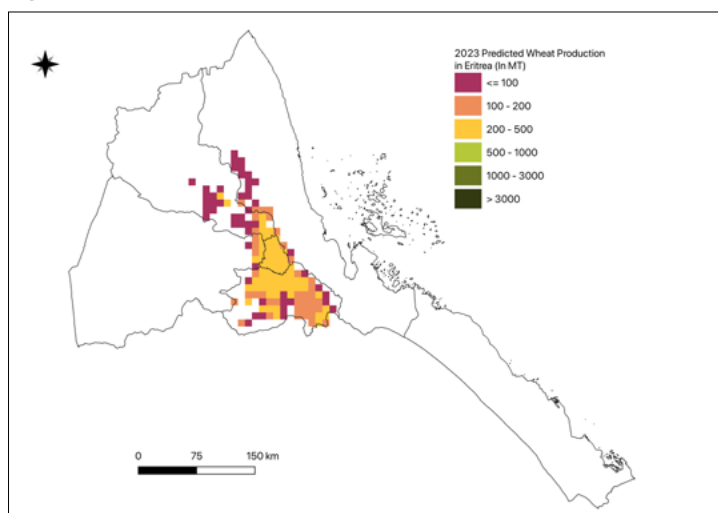
# AAGWa Crop Production Forecasts Brief Series Eritrea – Wheat

Aissatou Ndoye\*, Mansour Dia\*\*, and Khadim Dia\*\*\*

No. 89, October 2023

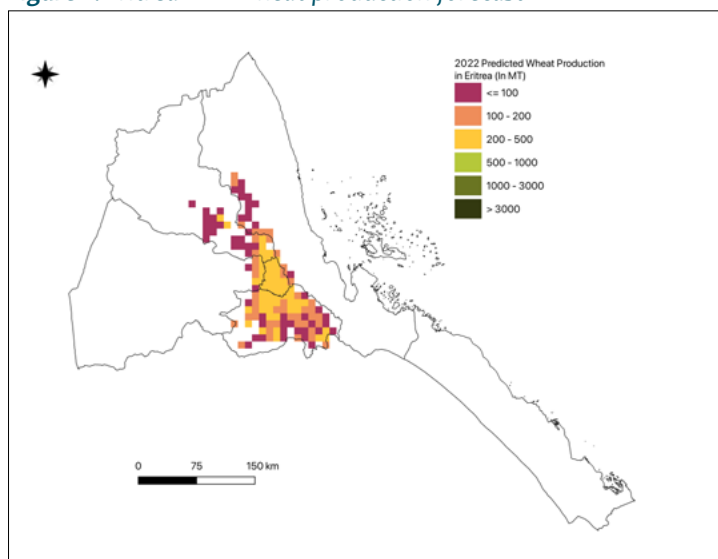
The crop production forecast brief series by AKADEMIYA2063's Africa Agriculture Watch (AAGWa) aims to provide more accurate and timely data on harvest and yields for nine major crops across nearly 50 African countries. The timeliness, wide availability, and easy access to this type of data will allow stakeholders across the value chain to better plan and execute policy and business actions more efficiently. The data published in the briefs are generated through the Africa Crop Production (AfCP) model, an Artificial Intelligence

Figure 1. Eritrea 2023 wheat production forecast.



Data Source: Africa Agriculture Watch ([www.aagwa.org](http://www.aagwa.org)).

Figure 2. Eritrea 2022 wheat production forecast.



Data Source: Africa Agriculture Watch ([www.aagwa.org](http://www.aagwa.org)).

(AI-based) model applied to remotely sensed geo-biophysical data to produce estimates at pixel as well as administrative levels as early as the beginning of every growing season. In Brief 89, we provide forecasts on wheat production in Eritrea.

In 2023, wheat production in Eritrea is expected to reach 28,320 metric tons (MT), which corresponds to a 15% increase over 2022 production levels. The highest wheat production levels are expected in the northern part of the country such as, Dibarwa (Debub), Dekemehare (Debub), Serejeka (Maekel), Mendefera (Debub), and Segeneyiti (Debub) with production estimates reaching respectively, 2,591 MT, 2,284 MT, 2,187 MT, 2,181 MT, and 1,762 MT.

In contrast, the production is projected to be lowest in areas including Mansura (Gash Barka), Shemboko (Gash Barka), Keren (Anseba), Hagaz (Anseba), May Mine (Debub), and Asmat (Anseba) with levels of respectively, 14 MT, 108 MT, 117 MT, 209 MT, 231 MT, and 233 MT.

Compared to 2022, the most significant wheat production increases are expected to occur in areas such as Senafe (Debub), Mendefera, Dekemehare, Dibarwa, and Segeneyiti with differences of respectively, 423 MT, 348 MT, 336 MT, 306 MT, and 298 MT. These represent changes of respectively, 40%, 19%, 17%, 13%, and 20%.

\*Associate Scientist, Department of Data Management, Digital Products, and Technology, AKADEMIYA2063

\*\* Associate Scientist, Department of Data Management, Digital Products, and Technology, AKADEMIYA2063

\*\*\*Senior Associate Scientist, Department of Data Management, Digital Products, and Technology, AKADEMIYA2063



## Annex – 2023 Eritrea Wheat Production Forecast at District level

Regions	Sub-Regions	2023 Production (MT)	2022 Production (MT)	Difference (MT)	Change (%)
Anseba	Adi Teklezan	1123	1028	95	9%
Anseba	Asmat	233	196	37	19%
Anseba	Elabered	854	733	121	16%
Anseba	Gheleb	531	530	1	0%
Anseba	Hagaz	209	156	53	34%
Anseba	Halhal	929	875	54	6%
Anseba	Keren	117	101	16	16%
Debub	Adi Keyih	1194	961	233	24%
Debub	Adi Kwala	1186	990	196	20%
Debub	Areza	1141	1003	137	14%
Debub	Dekemehare	2284	1948	336	17%
Debub	Dibarwa	2591	2286	306	13%
Debub	Kudo Bu`er	415	353	62	18%
Debub	May Mine	231	253	-22	-9%
Debub	Mendefera	2181	1833	348	19%
Debub	Segeneyiti	1762	1463	298	20%
Debub	Senafe	1491	1069	423	40%
Debub	Tsorena	1116	819	297	36%
Gash Barka	Logo Anseba	1634	1388	245	18%
Gash Barka	Mansura	14	0	14	inf
Gash Barka	Shemboko	108	118	-10	-8%
Maekel	Berikh	1148	1039	109	11%
Maekel	Ghala Nefhi	1707	1515	191	13%
Maekel	Serejeka	2187	2003	183	9%
Semenawi Keyih Bahri	Afabet	547	573	-25	-4%
Semenawi Keyih Bahri	Ghida`e	418	329	90	27%
Semenawi Keyih Bahri	Nakfa	351	466	-115	-25%
Semenawi Keyih Bahri	Sheib	617	588	29	5%
<b>Total</b>		<b>28320</b>	<b>24618</b>	<b>3702</b>	<b>15%</b>

**MT (Metric tons):** 1 MT is equivalent to 1,000 kilograms.

**Change:** refers to the relative difference and is calculated as (2023 prod – 2022 prod) divided by 2022 prod.

**Suggested Citation:** Ndoye, A., M. Dia, and K. Dia. 2023. AAgWa Crop Production Forecasts Brief Series: Eritrea – Wheat. AAgWa Crop Production Forecasts Brief Series, No. 89. Kigali: AKADEMIYA2063. <https://doi.org/10.54067/acpf.89>