

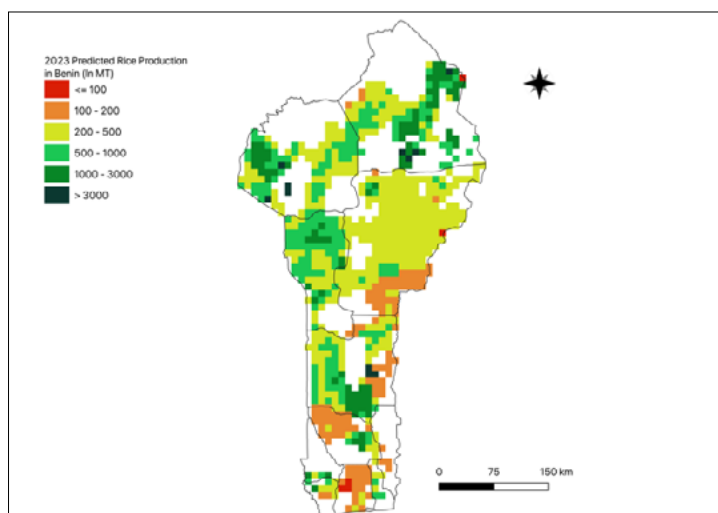
# AAGWa Crop Production Forecasts Brief Series Benin – Rice

Aissatou Ndoye\*, Mansour Dia\*\*, and Khadim Dia\*\*\*

No. 90, October 2023

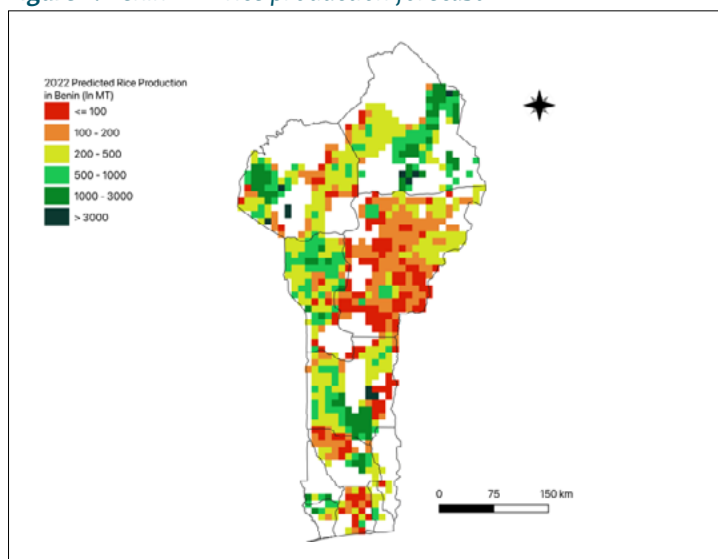
The crop production forecast brief series by AKADEMIYA2063's Africa Agriculture Watch (AAGWa) aims to provide more accurate and timely data on harvest and yields for nine major crops across nearly 50 African countries. The timeliness, wide availability, and easy access to this type of data will allow stakeholders across the value chain to better plan and execute policy and business actions more efficiently. The data published in the briefs are generated through the Africa Crop Production (AfCP) model, an Artificial Intelligence

**Figure 1.** Benin 2023 rice production forecast.



Data Source: Africa Agriculture Watch ([www.aagwa.org](http://www.aagwa.org)).

**Figure 2.** Benin 2022 rice production forecast.



Data Source: Africa Agriculture Watch ([www.aagwa.org](http://www.aagwa.org)).

(AI-based) model applied to remotely sensed geo-biophysical data to produce estimates at pixel as well as administrative levels as early as the beginning of every growing season. In Brief 90, we provide forecasts on rice production in Benin.

In 2023, rice production in Benin is projected to reach 531,716 metric tons (MT), which corresponds to a 16% increase over 2022 production levels. The departments of Malanville (Alibori), Savè (Collines), Djougou Rural (Donga), Kandi (Alibori), and Natitingou (Atakora) are expected to produce the most significant volumes of rice, with production levels estimated at 48,712 MT, 46,003 MT, 29,257 MT, 27,219 MT, and 25,281 MT respectively. In comparison, lower production values are observed in areas such as Ouidah (Atlantique), Tori-Bossito (Atlantique), Glazoué (Collines), Toffo (Atlantique), Allada (Atlantique), and Akpro-Missérété (Ouémé) with production of, respectively, 106 MT, 107 MT, 351 MT, 465 MT, 505 MT, and 530 MT.

Compared to 2022, the most significant rice production increases in 2023 are expected to occur in Bassila (Donga), Kouandé (Atakora), Djougou Rural (Donga), Tchaourou (Borgou), and Kérou (Atakora) with differences of respectively, 7,307 MT, 6,832 MT, 6,461 MT, 6,110 MT, and 5,188 MT, respectively. These correspond to changes of, respectively, 46%, 75%, 28%, 89%, and 54%.

\*Associate Scientist, Department of Data Management, Digital Products, and Technology, AKADEMIYA2063


\*\* Associate Scientist, Department of Data Management, Digital Products, and Technology, AKADEMIYA2063

\*\*\*Senior Associate Scientist, Department of Data Management, Digital Products, and Technology, AKADEMIYA2063



## Annex – 2023 Benin Rice Production Forecast at District level

Departments	Communes	2023 Production (MT)	2022 Production (MT)	Difference (MT)	Change (%)
Alibori	Banikoara	19185	14482	4703	32%
Alibori	Gogounou	24704	23673	1031	4%
Alibori	Kandi	27219	25001	2218	9%
Alibori	Karimama	1195	896	299	33%
Alibori	Malanville	48712	46406	2306	5%
Alibori	Ségbana	10582	10066	516	5%
Atakora	Boukoubé	21009	20942	67	0%
Atakora	Cobly	4232	2403	1829	76%
Atakora	Kérou	14741	9553	5188	54%
Atakora	Kouandé	15948	9116	6832	75%
Atakora	Matéri	24133	21835	2298	11%
Atakora	Natitingou	25281	26020	-739	-3%
Atakora	Péhunco	648	247	401	163%
Atakora	Tanguiéta	18881	16258	2623	16%
Atakora	Toucountouna	992	818	173	21%
Atlantique	Abomey-Calavi	1201	1303	-101	-8%
Atlantique	Allada	505	859	-354	-41%
Atlantique	Ouidah	106	200	-94	-47%
Atlantique	Toffo	465	507	-41	-8%
Atlantique	Tori-Bossito	107	17	90	536%
Atlantique	Zè	1292	818	474	58%
Borgou	Bembèrèkè	10354	5925	4430	75%
Borgou	Kalalé	7910	5731	2180	38%
Borgou	N'Dali	8626	4200	4426	105%
Borgou	Nikki	9016	8257	759	9%
Borgou	Parakou	4583	4006	577	14%
Borgou	Pèrèrè	5667	3253	2414	74%
Borgou	Sinendé	5641	3895	1746	45%
Borgou	Tchaourou	13006	6896	6110	89%
Collines	Bantè	11673	9874	1799	18%
Collines	Dassa-Zoumè	23727	23057	670	3%
Collines	Glazoué	351	352	-1	0%
Collines	Ouèssè	10779	8786	1992	23%
Collines	Savalou	16859	15714	1145	7%
Collines	Savè	46003	47454	-1451	-3%
Donga	Bassila	23291	15984	7307	46%
Donga	Copargo	6132	4662	1470	32%
Donga	Djougou Rural	29257	22796	6461	28%
Donga	Djougou Urbain	3604	3358	246	7%
Donga	Ouaké	4584	3607	977	27%
Kouffo	Djakotomey	2398	2532	-134	-5%
Kouffo	Dogbo	3327	3542	-215	-6%
Mono	Bopa	1795	2094	-299	-14%
Mono	Houéyogbé	745	935	-190	-20%
Mono	Lokossa	2397	2773	-376	-14%



Ouémé	Adjohoun	1773	1657	116	7%
Ouémé	Akpro-Missérété	530	417	113	27%
Ouémé	Dangbo	543	510	32	6%
Plateau	Adja-Ouèrè	708	997	-289	-29%
Plateau	Kétou	946	1036	-90	-9%
Zou	Bohicon	708	619	90	15%
Zou	Covè	4665	5069	-404	-8%
Zou	Djidja	3954	3520	434	12%
Zou	Ouinhi	931	892	39	4%
Zou	Za-Kpota	2115	1965	151	8%
Zou	Zagnanado	1981	2018	-37	-2%
<b>Total</b>		<b>531716</b>	<b>459802</b>	<b>71914</b>	<b>16%</b>

**MT (Metric tons):** 1 MT is equivalent to 1,000 kilograms.

**Change:** refers to the relative difference and is calculated as (2023 prod – 2022 prod) divided by 2022 prod.

**Suggested Citation:** Ndoye, A., M. Dia, and K. Dia. 2023. AAgWa Crop Production Forecasts Brief Series: Benin – Rice. AAgWa Crop Production Forecasts Brief Series, No. 90. Kigali: AKADEMIYA2063. <https://doi.org/10.54067/acpf.90>