

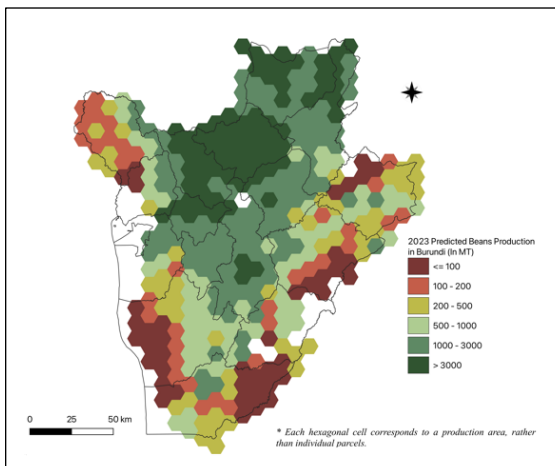
AAGWa Crop Production Forecasts Brief Series Burundi – Beans

Aïssatou Ndoye,* Mansour Dia,** and Khadim Dia***

No. 93, November 2023

The crop production forecast brief series by AKADEMIYA2063's Africa Agriculture Watch (AAGWa) aims to provide more accurate and timely data on harvest and yields for nine major crops across nearly 50 African countries. The timeliness, wide availability, and easy access to this type of data will allow

Figure 1. Burundi 2023 Beans production forecast.



Data source: Africa Agriculture Watch (www.aagwa.org).

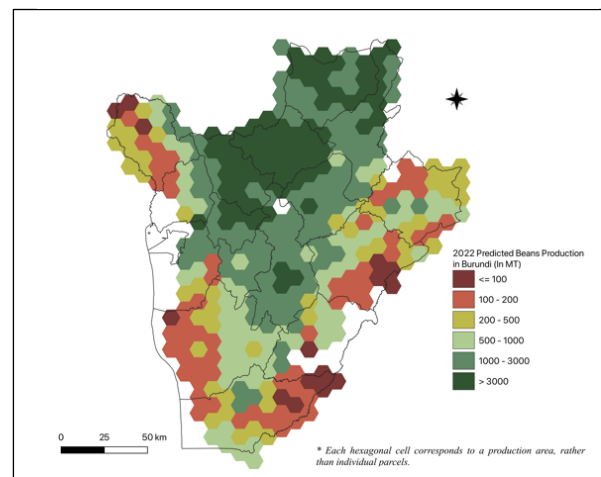
However, the most significant beans production levels are expected in the Northern communes, particularly in Butihinda (Muyinga), Busoni (Kirundo), Kiremba (Ngozi), Muramvya, and Bugabira (Kirundo), with production volumes estimated at 14,031 MT, 13,759 MT, 12,763 MT, 11,046 MT, and 10,322 MT, respectively. In comparison, lower production values are observed in Kinyinya (Ruyigi), Bubanza, Kibago (Makamba), and Nyabitsinda (Ruyigi), with production of, 75 MT, 75 MT, 76 MT, and 108 MT, respectively.

Moreover, the most significant beans production increases in 2023 are expected to occur in Mugamba (Bururi), Kabarore (Kayanza), Musigati (Bubanza), Muruta (Kayanza), and Kiremba, with differences of, 683 MT, 596 MT, 525 MT, 482 MT, and 433 MT, respectively. These correspond to changes of, respectively, 59%, 8%, 12%, 11%, and 4%.

stakeholders across the value chain to better plan and execute policy and business actions more efficiently. The data published in the briefs are generated through the Africa Crop Production (AfCP) model, an Artificial Intelligence (AI-based) model applied to remotely sensed geo-biophysical data to produce estimates at pixel as well as administrative levels as early as the beginning of every growing season. In Brief 93, we provide forecasts on Beans production in Burundi.

In 2023, beans production in Burundi is projected to reach 379,087 metrics tons (MT), which corresponds to a 2% increase over 2022 production levels.

Figure 2. Burundi 2022 Beans production forecast.



Data source: Africa Agriculture Watch (www.aagwa.org).

*Associate Scientist, Department of Data Management, Digital Products, and Technology, AKADEMIYA2063

**Associate Scientist, Department of Data Management, Digital Products, and Technology, AKADEMIYA2063

***Senior Associate Scientist, Department of Data Management, Digital Products, and Technology, AKADEMIYA2063

Annex – 2023 Burundi Beans Production Forecast at District level

Provinces	Communes	2023 Production (MT)	2022 Production (MT)	Difference (MT)	Change (%)
Bubanza	Bubanza	75	111	-36	-32%
Bubanza	Musigati	4769	4245	525	12%
Bubanza	Rugazi	2607	2483	125	5%
Bujumbura Rural	Bugarama	139	95	45	47%
Bujumbura Rural	Mukike	467	399	68	17%
Bujumbura Rural	Mutambu	960	970	-10	-1%
Bujumbura Rural	Nyabiraba	1183	1048	136	13%
Bururi	Burambi	491	604	-112	-19%
Bururi	Bururi	1953	2142	-189	-9%
Bururi	Buyengero	564	570	-5	-1%
Bururi	Matana	618	643	-25	-4%
Bururi	Mugamba	1833	1150	683	59%
Bururi	Rumonge	236	486	-250	-51%
Bururi	Rutovu	825	903	-78	-9%
Bururi	Songa	1354	1537	-183	-12%
Bururi	Vyanda	1433	1474	-41	-3%
Cankuzo	Cankuzo	3046	3234	-188	-6%
Cankuzo	Cendajuru	637	593	45	8%
Cankuzo	Gisagara	3219	3338	-120	-4%
Cankuzo	Kigamba	260	372	-112	-30%
Cankuzo	Mishiha	1221	1246	-24	-2%
Cibitoke	Buganda	305	370	-65	-18%
Cibitoke	Bukinanyana	3326	2931	395	13%
Cibitoke	Mabayi	2749	2529	220	9%
Cibitoke	Mugina	363	338	25	7%
Cibitoke	Murwi	191	193	-1	-1%
Cibitoke	Rugombo	347	529	-183	-35%
Gitega	Bugendana	2009	1973	37	2%
Gitega	Bukirasazi	2622	2717	-95	-3%
Gitega	Buraza	1997	2128	-132	-6%
Gitega	Giheta	4124	4134	-10	0%
Gitega	Gishubi	5491	5465	26	0%
Gitega	Gitega	6014	6195	-182	-3%
Gitega	Itaba	3792	3930	-139	-4%
Gitega	Makebukuro	7274	7090	185	3%
Gitega	Nyanrusange	5176	5127	49	1%
Gitega	Ryansoro	7195	7057	138	2%
Karuzi	Bugenyuzi	7620	7533	88	1%
Karuzi	Buhiga	4845	4883	-39	-1%
Karuzi	Gihogazi	3186	3168	17	1%
Karuzi	Gitaramuka	4236	4323	-88	-2%
Karuzi	Mutumba	2719	2798	-79	-3%
Karuzi	Nyabikere	3868	3812	56	1%
Karuzi	Shombo	5355	5141	214	4%
Kayanza	Butaganzwa1	4348	4283	66	2%
Kayanza	Gahombo	4166	3903	263	7%
Kayanza	Gatara	4393	4268	125	3%
Kayanza	Kabarore	8018	7422	596	8%
Kayanza	Kayanza	4105	3923	183	5%

Kayanza	Matongo	8221	7826	396	5%
Kayanza	Muhanga	2435	2423	11	0%
Kayanza	Muruta	5075	4592	482	11%
Kayanza	Rango	7953	7753	200	3%
Kirundo	Bugabira	10322	10131	191	2%
Kirundo	Busoni	13759	13496	263	2%
Kirundo	Bwambarangwe	8527	8273	254	3%
Kirundo	Gitobe	5984	5979	5	0%
Kirundo	Kirundo	7298	7264	33	0%
Kirundo	Ntega	6650	6689	-39	-1%
Kirundo	Vumbi	8744	8497	247	3%
Makamba	Kayogoro	334	383	-48	-13%
Makamba	Kibago	76	128	-52	-40%
Makamba	Mabanda	408	484	-76	-16%
Makamba	Makamba	3261	3147	114	4%
Makamba	Nyanza-Lac	1525	1994	-469	-24%
Makamba	Vugizo	2778	2972	-194	-7%
Muramvya	Bukeye	3533	3330	203	6%
Muramvya	Mbuye	3483	3354	129	4%
Muramvya	Muramvya	11046	10768	278	3%
Muramvya	Rutegama	5185	5086	98	2%
Muyinga	Buhinyuza	3048	3304	-255	-8%
Muyinga	Butihinda	14031	14406	-374	-3%
Muyinga	Gasorwe	5052	5053	-1	0%
Muyinga	Giteranyi	8440	8325	114	1%
Muyinga	Muyinga	5166	5276	-110	-2%
Muyinga	Mwakiro	1037	1106	-70	-6%
Mwaro	Bisoro	1924	1920	4	0%
Mwaro	Gisozi	1916	1950	-34	-2%
Mwaro	Kayokwe	3000	3073	-73	-2%
Mwaro	Ndava	1839	1767	72	4%
Mwaro	Nyabihanga	1083	1179	-96	-8%
Mwaro	Rusaka	1263	1232	32	3%
Ngozi	Busiga	3799	3590	210	6%
Ngozi	Gashikanwa	4464	4393	70	2%
Ngozi	Kirembe	12763	12330	433	4%
Ngozi	Marangara	5839	5659	180	3%
Ngozi	Mwumba	9277	8938	339	4%
Ngozi	Ngozi	4027	3871	156	4%
Ngozi	Nyamurenza	9540	9128	412	5%
Ngozi	Ruhororo	8859	8481	378	4%
Ngozi	Tangara	3805	3766	39	1%
Rutana	Bukemba	414	0	414	inf
Rutana	Gitanga	1314	1393	-79	-6%
Rutana	Mpinga-Kayove	1562	1678	-116	-7%
Rutana	Musongati	194	243	-50	-20%
Rutana	Rutana	1121	1166	-46	-4%
Ruyigi	Butaganzwa2	2656	2801	-145	-5%
Ruyigi	Butezi	1159	1191	-32	-3%
Ruyigi	Bweru	962	962	0	0%
Ruyigi	Gisuru	1959	1638	320	20%
Ruyigi	Kinyinya	75	122	-48	-39%



Ruyigi	Nyabitsinda	108	151	-43	-29%
Ruyigi	Ruyigi	3069	2967	102	3%
Total		379087	373437	5650	2%

MT (Metric tons): 1 MT is equivalent to 1,000 kilograms.

Change: refers to the relative difference and is calculated as (2023 prod – 2022 prod) divided by 2022 prod.

Suggested Citation: Ndoye, A., M. Dia, and K. Dia. 2023. AAgWa Crop Production Forecasts Brief Series: Burundi – Beans. AAgWa Crop Production Forecasts Brief Series, No. 93. Kigali: AKADEMIYA2063.
<https://doi.org/10.54067/acpf.93>