

# AAGWa Crop Production Forecasts Brief Series

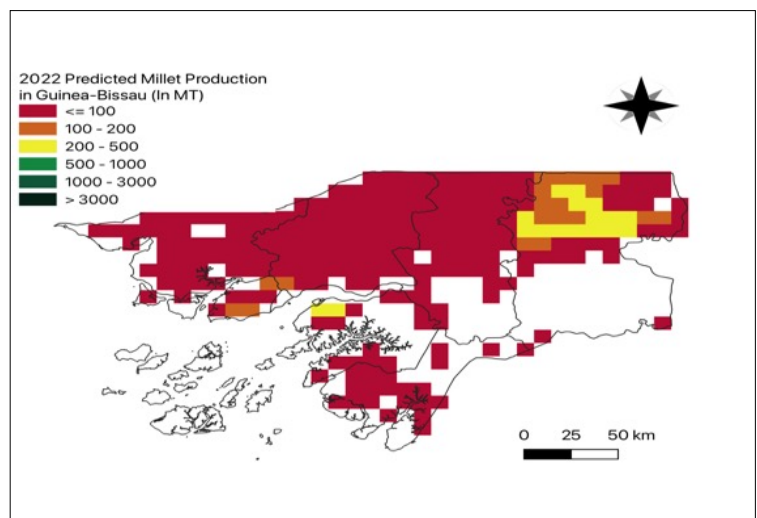
## Guinea-Bissau – Millet

Aissatou Ndoye\*, Khadim Dia\*\*, and Racine Ly\*\*\*

No. 09, February 2023

The crop production forecast brief series by AKADEMIYA2063's Africa Agriculture Watch (AAGWa) aims to provide more accurate and timely data on harvest and yields for nine major crops across nearly 50 African countries. The timeliness, wide availability, and easy access to this type of data will allow stakeholders across the value chain to better plan and execute policy and business actions more efficiently. The data published in the briefs are generated through the Africa Crop Production (AfCP) model, an Artificial Intelligence (AI-based) model applied to remotely sensed geobiophysical data to produce estimates at pixel as well as administrative levels as early as the beginning of every growing season. In Brief 9, we provide forecasts on Millet production in Guinea-Bissau.

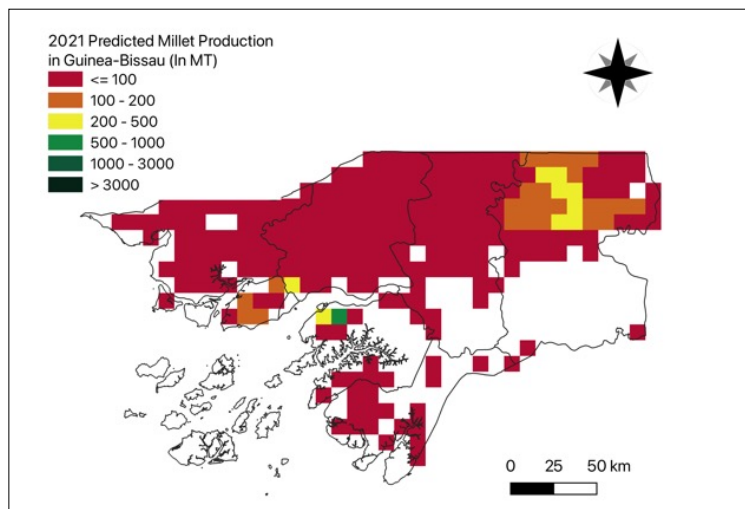
Figure 1. Guinea-Bissau 2022 millet production forecast.



Data Source: Africa Agriculture Watch ([www.aagwa.org](http://www.aagwa.org)).

In 2022, millet production in Guinea-Bissau was projected to reach 16,710 metric tons (MT), equivalent to an overall increase of 1,538 MT over 2021 production levels. Indeed, the largest millet producers are expected to be in Gabú districts, especially in Piche, Pirada, Gabu, and Sonaco, with production values estimated at 2,667 MT, 2,007 MT, 1,700 MT, and 1,349 MT. On the other hand, lower production levels are observed in districts such as Xitole (Bafatá), Buba (Quinara), Boe (Gabu), and Quebo, with 65, 85, 106, and 114 metric tons, respectively.

Figure 2. Guinea-Bissau 2021 millet production forecast.



Data Source: Africa Agriculture Watch ([www.aagwa.org](http://www.aagwa.org)).

However, the highest millet production levels increase exceeding 250 MT are expected in Piche (Gabú), Pirada (Gabú), Gabu (Gabú), and Contuboe (Bafatá), with differences of 481, 433, 322, and 294 metric tons, respectively.

\*Associate Scientist, Department of Data Management, Digital Products, and Technology, AKADEMIYA2063

\*\* Senior Associate Scientist, Department of Data Management, Digital Products, and Technology, AKADEMIYA2063

\*\*\*Director, Department of Data Management, Digital Products, and Technology, AKADEMIYA2063



## Annex – 2022 Guinea Millet Production Forecast at District level

Regions	Districts	2022 Prod (MT)	2021 Prod (MT)	Absolute Difference (MT)	Relative Difference (%)
Bafatá	Bafata	293	144	149	103%
Bafatá	Bambadinca	185	178	7	4%
Bafatá	Contuboel	619	325	294	91%
Bafatá	Galomaro	221	139	82	59%
Bafatá	Gamamundo	384	271	113	42%
Bafatá	Xitole	65	87	-22	-25%
Biombo	Prabis	123	137	-14	-10%
Biombo	Quinhamel	313	371	-57	-15%
Biombo	Safim	162	207	-44	-21%
Cacheu	Bigene	525	463	62	13%
Cacheu	Bula	385	404	-19	-5%
Cacheu	Cacheu	298	325	-27	-8%
Cacheu	Caio	116	85	31	36%
Cacheu	Canghungo	258	356	-98	-27%
Cacheu	Sao Domingos	376	373	3	1%
Gabú	Boe	106	89	18	20%
Gabú	Gabu	1700	1379	322	23%
Gabú	Piche	2667	2185	481	22%
Gabú	Pirada	2007	1574	433	28%
Gabú	Sonaco	1349	1107	242	22%
Oio	Bissora	496	476	20	4%
Oio	Farim	746	570	175	31%
Oio	Mansaba	595	520	75	14%
Oio	Mansoa	483	534	-51	-10%
Oio	Nhacra	516	569	-53	-9%
Quinara	Buba	85	76	8	11%
Quinara	Empada	137	253	-116	-46%
Quinara	Fulacunda	119	144	-25	-17%
Quinara	Tite	711	792	-82	-10%
Tombali	Bedanda	200	260	-60	-23%
Tombali	Cacine	153	155	-3	-2%
Tombali	Catio	201	467	-266	-57%
Tombali	Quebo	114	157	-43	-27%
<b>Total</b>		<b>16710</b>	<b>15172</b>	<b>1538</b>	<b>10%</b>

**Notes:** MT (Metric ton): 1 MT is equivalent to 1,000 kilograms

Absolute Difference: 2022 Prod – 2021 Prod

Relative Difference: (2022 – 2021) / 2021

**Suggested Citation:** Ndoye, A., K. Dia, and R. Ly. 2023. AAgWa Crop Production Forecasts Brief Series: Guinea-Bissau – Millet. AAgWa Crop Production Forecasts Brief Series, No.9. Kigali, Rwanda: AKADEMIYA2063. <https://doi.org/10.54067/acpf.09>